



## GRAND CENTRAL TO SOAR AGAIN

### City Approves Disney's Plans to Revitalize Historic Air Terminal

On March 25, 2013, the City's Historic Preservation Commission (HPC) approved the rehabilitation plans for the Grand Central Air Terminal, arguably the most significant historic structure in Glendale.

Dedicated in 1929, Grand Central is an exceptional and rare example of an early airport terminal building featuring Spanish Colonial Revival architecture with Art Deco and Zigzag Moderne influences. It is also an outstanding example of the work of prominent Los Angeles architect Henry L. Gogerty.

Located at 1310 Air Way, the Glendale landmark played a pivotal role in the development of aviation in the United States and became the premier spot for air travel in Southern California. Charles Lindbergh piloted the first regularly scheduled coast-to-coast flight from Grand Central. Amelia Earhart also used the airport and purchased her first plane there. During the airport's heyday, many notable Hollywood stars flew in and out of Glendale's air terminal, including Clark Gable, Carole Lombard, Lucille Ball, Mary Astor and Jack Warner. Grand Central was also the setting for several films, including *Bright Eyes* (1934) starring Shirley Temple.

The airport permanently closed in 1959 and was redeveloped as the Grand Central Business Center. The Walt Disney Company purchased the air terminal in 1997, and as part of a development agreement with the City of Glendale, agreed to rehabilitate the building according to United States Department of Interior standards by the end of 2015 and place it on the National Register of Historic Places.

Over the years, The Glendale Historical Society has voiced its



Photo: Philip Dockter

concerns about the condition and maintenance of the building and remained in close communication with both the City and Disney on the status of the restoration.

Disney worked with architects Frederick Fisher and Partners and landscape architects Pamela Burton + Company on the design plans. Historic Resources Group served as the historic preservation consultant. At the HPC meeting, TGHS expressed its enthusiastic support of the design, which includes restoring important character defining features, such as the tower, arcades, and fenestration, while adapting the space in a manner that is both sensitive to the historic building and practical for contemporary office use.

In addition to a complete restoration of the building's exterior, the plans include several structural stabilization and system upgrades; rehabilitation of the interior to include the original configuration of the passenger "Waiting Room"; restoration and recreation of the original color palette and key architectural details; demolition of an adjacent industrial (non-historic)

**GRAND CENTRAL** continued on page 3



# PRESIDENT'S MESSAGE



Photo: Simon Wright

On April 30, Mayor Dave Weaver officially proclaimed the month of May 2013 as "Historic Preservation Month" in Glendale. We welcome the city's commitment to safeguarding and showcasing our historic properties and seeing historic preservation as a tool to enhance and revitalize our community's character.

TGHS will continue to press our local leaders to make sure that Glendale lives up to these ideals and that preservation is thoughtfully integrated into our city's growth strategy, especially as the economy improves and new development projects are proposed. We are committed to an ongoing dialogue with city officials and developers to advocate for the preservation of our built environment and the rehabilitation and adaptive reuse of historic structures. It just makes sense to preserve an established building and put it to a new use rather than demolish it. Once it's gone, it's gone forever. (I know, I know, I'm preaching to likeminded folks!)

But preservation is not just about saving old buildings – it's also about shaping our future and making use of our rich architectural heritage for a better Glendale, to grow our economy, protect our environment, maintain our property values, provide affordable housing, and create a sense of community identity and pride.

What can you do to celebrate Historic Preservation Month?

- When you speak to members of the City Council, tell them that you cherish Glendale's architectural legacy, and you encourage them to make preservation a priority. Just point to Pasadena.
- Talk to your neighbors about forming a historic district to preserve the architectural integrity and charm of your neighborhood. Attend our "How to Create a Historic District" presentation on May 20 (see page 8, the Events Calendar, for details).
- Sign up to help out at our Home Tour. Contact Marcia Hanford, Events Coordinator, at [events@glendalehistorical.org](mailto:events@glendalehistorical.org) or 818-242-7447.
- Volunteer as a docent or greeter at the Doctors House Museum. If you haven't visited in awhile, stop by on a Sunday to see our latest exhibit on vintage wedding dresses.
- Buy a gift membership to TGHS for a friend or family member. Not only will they enjoy all the benefits that come with being a member, they will be a part of our efforts to be a strong voice for historic preservation.
- Make a donation to the Glendale Historical Society Endowment Fund at the Community Foundation of the Verdugos to provide permanent support for our activities. Contact our Treasurer, Sean Bersell, at [sean.bersell@glendalehistorical.org](mailto:sean.bersell@glendalehistorical.org) or 818-242-7447 for more information.

See our list of upcoming events on page 8 and mark your calendar. A great way to support preservation is by seeing and celebrating our historic treasures.

Regards,

*Greg Grammer*

## Brockmont Park Historic District Application Moving Forward

The draft historic resources survey for the Brockmont Historic District has been completed and sent to all homeowners within the proposed district.

Comprised of a variety of architectural styles, including period revival, eclectic, minimal traditional and ranch, the proposed district's period of significance is 1910-1955. The survey concluded that the area is eligible for designation as a historic district and determined that 86% of the homes are considered to be "contributors" to the district, well above the 60% minimum requirement. The area is part of the 1926 "Brockmont Park" subdivision of the former estate of John Brockman, whose 1910 home is within the boundaries of the proposed district.

Consisting of 59 single-family homes, the proposed Brockmont Historic District is located in northwest Glendale at the base of the Verdugo Mountains and bordered by Merriman Drive to the west, Cumberland Road to the north, Valley View Road to the east, and Kenneth Road to the south. It meets four of the nine designation criteria established by City ordinance, which requires that only one criterion be met.

The survey will be presented to the city's Historic Preservation Commission for final review and approval on May 29. If approved, proponents will be authorized to collect signatures requesting a zone change to establish the historic district, which requires just over 50% support of the homeowners.

If you live within the proposed historic district, TGHS encourages you to sign the petition and persuade your neighbors to do the same.

THE  
**GLENDALE**  
HISTORICAL SOCIETY

**Board of Directors**

**PRESIDENT**

Greg Grammer  
greg.grammer@glendalehistorical.org

**SECRETARY**

Brian Haworth  
bhaworth@glendalehistorical.org

**TREASURER**

Sean Bersell  
sean.bersell@glendalehistorical.org

**DIRECTORS AT LARGE**

Jamie Anderson  
jamieanderson@glendalehistorical.org

Margaret Hammond

Marcia Hanford  
marcia.hanford@glendalehistorical.org

Ammar Kharouf  
ammam.kharouf@glendalehistorical.org

Vrej Mardian  
VrejMardian@glendalehistorical.org

**DOCTORS HOUSE DIRECTOR**

Sonia Montejano  
sonia.montejano@glendalehistorical.org

**DOCTORS HOUSE ASSISTANT DIRECTOR**

Peter Rusch  
peterrusch@yahoo.com

**GRAPHIC DESIGN**

Scott Lasken  
scott@stratagemdesigninc.com

**NEWSLETTER LAYOUT**

Carole Dougherty  
czdougherty@sbcglobal.net

**Patron Members**

**JEWEL CITY PATRONS**

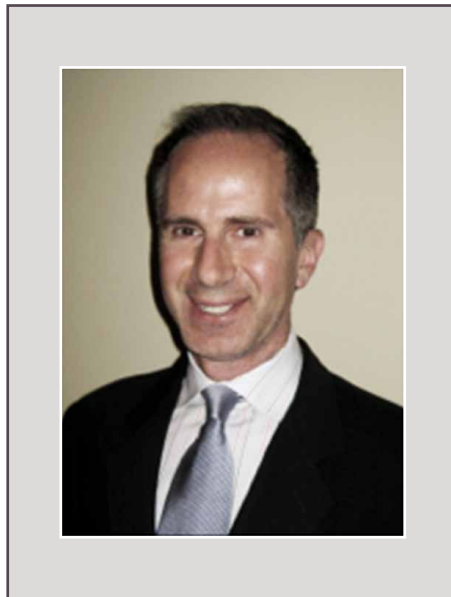
Rima & Donnell Cameron  
Guy DeConte & Ammar Kharouf  
Joseph M. Gossett  
Greg Grammer & Simon Wright  
Heather Norris & Sean Bersell  
Annie & Dennis Reed  
Karl Swaidan  
Barry Switzer  
Jackie & Halsey Wickser

**VERDUGO PATRONS**

David B. Ahern  
Polly & Jamie Anderson  
Steven Chapman & Ricardo Ordoñez  
Nancy Hathaway (The Wine Vault)  
Cathy Jurca  
Bonnye LaPenotiere Sirk  
(Rossmoyne Properties, Inc.)  
Alphonso Lascano  
Elaine & Bill Wilkerson

As of April 30, 2013

# NEW BOARD MEMBER



## Ammar Kharouf Joins Board

**W**e are pleased to welcome our newest Board member, Ammar Kharouf.

A relatively recent arrival in Glendale, Ammar joined TGHS in 2011 when he and his partner Guy purchased Lewis House, a historic 1927 Mediterranean Revival house located in the Royal Boulevard Historic District. They have been continuing the loving restoration of the property that was started by the previous owners, and it is this appreciation for preservation that brought Ammar to the Board.

Ammar has served on our Events Committee and volunteered as a lead docent at our 2012 Home Tour. He was appointed to the Board to fill a vacancy and will stand for election to fill the remaining year of the term in August 2013.

A graduate of American University and the University of California-Hastings College of the Law, Ammar is head of litigation for Public Storage, the largest self-storage company in the world, with its corporate headquarters right here in Glendale.

Ammar has been tasked with heading our fundraising efforts.

### GRAND CENTRAL continued from page 1

building to create a large, landscaped open space ("Air Terminal Green") to showcase the structure and provide some historical context; and the addition of interpretive site elements such as the footprint of the original airport concourse, taxiway and runway and possibly a vintage airplane.

Two major additions to the space include a new elevator and a connecting bridge to allow for interior accessibility.

Another important element of the project is the inclusion of a Visitor Center, as required by the development agreement, which will highlight the building's historic significance. Given that Grand Central will be used as office space for Disney employees, the Visitor Center will be open to the public on a reservations-only basis.

If you happen to have any old family photographs that show some of the missing historic features of the air terminal building, such as wrought iron grilles and interior and exterior light fixtures, please contact the project architect, John Berley, at 310-820-6680 or johnb@fisherpartners.net

It is expected that the project will be completed in 2015.





Photo: Gruen Associates

Rendering of Glendale Central Library with new doors and concrete steps at north façade.

## Alterations Proposed for Glendale Central Library

**B**uilt in 1973 and designed by the prominent architectural firm of Welton Becket Associates, the Glendale Central Library is a significant example of the Brutalist modern style, which is rare, especially here in Glendale. Welton Becket designed a number of iconic Los Angeles structures, including the Dorothy Chandler Pavilion, Mark Taper Forum, Beverly Hilton Hotel, Capitol Records Building and the Cinerama Dome.

The City has recently proposed a number of changes to the library building, including the reorientation of the entry by adding new doors at the north and south elevations and “grand entry” concrete steps at the north façade. The current entry at the east end of the building would be deactivated but not eliminated. Only glass and aluminum framing would be removed, and all structural concrete would remain. A wood-clad entry vestibule is proposed at the lower portion of the north wall. Other proposed alterations include the installation of an elevator and new stairway to enhance access and circulation, as well as the consolidation and relocation of the administrative offices. The “conversation pit” in front of the east entry, an important character-defining feature of the building, may be filled but the encompassed large ficus tree will remain.

TGHS met with library representatives to review the preliminary design earlier this year. The Society also attended a community meeting held at Glendale Central Library on April 8 and the Historic Preservation Commission (HPC) meeting on April 22. Throughout the process, TGHS has been clear about its concerns that the proposed renovations, taken as a whole, may affect the building’s architectural integrity and eligibility for listing on the Glendale and California Registers, as well as future listing on the National Register of Historic Places.

To that end, TGHS has been successful in requesting that the City’s architect, Gruen Associates, retain the services of a historic



Photo: Glendale Central Library - Special Collections

Located at the corner of San Fernando Road and Central Avenue, the building housed Hopper’s Office Furniture store from 1945 to 1988. Photo circa 1946.

## Tropico Project Threatens 1930s Spanish Colonial Revival Building

**T**he Glendale Historical Society (TGHS) is concerned about the proposed demolition of an architecturally unique 1930s Spanish Colonial Revival commercial building located at 3901 San Fernando Road.

A mixed-used development, known as “Tropico Project,” has been proposed for the site and the adjacent property at 3915 San Fernando Road. It would consist of 142 multi-family residential units, 10,000 square feet of retail/office space, 5,000 square feet of flexible space, and a two-level underground parking structure.

An Initial Study and a Notice of Preparation (NOP) of a Draft Environmental Impact Report (DEIR) has been prepared by the City of Glendale for the project.

TGHS believes that the building may be eligible for listing on the Glendale Register of Historic Resources as a surviving example of Spanish Colonial Revival commercial architecture and as defined in the state’s California Environmental Quality Act (CEQA) guidelines. A reconnaissance survey that was done for the San Fernando Corridor also found the building to be historically significant.

Between 1945-1988, the building was occupied by Hopper’s Office Furniture store. It was also featured on the Society’s 1982 Bus Tour as the only building that remains from Tropico’s main business district. Beneath the 1930s alterations, the building served as Logan’s Grocery Store and housed the Tropico Town Hall and library on the second floor.

All Photos: Ron Cressy



Mid-century medical building at 607 North Central built in 1964.



Mid-century medical building at 633 North Central built in 1960.



Mid-century medical building at 540 North Central built in 1953.

## Mid-Century Medical Buildings May Be Demolished

Three mid-20th century brick medical buildings located at 540, 607, and 633 North Central Avenue may be demolished to make way for the proposed North Central Avenue Apartments Project, which consists of two independent buildings constructed on opposite sides of Central Avenue at the Doran Street intersection. The developer, Carmel Partners, is proposing to develop a total of 507 multi-family residential rental units on the two sites. The City Council has already approved Stage I Design Review of the project pending the environmental evaluation during the Stage II Design Review hearing.

TGHS believes that the brick medical office buildings, developed by Gill Causey and Frank Rhodes, may be individually eligible for listing on the Glendale Register and possibly the

California Register and as defined in the state's California Environmental Quality Act (CEQA) guidelines. Causey and Rhodes also built the Glendale Register-eligible Glendale Garden Homes located at 1300-1315 North Central Avenue.

TGHS concurs with the findings of the City-adopted Historical Resources Technical Report prepared by Jones & Stokes Associates for the Glendale Downtown Specific Plan (DSP) that this unique grouping of post-World War II medical office buildings are "outstanding examples of a well articulated modernist vernacular" and eligible for listing on the California Register as a contributor to a historic district that "represent[s] the growth and development of the medical industry in Glendale in the 1950s and 1960s."

The red clad brick buildings located at 540 and 633 North Central were built in 1953 and 1960, respectively. The building at 607 North Central was built in 1964 and is clad in pale brick. The red clad brick building at 610 North Central has already been approved for demolition to make way for construction of a new six-story, 235-unit apartment building developed by Mill Creek Residential.

TGHS has voiced its concerns to City officials about the potential loss of these buildings and will request that a thorough historic analysis be prepared as part of the environmental review process. We will also call for project alternatives that include adaptive reuse rather than demolition of the buildings.

### CENTRAL LIBRARY continued from page 4

preservation consultant to evaluate the proposed renovations and ensure that the alterations are consistent with the Secretary of the Interior's standards. Ideally, a historic preservation consultant would have been brought on board at the beginning of the design process, as we were initially led to believe, but TGHS welcomes the involvement of preservation experts and anticipates their objective analysis.

It is expected that the proposed renovation plans for Glendale Central Library will be back before the HPC at its meeting on May 29 at 5:00 pm.

### TROPICO PROJECT continued from page 4

As part of the environmental review process, TGHS has requested that a thorough analysis be prepared to examine the architectural and historical significance of the building. TGHS has also asked that the Draft EIR identify project alternatives that do not include demolition of the building.

The Los Angeles Conservancy has also commented on the NOP and requested that the building be evaluated as a potential historic resource.

TGHS will continue to be involved as the Draft EIR is prepared and will advocate that the building be retained, rehabilitated and incorporated into any new project.





Photo: The Glendale Historical Society

## Vintage Wedding Gowns on Display

The Doctors House Museum is pleased to announce its latest exhibit, "Fit for a Queen – the White Dress that Started it All," showcasing a wonderful collection of vintage wedding gowns from the 1860s to the 1920s.

Queen Victoria has been widely credited with establishing the Western tradition of wearing a white bridal gown, which was quickly copied by wealthy, fashionable brides.

Victorian, Edwardian and Gatsby-era wedding dresses in The Glendale Historical Society's collection are currently on display at the Doctors House every Sunday, 2:00–4:00 pm (except Father's Day), now through June 30.



Photo: Peggy Dionne

New board member Ammar Kharouf is framed by Taste of Spain volunteers Sonia Montejano and Mona Vasiloiu. The festivities were held on April 21 at the 1929 Spanish Colonial Revival home of TGHS member Diane Spurlock.

## Dinner at the Doctors House Raffle Winners

This year's Dinner at the Doctors House raffle winners Elizabeth and Richard Berry invited their close friends Pam and Bruce Devine to dine with them on May 2. The warm spring evening provided the perfect backdrop for a champagne toast on the front lawn, followed by a casual tour of the house museum provided by Doctors House Director Sonia Montejano and Assistant Director Peter Rusch. The delicious five-course meal was eagerly and elegantly served by Sonia, Peter and Scott Halloran.



## TGHS Hosts AHSLAC Meeting

On May 4, The Glendale Historical Society hosted the spring mini-conference for the Associated Historical Societies of Los Angeles County (AHSLAC) in the gazebo of the Doctors House Museum. Over 25 members attended, representing regional districts including the San Gabriel Valley, Boyle Heights, Atwater Village, San Pedro and Mission San Fernando.

Each district representative reported on preservation efforts and heritage events in their respective communities, while Director Sonia Montejano and Assistant Director Peter Rusch discussed the four-year grassroots effort to save, relocate and restore the Doctors House. Lunch was followed by a tour of the Victorian house museum.

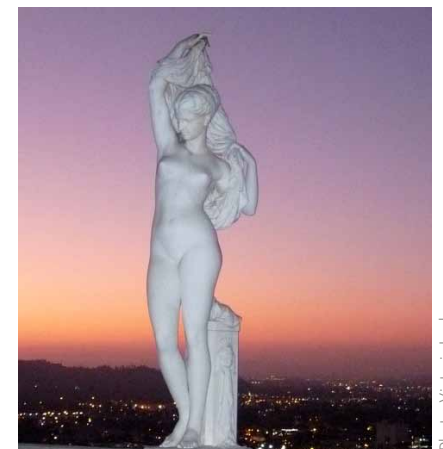


Photo: Victoria Lasten

## The History and Mystique of Forest Lawn

Last year's bus tour of Forest Lawn was sold out, and by popular demand, a similar but different tour, "The History and Mystique," is set for June 9 from 10:00 am–1:00 pm. Participants will enjoy history, architecture, and a continental breakfast hosted by Forest Lawn. TGHS members may purchase two tickets, \$20 for members and \$25 for guests. Mail checks to PO Box 4173, Glendale 91202, or purchase at [glendalehistorical.org](http://glendalehistorical.org) before this is announced to the general public.

# WELCOME

NEW & RENEWING MEMBERS: JANUARY 2013 - APRIL 2013

**JEWEL CITY PATRON (\$500)**  
Rima & Donnell Cameron - R

**VERDUGO PATRON (\$250)**  
Polly & Jamie Anderson - U  
Catherine Jurca - U

Alphonso Lascano - N  
Bonnye LaPenoteire Sirk/  
Rossmoyne Properties, Inc.

**TROPICO SUPPORTER (\$100)**

Jeri Anderson - U  
Irene Blore - R  
Shannon Cistulli - R  
Eva & Bill Fonnet - U  
Shirley Ann Hill - R  
Victoria & Scott Lasken - R  
Alen Malekian - R  
Paddi & Jeff Thomas - N  
Larry Tison - R

**SUSTAINING (\$50)**

Jeanie & Chris Bone/  
Casa Cordoba - N  
Barbara & John Conry - R  
Nadia DeWees - U  
David Gubser &  
Richard Lieboff - R  
Timothy Foy - R  
Scott Halloran &  
Peter Rusch - R  
Carol Koopman - U

Maureen &  
Sheridan Palladini - U  
Lynn Theard &  
Scott Peer - U  
Leonard Schaustal - U

**DUAL (\$40)**

Sydney & Bill Bennett - R  
Katherine Cahill - R  
Natalie Chaidez &  
Scott Lowe - U  
Shannon Davis - R  
Paula & Art Devine - U  
Barbara Don & Thomas Metzler - R  
Ruzka Eggena - R  
Lyn Foster & Glenn Webb - R  
Anita & Russell Hamden - R  
Sharon Hyder Dorris &  
George White - N  
Carol & Richard Heyes - R  
Shanna & Scott Igoe - R  
Holly Keenan &  
Jordan Levine - R  
Patricia Marsh &  
Michael Morgan - R  
Elizabeth Morris &  
Rebecca Maxwell - R  
Virginia & Ray Newburn - R  
Lisa Schultz & Ayre Gross - R

Elena & Erik Reppe - U  
Janna Siftar - N  
John Sims - N  
Brendan Turner - N  
Sharon & William Weisman - R  
Sandy & Woody Wise - R  
Katherine Wolfe - R

**INDIVIDUAL (\$25)**

Liz Avila - R  
Ute Baum - R  
Joyce Goodwin - R  
Damon's Steak House - N  
Sona Davtian - R  
Thomas LeMenager - N  
Isabelle Meyer - R  
Robin Oates - R  
Alyssa Resnick - R  
Mike Shea - R  
Diane Spurlock - U  
Frank Sumen - R  
Heather Victor - N

**SENIOR/STUDENT (\$15)**

Ross Adams - R  
Patricia Bates - R  
Margaret Bickmore - R  
Rita Cardenas - R  
Sean Crahan - R  
Peggy Dionne - R  
Daniel Fagan - R  
Dr. Ray Galloway - R  
Sandra Goff - R  
Sandra Haggerty - R  
Dolores Hawkes - R  
Bernadette &  
Larry Hovland - R  
Valerie Howard - R  
Ben Hubbard - R  
Claudia Jefferies - R  
Kumiko & John Mayhew - R  
Don McDonald - R  
Mary McVay - R  
Michael Mohill - R  
Irene Munafo - R  
John Riutzel - R  
Michael Sharp - R  
Diana Schillinger - N  
Mary Underwood - R  
Chris & Steven Warheit - N  
Bella Yegian - R  
Virginia Young - R

**NON-PROFIT (\$35)**  
Glendale Arts - R

**PAST PRESIDENTS  
LIFE MEMBERSHIP**

Deborah Dentler  
Carole Dougherty  
Andrea Humberger  
John LoCascio  
Marie Luft  
Steve Preston  
Bill Shepherd  
David Smith  
Arlene Vidor

N - New Member  
R - Renewing Member  
U - Upgrading Member

PLEASE CONSIDER A MEMBERSHIP UPGRADE THE NEXT TIME YOU RENEW.

## Join The Glendale Historical Society and Support Historic Preservation in Our Community

THE SOCIETY IS A NON-PROFIT tax-exempt organization, and we encourage you to join and volunteer. Please complete this form and mail it with a check payable to:

The Glendale Historical Society, PO Box 4173, Glendale CA 91202-0173

Brand Patron (\$5,000)

Goode Patron (\$2,500)

San Rafael Patron (\$1,000)

Jewel City Patron (\$500)

Verdugo Patron (\$250)

Tropico Supporter (\$100)

Sustaining (\$50)

Dual (\$40)

Individual (\$25)

Individual Senior

or Student (\$15)

Nonprofit (\$35)

Nonprofit organizations are encouraged to join TGHS as Associate Members (No voting rights)

Name ..... Phone .....

Street Address .....

City/Zip Code ..... Email Address .....

WANT TO GET INVOLVED? WHAT ARE YOUR INTERESTS?

Preservation Advocacy

Historic Districting

Fundraising

Special Events/Tours

Outreach/Education

Doctors House Volunteers

Historic Research/Surveys

Archiving/Organizing

Membership/Outreach

## 2013 EVENTS CALENDAR

**MAY 20 - 7:00 PM**

HOW TO CREATE A HISTORIC DISTRICT IN GLENDALE  
Perkins Community Room 118, 141 N. Glendale Avenue

**JUNE 9 - 10:00 AM - 1:00 PM**

THE HISTORY AND MYSTIQUE TOUR  
Forest Lawn Memorial-Park Glendale

**JUNE 1 & JULY 13, 10:00 AM & 1:00 PM**

ROCKHAVEN SANITARIUM GUIDED TOUR

**SAVE THESE DATES**

**AUGUST 3, 5:00-7:00**

ANNUAL MEMBERS MEETING  
Historic Le Mesnager Barn

**SEPTEMBER 29, 11:00-4:00**

2013 HOME TOUR: CLASSIC CASA VERDUGO

## ROCKHAVEN OPEN FOR EXCLUSIVE TOUR

**R**ockhaven Sanitarium in Montrose was established in 1923 and was built into its current configuration in the 1920s and 1930s in a mix of Craftsman and Spanish Colonial Revival architecture. It is the only intact example of the many sanitariums that were once a major industry in this area. The Historical Society of the Crescenta Valley has permission from the city to offer **TGHS members only** a one-hour guided tour through the 3-1/2 acre grounds, going inside 4 of the 15 buildings. Reservations are required, and groups are limited to 20. Members may select one of four times:

June 1, 10:00 am  
June 1, 1:00 pm  
July 13, 10:00 am  
July 13, 1:00 pm



Reservations are required. Call 818-242-7447 or email events@

glendalehistorical.org and specify your first and second choices of dates and times. Provide the names of all TGHS members in your party. You will receive a confirmation and arrival details. This tour is free, but members are encouraged to join or donate to the new Friends of Rockhaven group.