



ir 2000

The Glendale Historical Society

NEWSLETTER VOL. 3, NO. 3, 1982

THE SOCIETY'S GIFT TO GLENDALE

In a joyful dedication ceremony attended by more than 500 people, The Doctors' House was presented to the City of Glendale on Sunday afternoon September 19. Glendale Historical Society president Carole Dougherty and Project Co-ordinator Marie Luft presented the key to the house to Mayor Robert Garcin and cut a white ribbon to officially open the residence to visitors.

The afternoon marked the culmination of over two years' planning and labor on the siting, exterior restoration, and landscaping of the house. The Queen Anne-Eastlake style residence whose threatened demolition prompted the formation of The Glendale Historical Society has been transformed from a faded old house to a sparkling, inviting home in a garden setting at the foot of the Verdugo Hills. When the interior restoration is completed it will serve as a museum and exhibit facility. The rooms will be decorated and furnished in their historic style, but will subtly include such practical amenities as a working kitchen, a restroom accessible to the handicapped, and an office for The Glendale Historical Society. The Parks and Recreation Department will maintain the house, with the aid of volunteer community groups who will assist visitors and staff events.

From the paint colors used on its walls to the palm tree transplanted near its southeast porch, the exterior of The Doctors' House has been restored to duplicate as closely as possible its appearance in 1901. This strict historic approach is also being followed in the interior restoration. Special features include

- a chimney reconstructed using old photographs
- hundreds of porch spindles and moldings individually stripped and then repainted
- complete rewiring of the house
- new plumbing work, which will incorporate antique fixtures
- special fireproof cedar shingle roofing
- exterior paint in three shades of gray-blue approximating the original color of the house
- new heating and air conditioning
- a basement with a traditional sloping door

As seen in the many exhibits within the house on the day of the dedication, the restoration is proceeding so well because of the combined efforts of many individuals, businesses, and community groups. The afternoon provided a chance for them all to see and celebrate the results of their thousands of hours of work, their generous contributions of funds, and their common interest in the project. City officials, contractors, consultants, volunteers and interested members of the community were able to enjoy together this new attraction in our city.

As the new cornerstone denotes, The Doctors' House has two propitious dates in its history: the year it was built--1890; and the year it was relocated for a new purpose--1980.

Suzanne McKay

UPDATE ON THE EGYPTIAN VILLAGE CAFE

We last left readers of this newsletter waiting for the Supplemental Environmental Impact Report being prepared by Doanld A. Cotton Associates on four redevelopment projects including the Holderness project and the Egyptian Village Cafe.

The report recommended a minimum development scenario for the Holderness project because it would substantially mitigate the major adverse impacts of the four developments on Brand Boulevard: traffic circulation, air quality and historic resources.

While the maximum development scenario was not recommended, the report did state that demolition of the Egyptian Village Cafe could be partially mitigated by utilizing the skylight of the EVC between two high rise office tower buildings.

At an August 31 public hearing on the Supplemental Environmental Impact Report, the Historical Society requested further studies--particularly studies incorporating the EVC into a maximum development scenario.

Two weeks later on September 14 the results of a study by Thirtieth Street Architects, Inc. indicated that the exterior of the Jensen Building and the portion housing the EVC could be restored at a cost of \$899,000. The functioning building would produce an 11% return to the developer when considered as a unit and more when considered as a part of the total project.

American Trading Real Estate Company, Inc. the financier for the project, rejected this possibility because keeping the Jensen Building in place would cause inefficient subterranean parking; would force a five story height increase in the northern tower with attendant higher building costs, and would reduce rental rates for a building which faced Wilson Avenue rather than Brand Boulevard.

Facing an almost assured vote in favor of American Trading the Historical Society maintained its position that it favored restoration in place but would consider alternatives. However, at the time of the hearing the developers' proposal to use their "best efforts" to recreate or relocate the significant elements of the EVC somewhere in the project was too vague to consider. The Society requested being involved in phase II of the project - the phase affecting the EVC. There was no response to this request.

The vote in favor of American Trading's proposal with Jack Day absent was 4-0.

Carole Dougherty

THE RE-CREATION OF A HISTORIC INTERIOR

Among the items needed to create an 1890's mood inside a house, few are more important than wallpaper. Victorians paid great attention to their walls and ceilings; and indeed without the appropriate background and characteristic colors and patterns, the furnishings of the 1890's would appear misplaced.

Research and work over the last eighteen months has resulted in some final selections for wallpapers for The Doctors' House, all based on a commitment to a strict historic approach. Where no clues to the actual early decor of a room could be found, we interpreted within the guidelines of the period. Following the procedures established by various restoration authorities, we started by trying to find bits of original wallpaper still on the walls. Since most of the broad wall surfaces had been stripped of the early succession of paints and papers, this meant poking into every crevice and hidden or protected place. Bea Pennial catalogued all finds extracted by us and found by volunteers. We pulled layers, recorded sequence of treatments, and finally dated the papers using dates of alterations and remodellings that were known to us. We also contacted experts to verify that our dates were accurate and that our samples were representative.

Although we found the c. 1895 wallpaper of the kitchen and pantry in its complete repeat, we were not so lucky in the dining room and parlor, which originally shared a common wall decor. We did not have a large enough sample of the paper, which had a design in burgundy and silver on a warm pink ground, to determine the full pattern. Phillip Dockter, trained in graphics design, broke down the pattern into its original design components and produced a scale stencil for each. By reassembling the elements using all known relationships between the units and by experimenting with a series of reasonable assumptions for the unknown relationships, Phillip established dual inverted hearts as the predominant motif. His work produced a nearly full repeat, requiring only two small areas of interpretive design.

Lee Sale is now capably developing a plan of implementation for the restoration wall coverings. She has scheduled custom replication for the two main papers, "dining room/parlor" and "kitchen/pantry". Our budget does not permit custom replication at this time for every room. However, we will use wallpapers which will be custom-colored to match our extracted samples and which have patterns suggestive of the originals. Our task is aided by the availability of certain wallpapers already replicated by other preservationists.

Like other aspects of this exciting project, the work on wallpapers has been a combined effort of many individuals. They have all applied their own special talents to ensure that The Doctors' House interior will have a pleasing and historically accurate background decor.

Sue Lazara, Jaycees Auxiliary

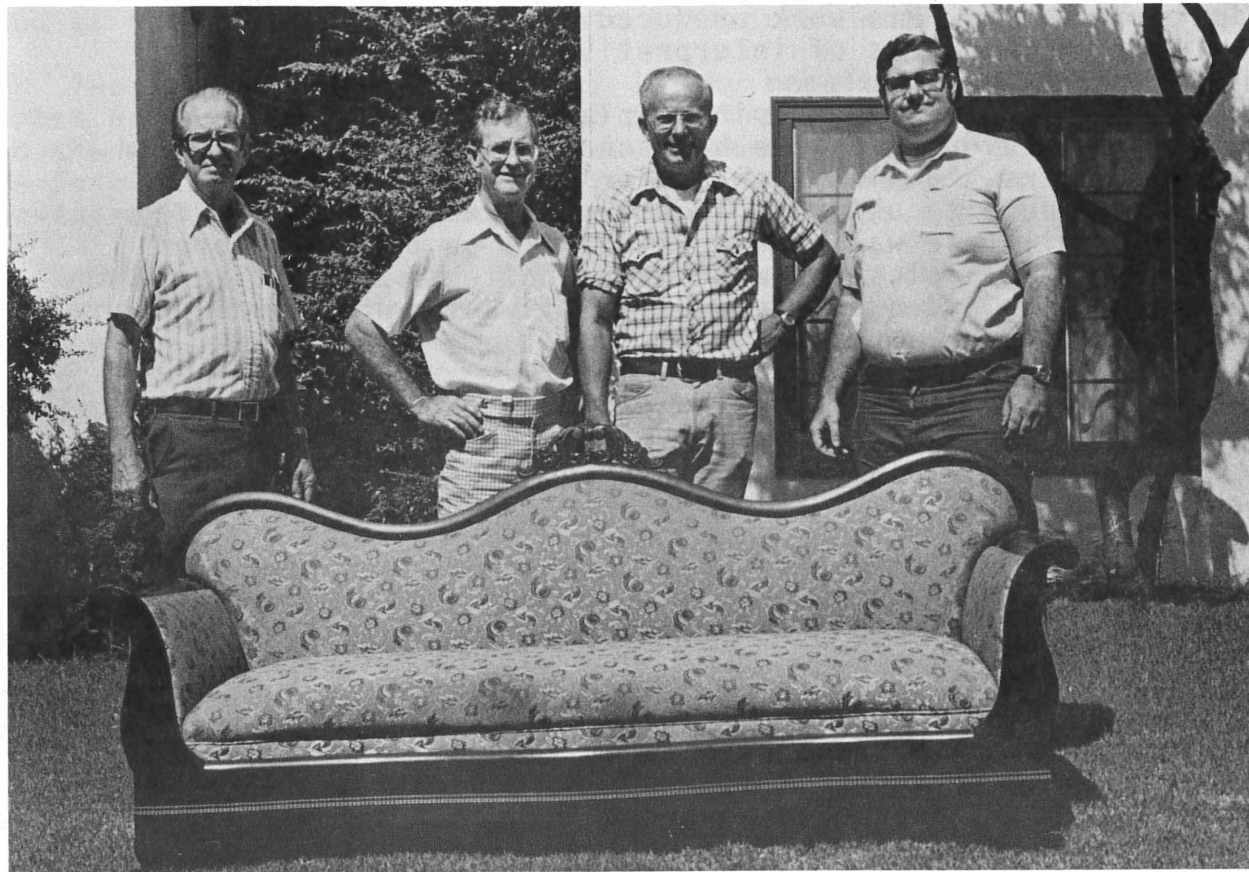
* * * * *

IN APPRECIATION

Many thanks to the boys from Boy Scout Troop 121 and Scoutmaster David Wally, who spent the night preceding the Dedication inside The Doctors' House. Their presence safeguarded the important and valuable objects in the house at that time, and we are grateful for their assistance.



...and president... a scale... for...
 ...the...
 ...the...
 ...the...
 ...the...



THE GLENDALE HISTORICAL SOCIETY

Calendar of Events for Autumn, 1982

- OCTOBER 6 ANNUAL GENERAL MEETING OF THE GLENDALE HISTORICAL SOCIETY.
Wednesday Election of Board Members. President's Annual Report.
Presentation of Awards.
- OCTOBER 9 Claremont bus tour, by Claremont Historic Resources Center
Saturday and Claremont Heritage. 2:00 to 4:30. Telephone (714)
621-0848.
and
Introduction to Preservation, free workshop sponsored by
L. A. Conservancy. 10 a.m., Gallery Theatre, Barnsdall
Park. For information call 623-CITY.
- OCTOBER 11 "Myron Hunt-Architect of the Library", lecture by Alson
Monday Clark, architectural historian. 7:30 pm at Pasadena Main
Library. Free. Contact Pasadena Heritage, 793-0617.
- OCTOBER 16 Webb's Day. Webb's will donate a percentage of your sale
Saturday to us if you mention The Glendale Historical Society.
A good day to do your Christmas shopping and help our
organization.
- OCTOBER 21, "Days of the Verdugos" Community Fair organized by the
22,23,24 Glendale Jaycees and the Days of the Verdugos Association.
Thursday- A 30-year tradition celebrating Glendale's Spanish heritage.
Sunday Verdugo Park. The parade on Brand Boulevard will be held
on the preceding Saturday, October 16.
- NOVEMBER 3 General meeting of TGHS. Jackie Wilson, Executive Director
Wednesday of the Historical Society of Southern California, will
speak on "Aspects of Preservation in Southern California".
- NOVEMBER 13 "Turn-of-the Century Los Angeles", bus tour visiting six
Saturday landmark buildings from the boomtown era of the city.
10 a.m. to 3 p.m. leaving from Union Station. \$18.00.
Conducted by 'Round Town Tours, 836-7559.
- DECEMBER 10 Christmas Home Tour, including the Doctors' House and other
Friday Glendale residences decorated for the holidays. 12:00 noon
- 8:00 p.m., by the Hoover High School PTSA.
- DECEMBER Annual holiday celebration and installation of officers.
Further details will be announced.
- JANUARY 5 General meeting of TGHS. Edward Carpenter will speak on
Wednesday "Historic Cemeteries of Southern California".

General meetings are held monthly (except December, July and August) at 7:30 p.m., on the first Wednesday of the month, in the Carrillon Room, Glendale Federal Savings, 401 North Brand Boulevard. Telephone:242-7447.



4



5



6



7



PHOTO CAPTIONS

1. Smiles all around. Treasurer Dick Montgomery happily presents a check for \$ 5,779.81 to John Gregg and Sal Gangi who in 1980 advanced the Historical Society \$30,779.81 to move the Doctors' House and for some carpentry and Foundation work at the new site. (Photo courtesy of Carole Dougherty.)
2. Sofa for Doctors' House Living Room. TGHS resident furniture movers Shannon Pedlow, Dick Montgomery, Bill Dodson and Dale Hales pose behind sled sofa, circa 1885, donated to the Historical Society by Vernon Wollard of San Clemente. (Photo courtesy of Carole Dougherty.)
3. Interior of Jensen's Palace Grand Shops with the Egyptian Village Cafe area visible on the second floor. The second floor retains most of its original character and the Society continues its efforts to save it from demolition. (Photo courtesy Special Collections, Glendale Central Library. Photo c. 1923.)
4. Dedication Ceremonies at Brand Park, Sunday September 19th were enjoyed by restoration participants, Society members, and the public. (Photo courtesy of Robert Newcomb.)
5. The climax of the dedication program was the ribbon-cutting and the presentation of the Doctors' House key to Glendale Mayor Robert Garcin. (Photo courtesy of Robert Newcomb.)
6. Landscaping by the Glendale Parks and Recreation Department includes a palm tree which recalls the one at the original site of the house. (Photo courtesy of Robert Newcomb.)
7. Sid Gordon and Irene Blore add a touch of nostalgia to the dedication ceremonies. (Photo courtesy of Robert Newcomb.)

* * * * *

MEMBERSHIP

Welcome to new members Maude Gentry, Marjorie Gillin, Edith Yeagle, Marjorie Schramling, Mr. and Mrs. Raymond H. Wallace. Jeanne Massingill, Larry Stevens, Connie Meadows, Linda Lujan, Dolly Duggan, Glendale Galleria Merchants Association, Lukes De Croupet, and Mary Merrill Doerr.

Thanks to all renewing members for your continuing support. Your renewal month appears in the upper right-hand corner of your mailing label, and you will receive newsletters and other notices while your membership is current. Annual dues are \$15.00 for single active, \$25 for family active, \$50 for sustaining, \$5 for student/senior/disabled, \$25 for nonprofit organization, and \$100 for corporate.

Name _____

Address _____ Zip _____

Phone _____ () New Member () Renewing Member

I would like to assist in the following area(s):

EDUCATION
RESEARCH
CLERICAL

PRESERVATION ACTION
PROGRAM DEVELOPMENT
NEWSLETTER

MEMBERSHIP
WAYS AND MEANS
OTHER _____

DOCENTS NEEDED FOR APRIL TOUR

A walking tour of the Brand Park neighborhood is scheduled for late April. For our popular tours 50 or more docents and guides are needed. In return for the time given for training and on the day of the tour, docents and guides may take the tour for no charge. Anyone interested in this fun and expanding experience, please call 242-7447 and leave a message on the tape.

* * * * *

PUBLICATIONS AVAILABLE

The following books are available and can be ordered through Shannon Pedlow, 242-7066:

Glendale Area History, Eric Schneirshon & Carroll Parcher. (\$45.00 plus \$2.93 tax = \$47.93)

The Glendale Historical Cook Book, Audrey Hales. (\$6.00)

The End of an Era, L. A. Hall of Records. (\$1.00)

Glendale Casa Adobe History, J. Marshall Miller. (\$3.00)

From Pueblo to Metropolis, L. A. Department of Water and Power. (\$1.00)

* * * * *

NAME BADGES

Personalized name badges for use at tours and other events may be ordered through Helen Pedlow, 242-7066. Priced at \$3.00, each badge is made of heavy plastic and includes our logo, organization name, and member's name.

* * * * *

Many thanks to Sue Read and Meredith Quenon for doing typing for this newsletter.

The Glendale Historical Society
P. O. Box 4173
Glendale, California 91202

| |
|--------------------------------------------------------------------------------|
| Non-Profit Org. U.S. Postage PAID Glendale, Calif. Permit No. 1183 |
|--------------------------------------------------------------------------------|