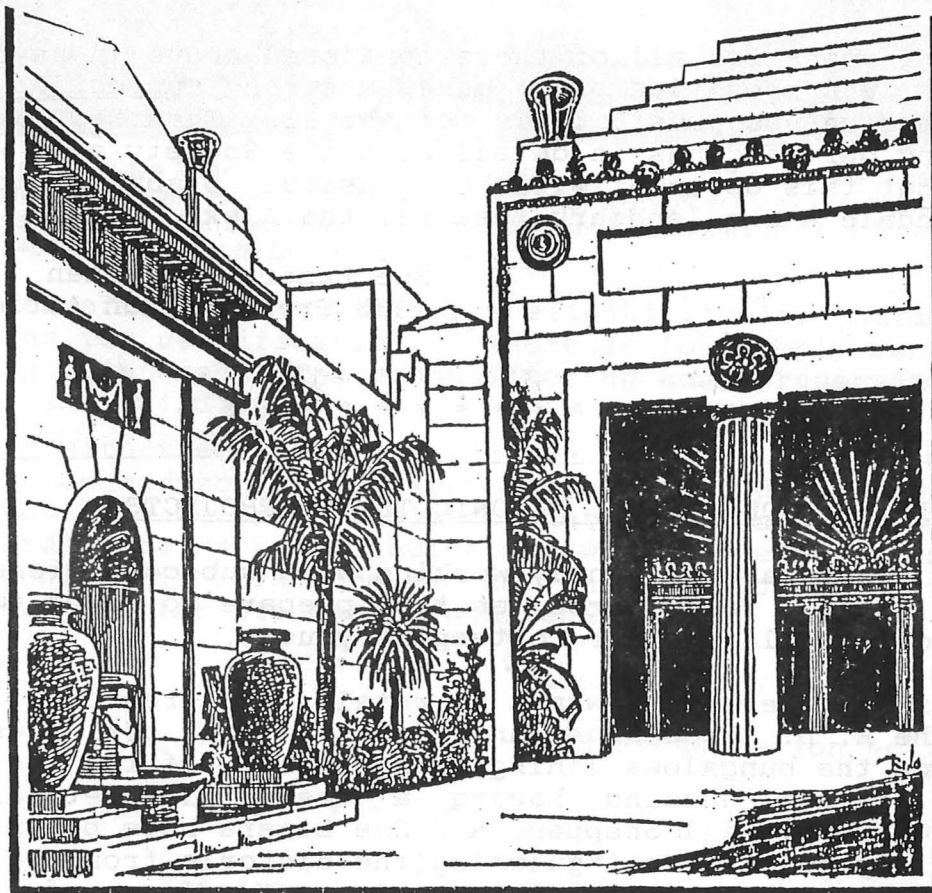




The Glendale Historical Society

NEWSLETTER VOL. 9, NO. 2, 1988

Alex Captures Community Attention



Cover illustration from "Glendale Daily Press" special section honoring the opening of the Alexander Theatre, September 3, 1925.

The Alex Theatre was both the subject and the location of a Public Arts forum held on Saturday morning, March 5, to discuss the need for a performing arts center in Glendale and the possible role of a converted Alex in fulfilling this need. The event, organized by the Glendale Arts Council, included presentations by Arts Council Executive Director Kathryn Hull, Glendale Historic Preservation Commission President Vonnie Rossman, Glendale Historical Society President Dr. Robert Newcomb, Glendale Partners representative John Hedlund, and Councilman/Glendale Redevelopment Agency member Carl Raggio. *(Continued)*

This was our first opportunity to share the preliminary findings of the current major TGHS Preservation Action Task Force project: a position paper and supporting research documents on the potential of the Alex for re-use as a live theatre/concert hall. This paper, based on many months of exciting and challenging work, has been submitted for final Board review and will now be presented to arts and municipal leaders at specially arranged meetings.

It has been a great privilege to work with the extraordinary people on this Task Force committee. Jeanne Graves, Connie Humberger, Dan Leimeter, and David Smith have each made invaluable contributions to the planning, data search, compiling and drafting work involved. Andrea Humberger has dedicated many evenings after work to computer support, and new members Christina Garey and Andrew Caballos have assisted along with Bill Sheppard and Barbara Leimeter in gathering special information. Last, and very importantly, we were fortunate enough to receive advisory support and professional guidance from Christy Johnson McAvoy, on the broad preservation issues involved.

I think I speak for all of those mentioned above in saying that we believe this 1988 position paper makes a strong supporting case for the conservation and re-use possibilities of the Alex Theatre. We look forward to sharing our findings in detail with the Society as a whole, and we are hopeful that this document will be a useful planning tool for the future of Glendale's own landmark theatre, the Alex.

Sue Lazara, Chairman
TGHS Preservation Action Task Force

* * * * *

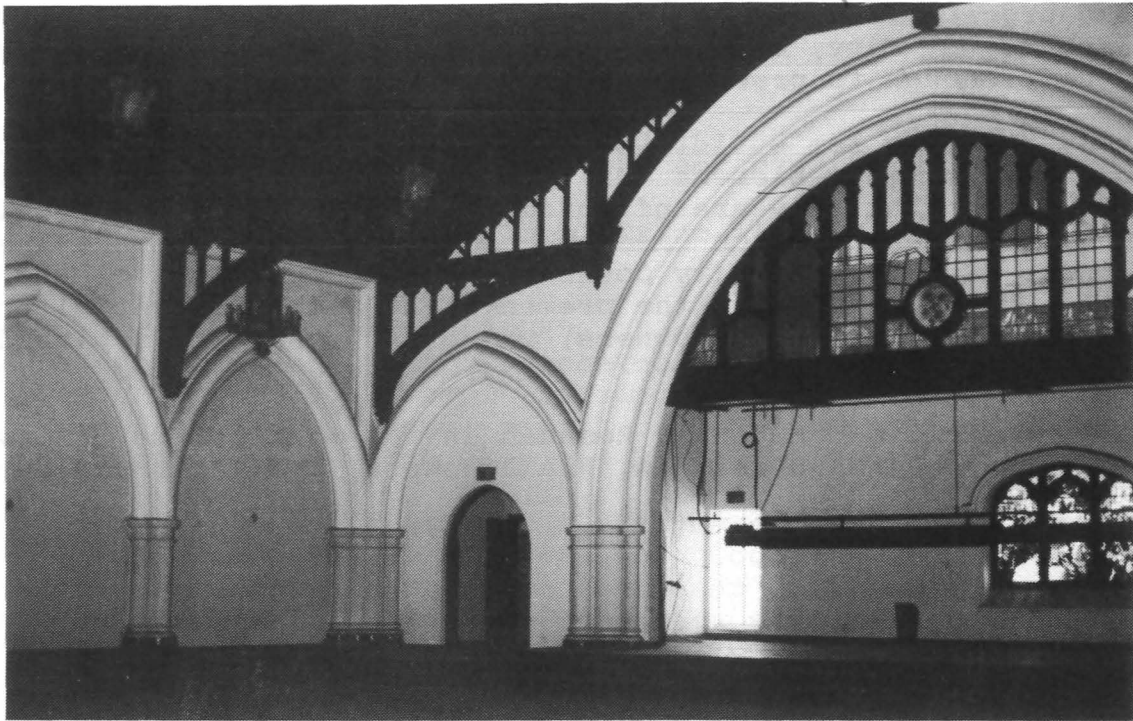
TASK FORCE AIDING GOODE HOUSE, MASONIC TEMPLE PROJECTS

Property owners are currently working with sub-committees of the TGHS Preservation Action Task Force as they prepare to adapt two well-known historic Glendale buildings for contemporary uses.

New owner Mr. Joe Ayvasi wants to retain and restore the historic elements of the E. D. Goode House and convert it for office use. He would like to replace the bungalows lining the perimeter of the lot with low-rise senior citizen housing having a residential setback. Committee members Judy Cabrera, Bill Sheppard and Sue Lazara have begun the task of assisting Mr. Ayvasi in distinguishing the historic from the non-historic features of the house. This involves taking scrapings of paint, using microscopes for analysis, taking wood samples, and making lists of the details of this home--one of only two (the other being The Doctors' House) surviving Queen Anne-Eastlake style structures in Glendale.

More volunteers are needed for this project. If you are interested in learning about and participating in restoration, phone Sue Lazara (evenings) at 241-5597.

The Masonic Temple sub-committee of the Task Force has been working with the building's owners, Frank De Pietro and Sons, in refining their plans for its rehabilitation and adaptive re-use as office and commercial space. We have consulted with Steade Craigo, Senior Restoration Architect in the California State Office of Historic Preservation, about aspects of



Owners Frank De Pietro and Sons will completely renovate and adapt the former Masonic Temple's magnificent 7th-floor Cathedral Room, as well as its other floors, to suit tenants' needs. For leasing information about this 234 S. Brand Building, telephone Dennis or Robert De Pietro, (213) 461-4253. (Photo by Dennis De Pietro)

the plans which affect the structure's eligibility for National Register nomination and tax certification (10% credit for simply rehabilitating an older building, 20% credit for rehabilitating and preserving a historically significant building).

Our work with the De Pietros will be ongoing, as they work their way through City code and zoning requirements and hold discussions with prospective tenants. We are optimistic that this adaptive re-use of one of Brand Boulevard's most striking buildings will serve as an example of how preserving a historic structure can not only enhance the city but also be a financial success for its owners and tenants.

Suzanne McKay
Sue Lazara
TGHS Preservation Action Task Force

* * * * *

PLAQUES WILL MARK HISTORIC SITES

Twenty-nine of Glendale's most historically and architecturally significant sites, as identified in the City Planning Division's 1977 Historic Preservation Element of the General Plan, are currently being further distinguished by brass plaques which will serve as historic site markers. The City's Historic Preservation Commission, under the direction of President Vonnie Rossman, has been working with the property owners in choosing the wording on the 12" by 18" plaques and determining the exact location for each of them. The funding for this recognition program is provided by the City budget. Property owners who wish to do so may receive their plaques publicly in ceremonies held at City Council meetings. Public visibility of the plaques does not imply public access, and the property owners retain their right to privacy.

This program is a most welcome acknowledgement of the importance of these sites to our city, and gives well-deserved recognition to owners who know and care enough to preserve their valuable buildings.

It is possible for buildings to be added to the list of sites in the Historic Preservation Element of the General Plan if it is discovered through research that they are of sufficient historical or architectural importance. Reviewing such research and making recommendations to the City Planning Division and City Council are also functions of the Historic Preservation Commission. At the present time four residential properties are being researched by their owners, who wish to have them placed in the Element.

Joining President Vonnie Rossman in the work of the Commission are members Jo Gudel, Linda Shahinian, Frank Howard, and Clair Earl.

Suzanne McKay

* * * * *

DOLL DAY AT THE DOCTORS' HOUSE

As part of this year's celebration of The Doctors' House centennial, a program on antique dolls will be held in the house on Saturday, May 7. Doctors' House docent Lu Ann Sauter, charter member of the Jewel City Doll Club and member of the United Federation of Doll Collectors, will be giving a presentation on dolls from the 1700's to the 1940's, particularly during the "golden age" of dolls around 1800. She will show dolls from her personal collection and, at the end of her talk, will share her expertise with those who bring their own dolls.

The program, which will be offered at 11 am and 2 pm, will include light refreshments. The cost is \$5, and, as seating is limited, reservations are necessary. To make a reservation, call Mary Sheppard (244-7646) or Lorraine Zabar (241-8283).

* * * * *

TGHS SPEAKERS BUREAU AVAILABLE FOR GROUPS

Our TGHS Speakers Bureau has two slide programs which are entitled "The Renovation of the Doctors' House" and "Historical Properties in Glendale -- Past and Present." We are always happy to present these programs in our community. If you know of any group which would be interested in this type of program, please have them contact Judy Cabrera, Speakers Bureau Chairman, at 241-5302.

* * * * *

Newsletter Editor: Suzanne McKay Assistant Editor: Dr. Robert Newcomb

Thanks to Helen Wrede for typing the newsletter, and to Bob Woodring and Daphne Lindstrum for their help in the bulk mailing.

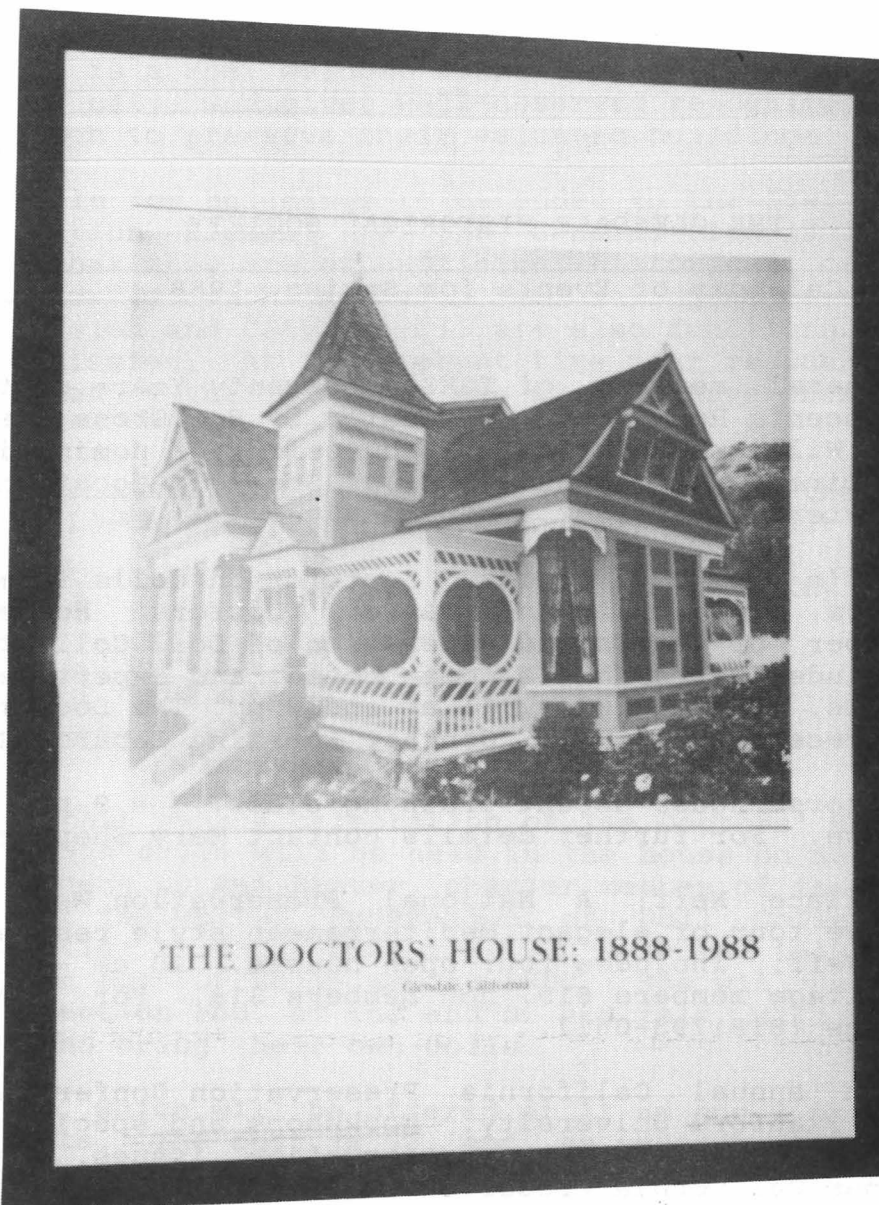
THE GLENDALE HISTORICAL SOCIETY

Calendar of Events for Spring, 1988

- MAY 4
Wednesday General meeting of TGHS. "Seventy Years of the Glendale-La
Crescenta Red Cross", presented by Red Cross Executive Direc-
tor William B. Dutton. Announcement of nominations for Board
of Directors (three seats). Special location: Red Cross
Chapter House, 1501 S. Brand Blvd. 7:30 pm.
- MAY 7
Saturday "Let's Play With Dolls". Lectures on dolls from the 1700s to
1940s, given by Lu Ann Sauter, Doctors' House docent and
member of the United Federation of Doll Collectors. Program
includes refreshments, open house, and expertise on guests'
dolls. Held twice, 11 am and 2 pm, The Doctors' House. \$5,
by reservation only. Contact Lorraine Zabaro, 241-8283.
- MAY 9,16,23
Mondays Doctors' House docent Training class. 7 - 9 pm, The Doctors'
House. For further details contact Mary Sheppard, 244-7646.
- MAY 14
Saturday "Wallace Neff: A National Preservation Week Tour". Self-
drive tour of elegant Mediterranean style residences designed
by Neff. Includes four open houses. 10 am - 4 pm. Pasadena
Heritage members \$15, non members \$18. For further details
phone (818)793-0617.
- MAY 19-22
Thursday-
Sunday 13th annual California Preservation Conference. Palo Alto
and Stanford University. Workshops and special events relat-
ing to contemporary preservation issues. For information
phone California Preservation Foundation, (415) 527-7808. To
join our members who are attending phone TGHS at 242-7447.
- MAY 21
Saturday Book sale. Pasadena Historical Society garden, 470 W. Wal-
nut, Pasadena. 8:30 am - 3:00 pm.
- MAY 21,22
Saturday,
Sunday Annual Carroll Avenue (Echo Park) historic house and neigh-
borhood celebration. Nine open Victorian homes, craftsman,
exhibits (including TGHS booth), refreshments, music, antique
cars. 10 am - 4 pm. Admission \$8, or \$4 for ages under 12
and over 65. For information contact Carroll Avenue Restora-
tion Foundation, (213)250-5976.
- JUNE 1
Wednesday General Meeting of TGHS. Business meeting. Election of
Board of Directors. President's annual report.
- JUNE 5
Sunday Lafayette Square House Tour. Los Angeles Conservancy walking
tour. 10 am - 4 pm. For information phone (213) 623-CITY.
- JULY
TGHS membership renewals due for 1988-1989 year.

--- Continuing ---

- Sundays The Doctors' House, Brand Park, 1601 W. Mountain. Open free
to the public from 2 pm to 4 pm. Docent-guided tours of the
restored Queen Anne-Eastlake style home.

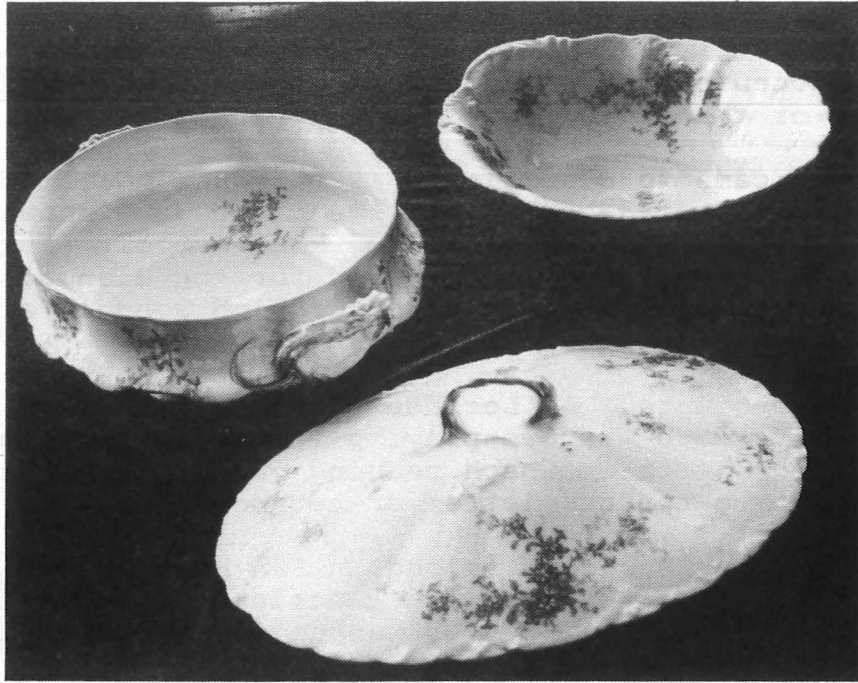


POSTER HONORS DOCTORS' HOUSE CENTENNIAL

To commemorate the centennial of The Doctors' House, The Glendale Historical Society has produced a museum-quality poster featuring a full exterior view of the home. The evocative black and white photograph was taken by La Crescenta photographer Joe Campanelli, and Doctors' House docent Karen Cline did the graphic design. The poster, measuring 18" by 24", is priced at \$5.00 and can be purchased at The Doctors' House on Sunday afternoons from 2 pm to 4 pm. Together with other photographs of the House and artifacts from the late Victorian era, it has been on display in each branch of the Glendale Public Library system during the months of March and April.

Many thanks to Joe Campanelli for the great care and attention he gave to this project, and to Karen Cline and Mary Sheppard for their work with the printers, Typecraft in Pasadena. Thanks also to library liaison Cindy Carr and to Rita Stafford, Almetta Hames, Larry Meyer, Marie Luft, and Bill Sheppard, who served on the poster committee. And finally, a note of thanks to Karen Nielson Hovanitz of the Pasadena Historical Society, who generously shared with us her knowledge and poster expertise.

Suzanne McKay
Publications Committee



SEARCH ON FOR DOCTORS' HOUSE CHINA

This picture by Joe Campanelli clearly shows the design of green ivy on white, the official china pattern of The Doctors' House. It is Haviland #834A. We have only two pieces. Could you help us to find a plate, a cup, a whole set? It would be another realistic feature at The Doctors' House and could form a table setting on special occasions. If you can help, please contact Lorraine Zabaro at 241-8283.

Mary Sheppard
Doctors' House Liaison

* * * * *

MAKE YOUR ADVERTISING DOLLARS WORK

You can now publicize your business while supporting The Glendale Historical Society. When you run an advertisement in this newsletter, your message reaches more than 140 Glendale households for an estimated readership of over 360. In addition, the newsletter receives wide distribution to policy makers, community organizations, and the public at large. For information concerning rates and publication dates, call Suzanne McKay (evenings) at 244-9456.

* * * * *

TGHS SEEKING STORAGE SPACE

The Glendale Historical Society is seeking a safe, secure place to store our ever-growing files and collections. In addition to holding our organization's administrative materials, storage space could also be a repository for historic artifacts, scrapbooks, photographs, and so on which we are occasionally offered. If you could provide such a space, please contact Historian Jamee Harasick at 240-1444.

MEET THE NEW DOCENTS

Three new docents are leading tours at The Doctors' House following their completion of the fall, 1987 docent training class.

Helen Wrede came to Glendale in 1946 from Niagara County, New York. In 1955 she moved to Granada Hills, but returned to Glendale in 1978 after her two children had graduated from high school. Helen's family has strong ties to Glendale: her mother worked for the Glendale Police Department, her brother graduated from Hoover High School, and husband Bob's family came to Glendale in the 1930's.

Helen is an accountant at Lockheed, and is active in Masonic fraternal organizations. She enjoys playing the organ, and has recently been certified as a tutor in the Laubach reading program. Helen also contributes to TGHS by typing the newsletter on her word processor.

Mary Belle Clark, born and raised in San Marino, is a 5th generation Angeleno. She graduated from USC with a business major and currently does accounting and word processing for an environmental studies company in Pasadena.

Active over the years in clubs and the PTA, she enjoys sewing and avidly participates in boating and water sports with her husband and two daughters.

Los Angeles native Grace Geary now resides in Burbank. She graduated from Manual Arts High School in L.A., and recently completed 37 years with what is now Pacific Bell. Grace enjoys her family of two children and five grandchildren, and likes to bowl, golf, and garden. She discovered The Doctors' House when visiting Brand Park about a year ago, and that same day expressed an interest in being a docent. The house reminded Grace of her great aunt's farm house. Part of the farm was eventually sold and became the site of Manual Arts High School.

A warm welcome and thank you to Helen, Mary Belle, and Grace. Our Docent Guild is a truly wonderful group of people. Persons interested in being a docent are invited to participate in the next docent training class, to be held Monday evenings May 9, 16, and 23. For further information contact Mary Sheppard at 244-7646.

Mary Sheppard
Docent Chairman

* * * * *

THANKS TO HOSPITALITY VOLUNTEERS

Our monthly general meetings give us the chance not only to learn about local history and preservation but also to become involved in our organization's activities. Both are made even more enjoyable by our refreshment volunteers, who provide the goodies to accompany our business and socializing. Many thanks to the following people, who have brought refreshments for our meetings this past year: Betty Zilmer, Dorothy Krieger, Jamee Harasick, Isabelle Meyer, Jean Felkel, Marge Schramling, Betty Hutchings, and Sid Gordon. We appreciate your talents and generosity!

Helen Pedlow
Hospitality



Hostess Isabelle Meyer welcomes guests to The Doctors' House centennial program, "Life in the 'Nineties", held on January 23. (Photo by Bill Sheppard)



Docent Chairman Mary Sheppard and Docent Almetta Hames model our Doctors' House teeshirts after assembling the Doctors' House photographs, memorabilia, and merchandise which were on display in each of Glendale's six branch libraries during March and April. (Photos courtesy Almetta Hames)



MEMBERSHIP

Welcome to new members Mr. and Mrs. Brian Leng, Gary Siglar, Bradley Barnes, Christina Garay, Cynthia Carr, Ella Mae Rosvall, Mary Alice Wol- lam, and Maria Apollo.

Membership in the Glendale Historical Society is open to all persons interested in learning about, promoting, and preserving aspects of Glendale's history. Members receive quarterly newsletters, announcements of events, discounts on TGHS tours, and the opportunity to work on a variety of projects. Annual dues are \$15 for single active, \$25 for family active, \$50 for sustaining, \$5 for student/senior, \$25 for non-profit organization, and \$100 for corporate.

General meetings are held monthly (except December, July and August) at 7:30 p.m. on the first Wednesday of the month, in the Carrillon Room, Glendale Federal Savings, 401 North Brand Boulevard. Telephone: 242-7447

NAME _____

ADDRESS _____ ZIP _____

PHONE _____ () New Member () Renewing Member

I would like to assist in the following area(s):

EDUCATION
RESEARCH
CLERICAL

PRESERVATION ACTION
PROGRAM DEVELOPMENT
NEWSLETTER

MEMBERSHIP
WAYS AND MEANS
DOCENT GUILD

OTHER _____

* * * * *

The Glendale Historical Society
P. O. Box 4173
Glendale, California 91202

Non-Profit Org.
U.S. Postage
PAID
Glendale, Calif.
Permit No. 1183

