



## The Glendale Historical Society

VOL. 9, NO. 4, 1988

---

### THE DOCTORS' HOUSE: COMMUNITY INVOLVEMENT INCREASES

---

Under the dynamic and creative leadership of Doctors' House City Liaison and Docent Chairman Mary Sheppard, The Doctors' House is becoming increasingly prominent in enabling Glendale residents to learn about and celebrate their city's history. The enthusiasm of the docents, the authenticity of the restoration and furnishings, the co-operation of the City Parks and Recreation Department, and the pride of local citizens in their heritage are combining to create a very active and successful program of activities.



Visitors enjoy "Sunday in the Park" at The Doctors' House.  
(Photo by Bill Sheppard)

"Sunday in the Park", organized by docent Karen Cline, drew approximately 500 people for an afternoon of fun and nostalgia on September 11. A vintage car display, open house, entertainment, and sales of merchandise and refreshments proved so popular that we plan to repeat the event next year.

Children in grades three through five participated in a creative writing contest during the months of September, October, and November. Their theme was "What life was like if you were living or visiting at The Doctors' House during the time from 1888 to 1900". Extra school tours were held in conjunction with the contest, whose winners will be awarded prizes at the children's holiday festivities at The Doctors' House the morning of Saturday, December 10.

The Centennial exhibit for November and December is entitled "Victorian Pastimes." We have a select collection of quilts on display, "hand painting" on a brown velvet pillow, and Victorian bead work pillows. The garments and needlework on display vividly demonstrate what turn-of-the-century women were doing in their "free time." Our newly acquired exhibit case features a fascinating collection of 67 hat pins and lovely hat pin holders. The exhibit is an example of the wealth of historic materials owned by Glendalians, just waiting for the opportunity to be displayed.

Since it opened in May, 1984, The Doctors' House has been toured by approximately 18,000 people. A tally has been kept of all visitors, and at the time this newsletter went to press the 18,000th visitor was imminent. The Docent Guild was looking forward to presenting the actual 18,000th person with a special surprise gift: "The Country Basket", full of delicacies to eat and drink.

Congratulations to Mary and the Docent Guild for an autumn full of interesting and enjoyable events!

Suzanne McKay

\* \* \* \* \*

#### TGHS TASK FORCE MEMBERS ATTEND THEATRE SYMPOSIUM

Striving to learn more about saving and renovating historic theatres in order to help them in their work on the Alex Theatre, six TGHS Preservation Action Task Force members attended a symposium sponsored by the Los Angeles Historic Theatre Foundation (LAHTF) on August 12-13. Noted theatre authorities, architects, developers, and experts in various fields related to historic theatre preservation came from around the country for two days of panel discussions held in various theatres in Los Angeles' Historic Theatre District.

The first day of the symposium focused on how theatre restoration can be combined with downtown redevelopment to benefit a community both economically and culturally. One session focused on the growing importance of the Los Angeles area in the world's entertainment industry. Another focused on the importance of incorporating historic theatres into a well-designed entertainment district, and the economic impact of such a district on the community. The second day focused on planning and funding theatre renovation, balancing and managing theatre programming, and maintaining the architectural integrity of a historic theatre.

The symposium was attended by nearly 200 people from all over the country. Most like those of us from TGHS, were preservationists committed to saving and restoring a local historic theatre. The symposium panelists and other registrants all served to make the restoration of the Alex Theatre more of a reality by proving that the Alex Theatre is a viable project, spelling out the challenges ahead, and providing the inspiration to continue.

Andrea Humberger  
Preservation Action Task Force Member

Note: For videotapes of the Los Angeles Theatre Symposium, call the LAHTF office at 213-746-9868.



Dorothy West is the first to enjoy the bench commemorating her late husband Ray, popular restoration volunteer.  
(Photo by Marie Luft)

#### BENCH COMMEMORATES "SPECIAL FRIEND OF THE DOCTORS' HOUSE"

On a hot Labor Day weekend Sunday afternoon, September 4, nearly 40 TGHS members and friends gathered in the comfortable shade on the east side of The Doctors' House for the unveiling of the Ray West Memorial Bench. The event was a moving and joyful tribute to Ray, a much-loved restoration volunteer.

Bill Sheppard began the formal portion of the afternoon with a short expression of appreciation for the work and steadfast efforts which Ray and Dorothy West had contributed to the restoration of the house. Then the group serenaded Dorothy with a charming song composed and led by Wallie Forstall. Dorothy replied with heartfelt words in thanks for the memorial and for the support of co-workers. The Wests' son, Ray Jr., visiting from Florida with his wife Charlotte, added touching comments on the role which The Doctors' House project had played in the lives of his parents. Mary Sheppard then unveiled the bench, an elegant example of the craftsmanship of restorers Bill Sheppard and Glenn Luft. The heavy black cast-iron ends support five-foot long slats of gleaming through-grained pine. Thanks to the ingenuity of Marie Luft and Milton Zabaro, the bench is set firmly in cement. A simple brass plate on the back rest commemorates "Ray West 1903-1986 A Special Friend of The Doctors' House".

Those attending the ceremony, most of whom had worked with Ray as "Saturday volunteers" restoring the house, enjoyed reuniting and reminiscing over refreshments well into the evening.

The Ray West Memorial Bench will not only serve as a permanent reminder of their companion Ray, but will provide a comfortable resting spot for visitors to the house he helped restore.

Dr. Robert M. Newcomb

CHRISTMAS AT THE DOCTORS' HOUSE

"A Victorian Christmas" will be re-created at The Doctors' House throughout the month of December, with authentic period decorations, greenery, and a Christmas tree bringing back to life the holiday season of 100 years ago. Extended hours will enable as many people as possible to enjoy the house, and a special children's morning and family open house afternoon will offer extra delights to visitors. All events are free.

December Sunday hours are 1 pm to 4 pm. The house will be closed Christmas Day but open New Years Day. Docent-guided tours will be given on these Sundays.

On Saturday, December 10 from 10 am to 12 noon, children and their parents are invited to visit the house for the special children's tours, which include hands-on demonstrations in an 1890 kitchen. They'll also get to construct an old-fashioned Christmas decoration. This morning will also be the occasion for presenting the awards for the Doctors' House children's creative writing contest.

During the afternoon of December 10, from 12:30 to 4:30, visitors will enjoy an informal Open House enhanced by music of the season.

We look forward to seeing you and your young family members and friends at The Doctors' House this holiday season, as we share in what is becoming an annual tradition.

Mary Sheppard  
Doctors' House Chairman

\* \* \* \* \*

TGHS AWARDS AND INSTALLATION CEREMONIES

The beautiful grounds of the historic Casa Adobe de San Rafael provided the setting for our annual Awards and Installation Ceremonies held on Sunday afternoon, September 18. This yearly event brings us together to celebrate and honor the achievements of those who made our past year an exciting and fruitful one, and to install the Board and officers who will lead us in the coming year.

The Zelia Blanton Award for Achievement in Historic Preservation was presented to Suzanne McKay. Plaques for outstanding service to the Historical Society were awarded to Almetta Hames, Merry Franzen, Helen Wrede, Bob Woodring, Dr. Robert Newcomb, Larry Meyer, Connie Humberger, Bill and Mary Sheppard, and Christy McAvoy.

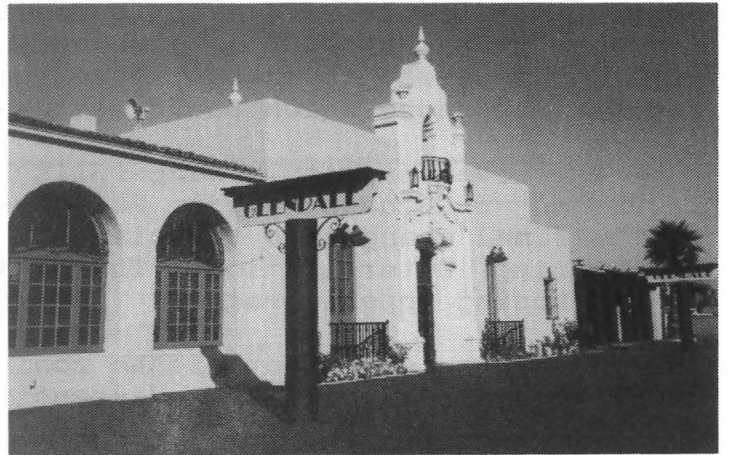
For the first time, we formally honored individuals for their preservation of specific buildings. Bruce Gaughan received an award for his maintenance of the historic character of the 1924 Glendale Amtrak (formerly Southern Pacific) railroad station, and Eileen Davitian received one for the meticulous restoration of her 1902 home at 822 E. Wilson.

Archie Trowbridge, long involved in Glendale civic and community affairs, installed the 1988-1989 Board of Directors. Serving on the Board are David Smith, President; Dr. Robert Newcomb, Vice President; Dick Montgomery, Treasurer; Audrey Hales, Secretary; Jamee Harasick, Historian; Dan Leimeter, Publicity and Public Relations; Mary Sheppard, Doctors' House City-Liaison and Docent Chairman; Margaret Hammond, Tours and Fundraising; and Bob Woodring, Computer Services.



Eileen Davian was honored by TGHS for the fine restoration of her 1902 home at 822 E. Wilson.

## PRESERVATION Successes and Challenge



AMTRAK Ticket Agent Bruce Gaughan received a TGHS award for maintaining the historic character of the 1924 Glendale railroad station.



The E. D. Goode House, 119 N. Cedar, is a potential office for a local developer. (See following article.) (Photo by Suzanne McKay)

## TGHS RESPONDS TO PLANS FOR THE E. D. GOODE HOUSE

The November 2 Glendale Historical Society general meeting provided our membership with the opportunity to view the most current plans of the Broadway-Cedar Partnership for the 1887 E. D. Goode House and its surrounding property. Members had reviewed earlier versions of the plan, entailing conversion of the house to an office and using the remainder of the lot for a large U-shaped senior housing project, at meetings on October 3 and 5. The plans viewed on November 2 had received City zoning variance approvals that same day.

The response among TGHS members was one of great disappointment, as the newest drawings showed a harsher plan than the earlier one. The architectural professionals with whom we have consulted increasingly agree that the current form of the project more seriously impacts the Goode House than available alternative designs. Indeed, we are advised by no less than eight professionals (and our Task Force concurs in its own review) that far more preferable designs are possible. These would continue to meet the important senior housing objectives.

Because the membership was so concerned about the latest plan, they unanimously declared their opposition to it. They formally directed representatives of TGHS to intensify their dialogue with community leaders and decision makers about the serious design weaknesses in the plan, focusing on those which could most easily be corrected or improved.

The November City zoning ruling granted all five types of variances requested by Broadway-Cedar Partnership. There were some surprises, both in the final changes to the plans by the developer and in the specifics of the zoning determination. These will potentially be given consideration in the zoning appeal process.

One surprise aspect of the zoning decision was the approval of the new structure's proposed distancing of 5 to 8 feet from the Goode House --considerably less than the 12-foot code minimum between occupied structures in a residential zone. The zoning decision thus not only allows office use (by the use variance) but prevents future residential use,

Another change to the plans gaining the nod in the zoning decision is that the proposed height of the housing project is to be increased to 41.5 feet. The top floor would cover most of the west side of the Goode House, and the total bulk would be more than 20 times that of the Goode House. Actually, of course, TGHS objections are not precisely with the bulk of the new structure but with the closeness of that bulk to the exquisite 1887 home, its obstruction of some of the most beautiful, familiar, and architecturally meaningful views of it, and its lack of sufficient landscaping in the heart of the project. Such landscaping would be in accordance with the U. S. Secretary of the Interior's Standards and would provide a more natural and flattering context for the Queen Anne-Eastlake style home.

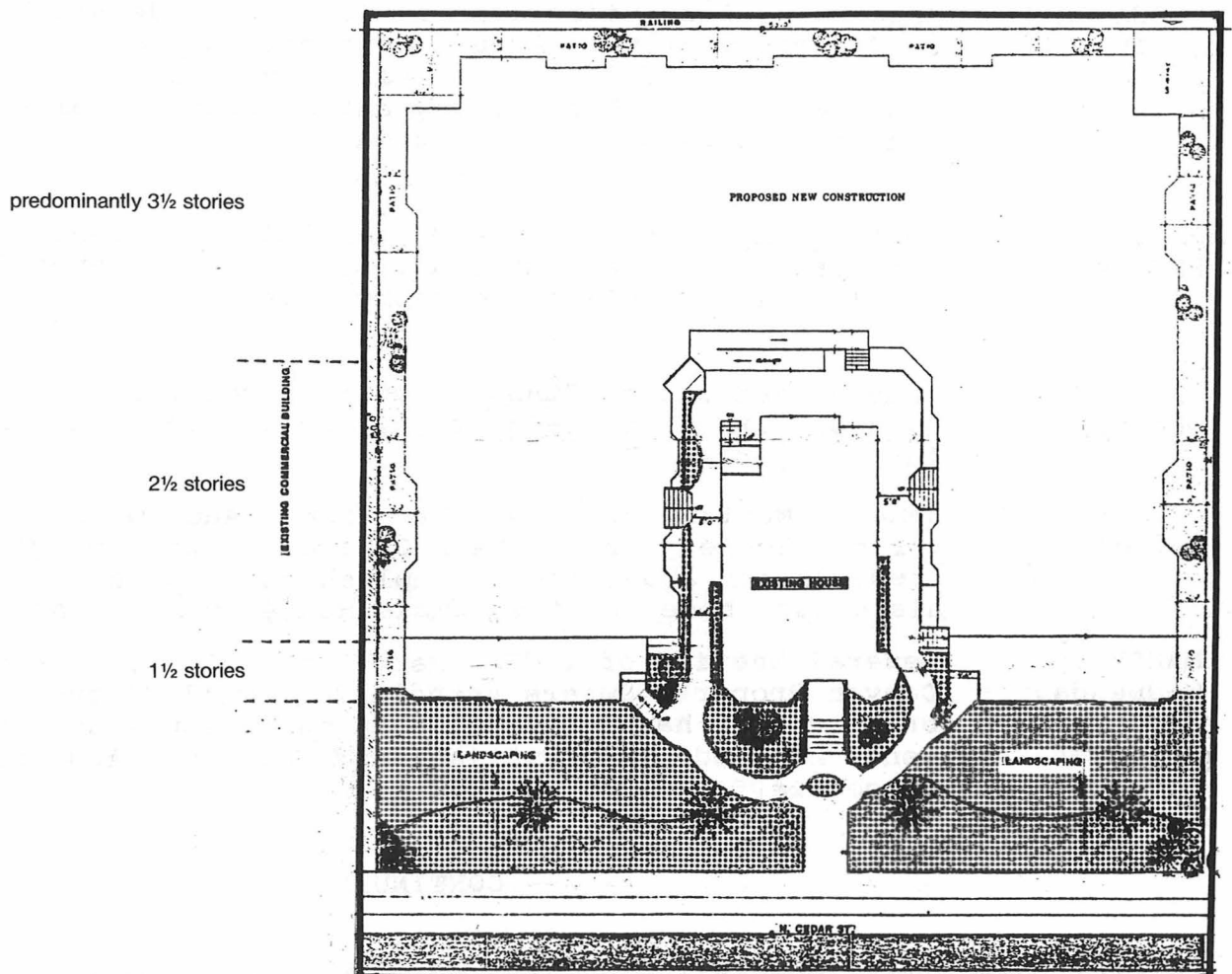
The closeness of the new building to the old can be seen in the fact that the proposed sidewalk corridors separating the new "U" structure from the Goode House are on average only 7 to 8 feet wide. This would severely limit the amount of daylight reaching the corridors and the sides of the house. The roof overhangs encroach even further into the narrow aisles.

The plantable dirt area at ground level in the corridor is reduced to two 24-inch strips running less than half way around the Goode House, plus two beds along the northern base of the south wing of the new structure. (See shaded areas inside "U" on diagram.) Thus, much of the project center area would be cement running from the edge of the Goode House to the edges of the new building.

We hope that the use of the zoning appeal process will provide the opportunity for additional design attention to the plan, and that productive dialogue will lead to solutions which make this project one which will ultimately be a source of pride rather than embarrassment for all concerned.

It is one of the aims of The Glendale Historical Society and its Preservation Action Task Force to provide encouragement and assistance to both private and public preservation projects. Our attention to quality and detail are based on our affection for, and pride in, our city's historic treasures. Ideally, we can succeed in creative, productive partnership with the City (recognizing its legitimate development concerns) and private developers. We can thereby help to maintain Glendale's own special identity through conservation of our unique, shared cultural heritage.

Sue Lazara  
TGHS Preservation Action Task Force



Plan submitted November 2 by Joe Ayvazi, approved by Zoning Administrator. Areas shaded are plantable dirt at ground level. Perimeter patios are atop semi-subterranean garage, 4 1/2 feet above ground level.

THE GLENDALE HISTORICAL SOCIETY

Calendar of Events for Winter 1988-1989

- DECEMBER  
Sundays "A Victorian Christmas" at The Doctors' House. Free docent-guided tours through the decorated house. Open extended hours, 1 pm - 4 pm. (Closed Christmas Day).
- DECEMBER 10  
Saturday Morning: Children's Christmas at The Doctors' House. Children are invited to tour the decorated house, experience activities in an 1890 kitchen, and make their own ornaments to take home. The creative writing contest winners will receive their awards. 10 am - 12 noon. Free.
- Afternoon: Open house and holiday music. 12:30 pm - 4:30 pm.
- DECEMBER 11  
Sunday The Glendale Historical Society Yuletide party. Join us for our annual holiday festivities. Details are on the invitations mailed to members.
- DECEMBER 16-  
18  
Friday -  
Sunday "Fiesta de Las Luminarias" at Casa Adobe de San Rafael, 1330 Dorothy Drive. Annual celebration presented by Glendale Beautiful, in the festive Hispanic tradition. Hours are 6 pm - 9 pm Friday and Saturday, 2 pm - 5 pm (children's pinata party) Sunday. Free.
- JANUARY,  
FEBRUARY Photography exhibit at The Doctors' House. Contemporary impressions of the home and its details, as photographed by Glendale College photography class.
- JANUARY 4  
Wednesday General Meeting of TGHS. Committee reports and discussion of our current education, publication, and preservation projects.
- FEBRUARY 1  
Wednesday General Meeting of TGHS. Dr. Thomas Andrews of the Historical Society of Southern California will be giving a presentation about the accomplishments and activities of his group, based at the Lummis House in Highland Park.
- MARCH 1  
Wednesday General Meeting of TGHS. Mary Ann Prelock, from Royal Canyon Property Owners Association, will discuss how her organization has been active in such issues as development, hillside preservation, and the Civic Auditorium proposals.
- Sundays The Doctors' House, Brand Park, 1601 W. Mountain. Open free to the public from 2 pm to 4 pm. Docent-guided tours of the restored Queen Anne-Eastlake style home. (December hours: 1 pm - 4 pm, closed Christmas Day).

-- CONTINUING --



RUTH DODSON NAMED 1988 "WOMAN OF ACHIEVEMENT"

Ruth Dodson, long-time member of The Glendale Historical Society, was recently named the 1988 "Woman of Achievement" by the Glendale News Press. For 23 years the News Press has bestowed this honor on local women for their outstanding contributions to our community.

We are pleased and proud -- but not surprised -- that Ruth should have been so recognized. She was one of the earliest members of our organization, and gave generously of her time and talents toward the restoration, furnishing, and care of The Doctors' House. She was instrumental in the formation of the City of Glendale's 1985 Historic Preservation Ordinance, which provided for the creation of the Historic Preservation Commission. She has long been involved with the Casa Adobe de San Rafael through her work in Glendale Beautiful.

Our warmest congratulations to Ruth!

\* \* \* \* \*

MEMBERSHIP RENEWAL

Membership cards for the period July 1, 1988 - June 30, 1989 have now been mailed to all new and renewing members. If you did not receive your renewal notice or your card, please contact TGHS at 242-7447. Please notify us of any change of address, because our bulk mailing postage rate does not provide for forwarding mail.

Welcome back to all renewing members, and special thanks to our Corporate and Sustaining members for their generosity and support. Sustaining and Corporate members for 1988-1989 are the following:

- Michael and Carole Dougherty
- Harry W. Gorst
- John W. Knight Insurance Company
- Dan and Barbara Leimeter
- Ronald M. Morris
- Mr. and Mrs. Don Penniall
- Mr. and Mrs. Don Platz
- James and Carole Weling

\* \* \* \* \*

MATCHING GIFTS WELCOMED

As a non-profit organization, The Glendale Historical Society qualifies for the "Matching Gift" programs of many companies. As our opportunities for community involvement expand, so must the financial resources which help us carry out our projects. The cost of buying research materials, producing reports and publications, and paying for such mundane but essential items as photocopying, postage and insurance is a necessary factor in achieving our goals. We are most appreciative of any donations, and are especially pleased when a gift is matched by a community-minded employer.

\* \* \* \* \*

Newsletter Editor: Suzanne McKay      Assistant Editor: Dr. Robert Newcomb

Thanks to Helen Wrede for typing the newsletter, and to Bob Woodring, Karen Newcomb and Daphne Lindstrum for their help in the bulk mailing.

MEMBERSHIP

Welcome to new members William Shepherd, Catherine Zermeno, Laura Ohlund; and Stephen L. Meek, Charmay Allred, Anthony Castanada, and R. Bruce Yeager.

Membership in the Glendale Historical Society is open to all persons interested in learning about, promoting, and preserving aspects of Glendale's history. Members receive quarterly newsletters, announcements of events, discounts on TGHS tours, and the opportunity to work on a variety of projects. Annual dues are \$15 for single active, \$25 for family active, \$50 for sustaining, \$5 for student/senior, \$25 for non-profit organization, and \$100 for corporate.

General meetings are held monthly (except December, July and August) at 7:30 p.m. on the first Wednesday of the month, in the Carrillon Room, Glendale Federal Savings, 401 North Brand Boulevard. Telephone: 242-7447

NAME \_\_\_\_\_

ADDRESS \_\_\_\_\_ ZIP \_\_\_\_\_

PHONE \_\_\_\_\_ ( ) New Member ( ) Renewing Member

I would like to assist in the following area(s):

EDUCATION  
RESEARCH  
CLERICAL

PRESERVATION ACTION  
PROGRAM DEVELOPMENT  
NEWSLETTER

MEMBERSHIP  
WAYS AND MEANS  
DOCENT GUILD

OTHER \_\_\_\_\_

The Glendale Historical Society  
P. O. Box 4173  
Glendale, California 91202

Non-Profit Org.  
U.S. Postage  
PAID  
Glendale, Calif.  
Permit No. 1183