



The Glendale Historical Society

VOL. 12, NO. 2, 1991

CITY TAKES STEPS TO PRESERVE THE ALEX



The broad, shady forecourt of the Alex beckons patrons into the world of the theatre.

In the past few months the City of Glendale has continued to take important steps which have brought the Alex Theatre even closer to preservation and rehabilitation.

As reported in our last newsletter, the City formed The Committee for Arts at the Alex (CAA), a 21-member community-based advisory committee charged with developing a plan to preserve and rehabilitate the Alex Theatre as a performing arts center. During the first three months of meetings, CAA divided itself into five subcommittees: Fundraising, Theatre Programming, Theatre Evaluation, Master Plan and Management and Operation. Subcommittees meet to conduct business on their specific topics and report back to CAA at the regular monthly meeting. CAA has set up an educational hour before every CAA meeting where pertinent issues are presented by experts in various related fields.

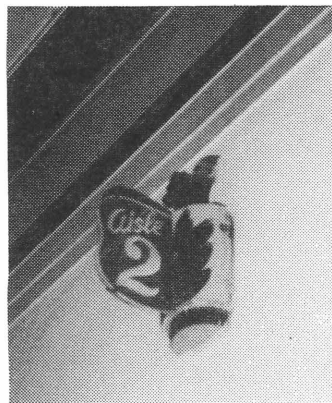
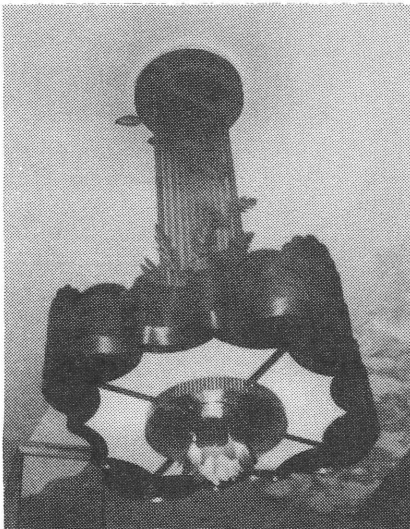
(continued)

Under the leadership of CAA Chair Laurence R. Clarke, the committee defined a realistic project scope for the rehabilitation of the Alex and was ready to retain an architect by the end of April. On April 25, Mr. Clarke presented CAA's recommendations to the Glendale Redevelopment Agency stating that our plan will "make the Alex a fine theater, the first-class jewel it was meant to be." The plan focuses on rehabilitating the historic theatre, making some modifications to increase its viability, and limiting the project budget to under \$10 million. CAA believes this proposal to be the most economically feasible and the most responsive to the needs and wishes of the community. The Glendale Redevelopment Agency unanimously authorized CAA to proceed with its plan and to retain an architectural team to begin concept development for the rehabilitation of the Alex.

As part of the City's ongoing efforts to acquire and rehabilitate the Alex, the Redevelopment Agency has been negotiating with the Church of Christ Scientist, owners of the forecourt area from Brand Boulevard to the theater's entrance. On May 14, the Agency unanimously approved the acquisition of the property from the church, another key step in the process of preserving and rehabilitating the theatre.

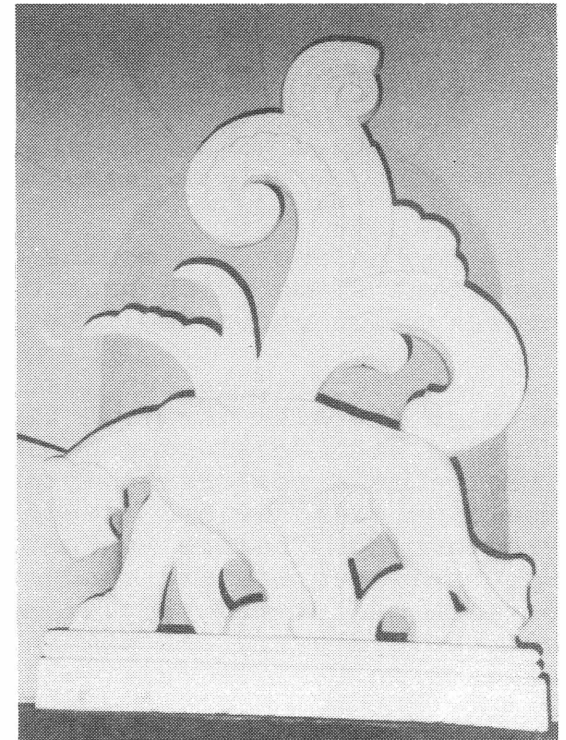
TGHS commends the Glendale Redevelopment Agency and its staff for its commitment and ongoing efforts to preserve the landmark Alex Theatre.

Andrea Humberger



The clean-lined elegance of the Alex Theatre is expressed in ceiling and above-door light fixtures, the sweeping entrance to the forecourt, and the stylized figure of a tiger and foliage. This type of figure was a trademark of 1940s Fox Theatre chain artist Charles P. Skouras.

(Alex Photos by S. McKay)



PRESERVATION OF ALEX THEATRE ATTRACTS WIDESPREAD SUPPORT

The preservation and rehabilitation of the Alex Theatre continues to receive widespread support from individuals and organizations nationwide. In addition, TGHS continues to receive coverage and support for its ongoing role in the preservation of the theater.

The Los Angeles Historic Theatre Foundation has provided support from the outset of the TGHS effort. The foundation, established in 1987 to promote the rehabilitation and reuse of valuable and architecturally irreplaceable historic theatres in Southern California, works through education, programs, study and assistance to local groups. It has lent support and assistance to the Alex preservation efforts by publicizing it in its newsletter over the years, assisting with the 1988 TGHS study "Preservation of the Alex Theatre", providing photographs and articles for the Alex Extravaganza souvenir program, and most recently by presenting educational sessions for the Committee for Arts at the Alex. At the Committee's April meeting, John Miller, Los Angeles Historic Theatre Foundation President and Co-founder, presented a slide presentation on restored theaters nationwide, pointing out the valuable lessons and pitfalls of each project. On April 29, Hillsman Wright, also a Co-founder, served as facilitator and speaker at a panel discussion on Theatre Programming held by the Committee for Arts at the Alex.

Many thanks to the Los Angeles Historic Theatre Foundation, John Miller, and Hillsman Wright for their invaluable support and assistance to both The Glendale Historical Society and the Committee for Arts at the Alex, in their ongoing efforts to preserve and rehabilitate the Alex Theatre as a performing arts center for Glendale.

TGHS ELECTS BOARD OF DIRECTORS

At our June General Membership meeting David Smith, Merry Franzen, and Dan Cabrera were elected to three-year terms on the TGHS Board of Directors. David and Merry are continuing Directors, and Dan is filling the position of retiring Director Dan Leimeter. The Officers for 1991-1992 will be chosen by the Board this summer and will be installed at our September installation ceremonies to begin the new activities year in the fall. The other continuing Directors are Andrea Humberger, Sue Lazara, Bill Shepherd, Dick Montgomery, Margaret Hammond, and Doyle Kutch.

New Director Dan Cabrera and his wife Judy became Glendale Historical Society members in 1982 when they received a gift membership from Judy's sister. Judy soon became a Doctors' House docent, but Dan's involvement did not intensify until several years later when he became intrigued with the work of the TGHS Preservation Action Task Force. He decided that this was a good way to become involved in his community, joined the Task Force, and began representing TGHS at City Commission meetings on the Public Service Building. His commitment and expertise extend to other facets of our organization, as well. As a Director he would like to work toward broadening the scope of our activities to extend beyond the preservation of buildings, to include other aspects of Glendale's history.

Dan brings to the Board a background in business, being the owner of two microwave oven stores. He also teaches microwave cooking. A warm welcome to our versatile new Board member!

We thank Dan Leimeter for his faithful years of service as a Director. His work and wit have been much appreciated. Our thanks and best wishes also to our continuing Directors for all the spirit and energy they devote to our organization.

PRESIDENT'S REPORT: THE YEAR IN REVIEW

It has been a great year for The Glendale Historical Society -- a year of dynamic projects, increased visibility, and growth.

The biggest single event of the year was the tremendously successful Alex Extravaganza, which helped push the Alex Theatre closer to preservation and rehabilitation. We also launched several new projects, including "Designation 1990's" and opening receptions for the changing displays at The Doctors' House. These have been very well supported.

Local press coverage of TGHS events and historic preservation issues has been outstanding, and has brought increased awareness to important community heritage issues. In addition, widespread coverage and support in newsletters of regional, statewide and national preservation organizations has boosted awareness of the Alex nationwide. To top off the year, a seven-page spread of color photographs and text on The Doctors' House in the spring issue of Victorian Homes magazine brought national attention to Glendale and The Doctors' House!

It has been a successful year for publications. We sponsored the printing of the second edition of Glendale: A Pictorial History, produced a comprehensive guide to Glendale's landmark nomination and designation process, had an article co-authored by TGHS members published in Business Life, and two editorials printed in the Glendale News-Press. The News-Press also printed the TGHS map of Historic Sites in Glendale in their special history section in honor of Glendale's 85th birthday. In addition, the Alex Theatre Revitalization Project, a TGHS committee, produced a souvenir program celebrating the theater's impressive 65-year history and reprinted Preservation of the Alex Theatre, the 1988 TGHS position paper.

It has been a year of active civic involvement and service. We were an exhibitor in the Chamber of Commerce annual Expo trade show and the Days of the Verdugos Fair, and a sponsor of the Chamber's "Celebration of Culture and Heritage". Our organization also participated in Glendale Beautiful's annual Christmas celebration at the Casa Adobe, the Altrusa Club's volunteer fair, and the Arbor Day program co-sponsored by the City and Glendale Beautiful. In addition, two TGHS representatives currently serve on the City's Committee for Arts at the Alex in an ongoing commitment of service to the Glendale Redevelopment Agency's project to preserve, rehabilitate and re-use the landmark Alex Theatre.

It has also been a year of firsts. We produced our first membership brochure, sponsored our first forum for City Council candidates, and co-sponsored our first workshop on the nomination and designation process for local landmarks with the Los Angeles Conservancy and the City of Glendale. TGHS received donations of a computer and printer -- real firsts for the TGHS publications committee!

It has been a landmark year. The Glendale Historical Society celebrated the completion of its first decade.

And, finally, it has been a year of growth. We have increased our ranks, with approximately 130 new memberships in the past year bringing our total number of members to approximately 400!

I thank the Board of Directors, The Doctors' House Docent Guild, and all volunteers for their service and support which contributed to the successful year's activities. This year as President has been an enjoyable and rewarding one for me, and I thank the members for the opportunity to serve the Glendale Historical Society as President over the past year.

Andrea Humberger

DINNER PARTY HONORS DOCTORS HOUSE DOCENTS

The Glendale Historical Society Board of Directors recently held a dinner party to welcome and introduce new Doctors' House docents and to honor the continuing docents for the time and dedication they have invested in this year's tours and special events at the historic Glendale home.

The party was held May 16 at Sue Lazara's home. She treated the docents to before-dinner drinks, a delicious dinner of baked ham and hominy grits (a reflection of her Texas background) and a dessert of frozen yogurt cake topped with a warm brandied cherry sauce. At various tables throughout her lovely home, docents and board members enjoyed the gracious surroundings, excellent food and interesting conversations.

After dinner TGHS President Andrea Humberger reviewed the board's efforts in the past year to promote local and regional awareness of The Doctors' House. Terry Richman presented "A Woman's World", the slide show she had created for the opening of the March-April Doctors' House exhibit depicting on the times and activities of a typical middle-class Victorian woman.

A special thank you goes to Sue for the enjoyable evening. Nothing could have better shown the board's appreciation of the new and continuing docents, than the hard work and considerable skill she put into making the dinner such a success.

Terry Richman

* * * * *

GLENDALIANS ATTEND STATEWIDE PRESERVATION CONFERENCE

Several Glendale Historical Society members made a productive trip to Santa Barbara for the 16th annual California Preservation Conference held May 9 - 12. The sessions covered a wide range of topics including basic preservation, legal issues, housing, tax incentives, tourism and marketing, seismic retrofit, and technical solutions for historic preservation projects. Several beautiful historic structures were used for the meeting rooms, adding to the pleasure of the experience.

The conference was also attended by representatives of the City of Glendale, including Planning Director John McKenna and Historic Preservation Commissioners Vonnie Rossman, Marlene Roth, Georgia Abelman and Sue Howard. Sue Lazara, Andrea Humberger, and Dan and Judy Cabrera represented The Glendale Historical Society. Christy Johnson McAvoy chaired the entire conference in her capacity as President of the California Preservation Foundation. Our thanks go to her and to David Shelton and Alex Cole, co-chairs of the Conference Planning Committee, for an outstanding weekend.

Judy Cabrera

* * * * *

NEW MERCHANDISE LIST

In this newsletter you will find our up-to-date merchandise list and an order form. The prices listed include postage and handling. Therefore, all prices are slightly less when an item is purchased in person at The Doctors' House (regular hours: Sunday afternoons 2 pm - 4 pm) or at public events where TGHS has a booth.

WELCOME TO NEW PLANNERS

Glendale's Planning Division recently hired two planners to fill the newly created Historic Preservation Planning position and the Advanced Planning vacancy. We are pleased to introduce the new planners to TGHS members.

Gerald Wasser, the new Historic Preservation Planner, was born in Glendale and grew up in Los Angeles. He holds a BA and MA in Geography from the University of New Mexico and an MS in Environmental Studies from Cal State Dominguez Hills. He also graduated from the Coro Foundation's Public Affairs Program. Gerald worked in Urban Planning for the Los Angeles County Regional Planning Department for over 16 years where his experience included community relations, long range planning, current planning, ordinance preparation, and environmental review. He left the county agency to work in the private sector.

After several years working for the building industry and a private land use consulting firm, Gerald decided to return to public service. When he applied to Glendale's Planning Division, he expressed a preference for the Historic Preservation position. He had become interested in preservation issues during work on a project involving the Hollyhock House in his Coro training.

As the Historic Preservation Planner, Gerald provides support to the Historic Preservation Commission and serves as liaison between the Commission and the public. He will also work on special projects, including revision of Glendale's Historic Element, historic resources surveys, videos, and oral histories.



Gerald Wasser, Historic Preservation Planner.
(Photo by A. Humberger)



Diane Williams, Advanced Planner.
(Photo by A. Humberger)

Diane Williams is the new Advanced Planner. Diane has an MA in Architecture and Urban Planning from UCLA. As a historic preservation consultant for her own firm in the past seven years, she wrote national register nominations, prepared historic structures reports, and conducted historic resources surveys. As a contract employee for Los Angeles County, Diane developed the County's guidelines for complying with Section 106, a Federal environmental review process. She currently serves on the City of Pasadena's Cultural Heritage Commission and as Vice President of the Southern California Chapter of the Society of Architectural Historians.

(continued)

She recently completed her second term on the Pasadena Heritage Board of Directors.

As an Advanced Planner, Diane does long range planning. Over time, her work may positively impact historic preservation as well as other important environmental issues in Glendale.

Though she has a strong background in preservation, Diane, like Gerald, chose the planning position outside her area of expertise. Both say they were looking for new challenges. TGHS welcomes both Gerald and Diane and looks forward to working with them on current and long range historic preservation issues.

Andrea Humberger

* * * * *

PRESERVATION ISSUES UPDATES

Design Review Ordinance: On April 2, City Council approved the "Anti-mansionization" ordinance which establishes guidelines and requires approval by the City's Design Review Board for the construction of new single family houses and additions to existing homes. TGHS supports the new ordinance as an appropriate tool to help preserve the integrity of single family neighborhoods and the overall quality of life in Glendale. TGHS commends City Council for adopting the new ordinance and congratulates the Planning Division, Planning Commission, Northwest Glendale Homeowners Association, and others whose fine work and combined efforts shaped the ordinance.

Goode House: On April 9 City Council voted to keep the E.D. Goode House on its original site on Cedar Street, rejecting a proposal to relocate the landmark to Brand Park. Councilman Raggio stated his belief that the house could provide "a source of entertainment and pride" if restored as a recreation center for the senior housing project under consideration for the property. Councilman Raggio's stand and Council's decision are consistent with our organization's preference for leaving historic buildings on their original sites.

Public Service Building: As previously reported, Glendale's Environmental and Planning Board voted in November 1990 for the preparation of an Environmental Impact Report (EIR) on the proposed demolition of the Public Service Building. In early March, the Planning Division sent out a Request for Proposals to three consulting firms. The City has recently selected Cotton/Beland/Associates to prepare the EIR and finalized the contract with them during the first week of June. The firm has chosen a team consisting of P.Patrick Mann, Principal-in-Charge of the project, Paula Kelly, Project Manager, and Ray Pendro, Environmental Analyst, all from Cotton/Beland. Members of the team from other firms are Martin Weil, Restoration Architect; Weston Pringle and Associates, Traffic/Circulation/Parking; Robert Charles Lesser and Company, Fiscal; Sindik/Olson Associates, Space Planning; and Kariotis & Associates, Structural Engineers. The team will hold a public hearing the evening of July 18 in Room 105 of the Municipal Services Building, when the public will have the opportunity to help define the scope of the EIR. TGHS encourages all interested citizens and members to attend the session and express their concerns regarding the proposed demolition of the Public Service Building.

Andrea Humberger

Spotlight on Service



By Andrea Humberger

Merry Franzen has been an active volunteer for The Glendale Historical Society since the mid-1980s. Merry was born and raised in Hollywood. She attended the Westlake School for Girls until her senior year, which she completed at Fairfax High. She attended Los Angeles City College briefly before marrying Dan Franzen (also a TGHS member and active Doctors' House volunteer). While their two daughters were small, Merry went back to college, completing her degree and teaching credential at San Fernando Valley State College, with a major in English and a minor in Drama. In the drama program Merry had the opportunity to pursue her interest in costumes and period clothing by working in the costume department. Merry taught English, American Literature, and Composition at Roosevelt High School for 19 years.

Pursuing her longstanding interest in history, Merry became a docent at Heritage Square while still teaching. Upon her retirement in the early 1980s, she volunteered in the costume and textile department at the Los Angeles County Museum of Art and became a Doctors' House docent. She enjoyed the "hands on" nature of the work at the Doctors' House where she soon began to devote the majority her volunteer time. With Mary Sheppard, Merry created the new and changing Doctors' House exhibits, including Victorian Wedding, Vintage Bathing Suits, and "Lady Bares All".

Merry became Docent Coordinator in January of 1990. Since that time she has staffed the regular Sunday shifts and special tours at the Doctors' House, created the changing exhibits, organized the opening receptions for the displays, written the press releases for Doctors' House events, produced the Docent newsletter, and reported on Doctors' House activities for the TGHS newsletter. In September 1990, Merry became a member of the TGHS Board of Directors as the Doctors' House representative.

Last fall Merry served as assistant to the wardrobe woman for the Alex Extravaganza, once again using her background and interest in both history and costumes. In addition to all her work for TGHS, Merry continues to volunteer at Heritage Square and the Los Angeles Conservancy. She and Dan also find time to travel to San Francisco and Colorado quite often to visit their daughters and grandchildren. And in her free time, Merry is putting the finishing touches on a historical novel!

TGHS is fortunate to have Merry Franzen, a person of varied interests and talents, as an active volunteer both on the Board of Directors and at the Doctors' House.



The Glendale Historical Society

MAIL ORDER MERCHANDISE LIST

BOOKS

GLENDALE: A PICTORIAL HISTORY

Published in October 1990, this book traces the history of Glendale from the arrival of Jose Maria Verdugo in 1784 to the present. Incorporating the 1984 edition, this updated volume includes a full color chapter on Glendale in the 1980s. By E. Caswell Perry, Shirley Berger and Terri E. Jonisch. Deluxe edition: 8 1/2" x 11 Hardcover -- Color Dust Jacket -- 260 Pages --350 Photographs. Price \$22.50 to members of The Glendale Historical Society (limit 2 copies); \$32.50 to non-members.

GLENDALE AREA HISTORY

Published in 1981, this book covers the history of Glendale from the Spanish era to 1981. Special emphasis given to civic organizations, business and local government that have contributed to Glendale's development. By E. Caswell Perry and Carroll W. Parcher. Deluxe Edition. 222 pages. Price \$12.50.

THE GLENDALE HISTORICAL COOK BOOK

Culinary approach to Glendale's history, containing recipes, illustrations and stories about the meals of our homes and restaurants from Indian times onward. By Audrey Hales (1981). 81 pages. Price \$6.50.

THE EARLY GLENDALE FUN BOOK

A children's coloring book featuring the Doctors' House with historical facts, a crossword puzzle, maze, and riddles. By Audrey Hales, K. Cline, and K. Lynn (1987). 32 pages. Price \$3.00.

HOW TO RESEARCH BUILDINGS IN GLENDALE

A research manual prepared by TGHS and Heumann & Gleye. Price \$4.00.

TOUR GUIDES AND MAPS

HISTORIC SITES IN GLENDALE

A 17" by 22" illustrated map providing the location and descriptions of 41 historically and architecturally significant sites in Glendale. Published in 1989 by The Glendale Historical Society with assistance from Glendale Federal Bank. Price \$3.00.

FROM STONE CASTLES TO COTTAGES

A tour of the unique stone architecture north of the green Verdugo Hills. Map and illustrations. Price \$4.50.

A BRIEF HISTORY OF THE CASA ADOBE DE SAN RAFAEL

The illustrated history of Glendale's Tomas Sanchez Adobe, built c. 1871. By J. Marshall (Don Diego Miller), supervisor of the 1934-35 restoration of the adobe. 14 Pages. Price \$4.00.

DOCTORS' HOUSE ACCESSORIES

T-SHIRT

T-shirt with Doctors' House design, small on front and large on back. Available in blue and yellow. Sizes S,M,L,XL. Color and size subject to availability. Price \$10.00.

DOCTORS' HOUSE POSTCARD

4" x 6" postcard with beautiful color photograph of the Doctors' House. Price \$.50.

DOCTORS' HOUSE NOTECARDS WITH ENVELOPES

4 1/2" by 6" notes featuring a sketch of the Doctors' House. Packet of four cards and envelopes. Price \$1.50.

DOCTORS' HOUSE POSTER

Commemorates Doctors' House centennial. Black and white exterior photograph 18" by 24". Price \$5.00.

ALEX THEATRE

ALEX EXTRAVAGANZA SOUVENIR PROGRAM

Published in September 1990 for live performance of "Alexander Then and Now," this deluxe program celebrates the star-studded decades of the Alex Theatre with historical information and photographs. Beautifully decorated with graphics from the theater's original 1925 opening night dedication. Proceeds from program sales go toward the Alex Theatre Revitalization Project. Price \$6.50.

PRESERVATION OF THE ALEX THEATRE

TGHS position paper advocating the preservation and rehabilitation of the Alex Theatre. Published in 1988 and reprinted in 1991. Price \$15.00.

ORDER FORM

ITEMS	QTY	PRICE	TOTAL
Total			

Name _____ Telephone _____

Address _____

City _____ State _____ Zip _____

Make your check to: The Glendale Historical Society
 P.O. Box 4173
 Glendale, CA 91202

All prices include local shipping and handling. All items may also be purchased at the Doctors' House or at TGHS events. For further information, call (818) 242-7447.

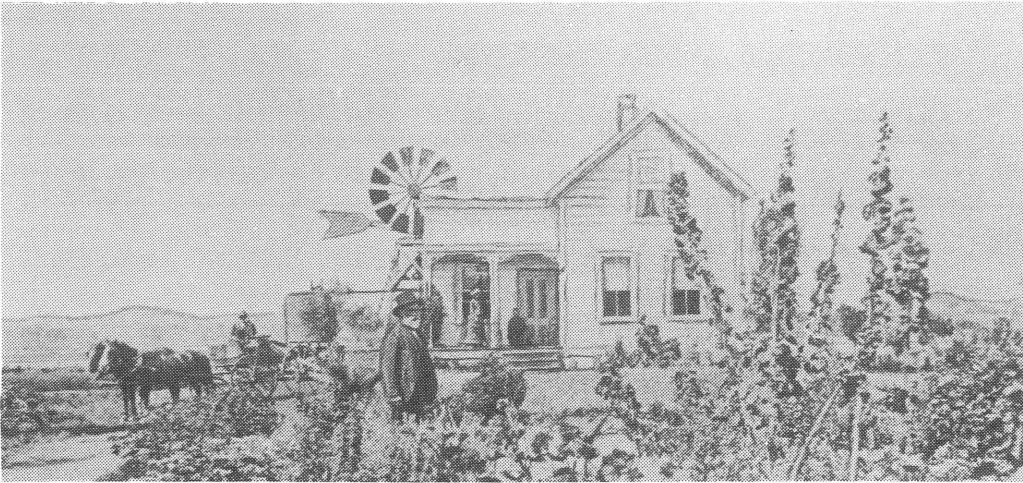
THE GLENDALE HISTORICAL SOCIETY

Calendar of Events for Summer 1991

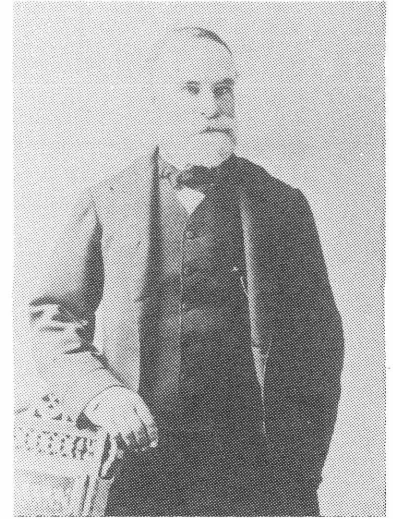
- JUNE 15
Saturday
TGHS 1990-1991 Awards Presentation and Festivities, honoring service, commitment, and contributions to the celebration and preservation of Glendale's heritage. 2 pm - 5 pm at the home of Dick Montgomery.
- JULY 13
Saturday
"Moonlight Over the Arroyo". Evening walking tour of Pasadena's Prospect neighborhood, a National Register Historic District. Entertainment, no-host refreshments, and several open homes. 5 pm - 10 pm. Presented by Pasadena Heritage. Cost \$20 (\$15 for Pasadena Heritage members). For further information telephone (818)793-0617.
- JULY 20
Saturday
"Saturday Night at the Movies". Sixth annual free summer pops concert by the Glendale Symphony Orchestra. Glendale High School Stadium, 8 pm. (Gates open at 6 pm). Picnic on the grass or in the stands while enjoying music from the movies and Tchaikovsky's "1812 Overture".
- JULY 24
Wednesday
TGHS Summer Social and Pizza fundraiser. Round Table Pizza, 330 N. Brand. 5:30 pm - 8 pm. We've reserved the back room for our members, their families and guests. Come join the fun! Round Table will donate 25% of the amount of our purchases to TGHS. Enter the parking lot from Doran.
- AUGUST 18
Sunday
Walking tour of West Hollywood, showcasing the elegant living styles of the 1920's and 1930's in the Sunset Boulevard/Harper/Fountain Avenue neighborhood including the St. James's Club (Sunset Towers). 1 pm - 5 pm. Presented by the Los Angeles Conservancy. Tickets \$18 (\$15 for L.A. Conservancy members). For reservations telephone (213)623-CITY.
- SEPTEMBER
TGHS Installation of Officers and Docent recognition. Members will receive invitations in the mail.
- OCTOBER
16-20
Wednesday -
Sunday
"When Past Meets Future", National Trust for Historic Preservation 45th national conference in San Francisco. Workshops, talks, special events and tours on historic preservation topics relevant nationwide. For further information or to join TGHS members attending, telephone (818)242-7447.

-----Continuing-----

- SUNDAYS
The Doctors' House, Brand Park. 1601 W. Mountain. Open free to the public from 2 pm to 4 m. Docent-guided tours of the restored Queen Anne-Eastlake style home. (Last tour begins at 3:40.)



W.C.B. Richardson and his home, 1885. (Artist's rendering and photograph from the collection of Ellen Perry.)



W. C. B. RICHARDSON: A GLENDALE PIONEER AND HIS LEGACY

(Editor's Note: Thanks to special guest contributor Ellen Perry for this article on Mr. Richardson. The Richardson House, 1281 Mariposa, is one of Glendale's oldest and most important historic landmarks and is currently for sale.)

The name of William C. Belding Richardson is now found only in history books on Glendale. But this wasn't always so. At one time the name Richardson was so prominent that this pioneer was named the First Citizen of Tropic, the small incorporated city at Glendale's doorstep and now the southern section of Glendale. Richardson lived on his Santa Eulalia Ranch there until his death at the age of 94, July 7, 1908. Although he owned his property for more than 40 years, little is known of Richardson's early days in the area. Only those who travel the pathways of Glendale's history are aware of his accomplishments and know that a Southern Pacific Railroad depot, a tile factory and a school exist because of his generosity and concern for his community.

Richardson was born in Swanzey, New Hampshire, in October 1815. He moved with his parents, Elkanah and Sophia, to Ohio where he received his education. From his father he learned the surveying profession and for the next 40 years made that his career. As a prominent citizen of the area, he served two terms as a member of the Cleveland Council. In 1838 he married Sarah Everett in Akron. They had three sons: Omar, Elkanah and Burt.

Richardson's brother migrated to California in 1849, sending back glowing accounts of our state. In the spring of 1861, Richardson traveled to the West Coast. He joined his brother and on horseback the two rode the length of the state. Looking for an area in which to settle, Richardson came to a sparsely settled area in Southern California, and in 1868 --when land was selling for 50 cents to \$5 an acre-- he bought 671 acres of land from Samuel M. Heath adjacent to the Los Angeles River in what is today Glendale. He named it the Santa Eulalia Ranch. Richardson returned to Ohio to attend to his many interests and placed the running of his ranch in the hands of his son Elkanah. Richardson did not return to California until 1880.

The Richardson home, still standing at the corner of Cypress and Mariposa, was built sometime during this period. The exact date has not been confirmed, but historians believe it to be about 1873. The original site of the home was near the southeastern terminus of today's Brand Boulevard, in the Atwater tract. The Santa Eulalia Ranch was stocked with several thousand head of sheep; but when Richardson returned to the area in 1880, the sheep were sold and a dairy was established.

Ella Weekly, an orphan who had been raised in Los Angeles, came to live on the ranch. In 1887 she married Elkanah. They had two sons, Paul and John, still living in California. John Richardson prides himself in his collection of Richardson memorabilia, which includes the original deed of the land.

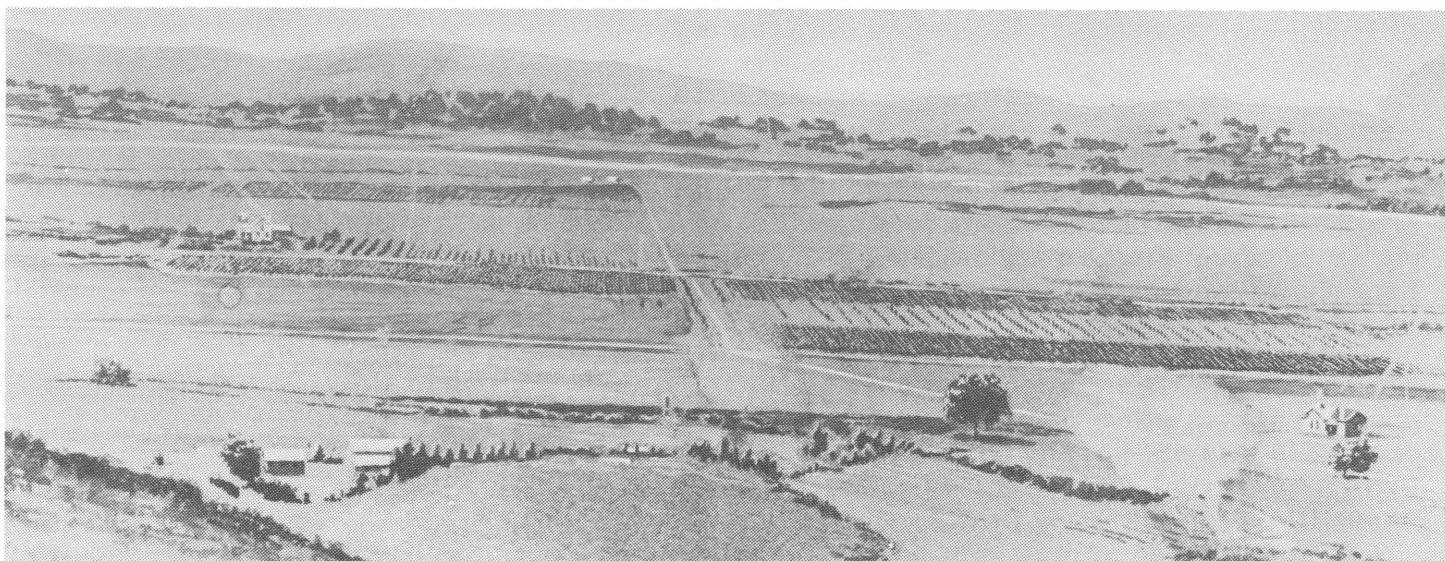
Fruit trees were planted on the ranch, and in 1903 Richardson sold 500 of his original acreage to Japanese farmers to grow strawberries. The next year, the Tropic-Glendale Strawberry Growers Association was organized with Wilmont Parcher, the first mayor of Glendale and father of today's still-active prominent citizen Carroll Parcher, serving as president.

Working side by side, W. C. B. Richardson and his son continued their dairy business. In 1872, while Richardson was still in the east, he had arranged through his son to donate 16 acres of his property to the Southern Pacific Railroad. His only stipulation was that the train would stop in the area to take on or let off his visitors from Los Angeles. This track was built. In 1901, when Professor Joseph Kirkham wanted to build his Pacific Tile art tile factory along the railroad line, Richardson deeded property for the plant. This plant was about two blocks north of Los Feliz Boulevard. Richardson also donated land for the Tropic Presbyterian Church and a school building for the Sepulveda School District. The school, today known as Cerritos School, stands in about the same spot as its precursor. A long-disputed clause in Richardson's will stated that in the event the school would not remain a site for children, the property would revert back to the Richardson family.

Richardson had two homes, the first still at Cypress and Mariposa Streets. Outwardly, the little ranch house has changed very little; but through the years, owners have made many alterations to the interior. Gone are the original chicken wire and redwood covered walls. The original kitchen sink hammered from a single sheet of lead has also disappeared, replaced by modern kitchen appliances. But, although its neighborhood has become crowded with modern apartment buildings, the mystery and intrigue of the little home remain.

The area that was once the vast Santa Eulalia Ranch is now dotted with small businesses and many homes. But the railroad still runs on the same track, and children still learn and play at the Cerritos School on land donated by W. C. Belding Richardson, a man who loved his community.

Ellen Perry



The description for this artist's rendering draws attention to the home of W.C.B. Richardson (*at left with windmill*), the Sepulveda School (*extreme right; precursor of Cerritos School*), and in the left foreground the home of Sheriff Mitchell. It states that the hills in the background are the Hollywood Hills. (*Artist's rendering from the collection of Ellen Perry*)

VICTORIAN WEDDING FINERY ON VIEW AT THE DOCTORS' HOUSE

The Doctors' House third special exhibit for the year opened May 19 in honor of Preservation Week. The opening re-created a Victorian wedding with ribbons, bows and wedding bell decorations, a three-tiered cake, brides, and refreshments. At the opening the models wore authentic turn-of-the-century gowns including a brown taffeta dress, evidently designed by one of our practical foremothers to be appropriate for wearing on other occasions. Two of the dresses are so small that they had to be modelled by nine-year-old Nina Palumbo and eleven-year-old Domenica Palumbo. Other models were Andrea Humberger, Cat Murray, and Rachel Richman. Doyle Kutch and Frances Ferrin provided and served cookies and punch.

The reception attracted nearly 120 visitors, including representatives of the Glendale News-Press and the Daily News. Congratulations to Merry Franzen, whose planning and creative ideas and touches have made all the opening days of the changing exhibits so successful.

Terry Richman

* * * * *

DOCENTS VISIT HERITAGE SQUARE

On May 21, six ladies from The Doctors' House staff piled into a mini-van and headed for Heritage Square in Highland Park. After being joined by another member of their group, they completed a 40 minute tour of a house in the throes of restoration, and got a glimpse of life "upstairs" at the completely restored Hale House. They viewed such curiosities and treasures as a galvanized metal tub, antique armoires, and six connecting bedrooms, and enjoyed hearing a ghost story and other anecdotes. The trip was a wonderful opportunity for the docents to share in the pleasure of experiencing a site related in spirit to The Doctors' House.

Merry Franzen

* * * * *

DOCTORS' HOUSE FEATURED IN VICTORIAN HOMES MAGAZINE

Victorian Homes, a national magazine devoted to Victorian decorating, furnishing, antiques, and house museums, included a beautiful seven-page article on The Doctors' House in its spring 1991 edition. The feature includes color photographs and a story on the history and restoration of the house. The text is based on materials researched and written by Sue Lazara as the basis for the Doctors' House docent training manual.

The article has prompted calls and letters from across the country from individuals previously unaware of Glendale's Victorian treasure. Many persons have requested use of our replica wallpaper patterns and floor finishing and painting techniques in their own private restorations.

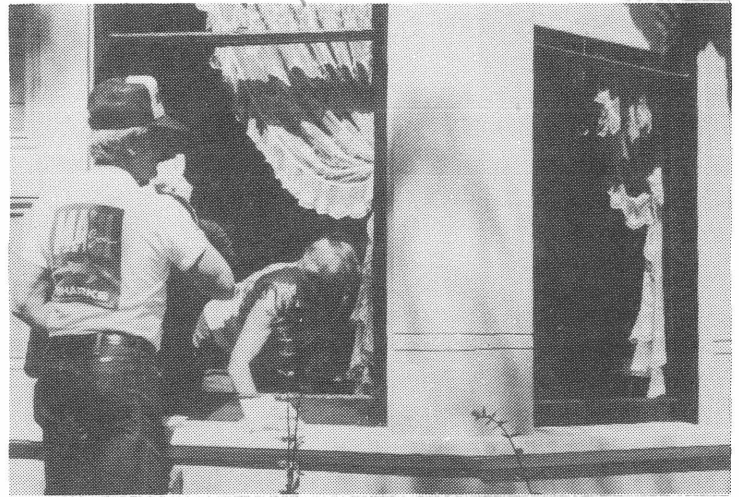
We are pleased and proud that this national recognition has come to Glendale and The Doctors' House. Many thanks to publisher Donna Jeanloz, photographer John Kosmer, and the other members of the Victorian Homes staff who created the piece. Thanks also to Mary Sheppard, who so graciously and capably made the house and information available to the magazine staff.

Copies of the spring issue of Victorian Homes are available at The Doctors' House for \$3.00 each.

Andrea Humberger



Denise Tari polishes silver at The Doctors' House.



Wallie and Lorraine Forstall do windows.



Irene Maben takes a feather duster to kitchen implements.
(House Brilliant Team photos by A. Humberger)



Beautiful Victorian brides in a beautiful house: Andrea Humberger, Cat Murray, Rachel Richman, Domenica Palumbo, and Nina Palumbo. (Photo by Gene Blevins)

HOUSE BRILLIANT TEAM KEEPS DOCTORS' HOUSE SHINING

In preparation for the opening reception of the Victorian Wedding display, the House Brilliant team spent Saturday morning May 18 cleaning the Doctors' House. Three vacuum cleaners roared over the floors and into the corners, feather dusters tickled the moldings and furniture, and polish caressed vintage silver. When the cleaning was complete, some team members helped Merry Franzen set up the wedding display while Dan Franzen spiffed up the garden. Many thanks to the team who left the house sparkling: Irene Maben, Wallie and Lorraine Forstall, Helen Wrede, Amie-Ruth Graham, Sid Gordon, Andrea Humberger, Denise Tari and new docents Leslie Thornhill and Karen Mac Donald.

WELCOME TO NEW DOCTORS' HOUSE DOCENTS

The Doctors' House has added four new docents to its roster. The four women bring varied interests and many new ideas with them as they join our enthusiastic staff.

Marie Andonian, who hails from Wisconsin, has been in the Glendale area since 1964. She has been a Special Education teacher for the Los Angeles Unified School District, and enjoys classical music, PBS, and world literature. Having a lifelong interest in history and architecture, she was attracted to The Doctors' House because of the authenticity of the restoration. Besides working at The House, she hopes to become involved in the research that results in saving landmark buildings.

Karen MacDonald has lived in the Glendale vicinity for the past 13 years. Presently she is doing secretarial work in the electronics field. Her hobbies include working with stained glass and refinishing antique furniture. She recalls being told family stories about crossing the country in covered wagons, and about the treasures that were abandoned along the trail. Intrigued by the tales, and admiring the skills of the artisans of the past, she was drawn to The Doctors' House. She hopes to have a major part in the planning and setting up of future displays at The House.

Leslie Thornhill has been living in this area since 1985. She too is a teacher, presently assigned to South Central Los Angeles. Formerly she was an industrial photographer and a musician. After visiting The Doctors' House, she was entranced by the "magical quality that triggers the imagination." She would like to take part in the decorating chores, plus cleaning and maintenance. Already she has worked with the House Brilliant Team, and the setting up of the bridal display. As a special bonus, her 16 year old daughter, Amy Graham, joins her. Amy is a sophomore at Cal State L.A., and likes gourmet cooking, law, and working with the Renaissance Pleasure Faire. Amy has already helped with the bridal decorations.

Arlene Wilks, who has lived in California all her life, works with Public Relations at the Music Center in Los Angeles. She describes herself as a "people" person. While shopping at the Glendale Galleria she was recruited by Andrea Humberger. She likes The Doctors' House, the people, and the program. Eventually she hopes to work in the administration of The House and help plan programs and events.

We welcome these talented new docents and wish them many satisfying hours as they help visitors appreciate and enjoy The Doctors' House.

Merry Franzen

* * * * *

ALEX EXTRAVAGANZA NOW ON VIDEO

Re-live the excitement of "Alexander: Then and Now"!

Last fall's show was videotaped, and copies of the tapes have been donated to Brand Library and the Glendale Central Library. They can be checked out through the libraries' videotape circulation system. An archival copy has been given to the Special Collections Department at the Central Library, where it will add to the extensive and fine collection of local history material cared for by Special Collections Librarian Barbara Boyd. Whether you want to see the show again or didn't get to see it last September, this is your chance!

TGHS EXPERIENCES SIZEABLE MEMBERSHIP GROWTH IN PAST YEAR

An energetic membership campaign, high visibility, and events such as our Doctors' House programs and the Alex Theatre extravaganza have combined to result in a membership growth of approximately 75% over the past year. We are extremely pleased that so many people have discovered us and have decided to become involved in our activities promoting our city's history and architectural heritage.

Last fall a committee was formed to develop a one-time and ongoing campaign to encourage people to join our organization. A membership brochure was created, a mass mailing was done, and a "welcome" packet for new members was created. New members receive a welcome letter, a list of Board members and committee chairs, a merchandise list, and our map of Glendale's historic sites. Our membership system has also been enhanced by a new membership renewal form designed by David Smith. Many thanks to Membership Chair David Smith and to committee members Bill Shepherd and Dick Montgomery for their creative and energetic approach, which has helped increase our ranks from 170 memberships to 305 (at last count). Many memberships include more than one person (for example, a spouse), and the number of people in The Glendale Historical Society is actually closer to 400.

Continuing members on the fiscal year membership cycle have recently received their renewal notices, and are reminded to pay their dues in order to continue receiving all the TGHS benefits and mailings. New members will have an annual cycle based on the month in which they joined.

* * * * *

NEW MEMBERS

A warm welcome to the following new members, who have recently joined our organization:

Karen MacDonald	Arlene Wilks	Marie Andonian
Colin Sandell	Ed and Mary Ann Prelock	Hugo and Elba Riffel
Helen Grant	Janice Paul	Nancy Toesing
Leslie Thornhill	Amy Ruth Graham	Christina Fahad
Ronald Grzywinski, Esq.	Jim and Libby Brown	Marc Wanamaker
Bob Birchard	June Dougherty	Patty Lusby

* * * * *

KEEPING IN TOUCH

Keeping in touch with current civic issues affecting Glendale's historic and architectural heritage is vital to our success. We urge our members to attend the following regular meetings of local governmental bodies to keep informed of these issues and to be able to respond to them:

City Council	Historic Preservation	Environmental
Every Tuesday	Commission	& Planning Board
2 pm	First Monday of the month	Every Thursday
Council Chambers	2 pm, Room 105	3 pm, Room 105
City Hall	Municipal Services Bldg.	Municipal Services Bldg.
613 E. Broadway	633 E. Broadway	633 E. Broadway

* * * * *

Newsletter editor: Suzanne McKay Assistant editor: Dr. Robert Newcomb
Thanks to Helen Wrede for formatting the newsletter, and to Dave Smith and Daphne Lindstrum for their help in the bulk mailing.

MEMBERSHIP

Membership in The Glendale Historical Society is open to all persons interested in learning about, promoting, and preserving aspects of Glendale's history. Members receive quarterly newsletters, announcements of events, discounts on TGHS tours, and the opportunity to work on a variety of projects. Annual dues are \$20 for Individual, \$30 for Family/Dual, \$50 for Sustaining, \$10 for Student/Senior, \$25 for Non-Profit Organization, and \$100 for Corporate.

General meetings are held monthly (except December, July and August) at 7:30 p.m. on the first Wednesday of the month, in the Carillon Room, Glendale Federal Bank, 401 north Brand Boulevard. Telephone: (818)242-7447.

Membership Application

Name: _____

Address: _____ Zip: _____

Telephone: _____ () New Member () Renewing Member
() Change of Address

I would like to assist in the following area(s):

Education _____	Preservation Action _____	The Doctors' House _____
Research _____	Graphic Arts/Publications _____	Newsletter _____
Other _____		

The Glendale Historical Society
P.O. Box 4173
Glendale, CA 91202

Non-Profit Org. U.S. Postage Glendale, Calif. Permit No. 1183
--

] : (