



The Glendale Historical Society

NEWSLETTER

VOL. 14, NO. 2, 1993

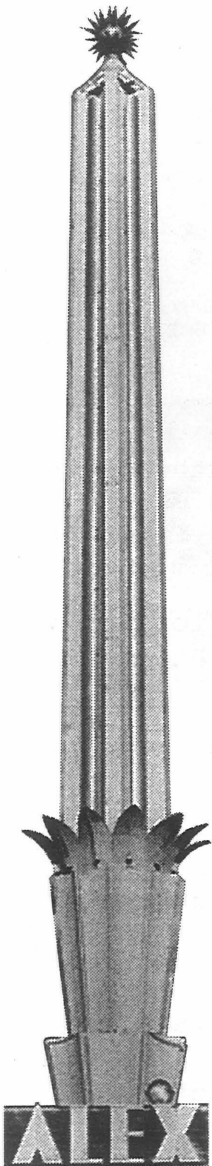
TGHS KICKS OFF ALEX FUNDRAISING DRIVE

The Glendale Historical Society kicked off the Alex Regional Theatre Board's fundraising drive by making a contribution of \$5,000 in August, being the first organization in the community to make a charitable donation to the Alex project. At that time, TGHS learned that the neon on the Alex spire was to be restored to its 1940 splendor, but that the original sparkling neon effect at the top of the spire was not included in the budget. Considering this an important historic element, TGHS donated the \$5,000 needed to recreate the "sparkle". The donation came from proceeds raised in 1990 from the Alex Extravaganza, the live stage show which helped galvanize community support for preservation of the Alex. The show was produced by the Alex Theatre Revitalization Project, a TGHS committee.

Underway since December 1992, the rehabilitation of the Alex is nearly finished, with completion scheduled for November! With the major construction and painting complete, final touches are now being put on the restoration of decorative arts and neon. The carpet is being laid, light fixtures and seats are being reinstalled, and restoration of the terrazzo at the street (removed in the 1970s) is underway.

The Alex Regional Theatre Board, the nonprofit corporation formed to manage the theatre, is currently planning a New Year's Eve Gala to celebrate the grand opening of the revitalized Alex. The black tie gala will feature singer Robert Guillaume and the Glendale Symphony Orchestra on stage, celebrity host Peter Marshall, music and dancing in the street, cocktails and hors d'oeuvres, and a countdown to midnight with special effects. For more information about the New Year's Eve Gala Grand Opening, please call (818) 552-5263.

On Sunday afternoon, January 2, the Glendale Redevelopment Agency and the Historic Preservation Commission will co-sponsor a community open house at the Alex with assistance from The Glendale Historical Society. Volunteer docents are needed for the open house as well as volunteers for the New Year's Gala. To volunteer, please call Andrea Humberger at (818) 957-2615.



PRESIDENT'S REPORT

Recent discussions in the community about the need for a Glendale history museum have included a Glendale News-Press editorial and a TGHS letter to the editor of that newspaper. Our Board of Directors has set the development of a history museum as a long-term objective.

Our letter agreed with the News-Press that a museum is needed and that Glendale's past included some colorful individuals who would provide excellent subject material for a museum. We also pointed out that Glendale already has an excellent "museum" consisting of "the many buildings that portray the development of Glendale from the small farming community of the 1880's into the city of nearly 200,000 in the 1990's." We suggested that a museum should be a focal point from which visitors can go out to explore the rest of Glendale. In our view, "history is around us and should be left there to be enjoyed rather than confined inside the walls of a museum."

However, we have a problem. Our "museum" is very much threatened by both development and ignorance. As a community we are ignorant because we have lost a significant part of our heritage to development. Many of us are not even aware that we have lost it.

There is a song recorded by Joni Mitchell in the 1960s which aptly describes the state of historic preservation in Glendale:

They took all the trees
and put them in a tree museum
and they charged all the people
a dollar and a half just to see them.
Don't it always seem to go
that you don't know what you got
till it's gone.
They paved paradise and put up a parking lot.

We don't know which buildings are significant because most of them have not been surveyed. So older buildings that might be significant are often demolished without consideration of historic importance because the research and documentation has not been done.

We are not against development. We are, however, against the loss of Glendale's heritage to a development process that starts off assuming everything is a vacant lot. There are thousands of buildings in Glendale, yet less than 30 are covered under our preservation ordinance. In the eight years since the adoption of that ordinance not one additional landmark has been brought under its protection.

In 1985 the City of Glendale and our organization jointly conducted a survey of about fifty blocks centered around the original township. What happened to this survey? Nothing. The last time TGHS reviewed the survey area it was found that a large portion of buildings deemed significant had been demolished.

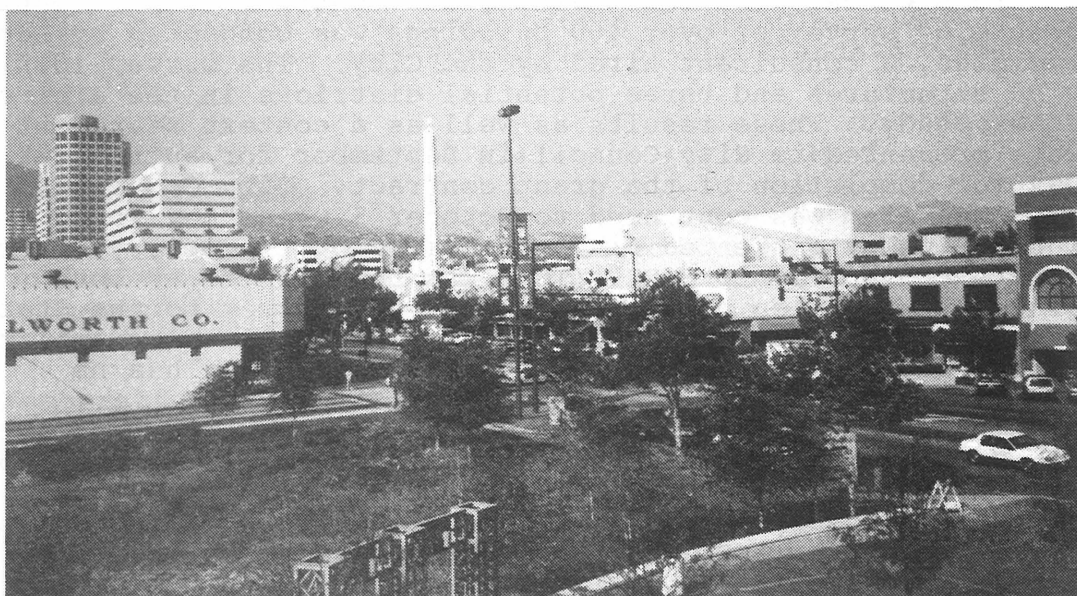
The reason for conducting surveys is to learn more about the history of a community and to identify and evaluate buildings and sites having historic, architectural, cultural or artistic significance. The ultimate objective should be to bring the buildings identified as significant under the protection of the preservation ordinance. From this viewpoint it becomes obvious that Glendale's performance has fallen far short of the objective.

This is not to say that there are no success stories. Certainly the restoration of the Alex Theatre and pending plans for the Goode House are major preservation achievements. However, these buildings were already protected by the ordinance. What is missing is the identification and designation of new landmarks.

Yes, Glendale needs a history museum. But equally important is its need for a comprehensive survey and evaluation to protect its remaining historic resources.

As a member of The Glendale Historical Society you can help with this process by joining one of our preservation committees. Neighborhood Preservation deals with protecting local neighborhoods. Landmark Designation obtains protection for individual buildings by nominating them to the landmark list. Preservation Advocacy provides representation for our organization's position in city affairs. TGHS needs your help in directing our community's resources toward preserving Glendale's heritage.

David Smith



"Redevelopment" has replaced several entire blocks of older downtown buildings with new ones, or, in this instance, the proposal for a new building. Demolition here destroyed the nearly intact 1921 Egyptian Village Cafe, a designated Glendale historic landmark. (Photo by S. McKay)

* * * * *

SPRING TOUR OF RELIGIOUS BUILDINGS

Some of Glendale's most historic, beautiful, and well-loved buildings are its churches and other houses of worship. These buildings, and their congregations, have played an important role in Glendale's development as a community throughout the decades. Next spring, after the Easter holidays, we will be presenting a public tour of Glendale's religious buildings.

We are currently in the planning stages, and are forming a tour committee. If you would like to help in any way, please contact tour chairman Art Fisher at 246-7059. Committee tasks will include site selection, liaison work, research, tour logistics, publicity, tour brochures, and coordinating. We will also be needing docents.

This event promises to be an interesting day of sharing with one another, and with visitors, the richness of our local religious heritage.

PRESERVATION ISSUES: UPDATE

Downtown Strategic Plan: In September City Council approved allocation of \$225,000 toward a \$350,000 study to create a strategic plan for Glendale's greater downtown area. The Glendale Partners, who proposed the plan, will fund the remaining \$125,000. A TGHS representative spoke at the City Council hearing and has submitted a letter advocating that the City maximize its investment by making sure the plan considers the potential that vintage buildings offer the greater downtown area -- not just as museums and historic sites -- but as functioning offices, commercial buildings, residences, churches, etc. TGHS also urged that historic preservation be given a voice in the development of the strategic plan through the inclusion of TGHS representatives and other Glendale residents concerned with Glendale's heritage. TGHS has offered its assistance and participation in helping to shape this very important plan for the City's future.

"Auto Row": As we have previously reported, the City of Glendale received a \$10,000 matching grant from the State Office of Historic Preservation (SOHP) to conduct a survey of historic, architectural and cultural resources in the South Brand Boulevard Specific Plan area ("Auto Row") which is bounded by Colorado, San Fernando Road, Glendale Avenue, and Central. The reconnaissance or "windshield" survey of over 400 buildings was conducted by Leslie Heumann & Associates, a consultant hired by the City. The survey identifies approximately 50 structures and three potential districts in the area as worthy of further study. These results as well as a context statement of the entire city were presented to City Council in September for authorization to forward to SOHP for completion of the grant contract. City Council deadlocked 2-2. The item was continued to October 5 when they voted 3-1 (Baker abstained; Plumley dissented citing concerns over property owners' rights) to forward the survey to SOHP. TGHS was represented at both hearings, urging authorization of transmittal of the survey to the State and advocating that the survey is an excellent research and planning tool for the City. As the city attorney assured City Council, the survey has no implications to property owners.

Redevelopment: Much has changed since our last report on the redevelopment of Blocks 29 and 30 (bounded by Harvard, Brand, Broadway, and Louise). The Glendale Redevelopment Agency (GRA) has entered into a 180-day negotiation period with master developer JMB/Urban Development Company of Los Angeles. During this period the developer is to create a plan, determine types of businesses for the area, and pursue financing opportunities. In August, JMB presented preliminary plans which call for the demolition of all buildings on the east side of the 100 block of South Brand. These include six buildings evaluated as locally significant in the 1983-4 "Glendale Architectural and Historical Survey" which TGHS conducted in cooperation with the City of Glendale. Three of the noteworthy buildings were designed by prominent local architect Alfred Priest, including the Penderoy Building (now California Federal) at 158 S. Brand, the Glendale Theater at 120-126 S. Brand, and "The Barn" at 118 S. Brand. TGHS has submitted a letter and a representative presented it verbally at the October 19 GRA meeting advocating retention of these buildings, in particular the Penderoy Building. The next report on Blocks 29 and 30 by the developer is scheduled for the GRA meeting on November 16.

Andrea Humberger
Chair, Preservation Advocacy

* * * * *

Newsletter editor: Suzanne McKay

Thanks to all newsletter contributors, to Andrea Humberger for her production assistance, and to David Smith and Daphne Lindstrum for their help in the bulk mailing.

PERMANENT ENDOWMENT FUND ESTABLISHED

This past spring The Glendale Historical Society received an unprecedented gift from Dick Montgomery, our treasurer and one of our charter members. As we all know, funds are hard to raise. Being an all volunteer nonprofit organization, TGHS must always work hard to raise funds to produce our publications and run our ongoing programs such as The Doctors' House. Dick understands this and decided to help us for decades to come by establishing a permanent endowment fund in our name with the Glendale Community Foundation. It will work like a constantly growing savings account, generating earnings each year to help us with our programs.

The explanation of the fund reads as follows: "It was established to benefit The Glendale Historical Society by Richard Montgomery in memory of his wife Natalie P. Montgomery. The earnings of this fund are distributed annually to The Glendale Historical Society for its programs and projects. Additional contributions are welcome."

On behalf of our organization, I thank Dick Montgomery for his generosity and foresight. Additional gifts to the fund can be made with cash or appreciated assets such as stocks, bonds, and mutual funds. For more information about making a contribution to The Glendale Historical Society endowment fund, please call Tom Miller at the Glendale Community Foundation (818) 241-8040.

Andrea Humberger

* * * * *

TGHS MEMBERSHIP GROWS

Our newly elected Board of Directors has made TGHS membership expansion the top priority for the organization, and they devoted much time in the summer to recruiting. Thanks to the ideas and efforts of many people, this membership drive has been very successful.

Membership packets were mailed to members of the Glendale Chamber of Commerce. This mailing included the standard TGHS membership brochure and a letter from TGHS president addressing the question of why chamber members would want to join the local "hysterical" society. This drive resulted in 14 new memberships, several in the new category "Small Business" (\$35 annually). TGHS members pitching in to assemble and address nearly 1700 pieces of mail under the leadership of membership chairwoman Phyllis Kenney included Vi Long, Helen Wrede, David Smith, Art Fisher, Bill Shepherd, Wallie and Lorraine Forstall, Dick Montgomery, Jean Felkel, and Daphne Lindstrum.

In July Margaret Hammond set up a photographic exhibit and made a presentation to the Adams Hill Homeowners Association. TGHS Vice President Bill Shepherd made a presentation about TGHS membership. This meeting resulted in four new members.

In August the Montrose Chamber of Commerce held a gala to celebrate the 80th anniversary of the founding of their community and generously offered TGHS a table to display merchandise and distribute brochures. We held a drawing for a family membership and a copy of Glendale: A Pictorial History. The lucky winner of this drawing was John Trautman. In addition to Mr. Trautman, five other people/families joined TGHS. Members staffing our table included Andrea Humberger, Bill Shepherd, Art Fisher and David Smith. Members Sid Gordon and Shannon Pedlow also participated in the gala celebration.

We are pleased to welcome all our new members, and we look forward to their participation in our various activities.

David Smith



Nell Shipman (rear center) and her son Barry (front) pose with the cast of *Trails of the North Wind* in 1923. (Photo from the Nell Shipman Archives, Boise State University)

THE DOCTORS' HOUSE REVEALS ANOTHER SECRET

A previously unknown aspect of The Doctors' House history has recently come to light following the publication of an article about the house in the *March Westways Magazine*. Several people connected with early silent film actress and producer Nell Shipman (1892-1970) saw the article and recognized the house as the one in which Shipman resided during the years 1917-1920, three years after the last doctor owned it and before the Dzaich and Kordich families bought it.

According to Nell Shipman's son Barry, who now resides in San Bernardino, his family rented the house to please his mother's British parents. They preferred to live in a Victorian-style home instead of a more modern one, and in rural, quiet Glendale instead of Hollywood. Many important professional and personal events occurred in Shipman's life during her residency at the house. Shortly after she moved her husband, son, and parents into the "little white house on a street named Wilson," she became seriously ill with influenza -- one of many to be stricken during the 1918 epidemic. While she was near death and in a coma, her 55-year old mother died from complications of the same flu. By 1920 her father had died and she had divorced her husband -- an event which made front-page headlines in the Los Angeles Evening Herald.

It was at the house on Wilson that Shipman met with Joseph Walker, who later won an Academy Award for cinematography work in Frank Capra films, and Bert Van Tuyle. She hired them as cameraman and production manager for her first independently produced film, "Back to God's Country". This is the oldest surviving silent feature film shot in Canada. The film was very successful, returning 300% in profits, and was one of 1919's biggest international hits. Shipman subsequently produced more films in a rugged area of Idaho. She was applauded and admired during her time for her strong, self-willed heroines, breathtaking locations, and wild animal co-stars. Boise State University now has a collection of memorabilia, videotapes of her films, and her autobiography, The Silent Screen and My Talking Heart. Frequent references to and descriptions of her Glendale home appear in this autobiography. One photograph in the book shows 8-year old Barry, Nell's father, and a friend on the front sidewalk of the house.

When Barry Shipman learned of the preservation of the house, he notified his granddaughter, Lani Shipman, a drama major at U.S.C. On May 12 she took a private tour of the house with TGHS docent Terry Richman and Andrea Humberger to see where her famous great-grandmother had lived. On August 18 Barry's daughter (Lani's mother) Nina Shipman, and film producer Cindy Chenault were given a private tour. Nina has 150 acting credits and has performed in a one-woman show based on her famous grandmother's life and contributions to filmmaking. Chenault (maiden name Robichaux) grew up in Glendale near The Doctors' House and recognized it in the Westways issue. She and her husband own Hightide Productions, which has optioned the rights to make Nell's autobiography into a film.

In December 1992 Shipman's contributions to women's advancement, the appreciation of ecology, and early-day filmmaking were featured on "Entertainment Tonight." In the seven-minute segment Leonard Maltin spoke about the "film pioneer who was 70 years ahead of her time." Further information is being compiled by Naked Eye Productions in San Francisco, which is creating a documentary video on her life.

We are delighted that this additional aspect of The Doctors' House history has been revealed, and look forward to sharing it with the public.

Terry Richman
Suzanne McKay

* * * * *

TGHS BOARD OF DIRECTORS TAKES OFFICE

At their June meeting The Glendale Historical Society Board of Directors selected the officers for 1993-1994. The officers, who were installed September 19 in ceremonies at the Casa Adobe de San Rafael, are the following:

President: David L. Smith
Vice President: Bill Shepherd
Secretary: Dan Cabrera
Treasurer: Dick Montgomery

Also serving on our Board of Directors are Caroline Beniassians, Margaret Hammond, Phyllis Kenny, Doyle Kutch, and Helen Wrede.

Caroline is a new Board member who was elected along with Doyle and Dick by our members at our annual general membership meeting in early June. She brings to our Board a longtime interest in history and education. She was born in Berkeley, and resided for a number of years in Oregon and Iran before coming to Glendale in 1979. Since her husband's family is of Armenian heritage, she has learned a great deal about Armenian history and culture. Professionally, she is Technology Co-ordinator at Chamlian Armenian School in northern Glendale. Caroline joined TGHS during preparation for the Alex Extravaganza, serving as a volunteer for that event. As a Board member, she is particularly interested in developing young people's interest in Glendale history.

We warmly welcome Caroline and wish her well during her term. Many thanks to retiring Director and president Andrea Humberger for her three years of energetic, outstanding service. She has our continuing appreciation and support as she contributes her knowledge and commitment to our preservation activities.

TGHS MEMBERS ATTEND STATE HISTORIC PRESERVATION CONFERENCE

"Celebrate Diversity: Communities United for the Future" was the theme of the annual statewide historic preservation conference held in June aboard the Queen Mary in Long Beach. Several TGHS members attended the conference, sponsored by the California Preservation Foundation and local groups. The conference brings together professionals and volunteers from throughout California to explore and celebrate current historic preservation issues and achievements.

Bill Shepherd was very impressed with this, his first CPF Conference. He attended most of the workshops of the track which concentrated on "Neighborhood Issues in Culturally Diverse Communities" in order to learn ways our organization can help Glendale's newer residents understand why TGHS is working to save such sites as the Alex Theatre and the Goode House. He remembers one of the speakers stating, "Preservation can promote harmony among various cultural groups". Keeping that statement in mind, he believes, will be important if TGHS is to achieve success in our preservation goals. We need to target all of Glendale's cultural groups and bring their energies and talents into our efforts in order to meet the challenges to save our heritage.

Bill also attended a session dealing with fund raising and volunteers. The workshop covered basic money raising techniques such as special events, grants, and requesting special donations. One of the key issues stressed was the need to bring young people into our activities. After all, our Glendale heritage will one day belong to our youth, and we need to help them understand the value and techniques of historic preservation.

Suzanne McKay attended a variety of workshops on both the traditional and newly-emerging aspects of historic preservation. The sessions on National Register criteria and the educational programs at Rancho Los Alamitos provided helpful details about restoring and presenting historic properties. Other fascinating sessions offered examples of various ethnic and neighborhood groups working on projects which add to our knowledge of history and promote community pride. In another panel presentation, experts in preservation law addressed the issue of "public vs. private" property rights, including arguments sometimes used by property owners to circumvent or challenge historic preservation laws.

Andrea focused on the Neighborhood Issues Track, attending sessions entitled "Preservation in Culturally Diverse Communities", "Preservation Rebuilds L.A.", and "Community-Based Arts Organizations." She also attended a session given by the State Office of Historic Preservation on the proposed changes in the California inventory system of historic resources and potential changes in the State survey forms for documenting such resources.

* * * * *

KEEPING IN TOUCH

Keeping in touch with current civic issues affecting Glendale's historic and architectural heritage is vital to our success. We urge our members to attend the following regular meetings of local governmental bodies to keep informed of these issues and to be able to respond to them:

**Redevelopment Agency
and City Council**
Every Tuesday
1:30 and 2:00 p.m.
613 E. Broadway
City Hall
Council Chambers

**Historic Preservation
Commission**
First Monday of the month
2:00 p.m.
633 E. Broadway,
Municipal Services
Building, Room 105

**Environmental &
Planning Board**
Thursdays
3:00 p.m.
633 E. Broadway,
Municipal Services
Building, Room 106

N.S.

TGHS BESTOWS ANNUAL AWARDS

At our 1992-1993 Awards Presentation on Saturday, May 22, The Glendale Historical Society presented certificates for leadership, service and contributions to the celebration and preservation of Glendale's heritage.

Certificates of Commendation, for those in the community who have taken significant action on behalf of preservation in Glendale, were awarded to:

City of Glendale Community Development & Housing for ongoing leadership in promoting the preservation of the historic Goode House.

City of Glendale Public Works for designing the plan to refurbish and reinstall Glendale's historic streetlights on Broadway.

Los Angeles Conservancy for their dedicated efforts to preserve Glendale's Public Service Building.

Jack Rubens and William Scott, attorneys with **Sheppard, Mullin, Richter, & Hampton**, for their dedicated efforts to preserve the Public Service Building.

Timothy J. Brandt and Brian Bartholomew, architects from the **AIA/LA Historic Preservation Committee**, for their dedicated efforts to preserve Glendale's Public Service Building.

Walt Disney Imagineering for creating an Alex Theatre barricade facade showcasing the theater's impressive 68-year history.

Bob Torres and Montrose Verdugo City Chamber of Commerce for producing a pictorial history celebrating the history of Montrose and Verdugo City.

Alvin Simon & Hisashi Yoshiara for giving new life to the historic Bekins Warehouse Building by reusing the first floor as the Cinnabar restaurant.

Certificates of Appreciation were awarded, for outstanding service by members of The Glendale Historical Society, to:

Merry Franzen for dedicated service on the Board of Directors 1990-92.

Andrea Humberger for outstanding service on the Board of Directors 1990-93.

Ethel Shearer for dedicated service at The Doctors' House.

TGHS presented its first **President's Award** to **Suzanne McKay**, whose creativity and perseverance have set a high standard of integrity and achievement during her many years of dedicated service.

Many thanks to Richard and Craig Montgomery for hosting the festivities at their lovely home; Framepros and Roy Turnage for framing the President's Award; Sid Gordon for framing the certificates and providing music; Margaret and Fred Hammond for setting up and serving refreshments; Phyllis Kenney for decorating; and to Dan Cabrera, Curt Kendall, Suzanne McKay, Bill Shepherd, and David Smith, who assisted in the selection of the award winners.

Andrea Humberger
Awards Chair

Spotlight on Service

Dr. Robert Newcomb



By Andrea Humberger

Robert Newcomb was born in Maracaibo, Venezuela, the son of an oil businessman whose work took the Newcomb family all over the world. By the time he went to college, Robert had also lived in Indonesia, Canada, and the United States. He attended Stanford University for one year before heading off to the military and then returned to Stanford where he earned a B.A. in geography. After earning an M.A. and Ph.D. in geography from U.C.L.A. Robert became a professor of geography at Cal State Los Angeles, where he taught for three years before marrying. In 1963 Dr. Newcomb and his wife Karen moved to Denmark where Dr. Newcomb held a position as lecturer in geography at Aarhus University. In 1975 the Newcombs returned to the United States, settling in Karen's home town of Glendale. Dr. Newcomb taught geography at Cal State Northridge from 1976 to 1992, when he retired.

The Newcombs joined TGHS in 1979 when it was being re-established to save The Doctors' House. In 1980 Dr. Newcomb accompanied The Doctors' House, on foot and by car, from its original location on Belmont and Wilson to its present home in Brand Park. He assisted in the preparation of some of the written materials on The Doctors' House.

Dr. Newcomb served as a docent on several TGHS tours, including "Tropico" and "Stone Houses". He worked as newsletter editor for two years, assistant editor for nearly 10 years, and has been a regular newsletter contributor. He served on the TGHS Board of Directors for two terms (1983-1989) and served as President for one year.

As a generous and reliable contributor to our organization, Dr. Newcomb worked on bulk mailings, sorting and transporting newsletters and other mailings for about six years. He served as Program Chair for eight years and has served on the Nominating Committee at least three times. Dr. Newcomb was a speaker on behalf of TGHS at early forums regarding the preservation of the Alex Theatre, and has participated in the Speakers Bureau program. For the past five years, he has conducted the installations of the TGHS Board of Directors, held annually at Casa Adobe. He is currently serving his second year on the Glendale Clean Committee as the TGHS representative.

A widower since 1990 and retired since 1992, Dr. Newcomb maintains an extremely active life. He currently serves as president of his condominium homeowners association, serves on committees for St. Marks Episcopal Church, and remains an active member of his professional associations. He takes a week long course each summer at Stanford University and continues a lifetime of travel, having visited Europe last year.

We appreciate Dr. Newcomb's continued and varied volunteer career with The Glendale Historical Society. His long term dedication and versatility have contributed greatly to the success of our organization.

WELCOME TO NEW DOCTORS' HOUSE DOCENTS

Among the new Doctors' House docents who completed their training last year and are now giving tours are Emily Wargo and Raffelle Ricci. Emily, a Burbank native, is a senior at Providence High School. She is active in her school, church, and community. She is glad to be working at The Doctors' House, not only because of her interest in understanding and preserving history but also because she loves working with all types of people. She reports that she has found only energetic and positive people at The Doctors' House!

Raffelle is a professional color and image consultant specializing in etiquette. For the past 12 years she has owned and operated "Your Image", an image consultant firm specializing in instruction for girls aged 7-18. Her other activities have included working as an usherette and tour guide at the Ambassador Auditorium.

We are happy to have Emily and Raffelle in our Doctors' House Docent Guild. Others wishing to train and serve as docents are encouraged to contact Helen Wrede at 243-4938 or Ethel Shearer at 243-6414.

* * * * *

IN MEMORIAM: DOROTHY WEST

The Glendale Historical Society lost a beloved friend when longtime member Dorothy West passed away on June 14. Dorothy and her late husband Ray were cheerful, faithful supporters of TGHS activities, and Dorothy continued her involvement as long as her health allowed (aided by the welcome transportation assistance of Sid Gordon).

Dorothy and Ray were for several years the official greeters at our general membership meetings, and they attended nearly all of them. For several years they were part of the weekly Saturday volunteer work crew which restored The Doctors' House. Ray's expertise was refinishing all the door hardware and hinges. Dorothy worked with the team removing layers of paint from spindles, doors, and windows and jokingly gained the nickname "the stripper."

The Glendale Historical Society has received many donations in memory of Dorothy, and we will honor her by installing a small memorial plaque at The Doctors' House.

Sid Gordon
Suzanne McKay

* * * * *

TGHS OFFERS BOOKS ON MONTROSE, GRAND CENTRAL AIR TERMINAL

We are pleased to announce the addition of two books to our collection of local historical merchandise for sale. Now back in print, **Madcaps, Millionaires, and Mose** (\$16), by John Underwood, is a 144-page pictorial history of the Grand Central Air Terminal and early aviation activity in Glendale. **Montrose, A Pictorial History** (\$15), published recently by the Montrose Chamber of Commerce, chronicles the development of this foothill community in the northern part of our city. Its 80 pages contain a wealth of historic photographs.

The books may be purchased at The Doctors' House on Sunday afternoons between 2 p.m. and 4 p.m. or by mail from TGHS, P.O. Box 4173, Glendale, CA 91202. Mail orders should include an additional \$2 per book to cover postage and handling.



Dick Montgomery, Margaret Hammond, Sid Gordon and Suzanne McKay help celebrate Amtrak's 22nd Anniversary of service in Glendale.

TGHS JOINS IN AMTRAK ANNIVERSARY CELEBRATION

On Saturday, May 1 The Glendale Historical Society joined Amtrak, railroad enthusiasts, the Southern California MTA, Caltrans, and members of the community in a celebration of Amtrak's 22 years of service from the Glendale Station. The picturesque 1923 depot, which now serves as a station for Metrolink as well as for Amtrak, will eventually be the historic focal point of the large-scale Glendale Transportation Center.

Staffing our booth of merchandise and chatting with the public were Dan and Barbara Leimeter, Dick Montgomery, Shannon Pedlow, Sid Gordon, Suzanne McKay, and Margaret Hammond. Margaret's large photo displays depicting Tropicco (as the area around the depot was originally known) were especially popular with visitors, eliciting many memories of Glendale's early years. We salute Glendale's Amtrak agent Joe Molina for his enthusiastic promotion of this well-used local landmark.

Suzanne McKay

* * * * *

IN MEMORIAM: BOB CASKEY AND JOHN EVAN MILLER

The Alex Theatre lost two of its longtime supporters this year with the death of Bob Caskey in January and John Evan Miller in March.

Bob Caskey became Assistant Manager of the Alexander Theatre in 1929 at the age of 17 and worked at the theatre until the mid-1930s. Caskey attended Glendale High School at the same time as Marion "Duke" Morrison, better known as John Wayne. Bob and Duke worked next door to each other during those high school days when Duke was jerking sodas at the Sum Drug Store and Caskey was working at the Alexander. He and Duke had an arrangement: Caskey got free sodas from Sum's and Duke got into the Alexander for free! After he retired in 1977, Caskey worked part time as a door man at the Alex until it closed in the fall of 1991. "Alexander Then and Now", presented at the Alex in September 1990 by the Alex Theatre Revitalization Project, a TGHS committee, was co-dedicated to Bob. In portraying the impressive history of the Alex Theatre, Paul Shipton's original script "Alexander Then and Now" revolved around Bob Caskey's memories of the Alex. Bob's contributions at this early phase of the efforts to preserve the Alex were invaluable.

John Evan Miller was a longtime participant in the efforts to preserve the Alex Theatre. Beginning in the fall of 1987, he was an advisor on the preparation of the TGHS position paper and reuse study on the Alex. He also served as a consultant for the research for the script of "Alexander Then and Now". John wrote several articles on Alex history and provided historic photographs of the Alex for the event souvenir program. Under John's presidency, the Los Angeles Historic Theatre Foundation provided regular coverage of the Alex project in their newsletter. In late 1991, when the City of Glendale had committed itself to rehabilitating the Alex, John participated in the public process. He attended most of the public study sessions and design review hearings from late 1991 through June of 1992 and at each stage of design review, submitted a letter outlining the Foundation's positions. Much of John's input helped shape the Alex rehabilitation into a more sensitive preservation project. Those of us who worked with John and who will be attending the Alex Grand Opening on New Year's Eve will be filled with thoughts of him, an appreciation for his vast contributions to the Alex project, and gratitude for those elements of neon and other historic details which remain in the Alex because of his efforts.

Andrea Humberger

* * * * *

DONATIONS FUND PURCHASE OF LASER PRINTER

The TGHS computer printer fundraising campaign was a great success. We were awarded a \$500 matching grant from the Glendale Community Foundation, contingent on TGHS raising the same amount, to purchase a laser computer printer. Thanks to the generous donations by many members, we exceeded our goal. A heartfelt thanks goes to all the contributors.

Developing the successful grant request would not have been possible without the assistance of David Smith, Andrea Humberger and Glendale Community Foundation Executive Director Tom Miller. Thanks to each of them for their help. Additionally, we thank Daphne Lindstrum for her help in the mailing of the donation request letters and Dick Montgomery for his help in processing the checks.

We purchased our printer in June and will be using it to produce TGHS fliers and publications. The TGHS Board of Directors is currently investigating usage of the extra funds raised. Some uses being considered are updated computer programs, other office equipment, and a slide projector for use in our Speakers Bureau Program.

William Shepherd

* * * * *



Incoming TGHS President David Smith and outgoing President Andrea Humberger accept a laser printer purchased with the assistance of the Glendale Community Foundation, represented by Executive Director Tom Miller and Board of Trustees member Ray Dumser.

* * * * *



FRANK SUMEN
418 NO. GLENDALE AVE., GLENDALE, CA 91206
PHONE: (818) 507-9129

DIORAMA RECREATES EARLY GLENDALE

TGHS has received a fascinating and unique donation: a diorama of Broadway at Howard Street in Glendale, circa 1913. The three dimensional model includes the old Glendale City Hall (built in 1910 and demolished in 1940), a 1913 streetcar, and a 1911 Ford truck. The streetcar, known as "the Galloping Goose", ran along Broadway and Glendale Avenue at a time when Howard Street extended through the civic center to Broadway.

The diorama was created by Don Dow, who retired this fall from the City Clerk's office after more than 15 years. Fascinated by Glendale's small town past, Dow spent approximately 1,248 hours over more than two years creating the models which he completed in 1987. Dow based the models on a composite of three historic photographs. He received assistance from Norma Smallbone, who created several cutout figures, including one of E.D. Goode, to bring the historic street scene to life. (Goode established The Glendale and Eagle Rock Railway Company in 1909.)

The diorama, which was displayed at City Hall in 1987, has since then lacked a permanent home. The diorama was generously donated to The Glendale Historical Society by Don Dow this past spring. We enthusiastically accepted it, and are now exhibiting it at The Doctors' House. An excellent educational addition to The House, the diorama shows tourgoers how downtown looked and what life was like in Glendale just after the turn of the century only a few blocks away from The Doctors' House.

Andrea Humberger

* * * * *

"HOUSE BRILLIANT TEAM" RENEWS DOCTORS' HOUSE BEAUTY

Thanks to the "House Brilliant Team", The Doctors' House received a much needed dose of tender loving care and cleaning during the past few months. The enthusiastic crew has included Helen Wrede and her daughter Betsy, Sid Gordon, Dick Montgomery and his son Craig, Doyle Kutch, Karen MacDonald, Gerry Behoteguy, Lorraine Zabaro, Ethel Shearer, Robert Seiden, Denise Tari, Merry Franzen, and chairwoman Leslie Thornhill. In addition to cleaning throughout, the team noted problems and repair needs. A list of these was later given to the TGHS Board for their information and possible action.

Due to the high volume of traffic through the house, these cleanup days are held about four times a year. Helpers are always welcome. To volunteer, contact Doyle Kutch at (213) 245-0941.

Leslie Thornhill

* * * * *

EDITOR'S THANKS

The past 12 years I've spent as editor of our TGHS newsletter have been truly rewarding. I've been privileged to work with great volunteer helpers, talented contributors, and exciting subject matter. Although we've evolved into a more sophisticated, computer-assisted publication, I've tried to maintain the characteristics of a grass roots forum geared towards our members and community. Time constraints have prompted my retirement as editor, but I'll be glad to advise and assist the future editor. Anyone interested in assuming this vital, rewarding position should contact TGHS, 242-7447.

The Glendale Historical Society
Statement of Cash Receipts and Disbursements
Year Ended November 30, 1992

	General Fund	Doctors' House Acquisitions Fund	Alex Theatre Revitalization Project Fund
REVENUE AND SUPPORT RECEIVED			
Membership Dues	\$ 4,810.00	\$	\$
Merchandise Sales:			
Glendale Pictorial History	1,138.20		
Historic Sites Maps	437.00		
Other	932.25		
Donations	483.97		
Doctors' House Tour Donations	554.98		
Fashion Show Fundraiser	754.12		
Christmas Merchandise Fair	527.30		
Interest Income	286.63	36.52	152.67
Other Revenues and Support	361.14		328.00
	10,285.59	36.52	480.67
TOTAL CASH RECEIPTS			
COSTS AND EXPENSES PAID			
Doctors' House Docent Guild			
Insurance	1,541.12		
Other	411.43		
Preservation Committee	464.58		
Membership Committee	505.50		
ATRP Committee			98.82
Doctors' House Acquisitions Committee		425.33	
General Expenses			
Newsletter Printing and Postage	1,354.03		
Meeting Publicity	602.03		
Dues in Other Organizations	426.00		
Postage, Supplies & Printing	647.53		
Awards, Gifts and Memorials	405.68		
Social Activities	343.71		
Telephone	197.61		
Officer Expense Reimbursements	195.00		
Other	324.48		
Merchandise Purchased For Resale	1855.96		
	9,274.66	425.33	98.82
TOTAL CASH DISBURSEMENTS			
EXCESS OF CASH RECEIPTS OVER DISBURSEMENTS	\$ 1,010.93	\$ (388.81)	\$ 381.85
CASH BALANCE, December 1, 1991	8,880.97	1,849.10	6,150.69
CASH BALANCE, November 30, 1992	\$ 9,891.90	\$ 1,460.29	\$ 6,532.54

NEW MEMBERS

A warm welcome to the following new members who have recently joined our organization:

Barbara Alm	H. Gene Mestel
Patricia L. Bates	Michael Morgan
Charles B. Briley	Mary Morris
Richard C. Brouillard	Tom O'Laughlin
Randy Carter	Ann and Bob Oliphant
Gene Dudley	Mary Ann Plumley
Geoff and Julia Elliott	Ron Reed
Pam and Brian Ellis	Margaret Jean Risk
Frances Ferrin	Judith Sackson
Anthony and Diane Fleitas	Vizma and Jame Sarnoff
Diana M. Gottshall	Barbara D. Stine
Irene Hartz	Lisa Tanahashi
Margaret Ann Kilpatrick	Fred Thomas and
Barbara Lawrence	Judith Leslie-Thomas
Ed and Paulette Lee	Andrew J. Thomas, Esq.
Ernest A. and R. Harriet Lindner	Robert and Sharon Thompson
Stuart and Dawn Lovi	John Trautman
Art Manke	Dave and Erlinda Weaver
Eileen and John Manus	Raymond W. and Charlotte West
Dick Matthews	John and Margaret Willcox

SUSTAINING, SMALL BUSINESS AND CORPORATE MEMBERS

Special thanks to our new and renewing Small Business, Corporate and Sustaining Members:

Small Business

Gaskin Creative Communications, Inc.
Harley Davidson of Glendale
JoAnn Hipp
Ronald Ingledue, Ingledue Travel Publications
Rabsima Krikorian, Village Green
John E. Neville, D.D.S.
Pacific Gateway College
Josephine Scarpace
Dr. W.G. Schirmer, Schirmer Chiropractic Corp.
Cathy Zappala, Colonial Escrow, Inc.

Corporate

Jim DeMonaco, Walt Disney Imagineering

Sustaining

Michael and Carole Dougherty
Steven and Christy McAvoy
Marilyn McCumber, Esq.
Don and Bea Penniall
Bill Shepherd

We also express our appreciation to the following donors for their recent contributions to our organization:

First Interstate Bank of California Foundation
Transamerica Foundation

The Glendale Historical Society Presents:

Christmas at the Doctors' House

at Brand Park, Glendale



December 4th, 7-9 p.m.

Candlelight Tours & Refreshments

Authentic Victorian Christmas Ornaments



December 12th 2-4 p.m.

Hours Tours and Holiday Bake Sale

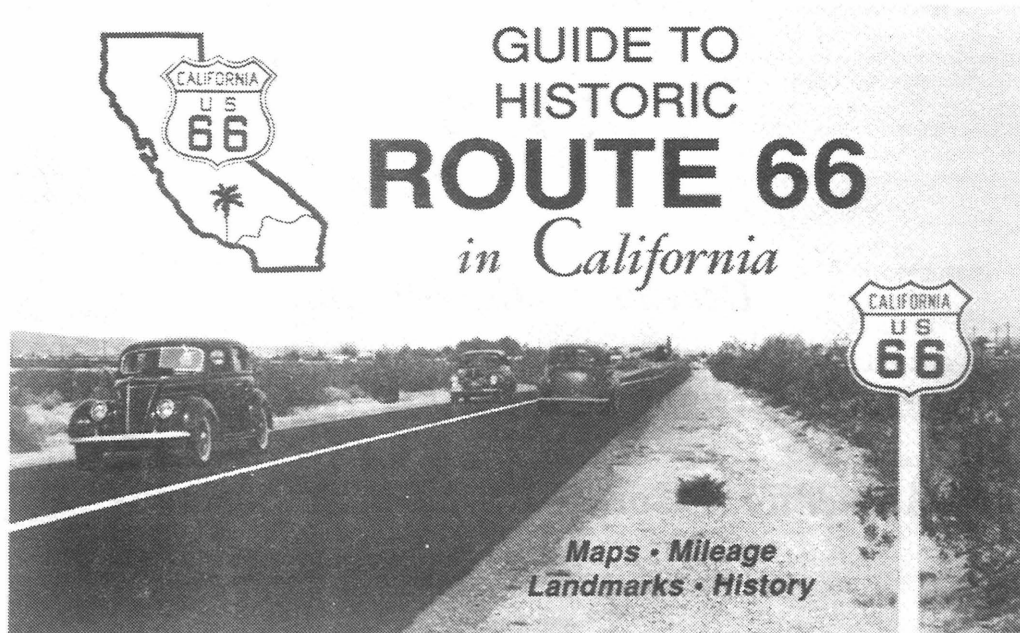
Victorian Style Gifts and Clothing Sale



For Information call (818) 242-4290

EXTRA!!! EXTRA!!! EXTRA!!!

HISTORIC ROUTE 66 JOINS TGHS!!!



Relive the memories of the days before the interstate highways when Route 66 was the way to travel to and from Southern California. Published by the California Historic Route 66 Association this guide book covers the California segment of US 66. Starting with the Arizona border crossing at Needles, this guide takes you across the sizzling Mojave Desert to Barstow, Victorville, San Bernardino, Cucamonga, Azusa, Pasadena and finally to the palm trees and sands at Santa Monica. 48 pages includes maps, photographs and descriptions of the highway that made history.

Order Form

Guide to Historic Route 66 in California. Please send _____ copies to:

Name _____

Address _____

City _____ State _____ Zip _____

Please enclose \$9.25 per copy including postage and sales tax. Also available at the Doctors' House for \$7.50 plus tax.

The Glendale Historical Society
P.O. Box 4173, Glendale, CA 91202

**THE GLENDALE HISTORICAL SOCIETY
CALENDAR OF EVENTS FOR FALL AND WINTER 1993**

November 28
SUNDAY Art Discovery Tour of Highland Park and Mount Washington. Self-drive tour of artists' studios and homes in the Arroyo Seco area. Sites include the Lummis House, the Judson Stained Glass Studios, and 50 artists' studios. 10 a.m. - 6 p.m. Cost \$7.50, \$5 for seniors and students. Sponsored by the Arroyo Arts Collective and the Historical Society of Southern California. For further information, phone (213) 222-0546.

December 4
SATURDAY Candlelight Tours of The Doctors' House. 7 p.m. - 9 p.m. Tours and refreshments amidst authentic Victorian Christmas decorations, in the glow of candlelight. Free. For further information, phone (818) 242-7447.

December 5
SUNDAY TGHS Annual Holiday Party. Join old friends and new at our seasonal festivities featuring potluck specialties from our members' kitchens. Tuesday Afternoon Club, 5 p.m.- 8 p.m. For further information: (818) 242-7447.

December 12
SUNDAY Doctors' House Tours and Holiday Boutique. Tour the house, decorated for the holidays, and shop for baked goods and Victorian style gifts and clothing at vendor booths. 2 p.m. - 4 p.m. For further information, call (818) 242-7447.

December 31
FRIDAY Alex Theatre Grand Opening Celebration. New Year's Eve Gala featuring singer Robert Guillaume, the Glendale Symphony Orchestra, and Peter Marshall, dancing in the street, drinks, hors d'oeuvres, and a countdown to midnight with special effects. 8 p.m. - 1 a.m. Tickets \$75-\$200. Sponsored by the Alex Regional Theatre Board. For further information, call (818) 552-5263.

January 5
WEDNESDAY TGHS General Membership Meeting. Program to be announced. Members will receive advance notification by mail. For further information, call (818) 242-7447.

February 2
WEDNESDAY TGHS General Membership Meeting. The California Historic Route 66 Association will present a slide show about California sections of Route 66. 7:30 p.m. Carillon Room, Glendale Federal Bank, 401 N. Brand Blvd.

----- **Continuing** -----

SUNDAYS Doctors' House, Brand Park. 1601 W. Mountain. Open free to the public. Docent-guided tours of the restored Queen Anne-Eastlake home. Open 2 p.m. to 4 p.m.; last tour begins at 3:40. For further information: (818) 242-7447.

Casa Adobe de San Rafael, 1330 Dorothy Drive, Glendale. Free docent-guided tours on the first Sunday of every month, from 1 p.m. - 3 p.m. Presented by Glendale Beautiful.

MEMBERSHIP

Membership in The Glendale Historical Society is open to all persons interested in learning about, promoting, and preserving Glendale's history. Members receive quarterly newsletters, announcements of events, discounts on TGHS tours, and the opportunity to work on a variety of projects. Annual dues are \$20 Individual, \$30 Family/Dual, \$35 Small Business, \$50 Sustaining, \$10 Student/Senior, \$25 Non-Profit Organization, and \$100 Corporate.

General meetings are held monthly (except July, August and December) at 7:30 p.m. on the first Wednesday of the month, in the Carillon Room, Glendale Federal Bank, 401 North Brand Boulevard. Telephone: 818-242-7447.

Membership Application

Name: _____

Address: _____ Zip: _____

Telephone: _____ () New Member () Renewing Member
() Change of Address

I would like to assist in the following area(s):

Education _____ Preservation _____ The Doctors' House _____
Research _____ Graphic Arts/Publications _____ Newsletter _____

Other _____

The Glendale Historical Society
P.O. Box 4173
Glendale, CA 91202

Non-Profit Org. U.S. Postage PAID Glendale, CA Permit No. 1183
--