



The Glendale Historical Society

TGHS QUARTERLY

Volume 16, Number 1

Winter 1995

The Glendale Historical Society Settles Into New Home

As announced in the last issue of *TGHS Quarterly*, The Glendale Historical Society rented office space. Since that date, various members have been working to organize the office and several donations of office furniture, equipment and supplies were received.

TGHS member, Suzanne McKay, facilitated a donation from her employer, TransAmerica Insurance, of office furniture (desks, chairs, file cabinets, and book cases). The only expense to TGHS for this furniture was to have it moved to the office. As most of you know, Suzanne helps TGHS in a variety of ways and her efforts to get us this donation are much appreciated. Thanks to Suzanne and TransAmerica.

Highlights

Docent Tells All	2
President's Message	3
Preservation Update	4
Committees on the Move	6
The Doctors' House Chronicles	7
Hollywood Comes to the Doctors' House	9
Membership Drive Starts	9
And Then There Were None	10
Holiday Party and Fund Raiser	12
Nell Shipman Exhibit	12
Valentines Day Raffle	13
Glendale Union High School	14
Down Memory Lane	15
Calendar	16
TGHS Quarterly Sponsors	17
Membership Update	18
Membership Information	19

In addition to the furniture, there have been several donations of office supplies and equipment, etc. Jean Kohler, Bill Shepherd, Patricia Bates, David Smith and Ellene Mertens donated office supplies, Sid Gordon donated a wall clock (complete with the TGHS logo on the clock's face), Art Fisher donated a large thermos for use at office functions, and most recently an anonymous TGHS member gave us a computer and printer.

On Saturday, November 12, members of the TGHS Office Committee had a work party at the new TGHS office. Several TGHS volunteers spent the morning cleaning, arranging furniture, hanging historic Glendale scene pictures, and other activities. Several other TGHS members stopped by that morning to see the new digs and visit.

TGHS Settles Into New Home - Continued

Also stopping by was *Glendale News Press* columnist Ellen Perry and her husband, Bruce. Ellen gave us a nice write-up in her November 18 column. Thank you Ellen. A second work party was held on December 2 at which TGHS Secretary Caroline Beniasians started to sort materials for identification and filing.

Members who have articles related to Glendale's history, TGHS archival and business records, etc. materials are encouraged to bring these materials to the office so committee members can begin to sort through and catalogue them.

Special thanks goes to the following committee members who have been working on the office set-up: Suzanne McKay, Art Fisher, David Smith, Bob Newcomb, Bill Shepherd, Vi Long, Caroline Beniasians, Gerry Behoteguy, Sid Gordon, Dick Montgomery, Shannon Pedlow, and Pat Bates.

Docent Tells All!!! Reveals Surprising Secrets of the Docent Guild

Art Fisher who started as a docent at the Doctors' House in the Fall of 1993 offers this confession of his experiences as a docent.

Being a Doctors' House Docent can be compared to being a travel guide. Docents take groups on a journey to a place and time most visitors have only either read about or seen in movies or television. A journey through a land (our house) that looks in many ways like a house of today, yet is like nothing we have or live in now. Colors, shapes, sizes, and the wood and fabrics in the house swirl around the visitor -- in contrast to the Doctors' House -- we live in a mono-tone world! Being able to introduce the visitor -- close up -- to these things only occasionally seen in books and film is just one of the pleasures of being a docent.

Are you timid? Are you a naturally reticent person in front of strangers? Don't worry -- act as if you are showing-off your family treasures and keepsakes -- each piece of furniture, each plate, cup and kitchen tool has a story -- being able to share the world of the turn of the century Glendale with others is fun and rewarding -- Glendalians of 1900 are in many ways like us -- only having dressed differently and acquired home furnishings of their time.

Please consider joining the Docent Guild. We are a happy sub-group of the main Society members. We don't bite and have a super Coordinator (Isabelle Meyer). Each docent serves one Sunday afternoon a month, or if your schedule permits -- possibly during the week hosting special tour groups. And men -- don't think that the docents aren't for you -- there are currently 5 male docents and we enjoy all the time we can get with the charming lady docents.

For information about joining the Doctors' House Docent Guild please contact Isabelle Meyer at (818) 242-4290.



The President's Message

By William Shepherd

"Glendale's Historical Heritage Continues to be Threatened"

As with each new year, we began 1994 with great anticipation and hope. Many of us started 1994 by celebrating the re-opening of the Alex Theatre. It was a grand party showcasing historic preservation at its finest. However, as much as we hoped, 1994 was not a "banner year" for preservation in Glendale.

Unfortunately there were four prominent assaults against historic Glendale. First, the City's (under the cloak of Redevelopment) desire to raze all of blocks 29 and 30 of the downtown Redevelopment Zone. The plans that will destroy several historic buildings, among them some of the last few remnants of our historic downtown, is unjustifiable.

Can we forget the City's attack on the historic street lamps on Adams Hill? Numerous times the City has promised us and the community-at-large that our historic street lamps will be retained. However, we blinked our eyes for a few minutes and almost lost many fine lamp-posts from this historic area.

More recently we learned of the movement to de-landmark St. Mary's Armenian Apostolic Church (the former First Church of Christ Scientist). I am greatly upset by any attempt to de-landmark such an important building. This must be avoided. What we need are additional buildings put on the list, not buildings taken off the list. If a building was important enough to be put on the original list, why is in suddenly expendable?

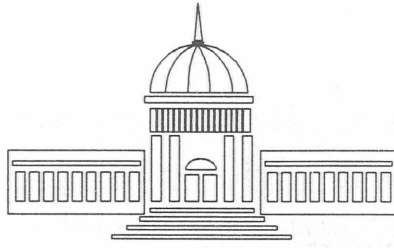
Finally, the City is exploring changes to the Preservation Ordinance which would make it harder to landmark buildings by requiring owner consent. It must be hard enough already to get a structure on the landmark list. Not one new structure has been added to the element since its original creation in 1977.

It is quite sad. The city of Glendale has many interesting historic buildings and features. But, in a rush to create a new Glendale, these historic structures are being destroyed at an alarming rate. We must renew our resolve and be prepared to fight against the above cited proposals.

WARNING!

Bulldozers have been
determined to be hazardous
to historic buildings





Preservation Update

By Andrea Humberger

Redevelopment: Preparation of the Draft Environmental Impact Report is nearly complete for the proposed Glendale Marketplace Project on Blocks 29 and 30 (bound by Harvard, Brand, Broadway, and Louise) in the Redevelopment Area. The project calls for demolition of all buildings on the east side of the 100 block of South Brand. While TGHS supports retention of several structures scheduled for demolition, we are particularly concerned about the Huntley-Evans Building located at 156-158 South Brand Boulevard. The former home of Pendroy Dry Goods and the Famous Department Store, the building is one of the few remaining excellent examples of commercial architecture on Brand Boulevard dating from the 1920s. It was designed by prominent local architect Alfred Priest and built by Roy L. Kent, an important Glendale businessman and civic leader. It was built for William E. Evans and John G. Huntley. Evans was a lawyer, banker, and real estate developer who served as Glendale City Attorney from 1911 to 1921 and as United States Congressman for the Glendale area from 1927 to 1935. Huntley was involved in numerous business pursuits, principally real estate development. For the City to give proper consideration to the building's historic and architectural significance in the planning and environmental review processes, TGHS determined it necessary to seek a determination of eligibility to the National Register of Historic Places. Therefore, TGHS nominated the building for listing in the National Register. A copy of the nomination was submitted to the City on October 31 with our comments on the preparation of the Environmental Impact Report.

Goode House: The official ground breaking was held November 3, 1994 for the Goode House project which will provide affordable housing for handicapped adults around the Goode House which will serve as the recreation center for the complex. Restoration work on the Goode House currently underway includes repair of the floors; rebuilding of the chimney with original bricks; priming of the exterior; and stripping, priming and reinstallation of wood architectural ornaments on the interior and exterior. Construction of subterranean parking and the foundation for the new apartment units is underway. Project completion is scheduled for late summer 1995.



Ground breaking ceremonies for Goode House were held on November 3, 1994. Photo by Andrea Humberger

Glendale Hotel and YMCA: As reported in 1991, the City of Glendale received a matching grant from the State Office of Historic Preservation to prepare National Register nominations for five historic multi-unit residential structures. Nominations were written for the Byram House, Goode House, Glendale Hotel, Maryland Hotel, and YMCA. The nominations were submitted to the State Office of Historic Preservation whose staff determined that the Byram House and Maryland Hotel did not qualify. The Goode House application was put "on hold" pending completion of the current restoration project. The nominations for the Glendale Hotel and YMCA were approved by the State Historic Resources Commission in August 1994. Joining the ranks of Glendale's Main Post Office, Verdugo Adobe, and Derby House, the Glendale Hotel and YMCA were listed in the National Register in November 1994.

WANTED!

REWARD OFFERED!

.....

MORE MEMBERS

.....

The membership is the backbone of the Glendale Historical Society. Without the countless hours of work from our volunteers and the financial support of our members the organization would soon cease to exist. With a larger membership base, TGHS would be a more effective voice for the preservation of our community's heritage.

We are calling on our members to once again support TGHS by helping us launch our Winter membership drive. You can help us by providing:

A list of friends or associates that you believe would be interested in joining us.

Our membership committee will send them a copy of the *TGHS Quarterly*, membership information and an invitation to a special get-acquainted reception.

Or, if you prefer, we will send the information to you so that you can personally present it.

If three of your friends join, you will receive a special thank you gift in addition to the "reward."

To claim your reward, please send your list of names and addresses to:

The Glendale Historical Society
P.O. Box 4173
Glendale, CA 91203

The Reward

The warm fuzzy feeling that comes from helping protect Glendale's heritage.



Committees on the Move

Reports from the TGHS committee chairs

Doctors' House Docent Guild

During two sessions, in October, Merry Franzen and Isabelle Meyer trained a new group of docents. We are happy to welcome four new Doctors' House docents to the Docent Guild: Lilit Bohamyan, Anne Convery, Silvia Fajardo and Dr. Robert Newcomb.

As soon as we concluded the training of the above docent class, three additional prospects revealed themselves. These individuals will be trained soon.

Since we are always in need of additional docents and to replace docents we lose due to moving out of the area, retirement, etc., we will happily add them to the Docent Guild just as soon as we can train them. If you or anyone you know would be interested in becoming a Doctors' House docent, please contact Isabelle Meyer, Docent Coordinator, at (818) 242-4290.

Membership

The Membership Committee recently completed its Fall Membership Drive. Committee members mailed copies of the Fall issue of *TGHS Quarterly* to potential new members whose names were obtained from membership rosters of other local organizations. This mailing was good public relations for TGHS, as *TGHS Quarterly* highlights our varied activities. Potential new members could learn more about TGHS by reading our newsletter than they could

by receiving only a one page invitation letter and a membership brochure.

Many thanks to Richard Montgomery, Irene Maben, Vi Long, Pat Bates, Dorothy Krieger, Doris McKently, David Smith and Daphne Lindstrum for their assistance in the membership drive.

Persons interested in assisting TGHS to increase its membership should contact Phyllis Kenney at (818) 507-6531.

Office Committee

The Office Committee is setting up the new TGHS office. Members will soon begin sorting through the large amount of TGHS materials to set up our archives.

Volunteers to work in the office, on a part time, basis are also needed.

TGHS members who wish to join this committee should call Bill Shepherd at (818) 241-8086.

Preservation Advocacy

The Preservation Advocacy Committee monitors preservation issues in Glendale, attends and speaks on behalf of TGHS at public hearings, provides input to the City of projects impacting vintage and historic buildings, and attends the monthly meetings of the City's Historic Preservation Commission.

We are currently participating in the public process on the proposed project for Blocks 29 and 30 (bound by Harvard, Brand, Broadway, and Louise) of the Redevelopment Area. We are also participating in discussions relating to revisions in the City's preservation policies.

Please contact Andrea Humberger at (818) 957-6927 to get involved with preservation issues.

The Doctors' House Chronicles

This is the third in a continuing series of articles on the people who were important to the Doctors' House and the early days of Glendale.

Dr. David Winslow Hunt

The Second Doctor



David Winslow Hunt's early childhood was spent in southern Illinois. He was physically the image of his mother, Clarrisa Conrad Hunt whose sunny personality he also inherited. Like her, he was of stocky build. His war records reveal that he was only 5'2" tall. He had the fair complexion, hazel eyes, and demanding ethics of the New England Hunts.

During the early days of the Civil War, and in the midst of devastating and prolonged outbreak of malaria in southern Illinois, the Hunt family moved to Minnesota. Winslow, as he was known, supervised his younger brothers in raising cash and provision crops, while their father taught winter school and preached. Winslow was the musical leader in all family entertainment sessions and always subscribed to the best musical quarterly publications of the time.

In March 1865, eighteen year old Winslow left farming and volunteered to enlist as a Private in the Minnesota Artillery. He did this in order to save the father of a large local family from being drafted. Winslow saw only three months duty before the armistice. The eighty acres of land given to him as a soldier's bounty brought \$1,200 cash to finance Winslow's medical school expenses at Ann Arbor.

In early 1870s, following his graduation in Ann Arbor, Winslow married a young Miss Stanton. At the same time he chose Fairmont, Minnesota, as the site for his first medical practice. Mrs. Hunt became seriously ill within a few weeks, and died eight months later. Winslow, a family man, married again. He and his second wife, Alice, became parents of three children. For the next twenty years or so, the Hunt family apparently lived happily in Duran, Wisconsin. The exception was the loss of all their personal property in a fire sometime in the late 1880s.

The late 1890s were years of sadness for the Hunts. In 1895 the eldest daughter Lois died at the age of 20. The next year Mrs. Hunt died and son Leigh became ill. Once more a widower, father of two teenage children, and a seasoned medical practitioner in his 50s, Winslow made a major decision: he would marry Susan Jones Kaler and move west.

Susan had been married to a Dr. Kahler, who died after 3 years of marriage when Susan was 35. Susan's granddaughter, Colleen Cardinale, described this marriage as "a love-match" because Susan spoke of him so fondly in later years. Susan experienced many tragedies in her life, including the death of her parents and a baby sister, all within a 6-month period, when she was a young girl. However, Colleen described Susan as "a strong and cheerful lady."

In 1897 Winslow and Susan were married. Before leaving Minnesota, the Hunt family grew with the addition of baby Dorothy Lois. The Hunts traveled to Colorado and finally to Redlands in Southern California. Leigh Hunt died of tuberculosis during this period, and by the time the family arrived in Glendale in 1900 there were only Winslow, Susan, Mabel (age 23) and little two-year-old Dot. Mabel herself was developing serious tuberculosis and followed her sister and brother in death in July in 1902.

Doctors' House Chronicles - Continued

In January 1901, the Hunts moved to Glendale with the purchase of a medical practice from Dr. Bogue and the 10-year-old Victorian house (the Doctors' House). Dr. Hunt paid cash, taking a \$2,500 trust deed from George Graff to pay for part of the mortgage. The Hunts began to make a place in the little community which was struggling to recover from the hard times of the previous decade. The Hunts joined the Episcopal congregation. They made plans to build or expand and revise the carriage house on the property so the Dr. Hunt could move his office across the yard and out of the house. The structure (or the barn behind it) was fitted to house his automobile, the first within the then-limits of township.

On May 12, 1902, the Glendale Improvement Association was formed with Dr. Hunt as its first chairman and Edgar D. Goode as its first secretary. Dr. Hunt served as chairman until January 1904. Dr. Hunt and the Association secured \$750 in pledges to purchase a site at Brand and Broadway for the town's first high school. They published 10,000 copies of a promotional brochure on Glendale, 2,000 of which were sent to the St. Louis World's Fair in August 1904. The Association backed Leslie Brand and Edgar Goode in their efforts to secure rights-of-ways and financing for the Los Angeles & Glendale Railway Company. The Association dealt with the town's early needs for transportation, telephone service, libraries, trade and water and ultimately brought about the incorporation of the settlement into a city. On February 7, 1906, 120 votes were cast in an election to incorporate Glendale with 75 voting yes, 41 voting no and 4 ballots invalidated. Having achieved its major goals the Association disbanded in 1906.

Numerous newspaper accounts of the 1900s mention D.W. and Susan Hunt who were always prominent in the social and civic life of the area. Susan's work in the early years of the Tuesday Afternoon Club aided in the establishment of the city's first library, opened to the public on February 26, 1906.

Winslow served on the first board of directors of the Bank of Glendale. It was he who suggested the formation and boundaries of the first Glendale high school district. Researchers in the early 1980s found several people who remembered Dr. Hunt. Margaret Byrkit's account tells of being quarantined for scarlet fever while he was serving as the first health officer for Glendale. Lois Duncan Cate remembers him and particularly Mrs Hunt as being "much fun, wonderful company." She recalls that Dr. Hunt always liked the fine apple pies served to him in the Duncan home.

Some of the detailed recollections came to us from Dorothy Gilson Jackson, who was a neighbor to the Hunts and a regular playmate of Dot Hunt from 1901 to 1907. Her description of Dr. Hunt is as a "short and very jovial man, especially fond of children." He dealt with people in a friendly, easy manner. Mrs Hunt was a "proper" woman, and she entertained beautifully. Little Dorothy Hunt was a frail and very sweet child. The Hunts were protective and adoring of their little daughter, who was subject to asthmatic attacks as a child.

In late 1907, Dr. Hunt decided to go to Redlands, transferring his Glendale practice and residence to his friend, young Dr. A.L. Bryant. Winslow had two brothers and aging parents in Riverside County, but he returned to Glendale exactly one year later. At that time Dr. Bryant transferred the house back to Hunt for the purpose of selling it to Leon H. Hurtt. Both Hunt and Bryant then built new residences and continued their friendship. They both continued in practice, and they worked together on local school and library matters.

Doctors' House Chronicles - Continued

Dr. D.W. Hunt died in June 1922 at the age of 76. He was buried in Evergreen Cemetery, where he had buried Mabel and reinterred his earlier Minnesota family. Susan Hunt lived with her daughter until Dorothy's untimely death at the age of 29, and thereafter she assisted her son-in-law in the upbringing of her granddaughter, Colleen, Mrs. Vincent Cardinale of Glendale. Susan lived into the 1940s and died in Glendale at the age of 85.

Hollywood Comes To Doctors' House

by Isabelle Meyer

After two preliminary meetings with staff members of NBC Television, TGHS docents opened the Doctors' House for a day of publicity photographing on November 14, 1994.

For its upcoming television movie *A Woman of Independent Means*, NBC needed an authentically furnished Victorian home to use as a backdrop for publicity photos. The female lead of the movie, Sally Field, and a crew of 18 people spent almost 12 hours at the Doctors' House completing the shoot. For docents, Merry Franzen and Isabelle Meyer, it proved to be a revealing insight into the makings of a TV movie. The docents marveled at the patience required of everyone in a photo session!

The crew was very enthusiastic about the suitability of the Doctors' House for both inside and outside shots and took full advantage of the location. A period writing desk was moved into the parlor to show the main character taking care of her correspondence. The dining room was used for other shots, the master bedroom was turned into a changing room with racks of extra clothing and the kitchen area was used for the catered meals served to everyone. When viewing the film, you will see Sally Field on the

Doctors' House porch holding roses cut from our garden.

The film will be shown on NBC during the upcoming "sweeps week". We have requested copies of some of the pictures and hope to have them on display at our new office in the near future. Keep your eyes open, as you look through the TV program listings, and you may see the Doctors' House, the "real star" (in our subjective eyes) of this upcoming film.

TGHS would like to provide special thanks to NBC's Brenda Hurst (Manager, Print Advertising Photography) for her part in facilitating a \$250 donation from NBC given to TGHS as a thank you for our assistance with the photo session.

Membership Drive Starts With a Bang!

The Fall membership drive got off to a great start when The Waterman Foundation became the first Jewel City Patron of the Glendale Historical Society.

In the Fall of 1994 the Board of Directors established three new membership levels to encourage increased financial support. The new levels are the Jewel City Patron (\$500), Verdugo Patron (\$250) and Tropico Patron (\$100).

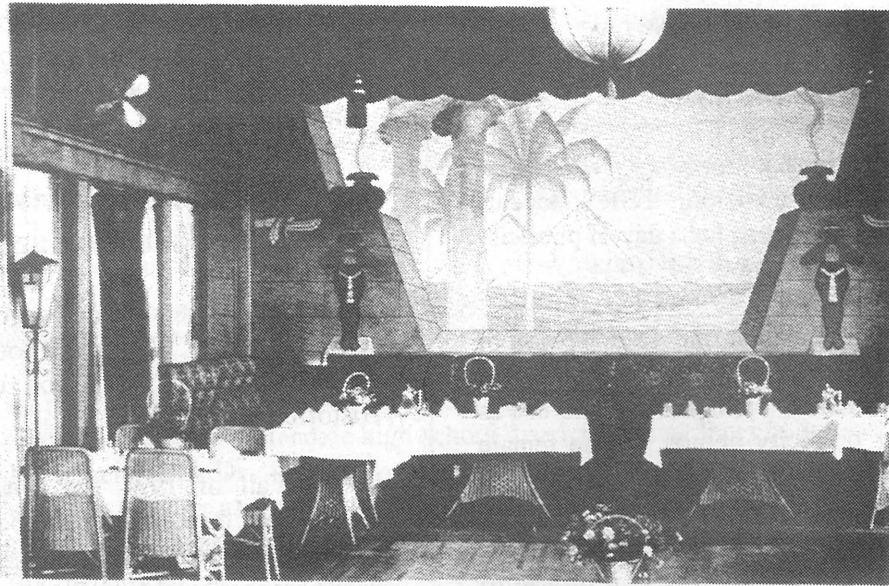
The Waterman Foundation was created by long-time Glendale residents Don & Sallie Waterman prior to their deaths in 1993. A spokesperson for The Waterman Foundation said that "we are happy to help the Glendale Historical Society launch their new office and establishment of the historical archives. We hope our support will encourage other in the community to support the historical society's activities."

TGHS thanks The Waterman Foundation for this generous donation toward the preservation of Glendale's heritage.

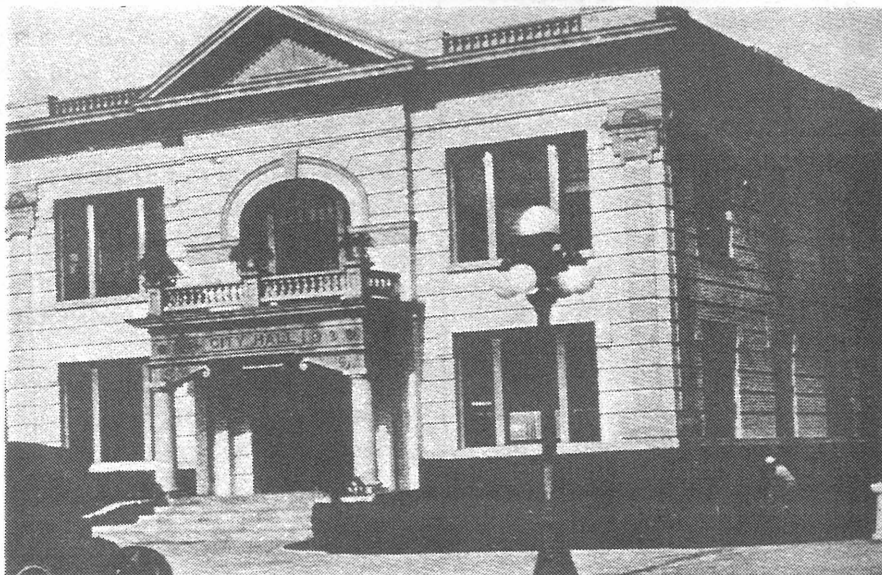
And Then There Were None...

Agatha Christie's great murder mystery *And Then There Were None* had the characters eliminated one at a time until none were left. This is an analogy to the state of historic preservation in Glendale where we see older buildings disappear one by one. Historic buildings are currently threatened by insensitive development, attempts to strip buildings of their landmark status and possible weakening of the preservation ordinance.

The following photographs show buildings that were important to Glendale in the past, but which have been demolished. If we are not successful in our efforts, in the future when the history of Glendale's early days is discussed, an apology may be necessary, because none of the original buildings remain.

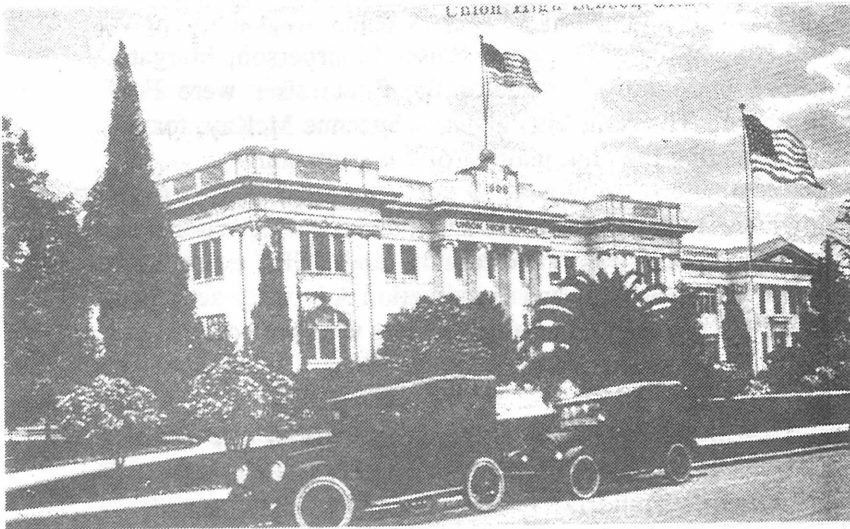


Egyptian Village Cafe - Rare Vintage Interior View

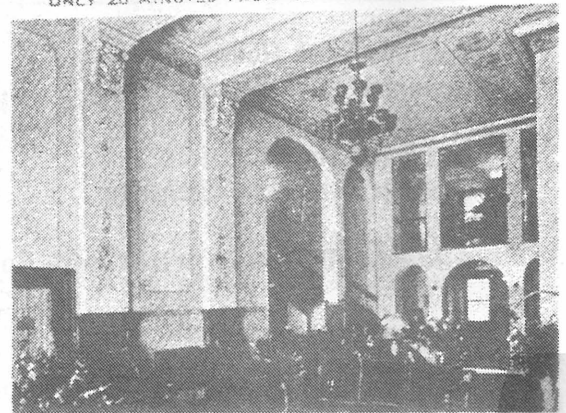
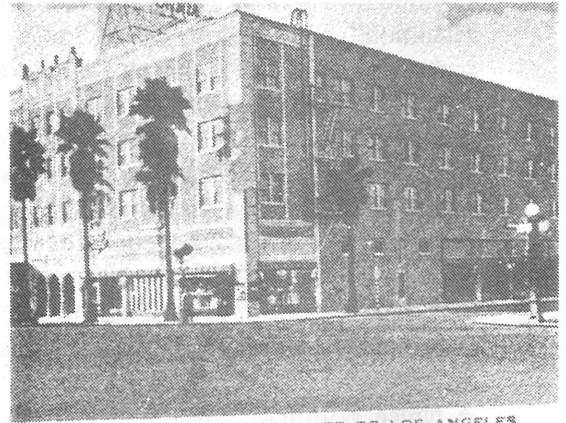


Original Glendale City Hall

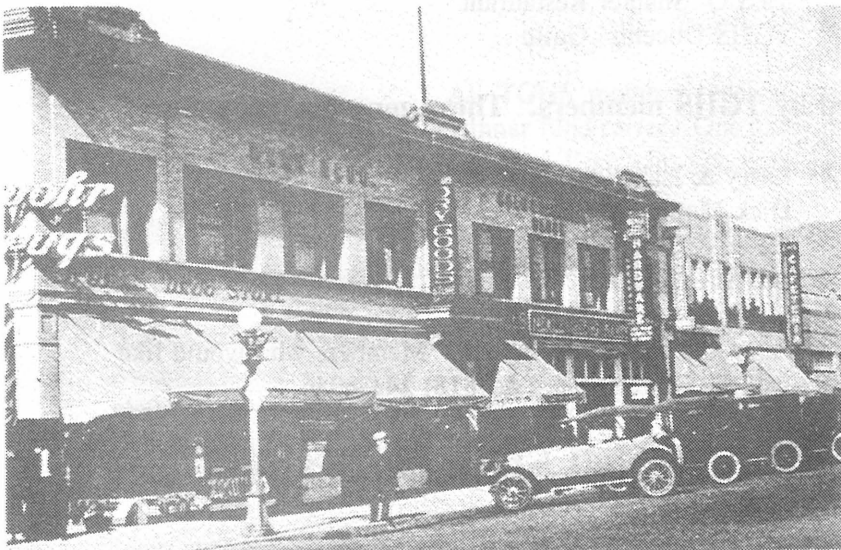
And Then There Were None...



Harvard (Glendale Union) High School



The Hotel California
(Brand and California)



The Northwest Corner of Brand
at Broadway

Photographs are from historic post cards courtesy of Jacqueline Webreck.

Remember - demolition is forever...

TGHS Holiday Party and Fund Raiser

On the evening of December 18, 1994, about 50 TGHS members ate a delicious potluck dinner before enjoying the drawing for the Holiday Raffle prize winners.

Special thanks for organizing the event goes to Holiday Party and Fund Raiser Chairperson, Margaret Hammond. Other TGHS members who helped with the party and/or the fund raiser were Fred Hammond, Sid Gordon, David Smith, Bill Shepherd. Thanks is also given to Suzanne McKay, for the party invitation and Daphane Lindstrum for coordinating the bulk mailing of the invitation.

A big TGHS thank you is given to the following merchants, organizations and individuals for making our 1994 Holiday Fund Raiser a rousing success. Over \$1,200 was raised to help fund TGHS events such as special exhibits at the Doctors' House, our Speakers' Bureau, and Preservation Advocacy activities. All TGHS members are encouraged to patronize those merchants and organizations who helped make our fund raiser successful.

The following local merchants and organizations generously donated prizes to our event:

A Noise Within	Louise's Trattoria
Cinnabar	Olive Garden Restaurant
Damon's Steak House	Scarantino's Italian Restaurant
Dominick's Italian Restaurant	Shakers' Family Restaurant
Framepros	Supercut's (Glendale Avenue)
Glendale Centre Theatre	Tam O' Shanter Restaurant
Glendale Symphony Orchestra	TGHS Docents' Guild

Additionally many prizes were donated by TGHS members. These generous people are:

Wheeler & Frances Doll	Larry & Isabelle Meyer
Frances Ferrin	Dick Montgomery
Art Fisher	Helen & Shannon Pedlow
Doyle Kutch	Bill Shepherd

We need to start plans for next year's Holiday Party and Fund Raiser soon. Members who would like to participate in the planning committee should call the Bill Shepherd at (818) 241-8086.

Another TGHS Success: The Nell Shipman Exhibit

by Terry Richman

The October 1994 Nell Shipman Exhibit was a great success. Over three hundred visitors went through the exhibit during the four Sundays in October. We received excellent newspaper coverage of the event and have sent our thanks to the *Glendale News Press*, *Daily News*, and *Los Angeles Times*.

Among the guests touring the exhibit were Barry Shipman's wife, Beulah, their son and daughter-in-law, two of Nell's great-granddaughters, and Marjorie Walker, the daughter of Nell's first cameraman, Joseph Walker, of later Frank Capra fame.

The Nell Shipman Exhibit - Continued

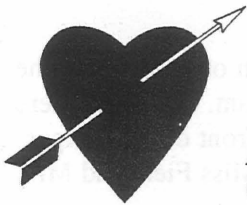
Many people had not heard of Nell Shipman until our exhibit, but some had been fans for years. For example, one woman had seen Shipman's films in England and marveled at the director/star's screen rapport with animals. A doctoral film student at USC had written a paper (now part of our archives) two years ago examining Shipman's unique contributions to film. As a young girl, another guest met Nell in her 60's when she was visiting the woman's uncle. It was an event she never forgot because Nell was still captivating and had a "bigger than life" personality. We also received a visit from a Washington State entrepreneur who is in the process of developing a "Nell Doll" and story book. She spent an entire afternoon taking notes and touring the House.

Perhaps the biggest surprise was how much people enjoyed watching Shipman's movies which we ran continuously (on video) on the side porch. Silent films do not interest many of today's movie-goers, but our guests truly seemed to appreciate the animals' antics, the snowy and desert landscapes and the heroine's adventures. The films and the exhibit allowed people to walk through the past of film making in general and the life of one remarkable woman in particular. As Mrs. Barry Shipman wrote in a note after her visit, "I'm sure Barry and Nell would have been very happy and proud" of the exhibit.

The exhibit materials have been retained and Doctors' House Docent Guild will consider another Nell Shipman exhibit during the next year or two. Special thanks is given to all of those who made the exhibit possible.

Second Annual Valentine's Day Dinner Raffle

by: *Isabelle Meyer*



All TGHS members received tickets, in the mail, for our Valentine's Day Dinner fund raiser. One lucky person will win a dinner for two served at the Doctors' House on February 14, 1995.

La Fontana, an excellent Italian restaurant located on North Brand Boulevard, in Glendale, has generously donated two elaborate meals for this occasion.

A donation of \$5 per ticket (or \$20 for five tickets) is requested to have a chance at the most exciting Sweetheart treat in town. The Docent Guild and Board of Directors hopes to have tickets available elsewhere (such as local merchants), but all TGHS members are encouraged to participate by selling tickets to their friends, business associates, etc. The lucky winner's name will be drawn at the Doctors' House on February 5. The winner need not be present and will be notified by phone.

Your support of this event will be appreciated and will help support TGHS projects, including the varied activities at the Doctors' House. This dinner would not only be a lovely treat for yourself and a loved one, but would also make a great gift for someone who would appreciate a romantic setting.

For information or to order additional tickets, please call Isabelle Meyer at 242-4290.

Glendale Union High School - A History*

In 1901, when Glendale was a small country village and the young people had to go to Los Angeles for a high school education, the residents of Glendale, La Crescenta, Burbank, Eagle Rock, Ivanhoe, Tropic and West Glendale organized the Glendale Union High School in order that the young folks could have equal privileges and chances for learning that those in other cities enjoyed.

The first sessions were held in September 1901, in the former Glendale Sanitarium. Llewellyn Evans was the first principal. There were two teachers and twenty-nine pupils attending.

This was only temporary, however, and bonds were voted for a new building which was build on the corner of what is now Brand Boulevard and Broadway. (At that time, Brand Boulevard had not yet been put through.) George U. Moyse was made principal in that building when it was occupied for the first time in December 1902.

But the rapid growth of the school made another enlargement necessary. On November 9, 1907, a mass meeting of the citizens was called and the trustees were instructed to take the necessary steps to secure a new \$75,000 high school and equipment.

This amount, increased by the sale of the old site, was sufficient to equip and furnish the new building and to improve the grounds and athletic field. In September 1909, the Administration building was occupied for the first time.

The next change came in the summer of 1914. At that time, \$100,000 bonds were voted for the purchase of all property on the west side of Mary (Maryland) Street between Fifth and Sixth (Colorado Boulevard). Maryland Street in this block was vacated and the street and the new frontage became the property of the school. Two new buildings were put up, the Household Arts and Mechanical Arts buildings. These were occupied in the spring of 1915.

The school met the needs of the city adequately until 1920. The enrollment was then over 800. As the Auditorium was build to accommodate 500, the students were again cramped for room. In 1921, there were 1050 students enrolled and five temporary bungalows were put up on the west front of the campus. There were 45 teachers, two of whom had served the school since 1909. They were Miss Field and Mrs. Gibson.

* This history of Glendale Union High School was taken from the school's 1921 *Stylus*. The editors of *TGHS Quarterly* will bring you further Glendale school history in future editions.

Donations to the Archives

Recent donations to the Historical Archives include the following items. We sincerely thank the donors.

Barbara Dobsen Stines --- Copy of Glendale High School graduating class of August 1944 class picture.

Mr. & Mrs Robert Moffitt --- 1950 Wilson Junior High School Class Picture

Ella Mae Schmitt -- Glendale Union High School Student Body Picture 1927 & Crescenta Elementary Student Body Picture 1928.

To make donations to the archives please call the TGHS office at 818-242-7447

Thank You

From the editors to contributors for submitting their articles, and Daphne Lindstrum for mailing the newsletter.

Down Memory Lane

A Journey into the TGHS Archives

"Ads We'd Still Like to See"

Those Who Trade With

H. S. WEBB & CO.

—are sure to receive all the courtesy and personal attention upon which our patronage is based. Our high grade merchandise in Dry Goods and Ladies' Apparel is bound to meet your approval. In connection we have an exclusive shop for men who dress in good taste.

H. S. Webb & Co.

"THE STORE FOR THE PEOPLE"

103-05 South Brand Boulevard

Daniels' Grocery and Meat Market

H. C. Daniels, Prop.

Phone Garvanza 1111

103 E. Colorado Blvd.

Eagle Rock, California

Auto-Lite
Connecticut
Ignition

GLENDALE 5

Official Service for
WILLARD STORAGE
BATTERIES



TRADE MARK REGISTERED

E. W. Cizek Auto Electric Co.
300 South Brand Boulevard, corner Colorado
GLENDALE, CAL.

These ads were copied from the Glendale Union High School 1921 *Stylus*

Calendar



Save
These
Dates

- January 27, 29 Alex Film Society presents *The Wizard of Oz*. Alex Theatre. Tickets \$7.50 for evening showings and \$5.00 for afternoon showing. Contact Alex Film Society for further information (Brian Ellis 213-956-4358).
- February 1
7:30 p.m. February General Meeting - Program to be announced. Carillon Room, Glendale Federal Bank, 401 N Brand Blvd.
- February 5
3:30 p.m. Drawing for TGHS Valentine's Dinner Raffle. Doctor's House Brand Park.
- March 1
7:30 p.m. March General Meeting - Program to be announced. Carillon Room, Glendale Federal Bank, 401 N Brand Blvd.
- March 7
10:00 a.m. Arbor Day Observance - Casa Adobe de San Rafael Park, 1330 Dorothy Drive, Glendale. For more information contact Glendale Beautiful, Gladys Wymore, Chair (818) 246-3634.
- April 5
7:30 p.m. April General Meeting - Program to be announced. Carillon Room, Glendale Federal Bank, 401 N Brand Blvd.
- April 11 Glendale City Council, Glendale Unified School District Board and Glendale Community College Board elections. If you care about Glendale, please vote.
- April 30 Bungalow Heaven Tour - Pasadena. Bungalow Heaven Neighborhood Association. Advance tickets available for \$8 each. Send to BHNA Tour, Box 40672, Pasadena, CA 91114-7672. For information call (818) 585-2172.
- Continuing Sunday's 2:00 p.m. - 4:00 p.m., docent lead tours of the Doctors' House. Brand Park. Last tour begins at 3:40 p.m. Free, but \$1 donation per person encouraged.

Keeping in Touch

Public Meetings: When and Where

**Glendale Redevelopment Agency/
Glendale City Council**
Every Tuesday, 1:30 and 2:00 p.m.
613 E. Broadway - City Hall - Council
Chambers

Historic Preservation Commission
First Monday of the month, 2:00 p.m.
633 E. Broadway - Municipal Services
Building - Room 105

Environmental and Planning Board
Thursdays, 3:30 p.m.
633 E. Broadway - Municipal Services
Building - Room 105

TGHS QUARTERLY SPONSORS

The Glendale Historical Society would like to thank the following businesses for sponsoring this issue of the *TGHS Quarterly*. For information on how to become a co-sponsor of the newsletter please contact David Smith at 818-507-1999 or call TGHS at 818-242-7447.

GROUP SERVICES

Business & Tax Management

KAHREN BENIASIANS

223 So. Brand Blvd., #201
Glendale, CA 91204

Tel: (818) 247-2400
(213) 245-2400
FAX: (818) 247-0216

David L. Smith & Company

Certified Public Accountant

David L. Smith, CPA

Dixon L. Herboldsheimer, CPA

416 N Glendale Ave Ste A
Glendale, CA 91206

818-507-1999
Fax: 818-507-5397

*Please Join Me In
Supporting The
Glendale Historical Society*

RICHARD MONTGOMERY

BAKER FIRE PROTECTION, INC.
Fire Equipment • Sales & Service

Ralph M. Guarino

Fully Licenced, Bonded & Insured
P.O. Box 849, Glendale, CA 91209-0849
(213) 257-6001 • (818) 246-3303 • Pager: (213) 230-9770



Carrier

GEORGE HANEY & SON *Since 1927*
Air Conditioning Contractors

(818) 243-4264 • (213) 245-1514
1104 EAST COLORADO STREET
GLENDALE, CALIFORNIA 91205

GEORGE R. HANEY

LAWRENCE F. MEYER

GREENWALD, HOFFMAN & MEYER
ATTORNEYS AT LAW
500 NORTH BRAND BOULEVARD, SUITE 920
GLENDALE, CALIFORNIA 91203

(818) 507-8100
(213) 381-1131

**Dial
ONE**
**Moyle
Plumbing Co., Inc.**

Allan Howe
President
Corbett Browne
Vice President
Warren Browne
General Manager
Dial (818) 242-6590

616 East Glenoaks Boulevard
Glendale, California 91207

Lic. No. 272932

Each DIAL ONE® Company is Independently Owned and Operated.



Marilyn McGinnis
Owner

(818) 246-5735

Wednesday: 10-5
Thursday & Friday: 10-6
Saturday: 10-5, Sunday: 12-5
Closed Monday-Tuesday

1408 West Kenneth Road • Glendale, California 91201
at Grandview and Kenneth Road

Laughs From Glendale's Past

Spark plug -- "I just got fired today."
Battery -- "That's nothing, I got discharged."

Miss Green --- "Margaret, tell the class which is the best way to keep the March frost from the plants."
Margaret - "Why, plant them in April."

Parcher --- "May I have a pitcher of water on the platform table."
Art --- "To drink?"
Parcher --- "No, to do a high diving act!"

David --- "Was her father violent when you asked for her hand?"
Tom --- "Was he? Great Scott! I thought he would shake my arm off."

Parcher --- "You have a remarkably powerful voice."
Rhodes --- "Do you think it will fill the auditorium?"
Parcher --- "Fill it? Why my dear friend it will empty it!"

Meeker --- "He's a nut, I've known him all my life."
Wise One --- "Birds of a feather flock together."

The above old laughs were taken from the Glendale Union High School yearbook *The Stylus* --1921. The yearbook was a donation to the TGHS archives.

Membership Update

A special welcome to the following new members who have recently joined our organization:

Jewel City Patron
The Waterman Foundation

Corporate
Joyce M. Miller

Small Business
Susan Kirchner - Laskin & Graham

Individual & Family
Doris Biggs
Yvone Bond
Phyllis Cambell
Sally Colegrove
Johnson Connelly
Sally Dumax
Patricia Huber
Virginia Jones
Margaret & Leonard Kaufman
Bob & Jane Kneedler
Mary Lewis
Elizabeth & Jeb Long

A special thanks to the following members who have recently renewed at the Tropico Patron, Sustaining and Small Business levels.

Tropico Patron
Bruce & Valerie Merritt

Sustaining
Howard Anderson
Evelyn Cecere
Arthur Fisher
Andrew J. Thomas
Dave & Erlinda Weaver

Small Business
John E. Neville, DDS
Dr. W. G. Schirmer --- Schirmer Chiropractic Corp.

AN INVITATION TO JOIN THE GLENDALE HISTORICAL SOCIETY

The Glendale Historical Society was formed in 1979 by a group of citizens who banded together to save the Doctors' House from demolition. The Society led the grass roots efforts of the 1980s to relocate the house to Brand Park and to authentically restore and furnish the house to its 19th century appearance. From this beginning, the organization quickly grew and initiated other programs related to the preservation of the heritage of Glendale.

The goals and objectives of the Glendale Historical Society are to:

- Advance the study and appreciation of local history.
- Promote the preservation of structures and sites that are culturally significant for their historical or architectural importance.
- To be an advocate for the identification and evaluation of preservation alternatives.
- To insure the continued public access and enjoyment of the Doctors' House.

The Glendale Historical Society is a non-profit tax-exempt organization and membership is open to men and women of all ages. Members receive the *TGHS Quarterly* newsletter, announcements to all meetings and events, discounts on selected TGHS merchandise and tours. Special membership events include the annual Christmas party, Awards Program, Fall Picnic and Installation Ceremony. New members will receive an initiation to a special welcoming reception. Members joining at the sustaining and higher levels will receive special recognition in the *TGHS Quarterly*.

All new members will receive a copy of the TGHS map *Historic Sites in Glendale, California*.

Membership Application

Annual Dues

- | | |
|--|--|
| <input type="checkbox"/> Jewel City Patron (\$500) | <input type="checkbox"/> Individual (\$20) |
| <input type="checkbox"/> Verdugo Patron (\$250) | <input type="checkbox"/> Individual Senior or Student (\$10) |
| <input type="checkbox"/> Tropico Patron (\$100) | <input type="checkbox"/> Non-Profit Organization (\$25) |
| <input type="checkbox"/> Sustaining (\$50) | <input type="checkbox"/> Small Business (\$35) |
| <input type="checkbox"/> Family/dual (\$30) | <input type="checkbox"/> Corporate (\$100) |

Name

Telephone

Address

City, State & Zip

Please return this form to:
The Glendale Historical Society, P.O. Box 4173, Glendale, CA 91202
For Information Call 818-242-7447

Its our heritage...please join us in saving it

**The Glendale Historical Society
Officers and Directors**

Officers

William Shepherd - *President*
David L. Smith - *Vice-President*
Caroline Beniasians - *Secretary*
Richard Montgomery - *Treasurer*

Directors

Caroline Beniasians
Frances Doll
Margaret Hammond
Phyllis Kenney
Doyle Kutch
Isabelle Meyer
Richard Montgomery
William Shepherd
David L. Smith

TGHS Quarterly Editors

William Shepherd
David Smith

Editorial Deadlines

TGHS Quarterly is published Winter, Spring, Summer and Fall by the Glendale Historical Society.

The editorial deadline for submissions to the Spring issue is February 28 and for the Summer issue the deadline is May 31.

The editors welcome letters and articles relevant to Glendale heritage from members and other interested parties. Please mail to:

The Editors, The Glendale Historical Society,
P.O. Box 4173, Glendale, CA 91202.

The Glendale Historical Society
P.O. Box 4173
Glendale, CA 91202

Non-Profit Org.
U.S. Postage
Paid
Glendale, CA
Permit No.1183