



The Glendale Historical Society

TGHS QUARTERLY

Volume 21, Number 1

Winter 2000

NEW YEAR, NEW CHALLENGES

By: Deborah Dentler, TGHS President

I am honored to be serving as the Historical Society's newly elected President. This will serve as the first in my regular series of messages to our members and friends. I hope that by keeping you well informed of TGHS activities (and giving you a peek at some of the behind-the-scene challenges we face, you too will want to become an even more active member.

The last few months of 1999 presented the board with some unanticipated and difficult challenges. We lost our dear Treasurer of long standing, Dick Montgomery, who passed away last fall. At the same time, the board accepted the resignation of board member Cheryl Witzig, who moved from the area. In December, we accepted the resignation of Preservation Advocacy Chair Andrea Humberger (a former President of TGHS), who announced after many years of devoted service that she wishes to turn her attention to other endeavors (not the least of which is her professional career in the preservation field). Our newsletter editor who has toiled for years producing our quarterly journal, has also expressed interest in finding a successor (any takers, readers?).

Attendance at our events and lectures was down last year, sometimes due to forces beyond our control (chilly weather in August when we had ordered lots of ice cream to sell!). The board will be rethinking the perennial questions of when, where, and what kind of membership meetings and events work best and your input is welcome.

On the "upside" were this year's major accomplishments and our many fun, informative gatherings. In April, we proudly dedicated our Doctors' House gazebo, a community gift resulting from the fundraising efforts of the board and its friends, donations from more than 150 individuals, 14 organizations and clubs, and over a dozen businesses. In July, member Suzanne McKay, who has been serving all year as TGHS' link to the new group, Friends of Historic Adams Square and is our eyes and ears on Glendale's plans for revitalization of that neighborhood, virtually single-handedly organized a massive booth full of photographs and information materials for the Adams Square street faire.

This year also marked the re-opening of the historic Glendale Train Depot and the "reincarnation" of the lovely old Woolworth's Building on Brand Boulevard as "Zany Brainsy." TGHS was involved in both, and we look forward to participating in the just-announced plans by Disney Imagineering to develop a new historical museum or similar new use in the site of the former Grand Central Airport. (Continued on Page 2.)

New Year, New Challenges (Cont'd from Page 1)

We heard from wonderful speakers this year at the monthly lectures organized by Carol Eckert and Robert Newcomb. Among my personal favorites were the talk on mission Indians and a visit from Marlene Hitt, discussing Little Landers and Tujunga. TGHS threw several successful fundraising events, and some just-for-fun bashes, too. Our year ended with a yummy potluck holiday party under candlelight and evergreen boughs.

In a modernizing and efficiency move, the board decided to create new positions, titles, and responsibilities. Margaret Hammond will serve as our new Treasurer. Isabelle Meyer will continue in her long-standing role overseeing the Doctors' House, under the title "Curator." We are now experimenting with having a new paid part-time position for the first time, too. Our new Administrator, Mary Reed, works a few hours each week and she has already made herself invaluable helping with our publicity, paperwork and events. Mary grew up in Glendale, across the street from the Goode House. She is a recent law school grad and a history buff who has authored a few scholarly papers on Glendale history.

Other news this year included the donation of money by the Waterman Foundation to fund the purchase of a new computer for our offices at the Goode House, and word from the estate of Dick Montgomery that TGHS was generously provided for in his will.

We will have a great deal to do in "Y2K." Won't you consider serving on the board, working on local preservation issues, and/or lending a helping hand at the Doctors' House? If you are interested in learning how you can serve, please contact me at my office in Glendale at (818) 547-9390.

I extend a hearty "Happy New Year" to all members and friends of TGHS as we embark our ambitious program of service for the new millennium.

REHAB ASSISTANCE

by Suzanne McKay

Do you love your older home but find that it is uncomfortably costly to maintain? You may qualify for a rehabilitation loan or grant through programs administered by the City of Glendale Community Development and Housing. These programs help homeowners make needed repairs to their homes and also benefit neighborhoods by helping prevent the appearance of blight. Your home does not have to be listed as an historic landmark in order for you to qualify. However, some programs are specifically for seniors, and some are for low to moderate income households. For further details, telephone the Community Development and Housing Department at (818) 548-2060.

Y2K DOCTORS' HOUSE EVENTS

Jan. - Nov. Glendale Public School Display

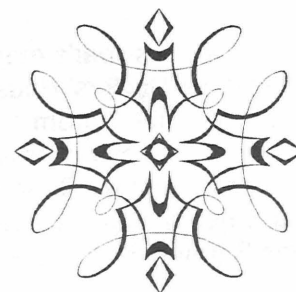
May Doll Sharing Event

Sept. 16 20th Anniversary Celebration of Doctors' House Relocation

Dec. 9 & 16 Candlelight Tours & Bake Sales

Please bring your family and friends back for a visit. Free tours every Sunday from 2 - 4 p.m. (except major holidays and during July). Admission is free, but a \$1 per person donation is recommended to help The Glendale Historical Society maintain the museum.

For museum event and tour information, please call (818) 242-4290.



WAYS TO HELP THE HISTORICAL SOCIETY FOR GENERATIONS

By: Tom Miller

When the late Richard Montgomery joined The Glendale Historical Society (TGHS), with his wife, Natalie, many years ago he realized that the entire point of the Historical Society was to transcend time and offer support to our community about historical preservation. He knew that as the Society grew in size and influence in our community there would be more and more need for contributing funding and more and more competition for charitable contributions. For that reason, he established an endowment fund in honor of his late wife, with the Glendale Community Foundation for the benefit of TGHS.

An "endowment fund" is an invested pool of money with the earnings used for specific or general charitable purposes. The Historical Society Fund receives contributions from people who want the earnings to be used for historical preservation. The 34 year-old Community Foundation invests the donations, insures that the principle amount is never touched and gives the interest earned to TGHS. This guarantees a permanent source of support. In fact, since the first distribution was made in 1994, \$1,400 has been earned and distributed for all kinds of TGHS expenses.

Having now grown to over \$7,350 thanks to donations from several Society members, the fund generates earnings which are distributed each year to the Society to be used for any purpose. Per the immediate past President, David Smith, the earnings check presented in 1999 for \$379 will pay the phone bills for the entire year! Or it could pay for the postage of this newsletter and every bit of correspondence that TGHS mails all year long.

As the fund grows, it could pay for more programs for TGHS. According to Smith, a Certified Public Accountant, all gifts are completely tax deductible and any member who wishes to contribute to the endowment fund is always welcome to make a cash gift and take an income-tax deduction for the full amount. "However, by using the federal tax code, there are many more advantageous ways of making a larger gift than might have been previously anticipated," said Smith.

Those include the donation of appreciated assets like stocks, bonds, mutual funds and real estate; even life insurance policies that are no longer needed. By making a gift of assets that have grown in value over the years, the donor receives an income-tax deduction for the current market value (regardless of how much the asset was originally purchased for), the complete elimination of any capital gains taxes and the reduction of estate taxes. In fact, this is exactly the way Dick Montgomery established the fund. He donated an appreciated bond fund. He says, "I bought this bond many years ago and figured that when it doubled in size, I would donate it and take the tax deduction for the doubled figure."

For more information, call Tom Miller at the Glendale Community Foundation at (818) 241-8040.

A. Spv.

.922 . A

REPORT ON CALIFORNIA ASSOCIATION OF MUSEUMS WORKSHOP

By: Isabelle Meyer

Emily Wargo and I attended a two-day series of workshops in San Pedro geared specially towards management of small museums. We took copious notes and conferred at the end of each day on how to use the acquired information to improve our programs at the Doctors' House. I would like to share with you some of our ideas in the hope that some of you may become interested in helping implement some of these in the future.

We feel that one of our strongest assets is the ability of our docents to show small groups of visitors through our collection. This makes it possible to create a customized tour, based on special interests, time limitations, shared memories and one-on-one interactions. The kind of personal attention is something most museums strive to provide. Thanks to the size of the Doctors' House which makes us limit the number of individuals in each tour group, we have been able to do so. The fact that our donations increase in direct reverse proportion to the size of our tour groups (the smaller the group, the higher the donations!) bears this out.

Our biggest weakness in drawing visitors is the fact that we are somewhat off the beaten path and that even many Glendale residents do not know of us or Brand Park. We must find a way to bring ourselves to the attention of Glendale residents and out-of-town visitors. During the past year, we have been working on several joint events with the Parks & Recreation Department and Brand Library. We would like to create a visitor itinerary that includes the museum on a day-long visit to the area.

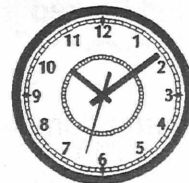
To make the museum more successful, we need additional volunteers. We need to increase the number of tour docents, especially in view of large numbers of school children who will be visiting our Glendale school exhibit this year. Weekday docents are desperately needed. People who do not believe they can or want to guide tours can help us make better use of the Gazebo by serving simple refreshments during tour hours. We need to find people willing to organize this.

Emily is planning to initiate a teenage docent program, where youngsters can get community service credit for docenting at the Doctors' House. More experienced docents would act as mentors to ease their adjustment to new duties.

We must find a way to increase the Society's membership base and get additional financial support for special events and exhibits. Since we cannot charge for tours, additional sources of revenue must be found, either with merchandise sales, special fund raising events or sponsors in the community.

If you have any comments or additional ideas, please share them with me. We want the Doctors' House to become even more successful during the next 20 years of its existence and with your help, we can do so.

Time spent at the Doctors' House is very rewarding!



ADAMS SQUARE A-FAIRE DRAWS APPRECIATIVE CROWD

By: Suzanne McKay

An estimated crowd of over 1,000 attended the Adams Square A-Faire last summer enjoying a day of fun, food and entertainment emphasizing the artistic, historic, and culturally diverse nature of the Adams Hill/Adams Square neighborhood.

Centered around the landmark Art Deco. 1928 Adams Square Building at the "Y" intersection of Chevy Chase, Adams and Park Street, the A-Faire featured arts and crafts vendors, a display of art from the children of John Muir elementary school (depicting their visions for the future of Adams Square), performances by local musicians and students, ethnic food booths, children's activities, exotic and antique cars, and booths representing civic and political groups including The Glendale Historical Society. Our organization also presented a very popular historical display about the Adams Square area and Tropicco. (Tropicco was a small town south of Glendale which annexed itself to Glendale in 1917. It encompassed the area south of what is now Windsor Road.)

Our Glendale Historical Society booth had many visitors who shared their memories, expressed their pride and excitement about the Adams Square/Adams Hill neighborhood, asked questions, etc. A-Faire attendees included a combination of longtime former residents, new residents, and people who were simply curious about the area and wanted to have fun!

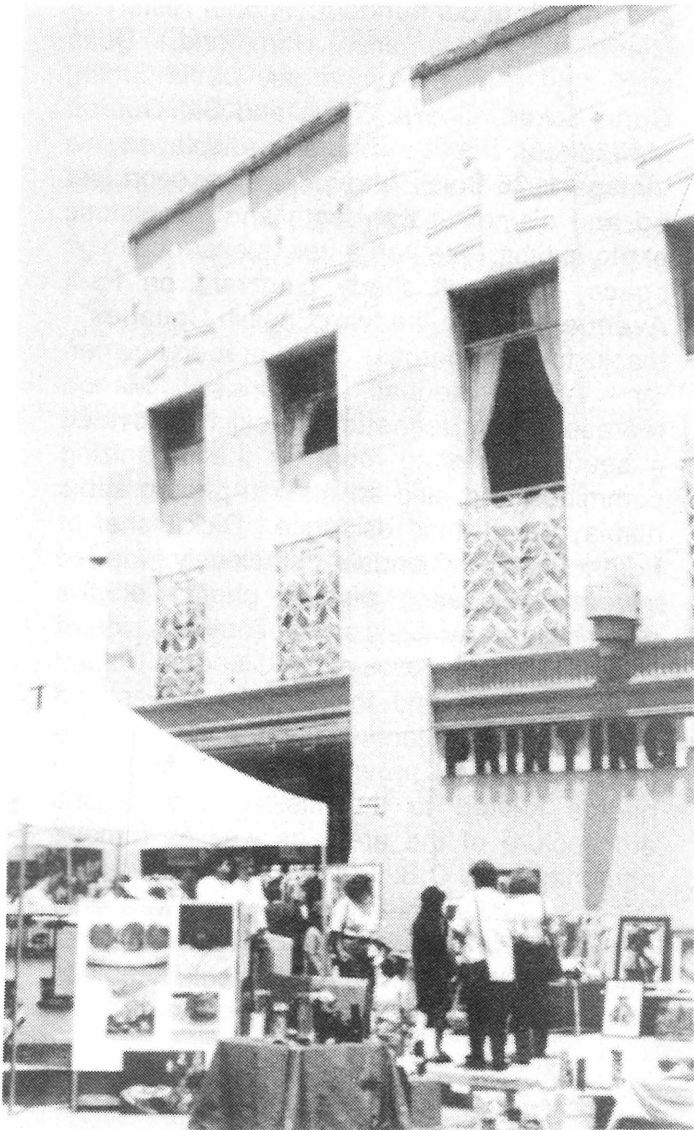
The Adams Square A-Faire was organized and presented in order to promote neighborhood pride and togetherness in an area which great but as yet unrealized potential for becoming a unique, thriving neighborhood of successful and attractive businesses serving the needs and desires of the nearby residents. Following this initial venture with the neighborhood group, Friends of Historic Adams Square (FOHAS).

The Glendale Historical Society will continue to work with them to educate people about the

unique strengths and historic value of this neighborhood in both its work with them to educate people about the unique strengths and historic value of this neighborhood in both its commercial and residential aspects. The City of Glendale (Planing Division, Development Services and Department of Community Development and Housing) is also supporting strengthening the area, and staff are working on a facade improvement grant program and street scape enhancements.

Many thanks to everyone who contributed to the fun and success of the day. Deborah Dentler helped mount the display. Rosemarie Ibanez provided a fresh Spanish translation and printing of our handout, "A Brief History of Glendale." Margaret Hammond, Doris McKently, Connie Humberger, David Smith, Carol Eckert, Cheryl Witzig and Sid Gordon staffed our booth. Sid also displayed his vintage 1936 Buick, and helped transport, set up and dismantle the booth and the historic photo exhibit. We had a very pleasant exhibit space - a small shady courtyard on Park Avenue between the two "English Cottages" - thanks to the generosity of the property owner, Mr. Walter Kendall. Windsor Manor, represented by Jeanette Beurekjian, provided a beautiful meeting room for the organizing committee and also an historic photographic display about their residence. Dick Fisher of Forest Lawn Glendale graciously loaned several fascinating historic photos of the memorial park, which is on the southern side of Adams Hill. Dick Pallos at the Glendale Unified School District and the Special Collections librarians at the Glendale Central Library were most helpful in providing maps, files and photos related to the history and historic architecture of the area, as well as famous personages W.C.B. Richardson and Edward Weston. BJ's Printing Emporium was very generous and helpful with photo reproductions. The Glendale Historical Society will be able to use the history display at future events.

FUN AT ADAMS SQUARE



AN INVITATION TO JOIN THE GLENDALE HISTORICAL SOCIETY

The Glendale Historical Society was formed in 1979 by a group of citizens who banded together to save the Doctors' House from demolition. The Society led the grass roots effort to relocate the house to Brand Park and authentically restore and furnish the house to its 19th century appearance. From this beginning, the organization quickly grew and initiated other programs related to the preservation of the heritage of Glendale.

The goals of the Society are:

- Advance the study and appreciation of local history
- Promote the preservation of structures and sites that are culturally significant for their historical or architectural importance
- To be an advocate for the preservation of historic resources
- To ensure the continued public access and enjoyment of the Doctors' House.

The Glendale Historical Society is a non-profit, tax-exempt organization. Membership is open to all.

MEMBERSHIP APPLICATION

- | | |
|--|--|
| <input type="checkbox"/> Jewel City Patron (\$500) | <input type="checkbox"/> Individual (\$20) |
| <input type="checkbox"/> Verdugo Patron (\$250) | <input type="checkbox"/> Individual Senior or Student (\$10) |
| <input type="checkbox"/> Tropico Patron (\$100) | <input type="checkbox"/> Non-Profit Organization (\$25) |
| <input type="checkbox"/> Sustaining (\$50) | <input type="checkbox"/> Small Business (\$35) |
| <input type="checkbox"/> Family/Dual (\$30) | <input type="checkbox"/> Corporate (\$100) |

Name: _____ Telephone: _____

Address: _____

Please return this form to: The Glendale Historical Society
P.O. Box 4173
Glendale, CA 91202

For additional information call: (818) 242-7447.

TGHS QUARTERLY

Published by The Glendale Historical Society

Board of Directors

Deborah Dentler, President

Emily Wargo, Vice President

Margaret Hammond, Treasurer

Dr. Robert Newcomb, Secretary

David L. Smith, Historian

Isabel Meyer

William Shepherd

TGHS Quarterly Contributors

William Shepherd, Editor

Deborah Dentler, Writer

Suzanne McKay, Writer

Isabelle McKay, Writer

Sid Gordon, Photos

Daphne Lindstrom, Bulk Mailing

THE GLENDALE HISTORICAL SOCIETY
P.O. BOX 4173
GLENDALE, CA 91202

Non-Profit Org
U.S. Postage Paid
Glendale, CA
Permit No. 1183

.42 . A

A. 540.