



## The Glendale Historical Society

# TGHS QUARTERLY

Volume 23, Number 2

Spring 2002



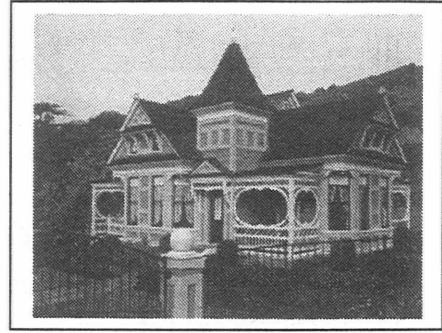
## Wine & Cheese Event at Ard Eevin

On March 10th, over 160 people gathered in the tree shaded entryway of Sally McAller's home in "Cumberland Heights", for wine, cheese, a self guided tour of the restoration work Sally has done to her family's home, and an informational talk about the goals and benefits of creating what would be the *first* historic district in Glendale. There are almost 500 homes within the proposed boundaries of the Cumberland Heights Historic District (bounded by W. Mountain, Kenneth, Grandview and Highland). This is an exciting endeavor and residents have been enthusiastically joining forces in this effort. It's a wonderful chance to get to know your neighbors, exchange restoration tips, see each other's homes as meetings are hosted at various houses, and work on the creation of a neighborhood vision for the district. Over 80 homes within the proposed district are already represented on the petition to create the "Cumberland Heights" district.

*(See photos from the March 10 event and related Historic Districting article inside)*

# Doctors' House Happenings

by Isabelle Meyer, Curator, Doctors' House Museum



## Valentine's Day Dinner Raffle

Mari King and her husband, shown in the photos above, were the winners of the annual Valentine's Day Dinner Raffle at the Doctors' House. Mari learned about the raffle from an article in the News-Press. The dinner was donated by La Fontana Restaurant and served to the lucky winners by Doctors' House Docent, Judy Cabrera and her son. This fundraiser was quite a success, bringing in close to \$1,500 for our continuing educational programs and services at the Doctors' House. Thank you to all who participated in the raffle!

## Current Exhibit

During the month of April 2002 the Doctors' House is exhibiting once again the growing vintage clothing collection of the Fell and White families, both prominent during the early years of the 1900s. Exquisite custom-tailored clothing, fashion accessories and family photos are displayed throughout our Victorian house museum along with a detailed family tree tracing the history of the donors of this wonderful collection.

Tours are available every Sunday from 2-4 p.m. (except Mother's Day). Suggested donation is \$2 for adults, TGHS members are free.

# Historic Districting

by Helen Sipsas



*This photo of Helen in front of her home is from the March 17, 2002 Sunday edition of The Daily News, which featured the TGHS historic districting campaign*

## Campaign for Historic Districts in Glendale Begins with "Cumberland Heights"

Last year, On May 10, 2001, TGHS held a well-attended forum at the Brand Library to discuss preserving the integrity of our historic homes and neighborhoods in Glendale. A number of attendees voiced complaints directed at the City's Planning Department about inappropriate and non-permitted modifications to the defining features of character homes. Attendees also expressed frustration with inconsistencies in the City's Design Review Board's enforcement of design guidelines. In response to these concerns, the Historic Society formed the Historic Districting Committee to explore the creation of historic districts in Glendale, which can provide a method of safeguarding the unique architectural character of our neighborhoods.

Historic Districts have been created throughout Southern California, including 15 districts in Los Angeles and two in Pasadena. These neighboring historic districts provide good models for what can be achieved in Glendale. Both cities have developed conservation plans specific to each neighborhood, which provide clear guidelines and a process to control harmful changes based on the Secretary of Interior's Standard of Rehabilitation of Historic Buildings. The important physical characteristics of the buildings that should be preserved or replaced with material matching the original include original wood windows, exterior doors, original siding, stucco, fireplaces, foundations and roof forms.

While the districts in Los Angeles and Pasadena protect against inappropriate alterations to the exterior of homes, such things as interior modifications, exterior paint color, and changes to the exterior, which cannot be viewed from the streetscape, are excluded. We feel the Glendale historic district movement should also follow this example.

In addition to preserving the architectural character of a neighborhood, historic districts provide other benefits including an enhanced sense of community by working together to create the district and increased property values because potential homebuyers are assured that the historic character that made the neighborhood attractive will endure over time. *(continued on next page)*



The Historic Districting Committee is currently working to create Glendale's first historic district, "Cumberland Heights" in Northwest Glendale. The landmark Ard Eevin estate built in 1902 by Dan Campbell, a prominent Glendale pioneer who owned and developed the majority of the property within the proposed district, will anchor the Cumberland Heights District. Additional historic districts are planned throughout Glendale and include "Castle Heights", just west of Cumberland Heights, "Rossmoyne" and "Adams Hill".

In order to succeed in creating the proposed historic districts in Glendale, we will need considerable support from the community. For instance, while a simple majority approval by residents is required to create historic districts in the overwhelming majority of California cities, Glendale's "Preservation Ordinance" requires an onerous 100% approval, which is near impossible. Strong community interest is necessary to lobby City Council to amend this ordinance. *(Increasing TGHS membership and obtaining petition signatures to change the existing ordinance are our ongoing efforts to create historic districts in Glendale. The next Historic Districting Committee meeting will be held on Thursday, April 18 and 7PM. Please contact Helen Sipsas for location and details or to be added to the Committee's phone and email list: Helen Sipsas at 818-956-0596 or [hsipsas@yahoo.com](mailto:hsipsas@yahoo.com))*

Below, and on the next page are photos of the March 10<sup>th</sup> "Wine and Cheese" event at Ard Eevin:

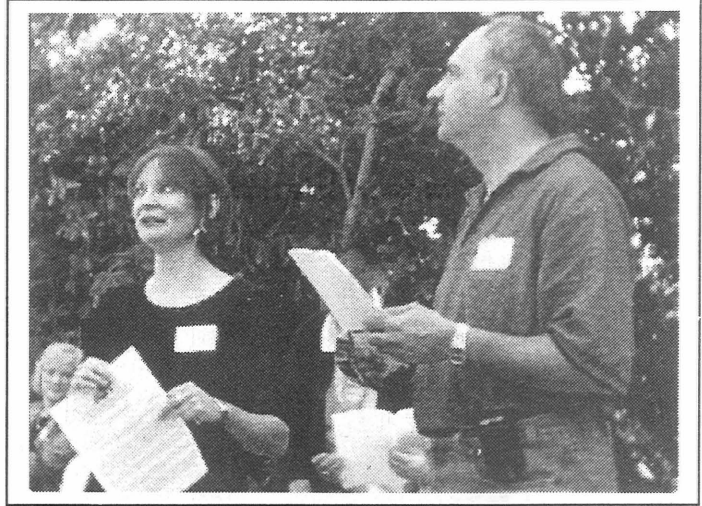
*Photos by Rosemarie Ibañez*



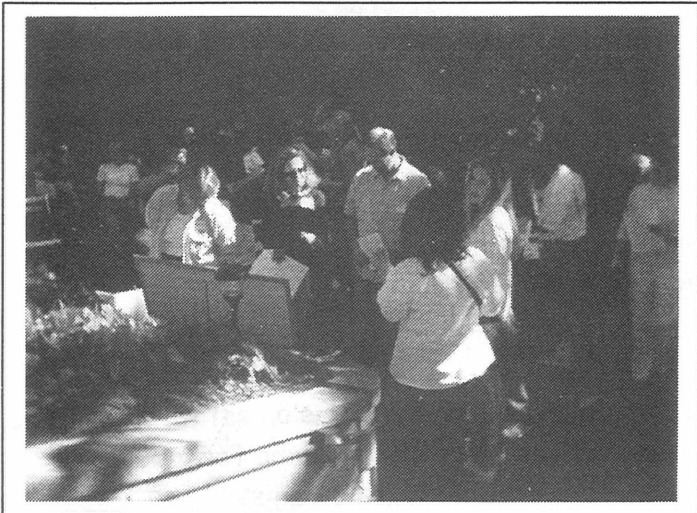
*TGHS banner over the balcony of Ard Eevin*



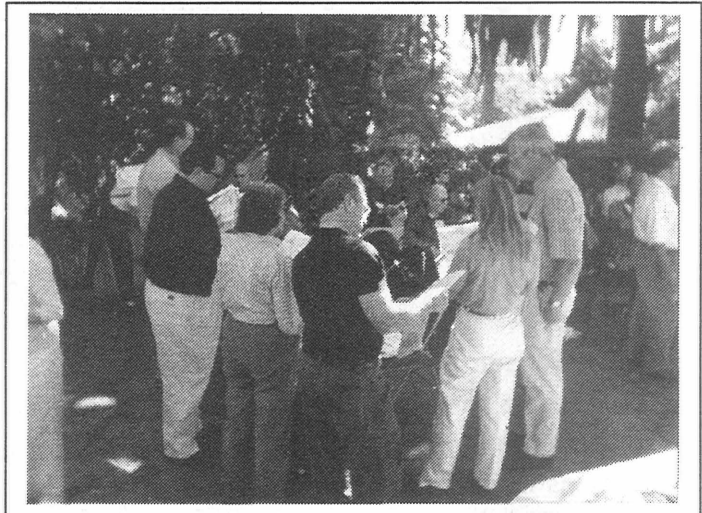
*Entrance to the estate*



*Arlene Vidor, TGHS V-P, briefing Councilman Yousefian*



*Neighbors gathered around "Cumberland Heights" district map*



*Reviewing TGHS information and publications*



*Helen (standing) talking to the crowd*



*Residents listening to the presentation*



# Preservation: Hot Topics

By Arlene Vidor



## "The Jensen House" at 1770 Grandview

The previous owner of this magnificent home passed away and there was an estate sale at the property in March. At the estate sale, it was apparent that the heirs were looking for a buyer as persons interested in purchasing the property were able to put their names on a list.

This house was built in 1926 for Robert Jensen, whose father, Henry, was responsible for Glendale's first theater, The Palace Grand, and the legendary Egyptian Village Café. It has since housed several show business personalities and is the most impressive and conspicuous example of a classic Mediterranean villa in Glendale. The mansion architecture, with its tower, arches and other embellishments, reflects Brand Castle's Islamic elements.

The Society would like for the property to be acquired by the City of Glendale and annexed to Brand Park as, given its size and architecture, it is a conspicuous and impressive Park-adjacent property. City ownership would also prevent inappropriate remodeling, upkeep or usage from a potentially less historic and architecturally sensitive buyer. Its close proximity to Brand Park provides an excellent opportunity to expand arts and cultural services to the community.

TGHS Board Members are planning to meet with City officials to discuss a potential partnership between the two organizations to realize a museum of the City's history. As such, the potential heritage museum could serve as a repository for important historically significant information and artifacts, house the Special Collections owned by both the City Library and the Society, and provide a specialty library on the history of Glendale, its people, and its architecture.

*(If you are interested in helping us work on this issue, please leave a message for Arlene Vidor at 500-7675)*

# Upcoming Events:

## **Teddy Bear Exhibit at the Doctors' House**

On June 2nd, the Jewel City Doll Club will stage a Teddy bear exhibit in the museum from 10 a.m. to 4 p.m. and we hope that many visitors will get to enjoy this one-time display of well-loved and collectible toys. Refreshments will be served.

## **Summer Plays at the Doctors' House**

Two comedies will be performed as outdoor plays using the façade of the Doctors' House this summer (July 5, 6, 12, 14, 19 and 20). The first two performances will be a reprise of last year's "Mornings at Seven" (July 5 and 6) & the second play, the comedy "The Brothers" by Roman comedy writer, Terence, will be performed the last four nights. TGHS will be selling refreshments at the event. FREE. Seating will be available for up to 100 people. Performance time: 7:30PM - 10PM. For information about this and all other events at the Doctors' House, please call Curator Isabelle Meyer at 818-242-4290

## **Backstage Tours of the Alex Theatre**

The Alex Theater presents FREE backstage tours on select Saturdays, which include information about the history, architecture and technical aspects of the theatre. The remaining tours scheduled for 2002 are: June 22, October 5, and December 14.

The tour involves much walking and some stair climbing. Tours last about 2 hours (starting at 10am) and space is limited to 30 people per tour (reservations required). To attend an Alex Theatre tour, contact the Alex Theatre Box Office Manager at (818) 243-7700 x216 or at [boxoffice@alextheatre.org](mailto:boxoffice@alextheatre.org).

### **TGHS QUARTERLY**

*Published by the Glendale  
Historical Society*

Rosemarie Ibañez, Editor  
Daphne Lindstrom, Bulk Mailing

### **Board of Directors**

David L. Smith, President  
Arlene Vidor, Vice-President  
Dr. Robert Newcomb, Secretary  
Margaret Hammond, Treasurer  
Isabelle Meyer

### ***Welcome New Board Members:***

Rosemarie Ibañez  
Vic Pallos  
Helen Sipsas

### **Welcome New TGHS Members!**

Marcy Rose Grimm  
Katherine & Steven Babbit  
Gloria Williams Sander  
Charla Janecek

*If you haven't done so already, check out our website at: [www.glendalehistorical.org](http://www.glendalehistorical.org)*

## AN INVITATION TO JOIN THE GLENDALE HISTORICAL SOCIETY

The Glendale Historical Society invites you to become a member. The Society is a non-profit, tax-exempt organization. Membership is open to all.

- Jewel City Patron (\$500)
- Verdugo Patron (\$250)
- Tropico Patron (\$100)
- Sustaining (\$50)
- Family/Dual (\$30)
- Individual (\$20)
- Individual Senior or Student (\$10)

*The following are welcome to support TGHS as "associated members" without voting rights:*

- Non-Profit (\$25)
- Small Business (\$35)
- Corporate (\$100)

Name \_\_\_\_\_ Phone \_\_\_\_\_  
Address \_\_\_\_\_ Email \_\_\_\_\_

Please return this form to:      The Glendale Historical Society  
P.O. Box 4173  
Glendale, CA 91202

P.O. Box 4173  
Glendale, CA 91202

Nonprofit Organization  
U.S. Postage Paid  
Glendale, CA  
Permit No. 1183