



TGHS QUARTERLY

The Glendale Historical Society

Preserving and Celebrating Glendale's History and Architectural Heritage

TGHS • P.O. Box 4173 • Glendale • CA • (818) 242-7447 • www.glendalehistorical.org

Looking Back on a Year of Accomplishments and Moving Forward to 2003

Wow! 2002 was an exciting year on many levels:

Increased Membership

We experienced an influx of new, architecture loving, preservation-minded members, the largest single year increase in TGHS history. In addition we recruited two new dedicated Board Members Helen Sipsas and Rosemarie Ibanez.

Historic Districting

Hearty congratulations goes out to Helen Sipsas and her Historic Districting Committee for their dazzling achievements in 2002!

The phenomenal grassroots effort started in Cumberland Heights in Northwest Glendale has sparked citywide concern over destruction

of Glendale's period residential architecture prompting a redraft of Glendale's restrictive and outdated Historic Preservation Ordinance. The new ordinance, expected early in 2003, will enable formation of Historic Districts and will be an invaluable tool in the preservation of our historic neighborhoods.

President's Message by Arlene Vidor



An example of early California Spanish Revival architecture found in "Cumberland Heights"

New Local Landmarks

Eight property owners applied successfully for listing on the Glendale Register of Historic Resources. This is the largest number ever registered in a single year and the only new additions since 1987. The surge of new listings was due in large part to TGHS community outreach including development of a "how to" brochure in cooperation with The City of Glendale.

Architectural Tours

TGHS sponsored events at three historic venues, Frank Lloyd Wright Jr.'s "Derby House", Nathaniel Dryden's "Ard Eevin" and the "Broadway Corridor" of modernist architecture. These well attended events received high marks

(Continued on page 2)

Inside this issue:

TGHS 2003 Objectives	2
Derby House Reception	2
2002 Preservation Awards	3
Holiday Bash	5
Drs' House Happenings	6
TGHS Calendar	7
Dr. Newcomb Bequest	7

Soaring Arches, Steel Stilts and Undulating Brick Walls Thrill Tourists of Modernist Glendale

On a balmy October weekend members of TGHS were treated to an exciting journey through Glendale's "Broadway Corridor" of modern civic architecture. The tour "Your Government in Glendale was conducted by Chris Nichols, of the LA Conservancy's Modern Committee. Chris, dressed like a cross between a train conductor and a '50's



The "mod-squad" gathers in front of Glendale's historic City Hall building

(Continued on page 3)

Looking Back, Moving Forward...

(Continued from page 1)

from TGHS members and guests and provided an opportunity to showcase our City's diverse architectural styles.

Supported Adaptive Reuse

We advocated for the preservation and adaptive reuse of Fidelity Federal Building for cultural purposes. The building was designed by the modernist bank architect W.A. Sarmiento in 1956. A group of animation industry professionals are now pursuing funding to develop an animation museum and resource center in that space!

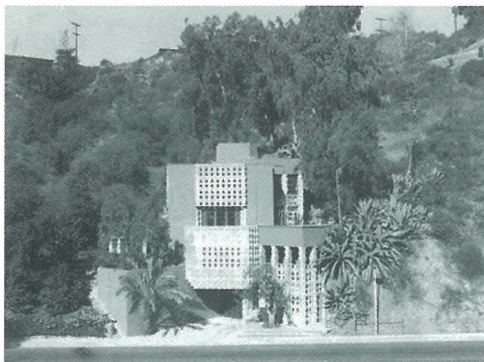
The Board of Directors thank all of you for your continuing support. There is much that we plan to accomplish in 2003 and there will be

many opportunities for our members to get involved in "preserving and celebrating Glendale's history and architectural heritage"

Derby House is Venue for New Member Welcome Reception

Long time members Michael and Carole Dougherty hosted TGHS for a wine and cheese reception at their Chevy Chase Canyon home, "Derby House", to welcome our new members. Their house, named for the first owner, is an architectural masterpiece designed by Lloyd Wright, the son of Frank Lloyd Wright. The Derby House is listed on both the Glendale Register of Historic Resources and The National Register of Historic Places.

Michael, Carole and their daughter Stephanie served as docents escorting guests through the house and garden. Touring the house feels like



The Derby House built in 1929—Lloyd Wright architect

walking through a three dimensional work of art, but with the comforts and informality of a home. The house and its garden were designed by Lloyd to blend naturally within its canyon setting which includes a number of mature blue gum trees.

As a special bonus the Doughertys arranged for Virginia Kazor, M.S., a curator of historic sites for the City of Los Angeles to give a talk on Lloyd Wright's life and work.

In addition to the Derby House, Lloyd Wrights works include the Wayfarers Chapel, the Hollywood Bowl, and consult on his father's Los Angeles masterpiece, Hollyhock House.

* TGHS Objectives for 2003 *

- Significantly increase our membership base.
- Achieve designation of Glendale's first Historic District; continue working on other district candidates.
- Host receptions for our members at Glendale landmarks.
- Outreach to owners of historic structures throughout the city, focusing on Craftsman bungalows and historic apartment buildings.
- Sponsor workshops and literature providing guidance on preserving defining features of Glendale's period architectural styles.
- Advocate for adaptive reuse of historic buildings laying dormant.
- Improve organization and content of the TGHS archives.

TGHS 2002-2003 Officers & Board of Directors

President

Arlene Vidor
avidor@earthlink.net

Vice President

Helen Sipsas
hsipsas@yahoo.com

Secretary

Rosemarie Ibanez
rosemarie_d_ibanez@yahoo.com

Treasurer

Margaret Hammond

Past President

David L. Smith

TGHS Quarterly is the official quarterly newsletter of the Glendale Historical Society, a non-profit community organization.

Contributing Editors

Arlene Vidor
Helen Sipsas
Sally Mac Aller
Rosemarie Ibanez
Emily Williams
Joan Morris

Visit us on the web at:
www.glendalehistorical.org

Write us at:
TGHS
P.O. Box 4173
Glendale, CA 91202

Congratulations to our Six Award Recipients, Recognized in July for Historic Restoration and Local Landmark Listings



Community Bank Building, 100 N. Brand Blvd; Shaul Mezrahi, Owner/Developer, Vickie Barbieri, restoration architect



The restored Community Bank Building

The Community Bank Building graces Brand Blvd with classic style. It was built in 1923 by renown architect Alfred Priest, for The Security Trust and Savings Bank. Mr. Mezrahi, a developer of creativity and vision, acquired the building in 1996 and undertook

The exterior sconces were salvaged from the demolished Robinson's department store

the ambitious task of restoring the faded structure to its 1920s glory.

The Heritage Group, headed by architect Vicki Barbieri, was hired on and rendered the beautiful restoration of this Glendale landmark. The exterior sconces, each weighing 600 pounds were salvaged by Ms. Barbieri from the Robinson's department store on Glendale Avenue during its demolition.



David and Nancy Naylor: Owners of The Wian "Bob's Big Boy" House on Royal Street, Rossmoyne

(Continued on page 4)

Tour of Modernist Glendale...

(Continued from page 1) gas station attendant, held the crowd captive for two hours. There were many stops along the way and Chris unlocked the secrets of the undulating walls of the County Courthouse as well as Glendale's JFK-era Fallout shelter which now serves as an underground headquarters for Glendale's public safety and emergency operations. At the end of the two hour jaunt, tourists were treated to a "retro" food fest in the much admired Municipal Services Building public plaza.



Inside the Fidelity Federal Bank Building





The Osborn Architects Building, a future landmark



Retro drinks

YOUR GOVERNMENT
IN
GLENDALE




 PRESENTED BY
THE GLENDALE HISTORICAL SOCIETY
 P.O. BOX 4173 • GLENDALE, CA • 91202 • 818-242-7447
WWW.GLENDALEHISTORICAL.ORG WWW.MODCON.ORG

Tour booklets, which feature 26 pages of information and photographs can be purchased from the Doctors' House Museum for \$5.00 each or "contact us" on our website, "www.glendalehistorical.org"

2002 Preservation Awards...

(Continued from page 3)



The Naylor's Mediterranean Revival "Big Boy" house

The Naylor's, consultants to the entertainment industry, moved into the house knowing that they had come upon something very special; it was built in 1928 by Robert E. and Cora Wian, parents of Bob's Big Boy founder, Robert C. Wian in the neighborhood originally known as Rossmoyne Estates. Later, the house was home to Steriling Silliphant, Academy Award-winning screenwriter for *In The Heat of The Night*, who also wrote *The Towering Inferno*, and *Poseidon Adventure* screenplays, as well as many Perry Mason episodes. The Naylor's had the house listed on the Glendale Register of Historic Resources in 2002.



David Saylor; A Country French Revival in Scholl Canyon.



The front of Saylor's Country French "Compound"

When Los Angeles fireman David Saylor bought this property he set out to ensure the preservation of Glendale's only brick home in the

Country French Revival style.

The house was built in 1928 by Curtis. It contains a "compound" of several structures including the main 2-story brick house, with a high gabled roof, three dormers and a 30 ft chimney. There is also a guest house on the property, a detached garage including a very unique "out building", that was

The "out building" was used to hang game hunted in the local mountains

used to smoke and hang game hunted in the local mountains. The hooks in the ceiling for hanging game have survived to this day.

The house has it's original pedestal sinks, water closets, tile, cabinets, mantels, flooring and the meticulous restoration continues. Mr. Saylor had the house listed on The Glendale Register of Historic Resources in 2002.



John and Betty Albu; A 1920s Spanish Castle in historic Adams Hill



The Albu's castle in Adams Hill

The Albus snapped up this 1927 Spanish Revival house in Adams Hill 16 years ago because its castle like battlement lookout, arching windows, and terraced pine and cypress-laden mountain gar-

den reminded them of their native Hungary.

The Albu's considered registering their house after attending a TGHS preservation forum

The idea to have the house listed on the Glendale Register came to them after attending the TGHS-sponsored Public Forum on Preservation of Character Homes in May 2001. The Albus have added Spanish tiles to the fireplace and stairs, while the fixtures, wood floors, and windows are original.

These exemplary architectural details are among those that qualified the house for landmark status. The Albus are both retired from the fashion industry and are now popular Hollywood extras, having appeared in over 100 films.



Robert Bush and Mary Sheer: Preservation of a Craftsman Era Home



The Bush's are restoring this Craftsman gem

When Robert Bush and Mary Sheer acquired their 1916 Craftsman bungalow on N. Louise St they recognized that it represents an important era in Glendale's early development. Unfortunately, this particular style of house has almost been architecturally oblit-

(Continued on page 5)

(Continued from page 4)

erated, either by demolition or inappropriate siding or stuccoing.

Robert and Mary have committed themselves to a faithful restoration of the house with its wrap-around porch and earthy shingles. The Craftsman style evokes the Prairie School of architecture made famous by Frank Lloyd Wright. Glendale, at one time, had many more of these gems, most of which predate the 1920s.

A L.A. Daily News article last year featured the couple's efforts to restore and preserve the house. Subsequently, they had it listed on The Glendale Register of Historic Resources.



Sally Mac Aller; Ard Eevin House in the proposed "Cumberland Heights Historic District"



Side view of "Ard Eevin"

(see the story below on Sally and the Ard Eevin House)

TGHS Wraps up the Year with a Holiday Bash at the Historic Ard Eevin House

You've read *Mildred Pierce* by James Cain, right? We have our own family saga of speculation in the Glendale real estate boom of the early 20th Century in the family of Dan Campbell. Mr. Campbell was, as L.C. Brand's business partner, a major developer and banker who spurred on one of Glendale's biggest growth eras. Campbell, who emigrated from Ireland to the goldfields of The Klondike to seek his fortune, gave his house a Gaelic name, "Ard Eevin", which means either Beautiful Heights or Heavenly View, depending on your interpretation of Gaelic.

"Ard Eevin" house celebrated its 100th birthday in 2002

This year, 100 years after its construction, Ard Eevin has joined other prominent properties on The Glendale Register of Historic Resources.

Sally MacAller, Campbells grand-niece and owner of Ard Eevin is an artist, part time teacher and an entertainer extraordinaire. She graciously hosted over 100 guests for a lavish celebration of wine and terrific food.



Hostess, Sally Mac Aller,

Guests also had a chance to appreciate the beautiful restoration in progress on this unique West Indies Plantation style house, which was designed by Nathaniel Dryden, architect of the Brand Castle (now Brand Library).



Members dine on a scrumptious feast



Conversing around the crudites



Welcome to the TGHS Holiday bash at Ard Eevin



Party goers enjoying themselves

Doctors' House Happenings

Halloween, Victorian Style

In October, Docents Brooke Applegate and Jenny Ruiz produced the first ever Halloween tour of the Doctors' House. The tour included examples of many weird and wonderful customs of the typical Victorian Halloween including various fortune telling games. A large turnout enjoyed this event and the month culminated in a Halloween Party on October 26th.

Pictured, right, is Sid Gordon a longtime member of TGHS dressed as a troll. Sid should know what a troll looks like — he has a collection of over 1500 troll dolls and has almost made it into the Guinness Book of World Records for the size of this collection. That would be one for the Glendale history books.



Christmas, Victorian Style

The Drs House, graced with votive candles and docents garbed in period costumes, played host to 300 guests for the popular Candlelight Tour on December 7 and 14. Guests were treated to a Christmas tree decked in antique Victorian ornaments, and our talented docents regaled the crowd with music and served sible sweets. Many of the turning from prior years, told us that the Candlelight Tour is now an annual tradition for them. Those attending for the first time were very exuberant and we even had someone get so enthusiastic that they wanted to sign right on to become a docent.

"Candlelight Tour is now an annual Tradition"



Candlelight tour docents

TGHS PHOTO ALBUM

2002 Holiday Bash at Ard Eevin



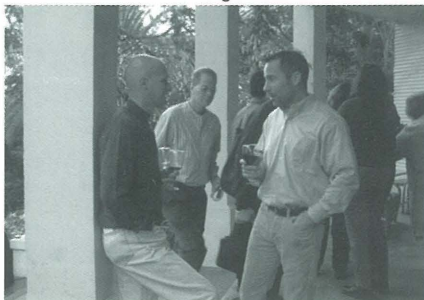
Past president Deborah Dentler and current president Arlene Vidor enjoying the moment



Don Ramirez serving as the bartender



Historic districting committee members celebrating



Mark Taraborelli & Tom Brazil confer on the veranda



Helen Sipsas updating Dennis Greco on our historic districting initiative

TGHS/Community Calendar

Choral concert honoring late TGHS member, Dr. Robert Newcomb. St Marks Episcopal Church, 1020 N. Brand Bvd. Sunday, February 23, 4:00 pm. Information: (818) 240-3860.

California Preservation Foundation ("CPF") Workshop to be hosted in Glendale. "How Do I Know if It's Historic?" Thursday, February 27. Call (510) 763-0972 for info on how to register plus other details or visit www.californiapreservation.org.

CPF Workshop "CEQA and Historic Resources" will be hosted in Glendale, Friday, February 28. Call (510) 763-0972 for info on how to register plus other details or visit www.californiapreservation.org.

LA Conservancy Presentation. "Built By Becket", a Centennial Celebration of the architecture of Welton Becket. Tuesday, March 4, 7:30 pm, at the Cinerama Dome, LA. Go to www.laconservancy.org/events/ to order tickets.

ALERT...between February and April Glendale's Historic Districting Ordinance will be finalized and presented to City Council. Stay tuned for dates and times of public hearings and council meetings. To be added to our "Districting Update" email list, contact Helen Sipsas at hsipsas@yahoo.com.

2003 City Council Candidates Forum

See and hear City Council candidates respond to questions on historic districting and other issues.

Moderated by Will Rogers,
Glendale News-Press Columnist

Thursday, February 27, 6:30 p.m.

Brand Library Auditorium



*Sponsored by the Northwest Glendale
Homeowners Associatio*

Dr. Newcomb Leaves Large Bequest to TGHS Endowment

Dr. Robert Newcomb passed away in April, 2002 at age 75, but his legacy lives on though a \$25,000 bequest to the Glendale Historical Society Endowment Fund.

Born in Caracas Venezuela, Dr. Newcomb was a 40 year Glendale resident and professor of geography for 35 years, teaching at UCLA, Cal State LA and Cal State Northridge.

He was a devoted and active member of TGHS having served many years on the Board of Directors and as a Doctors' House docent. On September 17, 1980 he walked along side The Doctors House on its 4 ¼ mile journey to Brand Park.

The TGHS Endowment Fund was established in 1993 at The Glendale Community Foundation by the late Dick Montgomery in 1993. Since that time, other TGHS members have made tax-deductible contributions to more than double the value of the

endowment. Since 1993, over \$3,000 in earnings has been drawn off the fund to support TGHS programs. For further information about the TGHS Endowment Fund, please contact Tom Miller, Director of the Glendale Community Foundation at 818-241-8040.



Dr. Newcomb at the Drs' House

TGHS thanks the following new
and renewing members
(*new members)

Tropico Patron

Art & Gerri Cragnotti
Arlene Vidor

Sustaining

Howard D. Anderson
Bill & Sydney Bennett
Ruth Priest
Robert & Sharon Thompson

Members

Jennifer & Royal Barber
Patricia L. Bates
Alan Bethanis*
Robert Bush*
Derek M. Catao Jr.
Evelyn Cecere
Kathleen L. Cooke*
Sylvia & Michael Dickerson
Amiee Dobbs*
L. Eugene Dudley
Dennis Fosdick*
Maria Teresa Garcia *
Dr. Ray Galloway
Adeline Green
Viora Grunewald
Elizabeth Hickman*
Terrance Hines
Connie Humberger
Howard Jacobson*
Michael Klem*
Jerod Mark Lazaro*
Richard & Carol Lee
Dorothy M Lehigh
Alan Leib
Sonia and Michael Lent*
Sally Mac Aller
Dr. Ingrid Margolin
Patricia Messina
Mary Miller
David Naylor*
Laurel Patric
Byron & Louise Peebles
Eve Rappaport*
Lila & Rich Ramirez*
Dave Saylor*
Mary Scheer*
Ella Mae Schmitt
Marian Simpson
Mark Taraborelli
Richard Threlkeld
Suzette Trigger*
Mary Underwood*
Connie L. White
Helen Wrede

Visit our website!

www.glendalehistorical.org

JOIN TGHS AND SUPPORT HISTORIC PRESERVATION IN OUR COMMUNITY

The Society is a non-profit, tax exempt organization and we encourage you to join and volunteer

Please make checks payable to:

Glendale Historical Society, P.O. Box 4173, Glendale, CA 91202

Jewel City Patron (\$500)

Verdugo Patron (\$250)

Tropico Patron (\$100)

Sustaining (\$50)

Family/Dual (\$30)

Individual (\$20)

Individual Senior or Student (\$10)

Organizational memberships (without
voting rights)

Non-Profit (\$25)

Small Business (\$35)

Corporate (\$100)

Name _____ Phone _____

Street Address _____ City/Zip _____

Email address _____

Interests: Preservation

Historic Districts

Event Planning

Fundraising

Outreach

Newsletter

Other _____