
The Glendale Historical Society

Preserving and Celebrating Glendale's History and Architectural Heritage Spring 2004

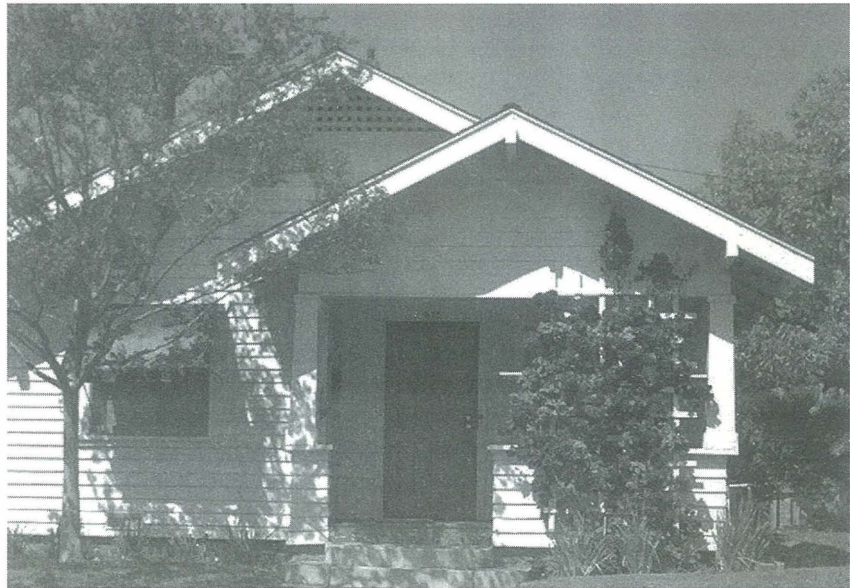
Planning for Glendale's Centennial

by Rosemarie Ibanez

WOULDN'T IT BE wonderful if Glendale's Centennial were celebrated through a combined art space/museum exhibit and meeting rooms dedicated to Glendale's unique past and emerging future?

The Glendale Historical Society thinks it is about time the City had such a place dedicated to bringing together elements that celebrate Glendale's rich heritage and diversity. The City of Glendale owns three craftsman-style bungalows along Cedar Street and Harvard Blvd. for future development as a mini-park. In 2000, when the City first acquired these buildings, the initial intent was to immediately demolish the houses. After objections from Historical Society members, the city delayed their decision until further study of the architectural and historical significance of the buildings. (The demolition ordinance, which passed last year, now makes it a requirement for a study to be done before a demolition permit is issued.) The study has shown that these buildings do have historic architectural elements, and although they may eventually still be demolished, other options must first be considered.

TGHS board members just met with the City's Parks and Recreation staff in February to discuss



City-owned bungalow at 815 Harvard: How best to use it?

possible options for these buildings and to take the idea of the Centennial and possible use of the houses for art exhibit/museum/meeting rooms to them. We had a good first dialogue with Parks and Recreation Director George Chapjian and his staff. They told us that they were also looking at the possibility of saving maybe one house and/or relocation of one or two of the houses, possibly to Brand Park. However the mission of Parks and Recreation is to create parks, not save houses, so direction to save the buildings would have to come from the City Council.

As a follow-up to this meeting, we asked to have a walk-through of the houses in the near future, and to know the timeline of the City for project completion of the mini-park project. TGHS will be talking to members of the arts community, schools and other groups to receive input on the idea. What TGHS

board members presented to City staff at our February meeting follows.

The Diversity Museum:

In concept this would be a place that celebrates Glendale's history, especially the last 30 to 50 years. It would highlight the immigrant

CENTENNIAL continued on page 2

DOCTORS HOUSE MUSEUM

Brand Park
1601 W. Mountain

March & April
each Sunday
2-4 pm

DISPLAYS
Medical Practices
Wakes, Funeral Rites
Cemeteries
Hair Jewelry

\$1.00 donation



The Glendale Historical Society Officers and Board of Directors

PRESIDENT

Arlene Vidor
avidor@earthlink.net

VICE PRESIDENT

Margaret Hammond

SECRETARY

Rosemarie Ibanez
rosemarie_d_ibanez@vahoo.com

TREASURER

Judy Cabrera

BOARD MEMBER

Isabelle Meyer

NEWSLETTER LAYOUT

Carole Dougherty

CONTRIBUTORS

Rosemarie Ibanez
John LoCasio
Isabelle Meyer
Arlene Vidor

Write us at:

TGHS
Post Office Box 4173
Glendale, CA 91202

Visit us on the web at:
www.glendalehistorical.org

The Glendale Historical
Society Quarterly Newsletter
is the official publication of
the Society

CENTENNIAL Continued from page 1

populations that have settled in Glendale. The gallery space would also ensure that there is a continuing dialogue and forum for presentations to showcase the diverse cultures of Glendale's residents. The contents of the museum would include a chronicle of the experiences and stories of individuals who immigrated to Glendale. It would also provide information on the

would make a very visible "presence" of TGHS and our various activities in Glendale. The content of this space would contain the work on an oral history program to capture the experiences of Glendale's citizens, especially the immigration experience (e.g. exploring prejudice, language barriers, and new arrivals from other countries). It would also

Our initial concept says the City needs: A diversity museum, a historical archive and an art gallery

native populations who inhabited the area before European settlement (the Gabrielinos). Other contents would include memorabilia, documents, and photos representing the different ethnic populations of Glendale. The space would also provide a meeting room and place for public to access TGHS archives.

The Art Gallery:

In concept the gallery's purpose would be to celebrate the people, places and events of Glendale. It would be connected to the history museum, and would provide changing exhibits to provide maximum exposure for young artists. All mediums of art would be welcome. This content of the gallery would feature artwork of people who immigrated to Glendale. The gallery would exhibit works of emerging resident artists and local schools would also be involved in the exhibitions. The emphasis of the gallery would be on present history, history "in-the-making."

TGHS Historical Archives:

In concept this space would house reference and research material available to answer questions from the public. It would also offer office space for us as an organization and

contain compiled images with examples of interior and exterior restorations for members and residents who need research materials in restoring their homes. The emphasis would be on first-hand accounts of Glendale history, and local "before" and "after" restorations.

TGHS feels that the Cedar/Harvard Compound is an excellent candidate for this proposal. The heritage-style buildings are linked to distinctive architectural styles of Glendale's early development era. Existing garden space surrounds the buildings, and there would be adequate space for small office, gallery, museum, and archive storage space. The houses are also located in south/central Glendale, where the most need exists for these type of facilities.

The players that we've envisioned for this include: TGHS, a City Council champion, City staff (Parks and Recreation, the Library), Glendale Unified School District, Glendale Community College, representatives from the arts community, community leaders of different ethnic/cultural backgrounds, the Chamber of Commerce.

Let us know what you think of this idea!

HISTORIC DISTRICTING: Preserving Glendale's Future

By John LoCascio

EMPOWERED BY THE historic districting ordinance approved by City Council last spring, neighborhoods across Glendale are mobilizing to preserve their unique character and quality of life. Inspired by enormously successful examples in Los Angeles and Pasadena—Angelino Heights, Carthay Circle, Whitley Heights, Bungalow Heaven, Garfield Heights, Prospect Park, and over a dozen more—these neighborhoods are fighting an epidemic of “remuddles” and mansionization that threatens to destroy their architectural heritage one house at a time.

AT THE FRONT OF THE PACK is Cumberland Heights, where the drive to preserve Glendale's historic residential neighborhoods coalesced several years ago. Led by co-chairpersons Gerri Cragnotti, Sally MacAller and Tammi Relyea, the Cumberland Heights Task Force formally applied last October for recognition and preservation as the city's first Historic District Overlay Zone. Having successfully completed a preliminary Planning Department review and Historic Preservation Commission hearing, the process is now in the public petitioning stage. As this newsletter goes to press, the Task Force is very near to having enough homeowners' signatures to authorize the City to move forward with a historic resources survey of Cumberland Heights and to complete the zoning overlay process, becoming Glendale's first Historic District.

CLOSE ON THE HEELS OF Cumberland Heights is Rossmoyne, one of Glendale's most endangered districts. The picturesque neighborhood developed by Alex Nibley has a huge collection of 1920s period revival homes, as well as a fair sprinkling of Craftsman bungalows from earlier decades. Several are listed on the Glendale Register of Historic Places, but insensitive additions and remodels have ruined many more. The Rossmoyne Historic District Committee recently launched its own web site, www.historicrossmoyme.org, as part

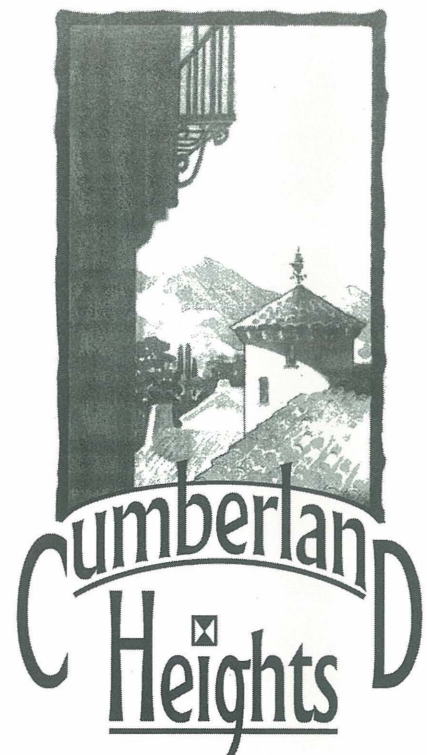
ROSSMOYNE has launched a beautiful “historic district” website. Visit at <http://www.historicrossmoyme.org/>

of its ongoing efforts to inform the community and communicate the benefits of establishing an historic district. If successful, Rossmoyne, with more than 1,300 homes within its boundaries, could become possibly the largest historic district in the United States.

SEVERAL OTHER GLENDALE neighborhoods, among them Adams Hill, the Verdugo Woodlands, Hillcrest, Royal Canyon, El Miradero and Cleveland Knoll, are taking the initial steps to organize committees, establish community support and begin the historic districting process.

ALL OF THESE NEIGHBORHOODS, diverse as they are, share a common goal: to preserve their unique architectural character as a gift to the future, that they may be enjoyed, as they are now, for generations to come.

YOU CAN BE PART OF THIS movement that is sweeping Glendale. If you live in a proposed historic district, get in touch with your local committee, get informed and get involved. Talk to your neighbors about the importance of preserving our residential neighborhoods and about the very many benefits of living in a protected historic district. If your neighborhood is a potential historic district but doesn't yet have a committee, form one; contact TGHS for information and assistance. And, most of all, no matter what neighborhood you live in, voice your support for historic districting to our City Council; the ultimate authority to preserve Glendale's architectural heritage rests in their hands.





Meet
the
TGHS
board



ARLENE VIDOR
Board of Directors
(Current President)

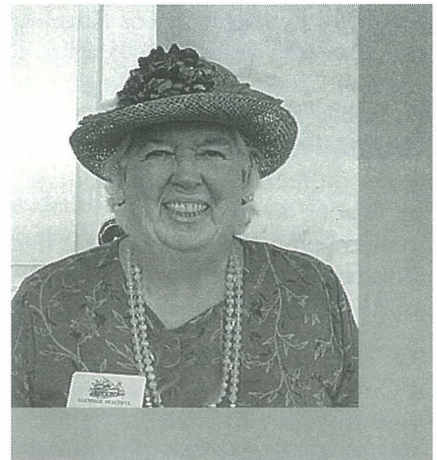
ARLENE IS A NATIVE of the city of Chicago; she grew up in an apartment which is now a mid-century relic. She makes her living as Vice President of Regulatory Affairs at Baxter Healthcare Corporation, headquartered in Westlake Village. She's lived in a "funky" 1926 Adams Hill house since 1991.



"TGHS is fun because it's an outlet for my passion for architecture. I love the fact that Glendale's neighborhoods don't look like cookie-cutter suburban developments—the diverse Revival styles, modernism, little Craftsman bungalows, and old apartment houses are great. A favorite of mine are those concrete pylons holding up the Municipal Services Building."

MARGARET HAMMOND
Board of Directors
(Current Vice President)

MARGARET HAILS from Toronto, Canada and has been a member of TGHS for 25 years. She is very active in many community organizations, including The Assistance League, The Adams Hill Homeowners Association board, and she is the current president of Glendale Beautiful, one of the City's oldest community organizations. Margaret lives on Adams Hill in a Tudor Revival house.



"My favorite landmark is the Glendale train station, which originally was the Tropic station," says Margaret. "In the '80s, the station manager at the time brought it to the attention of the Society and got us involved in its preservation." The station now serves Amtrak and Metrolink passengers.

JUDY CABRERA
Board of Directors
(Current Treasurer)

JUDY CABRERA became a member of the Historical Society when her sister gave her a gift membership for Christmas in 1983. She is an education assistant with the physically handicapped currently working at Balboa Elementary. Judy's husband, Dan, teaches at Glendale High School and is also active in TGHS.



You may have seen him speak on preservation issues before the City Council.

Judy says, "Shortly after joining the Society, I became a docent at the Doctors House. I love showing off the Doctors House and working on exhibits featuring historic themes. Of course, my favorite landmark is the Doctors House."



ROSEMARIE IBANEZ
Board of Directors
(Current Secretary)

For ROSEMARIE IBANEZ historic preservation of the built environment has been an interest even before she received her master's degree from UCLA in 1991. She has been involved in preservation advocacy for Glendale since she moved here in 1996. She is now a senior management analyst in the Fire Prevention Bureau of the Los Angeles Fire Department and works on budget development, fee reports and contracts.

"My favorite Glendale landmark is the Grand Central Air Terminal," Rosemarie says, "because of its significance in early air travel and its importance in the World War II war efforts—not to mention it was featured in classic movies of the '20s and afterwards."



ISABELLE MEYER
Board of Directors and
Curator for The Doctors'
House Museum

ISABELLE HAS BEEN the life force behind the success of the Doctors' House since before its move to Brand Park. She recently took a year off as curator to plan her daughter's wedding and to redecorate her house in Art Deco style.

"Returning to the doctors House after a break feels like going home—only better," she says. Surprisingly Isabelle's favorite landmark is the Egyptian Cafe because, she says, "It represents a landmark lost."



JOHN LOCASCIO
Board of Directors and
Co-chair Rossmoyne
Historic District Committee

JOHN LOCASCIO, a licensed architect specializing in home design, has become very active in Glendale's historic preservation movement over the last year. He is co-chair of the Rossmoyne Historic District Committee and recently joined the Board as TGHS' liaison to and facilitator for the city's several proposed historic districts.

John and his partner David are slowly restoring their 1927 Spanish Colonial home, but his favorite local landmark is the endangered Glendale Federal Bank complex. "It's very unique, very cool, and so evocative of the 1950s," John says. "Walking through the doors is like stepping back in time to an era of great optimism and promise."

PATRICIA MESSINA
Board of Directors and Director of Event Planning

PATRICIA HAS BEEN very active for the last two years in the TGHS Historic District Initiative. She and her husband Terrence, a film director, live in a 1926 Spanish Colonial Revival house in Cumberland Heights; she hosted the first official neighborhood party for the Cumberland Heights historic district initiative. She is by profession a make-up artist for the film and television industry and is currently working on WB's "Reba." She currently serves on the Board of Governors for The Academy of Television Arts and Sciences. Her experience in catering, food preparation and party coordination will certainly aid her in her new role with TGHS.

Patricia says, "Since I'm not familiar with all of Glendale's landmarks, my favorite, right now, is the Doctors House because I have a penchant for Victoriana."

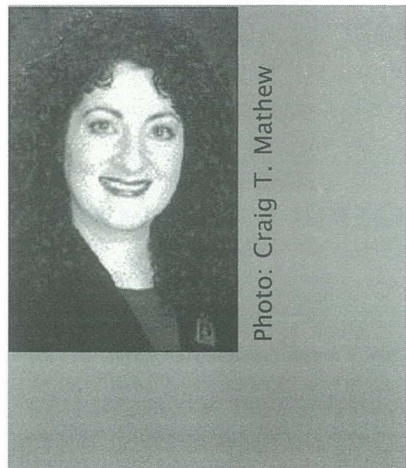


Photo: Craig T. Mathew



Thank you BILL SHEPARD for your generous donation
to the Glendale Community Foundation on behalf of the Society.

Welcome New* and Renewing Members

Please note
that these are new and
renewing memberships
since the last newsletter

VERDUGO PATRON (\$250)

Steven Chapman &
Ricardo Ordoñez*

TROPICO PATRON (\$100)

Terrence Hines &
Patricia Messina
Maria Janossy

SUSTAINING (\$50)

Bill & Sidney Bennett
Mr & Mrs Scott Hayden
(Loretta Chambers)
Anna Rundle

BASIC MEMBERSHIP

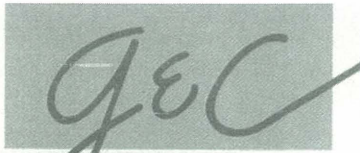
Mary Scheer &
Robert Bush
Norm & Evelyn Cecere
Edwin & Shirley Croft
Shirley Darling
Deborah Dentler
Michael Fedrick*
Marie Fish
Merry Franzen

Richard & Carol Lee
Karen Hentoff &
Koko Lytie
Mary Rose Grim
Karen Lynn Hansen*
Ann Leichtfried
Sally MacAller
Marguerite & Robert Marsh
Doris & Melvin McKently
Mary Miller
Carl & Gail Nelson
Bob & Ann Oliphant
Marilyn Oliver
Michael Resnick*
Robert Seiden
David L Smith
Vincent Takas
Pat Turner &
Louis Lovelace*
Rafael A Vindiola*
Ann & Jerry Wargo
Nancy Newell Wiley*
David & Emily Williams
Elaine Williams
Betty Woodhull*

TO PLACE AN AD

call: 818 246-0508

email: czdougherty@sbcglobal.net



PROPERTIES

www.character-homes.com



GERRI CRAGNOTTI

OWNER/BROKER

bus. (818) 244-5400

fax (818) 244-6290

email: GerriGCRE@aol.com

gerriCragnotti.com

1111 N. BRAND BLVD., SUITE N
GLENDALE, CALIFORNIA 91202

Join The Glendale Historical Society and Support Historic Preservation in Our Community

THE SOCIETY IS A NON-PROFIT, tax exempt organization and we encourage you to join and volunteer. Please complete this form and mail it with a check payable to The Glendale Historical Society, PO Box 4173, Glendale CA 91202

Jewel City Patron (\$500)

Verdugo Patron (\$250)

Tropico Patron (\$100)

Sustaining (\$50)

Family/Dual (\$30)

Individual (\$20)

Individual Senior or Student (\$10)

Organizational Membership
(No voting rights)

Non-Profit (\$25)

Small Business (\$35)

Corporate (\$100)

Name _____ Phone _____

Street Address _____

City/Zip _____ Email Address _____

AREAS OF INTEREST:

Preservation

Fundraising

Doctors House docent

Historic Districts

Outreach

Event Planning

Newsletter

Research Glendale history



news



LEFT: Colleen Cardinale, Dr. D.E. Hunt's grand-daughter celebrates her 80th birthday at the Doctors House gazebo. RIGHT: Karen and Richard Votava enjoy a Valentine lunch served in the dining room of the Doctors House. The lunch is an annual fundraiser and has been provided by La Fontana Restaurant for several years.

ON A SUNNY VALENTINE'S DAY afternoon, members of the Doctors House docent guild celebrated with a special guest: **Colleen Cardinale**, Dr. D.E. Hunt's grand-daughter, returned to the house where her mother lived for seven years in the early 1900s, for an 80th birthday party. The Glendale Historical Society invited all its members to join the docents in presenting Mrs. Cardinale with a mammoth birthday card, an honorary key to the museum, a memorial trivet and a cake made specially by **Porto's Bakery** with an image of the Doctors' House.

Also on hand was **Katherine Yamada**, who alerted our members in an article about the upcoming birthday, allowing us to re-establish contact with Mrs. Cardinale and to invite her and her family to enjoy the festivities. **The News Press** had both a reporter and photographer on hand, and the result was another wonderful article about the descendants of the Hunt family.

It was especially thrilling for the docents to meet the daughter of **Dottie Hunt**—who is an essential part of every tour given—and several generations of the family whom we hope to welcome regularly at the museum in the future.

Long-time member **Sid Gordon** provided music from the '20s to set the mood for a relaxing day in the park.

FOR THE SEVENTH YEAR IN A ROW, a passerby would have seen the gleam of candle light emanating from the dining-room of the Doctors' House on the evening of Valentine's Day.

Thanks to the continuing generosity of **La Fontana Restaurant** in Glendale, the dinner was the result of another successful fundraiser, our Valentine's Day Dinner Raffle, which raised over \$800 for the museum.

This year's lucky winner was **Roberta Walker** who has faithfully supported our raffle for years. It is particularly rewarding for TGHS to see someone win whose support has been steady. Most of those regular supporters are TGHS members, and I would like to thank each one of you who contribute each year.

Mrs. Walker graciously passed along the dinners to her daughter **Karen**, and son-in-law **Richard Votava**, who enjoyed the romantic setting and delicious food. Karen particularly enjoyed seeing pictures of the Glendale schools she attended as a child. A private tour of the museum is a fitting conclusion to a unique evening that shows off our charming house and has made more than one winning couple ask if they couldn't just spend the night!

by Isabelle Meyer, Curator



Glendale Federal Update: by John LoCascio Endangered Landmark May be Reprieved

THE BATTLE TO SAVE THE landmark Glendale Federal Bank complex took a dramatic and promising turn in February when both the city attorney's office and the Historic Preservation Commission recommended the completion of an environmental impact (EIR) report before undertaking any major changes to the building.

On February 23, City Attorney Scott Howard advised the City Council to order the EIR before deciding on the appeals of the nine variances granted Glendale Federal's owner, Nicholson-Vertex Partners, to convert the building's Annex to condominiums. The proposed project would separate the Annex from the Glendale Federal tower and would wrap the building in a stucco facade.

Howard's decision was triggered by a report by the firm of Myra Frank/Jones and Stokes, submitted to the City in January, which concluded that the Annex may qualify as a historical resource under the California Environmental Quality Act.

"Based on the facts that we have today, and the proposals before the City Council, an (environmental impact report) is required," Howard said.

That same day, the Historic Preservation Commission voted 3-1 to rescind its October approval of the proposed project in light of the new information available and unanimously recommended the completion of an environmental impact report. "Had I known then what I have come to learn later, I might have voted differently," said Commission Chairperson Deborah Dentler. "I wanted a chance to repair this and correct our record."

The City Council is tentatively scheduled to continue its hearing of the variance appeal on May 4. The Council is not bound to follow the recommendations of the City Attorney and HPC but, in Howard's opinion, approval of the project would leave the City vulnerable to legal action.

All of us who support historic preservation in Glendale should attend and urge the Council to deny the variances and order an environmental impact report. This is our chance to finally save Glendale Federal, to call for responsible planning and adaptive reuse projects, and to set in motion the changes necessary to revitalize our downtown.

Mark your Calendar!

MARCH MEETING CANCELLED:

Our speaker, Robert Winter cannot make it due to schedule conflicts. We'll try to get him later in the year!

April 13, CITY COUNCIL

AGENDA: Town Center Public Hearing

April 18, "AT HOME WITH

HISTORY" tour of Los Angeles Historic Preservation Overlay Zones (10am-4pm. Sponsored by Los Angeles Conservancy. Visit www.laconservancy.org for info and ticket prices.

April 19, "WHAT TYPE OF

ARCHITECTURE IS MY HOUSE? What should be preserved? Stuart Byles, restoration expert, speaks. Co-sponsored with the **Historical Society of the Crescenta Valley.**

May 4 (tentative), CITY

COUNCIL AGENDA: Glendale Federal Building Annex variance appeal public hearing.

NOTE: City Council Meetings start at 6:00 pm at 613 E. Broadway, 2nd Floor. You can find information on the placement of the agenda item and background reports the Friday before the meeting at www.ci.glendale.ca.us/government/agenda.asp

Non-Profit Org.
U.S. Postage
PAID
Glendale CA
Permit No. 1183

Be sure to visit our website
www.glendalehistorical.org

The Glendale Historical Society
PO Box 4173
Glendale CA 91202