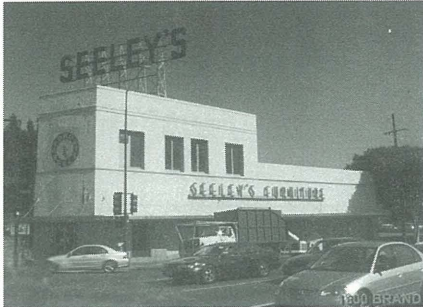


---

# The Glendale Historical Society

Preserving and Celebrating Glendale's History and Architectural Heritage **Spring 2005**

---



Left: Seeley Furniture building, Art Deco-Moderne, 1925 Right: A brick building in the Milford Industrial District.

## The San Fernando Corridor by Arlene Vidor

This under-appreciated area is rich in history and cool buildings

**O**NE AREA OF Glendale that hasn't had much publicity is The San Fernando Corridor. This fascinating mixed industrial/residential area is often ignored as being, well, boring. Not so! A small contingent of Historical Society members and other interested parties has been evaluating the Glendale Redevelopment Agency's (GRA) Reconnaissance Survey of Historic Resources in the 750 acre San Fernando Road Redevelopment area, which borders the railroad tracks from Burbank's to LA's city limits. We have also been communicating with city planning and redevelopment staff to ensure that this area is appropriately appreciated for its diverse period architecture.

THE CORRIDOR was originally a large portion of W.C.B. Richardson's vast Santa Eulalia ranch. The ranch was situated in a district known as "Tropico," an area encompassing much of what is now southern Glendale. Tropico became

a municipality in 1911, resisting absorption into Glendale for seven more years. It was finally annexed to Glendale in 1918. Richardson

**"Architecture is a conversation between generations"**

**Vincent Scully  
Architectural Historian**

raised cattle and fruit trees on Santa Eulalia ranch in the mid- to late 1800s and eventually leased part of his ranchland to Japanese strawberry farmers. Tropico was known for, among other things, its bucolic charms, the Tropico Tile Factory, strawberries, its thriving commercial district on San Fernando Road, and also for being the home of world famous art

photographer, Edward Weston. Richardson leased ranchland to the railroad, paving the way for the Tropico Station to be built. The gorgeous Spanish Colonial station is restored and is now a Glendale and National landmark. Its name was changed to the Southern Pacific Rail Depot after Tropico was annexed to Glendale.

WHEN GLENDALE incorporated the corridor, its growth continued as an industrial area. The GRA's historic survey identifies more than 100 buildings with some level of historic worth. Twelve structures have been surveyed as National Register eligible and will be featured in a future newsletter. There is also a small factory historic district identified at the intersection of Milford and Commercial. One big "hole" in the survey is that it fails to address architecture of the recent past, i.e., those buildings from the mid-20th century modernist era. The city and preservation

CORRIDOR continued on page 6



# President's Message

## Dear Readers,

DID YOU KNOW THAT MAY IS National Historic Preservation Month?

Community participation in historic preservation is growing by leaps and bounds across the USA as our nation ages and our history deepens. The same is true of Glendale as we approach 100 years of incorporation. A growing number of residents are appreciating Glendale's enviable historic fabric, be it the grand Alex Theatre, a tiny vintage gas station, or a neighborhood of Spanish Colonial houses. The amazing thing about our architectural legacy is its vast potential to bind us together—whether it's the Casa Adobe or a street lined with vintage bungalows. In a recent interview, author and historian Wendall Berry was asked "Do we have to be rooted in a place in order to preserve it?" He answered "No, but we need to have settled into it conscientiously as our permanent home. We have to give up the idea of going to a 'better place' to escape our troubles or messes." Boy, could I relate to that, being a mere 15 year resident of California who feels strongly attached to this place I now call home.

In the recent past, our community delivered the message to our elected officials that we revere the *natural environment* enough to prohibit creation of a sprawling megalopolis in the Verdugo Mountains. In the months and years ahead our urban growth boundaries will continue to be challenged as we accommodate a growing population in a city already built-out as far as it can spread. Therefore, it is more important than ever to be mindful of how we protect our *built environment*. Let's



Councilmember **Dave Weaver** presents the Historic Preservation Month Proclamation to HP Commissioner **Beala Neal**



**Arlene Vidor** and Glendale News Press reporter **Robert Chacon** looking at the City Hall display of historic Glendale

carefully consider what is demolished, built and rebuilt and do it with care and sensitivity. As many enlightened cities around the country have learned, it makes good sense to incorporate historic preservation into all our development activities and redevelopment strategy.

With 52 designated landmarks and counting, and a number of neighborhoods being evaluated for historic value, we're on the right track. Let's stay the course and incorporate the beautiful community we love into our future for all generations to appreciate.

Sincerely,

A handwritten signature in dark ink that reads "Arlene Vidor". The signature is written in a cursive style.

## The Glendale Historical Society Officers and Board of Directors

PRESIDENT

Arlene Vidor  
avidor@earthlink.net

VICE PRESIDENT

Margaret Hammond

SECRETARY

Rosemarie Ibanez Barraza  
rib2034@yahoo.com

TREASURER

Judy Cabrera

ACTING MEMBERSHIP CHAIR

Rosemarie Ibanez Barraza

BOARD MEMBERS

John LoCascio  
Patricia Messina  
Isabelle Meyer  
Mike Resnick

NEWSLETTER LAYOUT

Carole Dougherty

CONTRIBUTORS

Rosemarie Ibanez Barraza  
Isabelle Meyer  
Tammi Relyea  
Arlene Vidor

Write us at:

TGHS

Post Office Box 4173  
Glendale, CA 91202

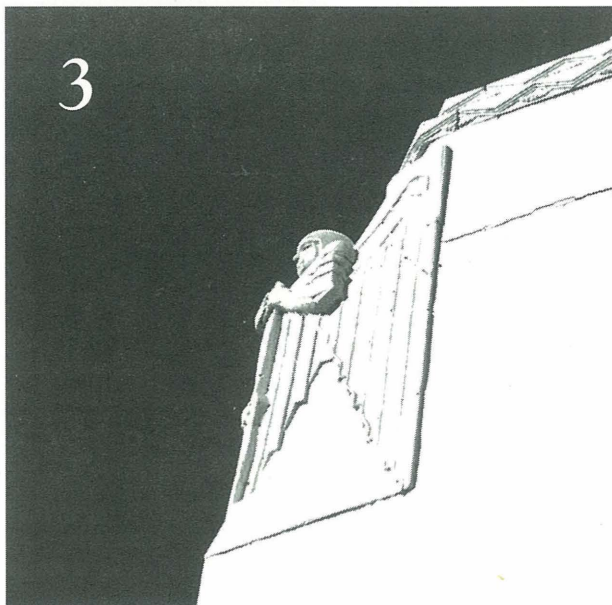
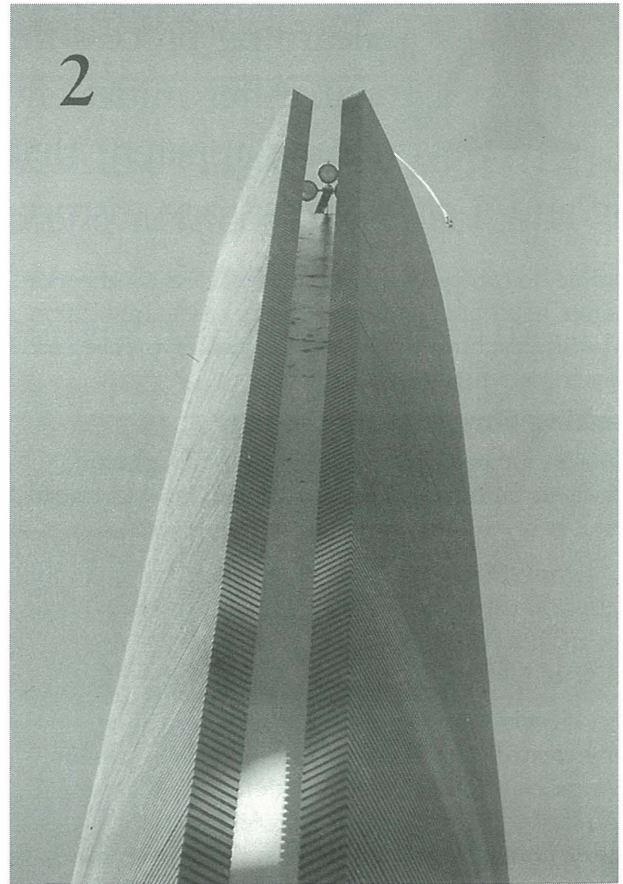
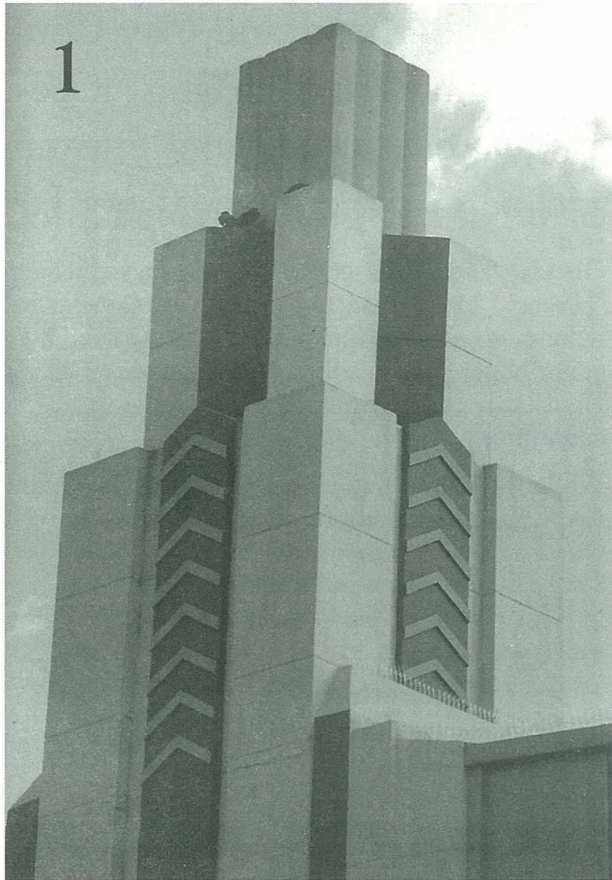
Visit us on the web at:  
[www.glendalehistorical.org](http://www.glendalehistorical.org)

The Glendale Historical  
Society Quarterly Newsletter  
is the official publication of  
the Society



# It's All in the Details . . .

**H**ERE IS THE SECOND IN A SERIES testing your awareness of architectural elements scattered around Glendale. The series and photographs are the brainchild of Doctors' House curator Isabelle Meyer. Do you know where these towers are, what buildings they are attached to? Try to match the tower with the possible answers listed below. Turn to page 6 for the correct answers.



## Glendale's TOWERS

- a. Alex Theater
- b. Forest Lawn
- c. New police station
- d. Adams Square building
- e. Grand Central Airport
- f. Glendale Hilton
- g. Glendale Federal building

Look for the correct answers on page 4



# Cumberland Heights Proponents Regroup, Move Forward

by Tammi Relyea

**T**HE EFFORT TO ESTABLISH a historic district in Cumberland Heights has been a daunting task and learning process for the neighborhood and City Council. After initial efforts in Cumberland Heights, it became apparent that without some procedural fine-tuning and a city-wide historic district guideline in place it would not be

possible to proceed. Consequently, the Cumberland Heights applicants withdrew the pending application and will resubmit when the necessary procedures are adopted further.

## Looking Forward into the Past

Although the process of establishing the first historic districts in Glendale is challenging, we are encouraged by the new working direction.

In August 2004, City Council directed planning staff to develop code changes to implement a new structure. This includes three key changes in the existing processes, as follows:

First, citywide historic district design guidelines are being created. An Advisory Group which includes citywide community representation, City Planning Staff, and the city's consultant, Architectural Resources Group, is meeting to help ARG write the guideline, which will be put before City Council later in the year.

Secondly, before a proposed historic district is formally delineated and put to the vote of area residents, a "study area" would be created for purposes of conducting a historical survey, educating the public, and obtaining input from those in the area.

Finally, creation of historic districts would follow a city-supervised, predictable, transparent and unbiased standardized procedure and timeline, with City Planning staff facilitating the process.

## NW Glendale Heritage Districts Committee

Anticipating Council's actions, a new neighborhood committee in the Northwest area, the Northwest Glendale Heritage Districts Committee, has been formed to create a larger, broadly-based community group to promote historic districts in the Northwest

Glendale area. The group chose to use the term "heritage," rather than historical, in its name as being more meaningful in the broader sense of what the group hopes to accomplish. The Northwest Glendale Homeowner's Association is participating in this new committee.

While the Cumberland Heights neighborhood continues to be in the forefront of historic districting, other Glendale neighborhoods such as Adams Hill, Cleveland Knoll, El Miradero and Rossmoyne all have an interest in this process and are at various stages of historic districting activities.

## Historic Districting Gaining Momentum

Clearly, the movement to establish historic districts is no longer an isolated faction. Historic districts are gaining momentum throughout the region.

It is unfortunate that misinformation continues to circulate about historic districts. It is never easy to be the first to do something and to introduce new neighborhood initiatives. Proponents of historic districting will continue to discuss with interested residents how historic districting benefits everyone and will not be prohibitively restrictive.

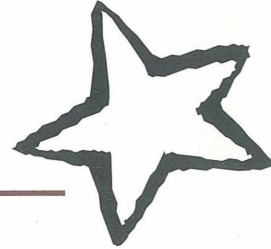
Cumberland Heights and other Glendale neighborhoods are rich in history and architectural style. On the eve of Glendale's Centennial, let's not wait until it's too late to save our neighborhoods from losing their historic fabric, character and "sense of place."

Answers to TOWER test on page 3

- 1: d Adams Square building
- 2: g Glendale Federal building
- 3: e Grand Central Airport

# New Centennial Edition of *Glendale, A Pictorial History* to be Published

IF We Can Get Enough Financial Backing!



THE GLENDALE HISTORICAL SOCIETY is working with The Donning Publishing Company to bring a new edition of the popular *Glendale, A Pictorial History* into distribution for sale starting in our Centennial year, 2006. The current edition chronicles the history of Glendale up through the late 1970s with narrative and captioned photographs.

PHOTO: Glendale News Press



Katherine Yamada, a local historian and society member has graciously agreed to

oversee the update, which includes new information and pictures on Glendale's most recent past and updates of the previous edition.

The Donning Publishing Company does not provide advance money to cover printing and distribution costs, therefore the Society has set about the task of raising \$32,000 advance funding to get the book into

Call  
**Arlene Vidor**  
at  
**818 500-7675**  
with  
**fund-raising**  
**ideas**  
or to  
**contribute**

print by next December.

We will donate space in the book to those who contribute. For a \$3,000 donation we offer a full-page advertisement to the business of the donor.

The seed money will be re-funded to our backers from the proceeds on book sales. The Centennial edition will include an updated book jacket worthy of display on any coffee table.

The offering prices to our members and the general public have not been set yet.

If you or your business wish to provide seed money to this project, please contact Arlene Vidor at 818-500-7675.

Protecting Glendale's architectural heritage and preparing for the  
2006 Glendale Centennial





Harley Davidson building,  
Art Deco, 1927



Davis Glendale Company Market,  
Spanish Baroque clocktower, 1930

community should address this deficiency in collaboration to ensure the survey's validity so misunderstandings do not occur in the future.

Just think of the potential of some of these buildings—they can be great retail spaces, mixed use, artist studios, galleries, museums, factories, residences, and more. We hope that creative developers and entrepreneurs will take advantage of the \$50,000 grants available through GRA's Building Conservation Grant Program for historic and potentially historic buildings in the Corridor. If anyone wishes to get involved in our working group on the San Fernando corridor, please contact Arlene Vidor at 818-500-7675. If you want more information on GRA's historic building preservation incentives contact Dave Ahern/Glendale Redevelopment Agency, at 818-548-3155.

Reference: Reconnaissance Historic Resources Survey of the San Fernando Road Corridor Redevelopment Project Area by Harland Bartholomew & Assoc. (Glendale Redevelopment Agency).

Photos: Marcelle Boudreaux, City Planning Division Intern



**Gene Dudley**  
REALTOR®



**Prudential**

**California Realty**

1300 N. Verdugo Rd., Glendale, CA 91208  
RealEstateByGene@aol.com  
Direct 818 550-3335  
Bus 818 507-4200 Fax 818 242-7542  
An independently owned and operated member of Prudential Real Estate Affiliates, Inc.

**Tri-City**  
Independently Owned and Operated

**Chris Zastrow**

811 N. Central Avenue  
Glendale, California 91203  
Direct: (818) 238-0188  
Fax: (818) 238-9526  
E-mail: cmzastrow@earthlink.net  
Website: www.NorthWestGlendale.com

To place an ad,  
 call: 818 246-0508  
 email: czdougherty@sbcglobal.net

**WE INVITE ANYONE INTERESTED** in working with Glendale third-graders for a couple of hours once a month to contact me about becoming a docent. I promise you lots of fun, unique questions from a child's perspective and the satisfaction of observing children engaged in wholesome old-fashioned fun!

**ISABELLE MEYER, Doctors House Curator · 818 242-4290**

**Join The Glendale Historical Society and Support Historic Preservation in Our Community**

THE SOCIETY IS A NON-PROFIT, tax exempt organization and we encourage you to join and volunteer. Please complete this form and mail it with a check payable to The Glendale Historical Society, PO Box 4173, Glendale CA 91202

- Jewel City Patron (\$500)
- Verdugo Patron \$(250)
- Tropico Patron (\$100)
- Sustaining (\$50)
- Family/Dual (\$30)
- Individual (\$20)
- Individual Senior or Student (\$10)

- Organizational Memberships:**  
(No voting rights)
- Non-Profit (\$25)
  - Small Business (\$35)
  - Corporate (\$100)

Name \_\_\_\_\_ Phone \_\_\_\_\_  
 Street Address \_\_\_\_\_  
 City/Zip \_\_\_\_\_ Email Address \_\_\_\_\_

**CHECK AREAS OF INTEREST:**

- |                      |                    |                           |
|----------------------|--------------------|---------------------------|
| Preservation         | Historic Districts | Event Planning            |
| Fundraising          | Outreach           | Newsletter                |
| Doctors House docent |                    | Research Glendale history |



# Doctors' House news



BOARD MEMBERS of the Glendale Unified School District visited the Doctors' House during the school district's 125th anniversary. *Front row:* Margaret Hammond and Katherine Yamada, friends of the Doctors' House; Arlene Vidor, TGHS president; Dr. Michael Escalante, GUSD superintendent. *Second row:* Merry Franzen, Doctors' House docent; Sherry Stockhamer, Daily High principal; Joylene Wagner, new GUSD board member; Mary Boger, GUSD board president. *Last row:* Isabelle Meyer, Doctors' House curator; Alice Petrossian, assistant superintendent; Pam Ellis, GUSD board member; and Jeff Blyth, GUSD video producer.

**I**N APRIL AND MAY, a special display paid tribute to the Glendale public schools for 125 years of service. Throughout the museum, the development of the school system was shown with growth charts, vintage photographs and artifacts. Also displayed were drawings and letters of thanks from local school-children after seeing parts of Glendale's past on their field trips.

Our school tours continue to be a big draw. We offer hands-on activities—including early laundry handling, and old-fashioned outdoor games—to keep the school tours fresh and memorable.

PHOTO: Mike Resnick



THE DOCTORS' HOUSE in Brand Park is a fine example of the City and the Historical Society working together, preserving a part of Glendale's history and making it accessible to the public.

**F**OR MORE THAN A DECADE, the annual Valentine's Day dinner drawing has raised welcome funds toward the maintenance of the Doctors' House Museum.

Many thanks go to all those who purchased tickets. This year we were especially happy that TGHS member Shirley Hill won the drawing. Shirley and her companion, Joyce, enjoyed a delicious meal provided by La Fontana Restaurant. Candlelight, and French and classical music set the stage for a relaxing evening that concluded with a private tour of the seven-room house museum. Our thanks to La Fontana Restaurant for donating our Valentine dinner for the last ten years.

Most of the tickets were purchased by members and other regular supporters. The \$1,000 we raised allows us to add new artifacts throughout the year and helps to safely store and display our collection.

In April and May we presented an exhibit on Glendale Schools in celebration of Glendale Unified School District's 125 years. In July, we will present weekend plays and in August and September, a popular display featuring Nell Shipman—the Doctors' House celebrity tenant—returns. Save December 10 and 17 for this year's Candlelight Tours.

In addition, we are planning some additional treats. Watch for announcements in the local newspapers as well as this newsletter. Or call curator Isabelle Meyer at 818 242-4290 for more information

TEXT THIS PAGE: Isabelle Meyer



# Mark your Calendar!

HERE'S  
WHAT'S HAPPENING  
AT THE  
DOCTORS HOUSE  
THIS SUMMER

## JULY

Weekend plays

## AUGUST & SEPTEMBER

Exhibits featuring silent film  
star Nell Shipman

Saturday

**AUGUST 20 7-10 PM**

Midsummer Night's Event

## DECEMBER 10 & 17

Candlelight Tours

For more information on  
programs at the Doctors  
House, call Isabelle Myer at  
818 242-4290

## SEPTEMBER 14

Annual Membership Meeting  
Presentation of Awards

## OCTOBER

Look for an announcement  
of an exciting fund-raising  
event

The Glendale Historical Society  
PO Box 4173  
Glendale CA 91202  
[www.glendalehistorical.org](http://www.glendalehistorical.org)

# WANTED!

## Nominations for Annual Awards

The Board of Directors is seeking nominations for persons or groups  
to be recognized for outstanding achievement at our  
Annual Members Meeting on September 14.

Suggestions can include achievements related to  
Glendale history or preservation.

Send suggestions to either our PO Box address or contact us  
through email at [www.glendalehistorical.org](http://www.glendalehistorical.org)



*La Fontana* italian kitchen

"Casual Elegance" In A "Piano Cafe"

933 N. Brand Blvd. Glendale, CA 91202

(818) 247-6256 • Fax (818) 247-74-38

## Urgent Announcement From Our Board of Directors

We need a dedicated Membership Chairperson for TGHS. This critical  
position is responsible for membership renewal, outreach and  
maintaining that all important computer database of our members  
and other mailing lists.

Anyone with enthusiasm and computer savvy, please step forward!  
We'll fill you in on the details. Time is of the essence!