

---

# The Glendale Historical Society

Preserving and Celebrating Glendale's History and Architectural Heritage Winter/Spring 2006

---

## Statement of The Glendale Historical Society on the Proposed Downtown Specific Plan Environmental Impact Report

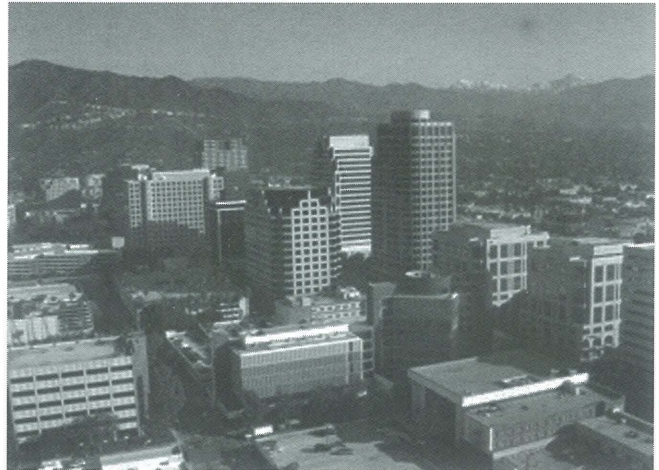
EARLY THIS YEAR, the City solicited public comment on the Downtown Specific Plan, which encompasses most of the central portion of the city from the Glenoaks area on the north to Colorado Street on the south. Board member John LoCascio submitted these comments for The Glendale Historical Society. The approach the City takes to the redevelopment of downtown is very key to the health and vitality of our city. LoCascio's comments call for a strong and consistent preservation strategy—one that will certainly foster commercial success. Arlene Vidor, TGHS president and John LoCascio, an architect and TGHS secretary, will both participate in the City's Downtown Specific Plan Focus Group. If you have any input on this, please send them your comments at [avidor@earthlink.net](mailto:avidor@earthlink.net), [jplarch@earthlink.net](mailto:jplarch@earthlink.net).

**I**F THE PROPOSED Downtown Specific Plan (DSP) is to succeed in its ultimate goal of ensuring the long-term health and vitality of downtown Glendale, it must be built upon a foundation of tried-and-true urban planning principles. The first of these is to determine which buildings of historic or cultural significance must be preserved and incorporated into the redevelopment project.

To that end, the Downtown Specific Plan EIR must include an independent, comprehensive historic resources survey of the entire proposed redevelopment area, as defined by the City map. Each property must be professionally assessed for potential historic or cultural significance, physical condition and eligibility for listing on the local, state or national historic registers, in accordance with the California Environmental Quality Act (CEQA).

**ALTHOUGH THE MUNICIPAL CODE** requires city review for potential historic significance of any building over thirty years old, prior to issuance of a demolition permit, we cannot rely on this process, nor on a piecemeal assemblage of pre-existing surveys or old EIRs, to address the potential impact of the DSP. The Demolition Ordinance is not a substitute for a comprehensive historic resources survey of the entire project area.

**ANY PROPERTY WITHIN** the proposed redevelopment area that is currently designated as a local, state or national landmark, or has been identified as eligible for landmark designation, must be preserved in its entirety



and incorporated into the Downtown Specific Plan. Examples include the **Alex Theater**, which is already listed on the National Register of Historic Places, and the **Glendale Federal Bank tower and annex**, which have been designated as eligible for listing on the State historic register.

**AND FINALLY**, as part and parcel of the Downtown Specific Plan, the City must enact an Adaptive Reuse Ordinance to provide incentives, standards and guidelines for the preservation, restoration and rehabilitation of identified cultural and historic resources within the specific plan area and, indeed, throughout the city.

**WITH THESE TOOLS**—a comprehensive survey of the proposed project area, a firm commitment to incorporate identified historic resources into development plans, and an effective Adaptive Reuse Ordinance providing incentives for appropriate rehabilitation, the City will have a tried-and-true foundation upon which to build the Downtown Specific Plan. We know that such an approach will work; we have only to look at successful downtown revitalization projects in cities all around us to see the evidence. Identifying and preserving our historic resources will provide a revitalized downtown with a much-needed sense of continuity, a physical and visual link to Glendale's past, and a basis upon which to determine appropriate design standards for future development.

**WITH SUCH A FOUNDATION**, the Downtown Specific Plan can indeed enhance the future development and vitality of downtown Glendale.



# President's Message

## Unpermitted window change-outs: An epidemic in Glendale

**H**APPY SPRING, fellow TGHS members. With better weather pending, perhaps you'll be outside walking around and will notice the epidemic of unsightly and unpermitted window changeouts undermining the beauty and architectural character of our City. Although it's been an ongoing issue, the problem seems worse than ever. Never mind the erosion of the monetary value of houses as entire neighborhoods take an aesthetic nosedive. My rights as a homeowner are being violated and so are yours.

If you read John LoCascio's recent newsletter piece on the value of window preservation and the myth of plastic window longevity you already know what it's about. The letter reprinted here recently went to the City of Glendale and the various boards and commissions that serve as gatekeepers of our city's appearance.

**Realtors,  
take note, you  
are in a great  
position to  
educate your  
clients about  
the  
contribution  
window's make  
to the value of  
a house.  
Neighborhood  
homeowner  
associations  
can also do  
much to  
educate  
homeowners.**

Realtors, take note, you are in a great position to educate your clients about the contribution windows make to the value of a house—which, for most of us, is the largest and most significant purchase we will ever make. Neighborhood homeowner associations can also do much to educate homeowners.

We strongly recommend that you call Neighborhood Services at 818-548-3700 if you see unpermitted window modifications. A period home should not be granted a permit for the types of window change outs we are seeing so much of.

On March 30<sup>th</sup>, the City sponsored a joint meeting of Design Review Board #1 and #2 to discuss windows. See the letter in this issue that TGHS sent to

the DRBs addressing our concern.



Arlene Vidor  
March 2006

## The Glendale Historical Society Officers and Board of Directors

PRESIDENT

Arlene Vidor  
avidor@earthlink.net

VICE PRESIDENT

Bruce B Herman  
bbh1122@aol.com

Secretary

John LoCascio

TREASURER

Judy Cabrera

ACTING MEMBERSHIP CHAIR

Rosemarie Barraza

BOARD MEMBERS

Patricia Messina

Isabelle Meyer

Mike Resnick

NEWSLETTER LAYOUT

Carole Dougherty

CONTRIBUTORS

Rosemarie Barraza

Judy Cabrera

Gary Hart

Bruce B Herman

John LoCascio

Isabelle Meyer

Arlene Vidor

Write us at:

TGHS

Post Office Box 4173  
Glendale, CA 91202

Visit us on the web at:  
[www.glendalehistorical.org](http://www.glendalehistorical.org)

The Glendale Historical Society  
Quarterly Newsletter is the  
official publication of the Society



March 30, 2006

Ms. Elaine Wilkerson  
City of Glendale  
Planning Department

Mr. Sam Engel  
City of Glendale  
Neighborhood Services

Mr. Stuart Tom  
City of Glendale  
Building Department

**RE: Window Replacements.**  
**Special Joint Study Session in Planning Department**  
March 30<sup>th</sup>, 9:00 am

Dear Ms. Wilkerson, Mr. Engel, and Mr. Tom,

The issue of unnecessary and inappropriate window replacement has reached the point of crisis in Glendale's residential neighborhoods and we are damaging the character of our neighborhoods.

Fenestration is a key aspect of a building's aesthetic, be it a period structure or new construction. Most of the fine period residences in Glendale derive their character from their windows - their shapes, styles and construction materials, and the relationship of the individual windows to the entire façade. Collectively, the façades create the charm and historic feel that make Glendale's neighborhoods so alluring.

Far too many perfectly good wood windows are unnecessarily replaced (frequently without permits) with off-the-shelf, flush-mounted vinyl or aluminum windows, where a recessed frame had existed. These cheap replacement units, with false muntins sandwiched between dual glazing, are inferior to the original wood windows in both form and function. Their proliferation is decreasing the value of individual homes, adjacent structures and even entire neighborhoods.

These inferior replacements dramatically degrade our cityscape and will ultimately result in a bleak and desolate collections of homes, disconnected from Glendale's architectural roots, instead of the charming and inviting neighborhoods we all have come to love.

We strongly recommend that the city increase the frequency and consistency of code enforcement and ensure that this type of destructive activity is stopped. Homeowners who illegally remove their windows must be required to replace and restore the originals or, if they are lost or demolished, to install new custom-made wood replicas of the originals. Further, ALL applications for window replacement permits must be submitted for Design Review, as this is clearly an exterior change requiring a permit and may be "incompatible with the surrounding neighborhood character or with existing buildings or structures on the lot".

Waiving the Design Review requirements (ref Zoning Code, Chapter 30.47, Design Review, section 020, Item #5) for window replacement applications, or slapping the wrists of those who illegally replace their windows, is unacceptable and should not be tolerated by city staff or those who serve on Boards and Commissions as the gatekeepers of our city's appearance.

Thank you very much for consideration of this matter.

Sincerely,

THE GLENDALE HISTORICAL SOCIETY  
Arlene Vidor, President

Cc: Glendale Homeowners Coordinating Council



## GlenFed Receives Award from AIA

THE PASADENA-FOOTHILL chapter of the American Institute of Architects awarded the designers of The Glendale Federal Complex with its first annual Heritage Recognition Award at an October 8 banquet at Art Center College of Design in Pasadena. AIA cited the “combined genius” of architects W .A. Sarmiento and Maxwell Starkman, who respectively designed the Tower and Annex portions of the complex. The AIA also stated “...the building when viewed from virtually any elevation, [has a] seamless visual appearance and unified architectural identity unique in the region.” Architect Sarmiento and the late Max Starkman’s son David were on hand to accept the awards.

In 2000 the Tower building at 401 N. Brand was earmarked for a complete facade remodel. A coalition of TGHS, The LA Conservancy, and independent preservationists nationwide rallied to its defense. Ultimately, the California Historic Preservation Commission deemed the building state landmark eligible. To date, the owners have been reticent to list it on a historic register. In 2003 the same owners sought to detach the Annex and Tower by dismantling the skybridge and stripping the Annex facade. Again, preservationists formed a coalition, led by Board Member Mike Resnick, and successfully saved the skybridge.

by Arlene Vidor

# Preservation Topics Worth Noting



THE LARGE AND PROMINENT “Late Moderne” church at Glenoaks Boulevard and Central Avenue is for sale.



THE NATIONAL REGISTER eligible Municipal Services building at Broadway and Glendal Avenue will undergo seismic retrofit. The plaza, fountain, and piloti (pylons) will be modified but landmark eligibility will be retained



THE CITY PLANS to demolish this historic Craftsman to make way for a mini-park. TGHS with support of some Historic Preservation Commissioners would like this house to be saved. Why couldn't it be a mini-museum on the park site?



THE FIDELITY FEDERAL building (recently occupied by the Department of Public Social Services and known as the DPSS building) on Broadway at Louise Street will be redeveloped and TGHS will advocate strongly for complete preservation



THIS MOORISH/SPANISH style landmark-eligible building will be redeveloped for mixed use. We are working with the owner and architect to identify ways to maximize preservation of the facade.



# Mission Colony Demolished

The Mission Colony on Mission Road at Glendale, a historic neighborhood that could have been a historic district, was demolished this spring.



## Historic Districting Update

THE MOVE TOWARD establishing Glendale's first historic districts is moving forward. On March 27, the city's Historic Preservation Commission voted to recommend that City Council approve and adopt a revised Historic District Ordinance, city-wide historic district guidelines, and a historic district handbook. These documents are the result of months of work by City Staff, along with Pasadena-based Architectural Resources Group, and a 19-member citizens advisory panel, and were presented to residents in a series of community meetings in January. In comments to the Historic Preservation Commission, a representative of the L.A. Conservancy called the documents exemplary, and likely to be used by other cities in their historic districting efforts. On April 19, Glendale's Planning Commission will vote on the documents as well. With endorsements from the Historic Preservation Commission and Planning Commission in place, the City Council's vote on the documents is scheduled for **Tuesday, May 9 at 6:00 p.m.** in Council Chambers.

STRONG COMMUNITY support has been invaluable in getting the process to this point, and will be even more critical in the upcoming final stages. It's crucial that City Council know that Glendale's citizens support historic districting and expect Council to adopt these measures. Please plan to attend City Council's May 9 meeting to voice your support. If you cannot attend, please send e-mails to each council member:

Rafi Manoukian  
rmanoukian@ci.glendale.ca.us

Ara Najarian  
anajarian@ci.glendale.ca.us

Frank Quintero  
fqintero@ci.glendale.ca.us

Dave Weaver  
dweaver@ci.glendale.ca.us

Bob Yousefian  
byousefian@ci.glendale.ca.us

If you have questions, or would like receive e-mail updates on historic districting, please contact Jane Brown (jbrown@dapinc.com), or John Paul LoCascio (john@historiccrossmoyn.org).

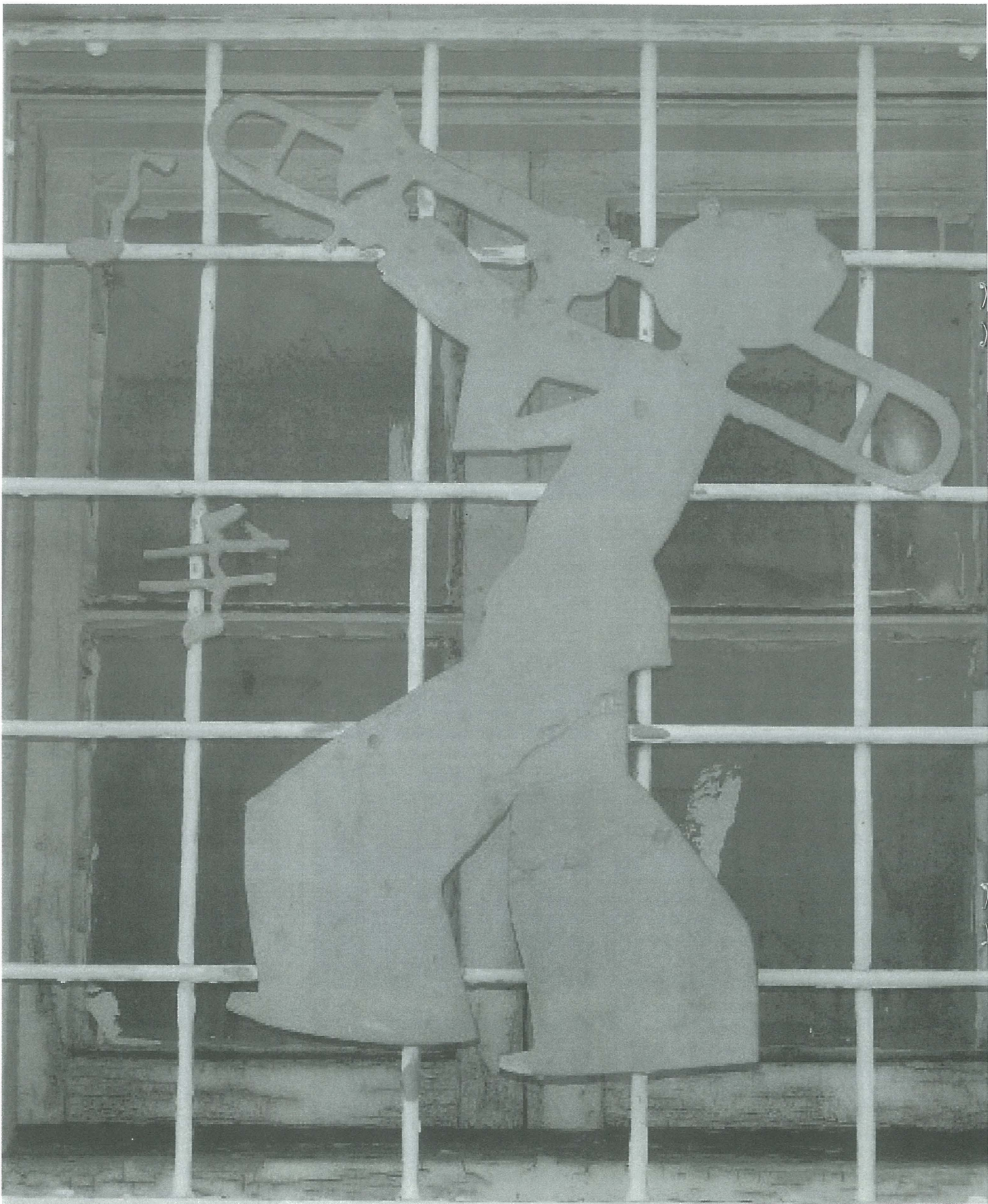
by Gary Hart

## My Vote for Glendale's Most Endangered

by Patricia Messina  
TGHS Events Coordinator  
and Board Member

It is not just single buildings or landmarks, but also neighborhoods that define a city. The most endangered landmarks in Glendale, in my opinion, are each and every home. Often the changes are small at first, seldom even noticed, but over time and multiple occupants many once stunning examples of our architectural history are becoming a mere suggestion of the homes they once were. Since one or two modified homes can change the continuity of the street or neighborhood, each of our vintage homes should be considered preservation-worthy. They define our style, our respect for history, and our regard for art in our community.







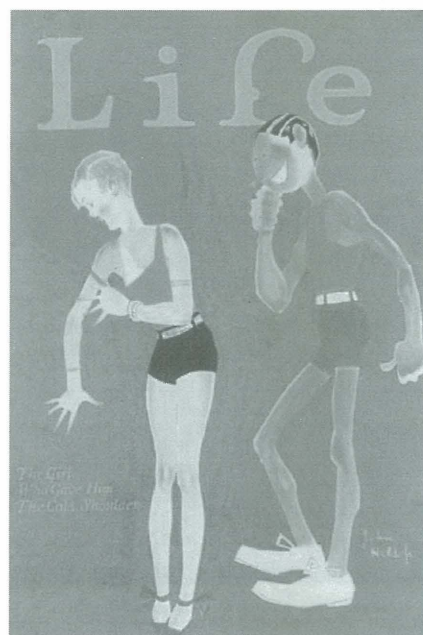
# A Small Gem Unearthed from Glendale's Buried Treasure Chest

**U**NLESS YOU ARE among the most stalwart fans of Glendale's rich architectural history, you may not have noticed the metal musicians performing for passers-by in the windows of a Spanish Revival building on California at Brand Boulevard. These whimsical characters, welded in place for 76 years, are the only known example of architectural art still in existence that was created by the great John Held Jr. (1889-1958)

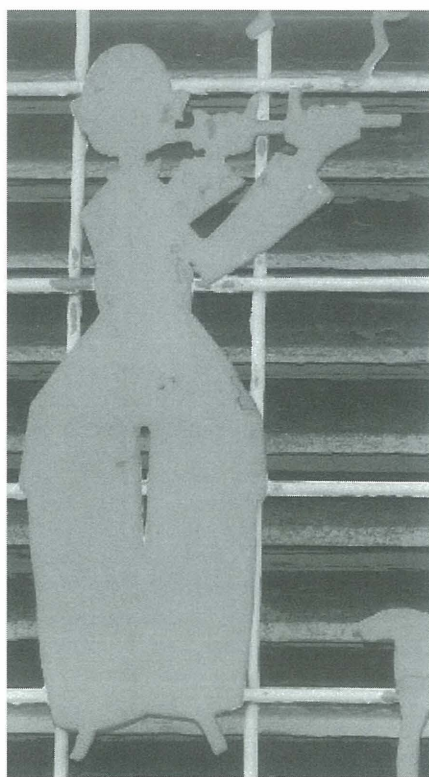
Few artists define an Era as thoroughly as John Held Jr. defined the "Roaring Twenties." In addition to being a world-class artist, he was also a popular cultural icon during the '20s. In the prime of his career, his work appeared in, among other publications, House & Garden, Judge, The New Yorker, Vanity Fair, Harpers, Redbook and the cover of Life magazine. His flapper and "Jazz Age" art appeared on everything from barware to cocktail shakers, Lifesaver candy ads and Parker Brothers games.

The "Band" consisting of saxophonist, trombonist, flutist, drummer, and guitarist, was originally installed in 1929 as decoration for a music store at the building at 301 N. Brand. The magnificent quintet has stood the test of time by surviving countless business changes, building remodels and even World War II scrap drives.

Now they are beginning to show their age. If future generations are to enjoy this wonderful gift from a 1920s icon to the citizens of Glendale, then we must be diligent in our efforts to see that it is preserved. It would be tragic to see such a treasure join the ranks of the Egyptian Village Cafe or the original Bob's Big Boy, as just another one of Glendale's lost treasures.



John Held Jr, left, designed the musicians on the windows of the building at the northwest corner of Brand and California. He was a noted illustrator of the Jazz Age producing many covers for Life magazine and other popular publications.

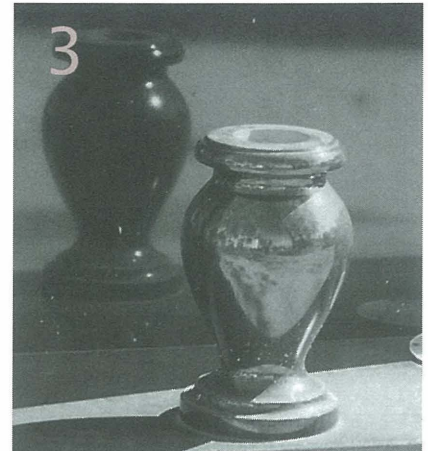
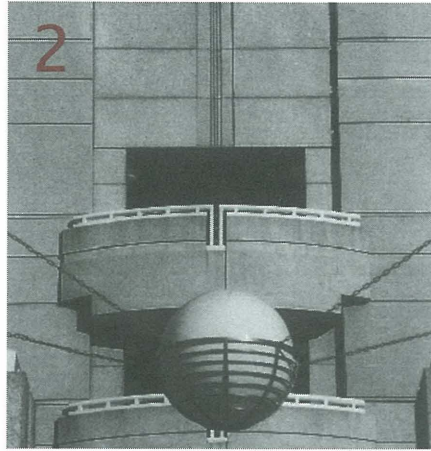
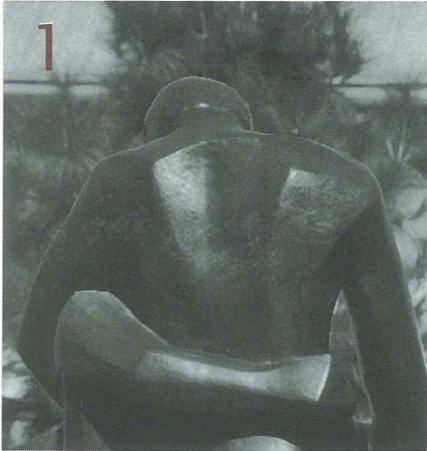


Photos and text by Bruce B. Herman



# It's All in the Details . . .

HERE IS THE FIFTH IN A SERIES testing your awareness of architectural elements scattered around Glendale. The series and photographs are the brainchild of Doctors' House curator Isabelle Meyer. Do you know where these sculptures are or what buildings they are connected with. Try to match the sculpture with the possible answers listed below. Turn to page 9 for the correct answers.



- A. Main Post Office
- B. Central Library
- C. 801 N. Brand
- D. 500 N. Brand
- E. Forest Lawn
- F. New Police Station
- G. Nestle building
- H. Civic Auditorium
- I. Glendale Hilton
- J. War Memorial at City Hall



# Doctors' House NEWS

## Doctor's House Report 2005

by Isabelle Meyer, Curator

In 2005, the Doctors' House proved to be a popular venue, not only for Sunday visitors but for many Glendale schoolchildren. Thanks to the imagination of docent Robin Hansen, third-graders now get to perform "Victorian chores," i.e., girls do laundry with the help of a tub and washboard and hang the clothes on a line to dry, the boys water rose bushes with old watering cans that have to be filled and toted around.

The Fell/White exhibit is one of our favorite exhibits with vintage clothing, furs, accessories and family documents filling every room of the museum. Thanks to the descendants of this early Glendale family, we are able to continue the restoration work on the clothing.

To celebrate the 125th anniversary of the Glendale Unified School District, we brought back our school exhibit later in the year. A recent donation of many early class pictures freshened this display very nicely.

Our docents got a well-deserved break from tours in July, but helped with the staging of the summer plays and sold refreshments to spectators. "Charley's Aunt" was a delightful diversion for balmy summer evenings.

Brooke Applegate created a special summer evening event in August that was well attended and provided another opportunity to enjoy the park after dark. Brooke also spearheaded our annual Halloween event. She has created new and exciting events at the Doctors' House.

Growing evidence of persistent termite activity forced the City to tent the museum during October, but soon after we found the house invaded by hundreds of bees. We welcome being a little less popular with the insect world!

We wrap up each year with our Candlelight Tours. Fortunately, the two Saturday evenings were mild and dry and a total of 231 visitors came to admire the museum by the glow of candles and a dozen vintage kerosene lamps on loan from Craig Lighthizer, who was on hand to make sure they were safely lit and extinguished. We look forward to making these gorgeous light providers a regular feature to demonstrate how a Victorian home looked every night.

TGHS docents add atmosphere to the candlelight tours each winter holiday: Brooke Applegate in the kitchen and Sid Gordon providing music in the gazebo.

Photos by Sid Gordon



### Misha Maksic and his wife Beatrice Jacott Valentine's Day Dinner

HOW'S THIS for confidence? Beatrice Jacott announced to her husband that he did not need to make Valentine's Day dinner plans; she had purchased a raffle ticket at the Doctors' House museum, and knew absolutely positively that she would win—and she did! She and her husband of twenty-three years, Misha Maksic, were served an elegant full-course Italian dinner at the museum, which was opened especially for them. Candlelight, music, and a dozen roses accompanied the meal. The dinner was prepared and donated by **La Fontana restaurant**.

La Fontana, located at the corner of Brand and Glenoaks, has generously supported the TGHS Valentine's Day fundraising dinner for many years. TGHS members are encouraged to try La Fontana, one of TGHS's most consistent supporters, for a wonderful dining experience. When you go, please tell them why you came.

Text and photo by Judy Cabrera

### ANSWERS for page 8

5. New police building - F
4. 801 N. Brand - C
3. War Memorial - J
2. Nestle building - C
1. Central Library - B



## Welcome New\* Renewing and Upgraded+ Members

TGHS would like to extend a special thank you to our new\* and renewing members and to members who have rejoined. Please note that we are also acknowledging membership upgrades+. Consider a membership upgrade the next time you renew—all funds go directly to preservation-related activities since we are a 100% volunteer organization. And please consider any volunteer activities that you may be able to provide us. Especially needed right now is a Membership Outreach Chair to help with expanding our membership. If you would like to help in any way, please call, email or write us!

### VERDUGO PATRON (\$250)

Patricia Messina &  
Terrance Hines+  
Mike Resnick

### TROPICO PATRON (\$100)

Carole &  
Michael Dougherty  
Steve Hales  
Shirley Ann Hill  
(rejoined)  
Arlene Vidor

### SUSTAINING (\$50)

Rosemarie &  
John Barraza  
Brian &  
Diane Davies+  
Dorothy Knisley+  
Los Angeles  
Public Library  
John LoCascio &  
David Brooks+  
Bruce G Merritt\*  
Vic & Barbara Pallos  
Steven A Preston &  
Janet Whaley  
David Saylor  
Edward Steers\*  
Robert &  
Sharon Thompson  
William &  
Leann Warner

### FAMILY/DUAL (\$30)

Dan & Judy Cabrera  
Robert &  
Edwina Carnahan  
Edwin &  
Shirley Croft

Moira Delaney &  
Julio Moline  
Dennis & Carin Greco  
Linda Hom\*  
Shanna & Scott Igoe  
Eileen & John Manus  
Ray &

Virginia Newburn\*  
Bob & Ann Oliphant  
(rejoined)  
Cyrus Sajadian &  
Holly Small\*  
Lila & Rich Ramirez  
Carol Rossow+  
Joal Ryan & Steve Ryfle

### NON-PROFIT (\$25)

Royal Canyon  
Property Owners

### INDIVIDUAL (\$20)

David B Ahern  
Alice Akins+  
Juliet Arroyo\*  
Paul & Marshall Ayers  
Ruth Campbell  
Russell Cinque Jr  
Sally Cress\*  
Joan Doyle  
Sally Dumax+  
Judy Farris-Phares  
Sid Gordon  
Victoria Gorjian  
Shaye Harbor  
(rejoined)  
Historical Society of the  
Crescenta Valley  
William Housos  
Ronald E Ingledue+  
Curtis & Judee Kendall

Phyllis M Kenney  
Michael Kuretich\*  
Daniel Munoz  
Robin Oates  
Ben Otake\*  
Charles Perry  
Frank &  
Bonnie Tortorelli  
Graeme Whifler\*  
Ted Zehfuss

### SENIOR/STUDENT (\$10)

Rev Habib Alajaji\*  
Mr & Mrs John Albu  
Margaret Bickmore  
Doris J Biggs  
Florence T Butterfield  
Marguerite DeBey  
Marie Fish  
Birginia Scott French  
Mary Rose Grim  
Viora Grunewald  
Barbara Hanft  
Elizabeth Hickman  
Valerie Howard  
(rejoined)  
Phyllis M Kenney  
Anne Leichtfried  
Mary McVay  
Marilyn Oliver  
Ronni Otake\*  
Mary Ann Prelock  
Carol Rossow  
George Rutter  
Jack Spurlock\*  
Peter Steuer\*  
Mary Underwood  
Virginia Young

## The Glendale Historical Society

# 2006

## Proposed Budget Condensed

### INCOME

Membership	\$ 5,205.00
Donations	1,300.00
Glen Fed interest	675.00
Merchandise sales	600.00
Museum Special Events	1,740.00
TGHS Special Events	2,750.00
<b>TOTAL INCOME</b>	<b>\$12,270.00</b>

### EXPENSES

Membership other orgs	\$ 400.00
Insurance	1,500.00
Mailbox rental	70.00
Postage	250.00
Telephone	350.00
Website	1,000.00
Newsletter	3,400.00
Publicity	300.00
Office supplies	50.00
Maintainance	1,100.00
Docent training	150.00
Purchases	600.00
Awards, recognition	350.00
Museum Special Events	2,050.00
TGHS Special Events	700.00
<b>TOTAL EXPENSES</b>	<b>\$12,270.00</b>



# Oral History Program Taking Off . . . Again

A SMALL GROUP representing TGHS, the Public Library, and Glendale Community College met on March 28th to develop strategy for a city-wide oral history program. Many cities and historical organizations have these programs to capture the recollections of long-time residents, leading citizens and others with a unique perspective on life in a certain time and place. Recently

students at Glendale Community College participated in an oral history pilot program and interviewed many older citizens of Glendale on camera. At one point in the 1980s and 90s, the City of Glendale Planning Department sponsored an Oral History Program including collecting many interviews completed by other independent researchers into Glendale's history, such as TGHS, journalist

Katherine Yamada, and Juliet Arroyo. The committee (pictured below) meeting for the first time, decided to put first things first and collect and catalog all interviews done already in the Special Collections department of the Central Library. The next goal is to expand the committee to get a diverse range of experts on board and to proceed with the Oral History Program. If you wish to volunteer as an interviewer, interviewee, transcriber, videographer, or organizer for the City Oral History Program, please contact either Arlene Vidor, TGHS president, or Nora Goldsmith, of the Central Library.



The Oral History Committee has a first meeting. Left to right: Joe Denhard, Lifelong Learning Seminars/Glendale Community College; Nora Goldsmith, Library Administrator; George Ellison, Library Assistant, Special Collections; Patricia Zeider, Library Branch Manager, Montrose; Arlene Vidor, TGHS.

## Join The Glendale Historical Society and Support Historic Preservation in Our Community

THE SOCIETY IS A NON-PROFIT, tax exempt organization and we encourage you to join and volunteer. Please complete this form and mail it with a check payable to The Glendale Historical Society, PO Box 4173, Glendale CA 91202

Jewel City Patron (\$500)  
 Verdugo Patron \$(250)  
 Tropico Patron (\$100)  
 Sustaining (\$50)  
 Family/Dual (\$30)  
 Individual (\$20)  
 Individual Senior or Student (\$10)

*Organizational Membership*  
 (No voting rights)  
 Non-Profit (\$25)  
 Small Business (\$35)  
 Corporate (\$100)

Name \_\_\_\_\_ Phone \_\_\_\_\_  
 Street Address \_\_\_\_\_  
 City/Zip \_\_\_\_\_ Email Address \_\_\_\_\_

CHECK AREAS OF INTEREST:  
 Preservation                      Historic Districts                      Event Planning  
 Fundraising                      Outreach                      Newsletter  
 Doctors House docent                      Research Glendale history



**Gene Dudley**  
 REALTOR®



**Prudential**

**California Realty**  
 1300 N. Verdugo Rd., Glendale, CA 91208  
 RealEstateByGene@aol.com  
 Direct 818 550-3335  
 Bus 818 507-4200 Fax 818 242-7542  
An independently owned and operated member of Prudential Real Estate Alliance, Inc.



Visit the Doctors' House  
MOTHERS DAY May 14  
11-5

DOCENTS NEEDED  
Call Isabelle Meyer at  
818 242-4290

The Glendale Historical Society  
PO Box 4173  
Glendale CA 91202  
[www.glendalehistorical.org](http://www.glendalehistorical.org)

Council to vote on  
historic district documents  
Tuesday  
May 9 6pm  
City Hall

## Victorian Mourning Customs

See the unique exhibit at  
the Doctors' House

**D**URING MAY AND JUNE, the Glendale Historical Society will display artifacts which would have been found in a Victorian home during periods of grieving for a family member.

The seven rooms in the house museum will have a variety of 19th century items on display, from elaborate mourning costumes, to framed hair wreaths and hair jewelry to cemetery art and post-mortem photographs.

This exhibit clearly demonstrates the holistic relationship Victorians had with death and dying in a time before dying became institutionalized. Sentimental grief embroidery and lovingly created mementos filled a home to provide comfort in times of loss.

The Doctors' House is open every Sunday from 2 - 4 p.m. for docent-led tours. A donation of \$1 per person is recommended. Week-day tours for groups can also be arranged by calling (818) 242-4290. The museum is located in Brand Park at 1601 W. Mountain Ave. in Glendale.

by Isabelle Meyer  
Curator, Doctors' House

## SAVE THESE DATES!

### ANTIQUÉ APPRAISAL FAIR

A DAY TO APPRAISE YOUR FAVORITE ANTIQUE COLLECTIBLES  
SATURDAY, JUNE 3, 2006 10am-2pm

THE GLENDALE CIVIC AUDITORIUM  
1401 N. VERDUGO ROAD  
(JUST NORTH OF MOUNTAIN)

AMERICA'S TOP EXPERTS WILL BE THERE TO APPRAISE YOUR COLLECTIBLES: JEWELRY, ART, MILITARY, FURNITURE, RUGS, BOOKS, DECORATIVE ARTS, AND MUCH MORE!  
ENTRY FEE ON SITE IS  
\$5 PER APPRAISAL; LIMIT OF 5 APPRAISALS

### CENTENNIAL HOME TOUR

HIGHLIGHTING OUR ARCHITECTURAL EVOLUTION THROUGH  
EACH ERA

10 HOMES IN 2 DAYS! SATURDAY AND SUNDAY  
OCTOBER 7 - 8, 2006

Watch for advance ticket sales through our website  
[www.glendalehistorical.org](http://www.glendalehistorical.org)

Day-of-event ticket sales and tour brochures will be available at  
851 West Mountain Street (corner of Ard Eevin)

To suggest potential tour homes or to volunteer email us at  
[events4tghs@aol.com](mailto:events4tghs@aol.com)