
The Glendale Historical Society

Preserving and Celebrating Glendale's History and Architectural Heritage Spring 2007



Thirty Glendale residents and city employees attended the LA Conservancy's Preservation Awards Luncheon this year to celebrate Glendale's preservation award for the Historic District Design Guidelines. Pictured here are left to right: Laura Friedman, Arlene Vidor*, John LoCascio*, Carole Dougherty, Margaret Hammond, Juliet Arroyo, Gary Hart*, Lila Ramirez*, Jane Brown, Patty Silversher*.

*Member of Historic District Design Guideline Advisory Panel



TGHS Board Member Mike Resnick was recognized for the preservation of the 1960 apartment building designed by Richard Neutra to provide low-cost housing for workers.

GLENDALE RECEIVES AWARD FOR DESIGN GUIDELINES

This year marks the 26th consecutive year the Los Angeles Conservancy (America's largest member-based preservation advocacy organization) has given its prestigious Preservation Awards. A jury of nationally recognized experts are chosen to select projects completed in The Greater Los Angeles area that demonstrate outstanding achievement in the field of historic preservation.

On May 10, 2007, The City of Glendale was honored by the LA Conservancy for its **Design Guidelines for Residential Buildings in Adopted Historic Districts**. Councilmember Dave Weaver lead a delegation of City staff and community members onto the stage to the applause of 600 developers, preservationists, elected officials and other VIPs at the historic Millennium Biltmore Hotel in downtown Los Angeles. It was the largest crowd ever to attend the Conservancy's glittering awards luncheon. Also, TGHS Board Member and developer Mike Resnick, and his project team were honored for their **Poster Neutra Project**, giving TGHS two special connections to the LAC's awards this year. The Conservancy gave beautifully produced and very inspirational pictorial presentations on each award winning project. To read and see more about each award winner visit www.laconservancy.org.

THE CITY OF GLENDALE'S DESIGN GUIDELINES FOR RESIDENTIAL BUILDINGS IN ADOPTED HISTORIC DISTRICTS: When the City of Glendale received its first historic district nomination in 2003, there was confusion. City leaders, TGHS, and community members realized there was a need for consistent city-wide design guidelines for buildings in historic districts. The award and adoption of these guidelines are the culmination of years of effort on the part of the community and supportive city staff to realize a workable historic districting process. In addition to the LA Conservancy Award, we just found out that these guidelines have also been recognized for an award by the American Planning Association. Obviously, Glendale's guidelines are a model for other city's to follow. A 19-member community advisory panel helped craft the guidelines.

THE POSTER NEUTRA: Named for its original owners, David and Grace Poster, this restored 8-unit building was the only workforce apartment house built by Neutra at the height of his career. The LAC noted that "...despite its small size building and budget, the Poster Apartments elegantly incorporated Neutra's hallmarks of expansiveness, interior openness, and integration with nature." Mike Resnick lead his project team (which included Neutra's original project architect) to a complete restoration of the building from a severe state of decline into affordable housing that is well below the city's average rents—a tangible reminder of the promise of mid-century modernism.

President's Message

Dear members,

The City Council election is over but does this mean we are now back to normal? We all know there is no such thing as "normal" in Glendale, other than the keen sense of community involvement held by so many people on issues affecting this city.

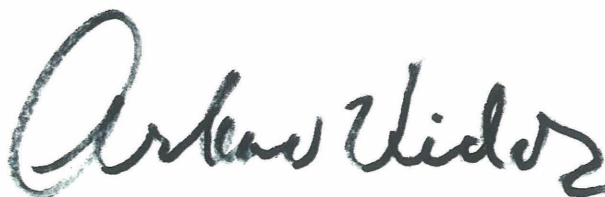
IT IS DEFINITELY A good time to reaffirm our commitment as individuals and as an organization to staying involved and getting even more involved—regardless of whether or not your favorite candidates were elected.

I RECENTLY HAD THE privilege of spending time in the City of Jerusalem. Talk about historic. More than a few times the thought crossed my mind that if many of the treasured buildings in that city had not been cared for and protected and recognized as important through their earliest years, they wouldn't be here today. I bet you think I'm talking about things like

Roman antiquities and ancient churches, mosques and synagogues, right? Only partly right. The City of Jerusalem also recognizes some of its treasured landmarks of its recent past, such as the Templar Houses and many Bauhaus buildings. These may not be as exalted as the antiquities, but their importance to the ongoing development of the place is definitely recognized.

In Glendale we seem to be contemplating more and more about what "historic" means in the context of our own unique development—and we should because Glendale is a great city.

HAPPY SPRING.



Arlene Vidor
Spring 2007

The Glendale Historical Society Officers & Board of Directors

PRESIDENT

Arlene Vidor
avidor@earthlink.net

VICE PRESIDENT

John LoCascio
jpl-arch@earthlink.net

SECRETARY

Mike Resnick
mike.resnick@not-a-box.com

TREASURER

Judy Cabrera
judy@dcabrera.com

MEMBERSHIP CHAIR

Vacant

BOARD MEMBERS

Margaret Hammond
Isabelle Meyer

NEWSLETTER LAYOUT

Carole Dougherty
czdougherty@sbcglobal.net

CONTRIBUTORS

Sean Bersell
Judy Cabrera
Isabelle Meyer
Mike Resnick
Arlene Vidor
Elaine Wilkerson
Katherine Yamada

Write us at:

TGHS

Post Office Box 4173
Glendale, CA 91202

Visit us on the web at:

www.glendalehistorical.org

The Glendale Historical Society
Quarterly Newsletter is the
official publication of the
Society

First Application for Historic District Overlay with Revised Procedures Submitted

On February 14, Carol Merry and Elaine Wilkerson submitted our application for a Royal Boulevard Historic District. On March 4, Carol and Elaine co-hosted a wine and cheese party to share information about the proposed district with affected property owners and the Royal Canyon HOA board members. Arlene Vidor and John LoCascio also attended to lend their support for the community outreach. All in attendance were very enthusiastic about the initiation of the review process.

THE HISTORIC PRESERVATION COMMISSION reviewed this application at its meeting on March 26. After supportive speakers from the neighborhood and Arlene Vidor representing TGHS, the Commission accepted the application as eligible on a preliminary basis and authorized circulation of a petition requesting a historic survey. This petition requires signatures of at least 25% of the owners. This requirement was exceeded within days of the Commission meeting. After the survey is completed, another petition with signatures of at least 50% of the owners is required for Council to consider the request for the overlay zone at a public hearing.

THE INITIAL BOUNDARIES OF THE PROPOSED district were selected to include all thirty homes fronting on Royal Boulevard between Mountain/Del Monte and Arboles/Princes. This area has homes generally set back with substantial lawns and gardens; it is known throughout the City as a grand scenic drive lined by Califor-

nia Fan Palms; it has distinctive individually-designed homes of similar massing and size; it was generally built in a 30-year timeframe similar to other character neighborhoods in the Rossmoyne and North-West Glendale communities.

ROYAL BOULEVARD WAS A SEPARATE UNIT of Rossmoyne Village developed by the Nibley Investment Company. Royal Boulevard was intended to be a "Spanish Village" as part of Rossmoyne Village with individually designed homes. The original homes on Royal Boulevard were Spanish Colonial Revival constructed in the late 1920s and early 1930s. After that time, Rossmoyne Village, Inc. (who took over the development) did not continue the Spanish Village theme and the remaining homes constructed through the early 1950s followed various other revival styles and more contemporary minimalist traditional and ranch styles.

More information will be provided as this application unfolds.



Spanish/Mediterranean, English Revival and French styles of architecture are represented in the proposed Royal Boulevard historic district

THERE IS MORE ABOUT ROYAL BOULEVARD ON PAGES 4 AND 5.

Royal Canyon Homeowners Join Fo

I think that I shall never see
A billboard lovely as a tree
Ogden Nash

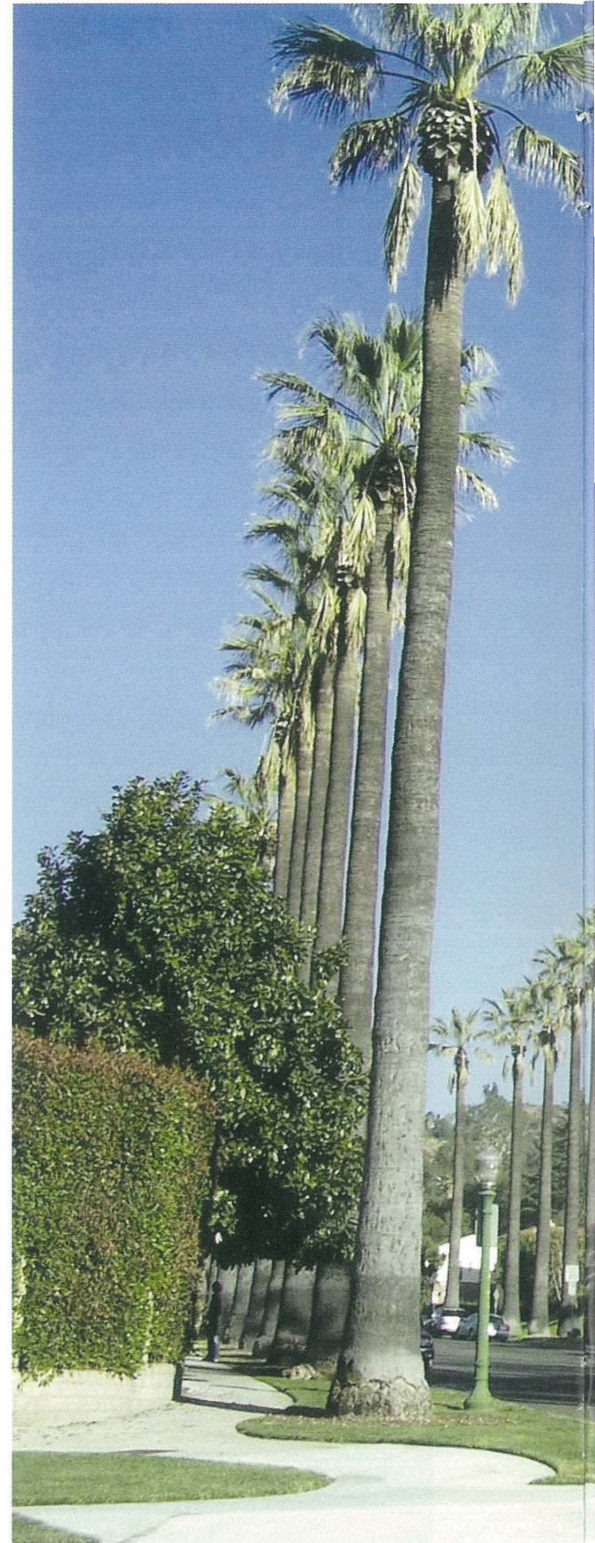
A large part of Royal Boulevard's identity is in the majestic row of California fan palms (*Washingtonia filifera*) marching up the street. Like so much in life, we began to appreciate them and learn their history only when faced with the possibility of their loss. It was hard to imagine Royal Canyon without its magnificent royal palms, but old age and disease were taking their toll, and several of the trees died and had to be removed in 2006.

The concerned homeowners, along with Royal Canyon Property Owners Association, have been working with Teresa Prosewicz, urban forester for the City of Glendale, to initiate a replacement program. The first replanting took place in April. More than fifty trees were used to fill blank spaces, with consideration given to the wishes of the homeowner, as well as planning around utility lines, sewer and storm drains.

In the morning, a palm specialist gave a presentation on palms and how to plant them, and then volunteers assisted in the actual planting. Gloves were very welcome! Information tables were set up for The Tree People, a nonprofit group dedicated to the greening of neighborhoods, and Step It Up 2007, an organization dedicated to awareness of global warming.

A photograph of Royal Boulevard taken circa 1927 shows the tiny palms at about three feet tall, lining both sides of the street. The replacement trees will be four to five feet tall, since mature trees are prohibitively expensive. (The current trees tower at over eighty feet high.) The newly planted palms will gradually become the predominant street trees as the old ones die and are removed, and the lovely canopy will be maintained.

The experience has been a positive example of what committed homeowners and caring city staffers can accomplish, working together to preserve a part of Glendale's history.



The photo at left shows the original planting of fan palms. Many of the trees are dying. Homeowners banded together and with the help of the City of Glendale, they have replaced the old trees with new ones.

Resources to Replace Dead Trees

by Judy Cabrera



palms on Royal Boulevard in 1927. The one above shows the trees recently. Because the trees are reaching their life span many the help of Glendale's urban forester, Teresa Prosewicz, planted new trees which will replace the diseased and dying ones.

re to read about Royal Boulevard's new status as a historic district on page 3.

Celebrating Edward Weston

by Katherine Yamada and Arlene Vidor

TOP: "The Little Studio," Edward Weston's first photographic studio on south Brand circa 1911

CENTER: Edward Weston and his Tropico studio assistant, model and muse, Margrethe Mather were photographed together in 1922 by Imogen Cunningham



The famous photographer spent two decades in his studio in Tropico, which is now southern Glendale.

The Glendale Historical Society and the Friends of the Glendale Public Library will partner in an event to honor Edward Weston's early career as a photographer in The City of Tropico. This event, at the Glendale Public Library main branch on Thursday, September 27th will feature an expert speaker who will discuss Weston's life and it will also include displays of Weston's early work in Tropico and scenes of the area during Weston's time here.

A little back story for those of you who may not have heard: The area below Windsor St. was once a small town called Tropico. It was an up-and-coming city that almost made it independently until Glendale gobbled it up in 1918. Now we know it as southern Glendale.

HOW DID WE GET INTERESTED IN THIS TOPIC? WHEN I (Arlene) turned my attention to photography full time in 2005, I got together with some friends to form The Tropico Artists Collective so we could have art critiques, discussions, and do exhibitions. We decided to name our group after Tropico because several of us lived in southern Glendale and we wanted to honor the spirit of a place that had inspired such a great artist as Weston.

WHEN I (KATHERINE) BEGAN RESEARCHING the marriage of Edward Weston to Flora Chandler for an article I did for the Glendale News Press (July 11, 2005), I spoke with Arlene about Weston's life and work in Tropico and we got really interested in the topic. We then decided to go to The Getty Center Research Institute and have Brett Abbott, photography curator, show us the Getty's vast archive of Weston's original photographs—many made while he lived and worked in Tropico. Not only did Weston do beautiful portrait photography but he also made images of the environment that shed light on Tropico's beauty and charm at the turn of the century.

In 1906 the 20-year-old Weston came to Southern California to visit his sister but it was the bucolic charm and inspiring Tropico landscape that



Assistant Curator of Photography at The Getty Center Brett Abbott (center) shows Arlene Vidor and Katherine Yamada the archives of Edward Weston's life in Tropico.



Photo courtesy The J Paul Getty Museum

thern Glendale

kept him here. In 1911, Weston opened his first studio, called "The Little Studio, on Brand Boulevard, just north of Tropico Avenue (now Los Feliz Blvd.). This studio would serve as his base of operations for two decades. In 1912, he began a decade long collaboration in the studio with Margrethe Mather who was his studio assistant and frequent model and as Weston put it "...the first important woman in my life." Mather had a profound influence on Weston's photographic style.

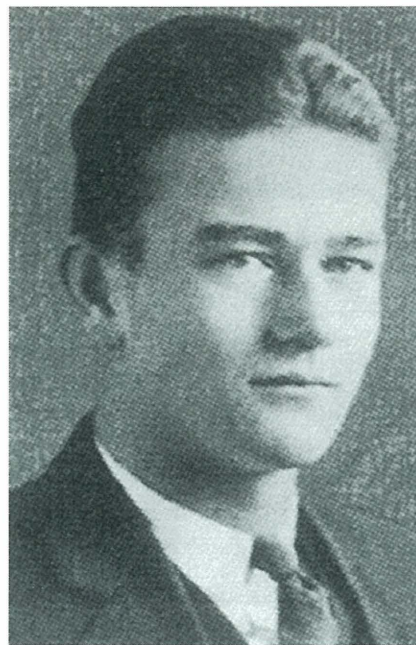
Weston helped produce a public relations booklet called "Tropico, The City Beautiful" and his love of the place is clearly evident in the photographs he took for this booklet. That booklet is archived in the Glendale Public Library's Special Collections Room and can be seen by appointment.

Weston, of course, went on to become one of the most celebrated art photographers in the world and his nudes and images of nature are immediately identifiable icons of photography throughout the world.



Photo: Brett Yamada

Photo: Gary Freeman



Glendale High School yearbook photo, 1925

Happy 100th Birthday Marion Morrison (aka John Wayne) Glendale High School Graduate Class of 1925

by Katherine Yamada

MARION MORRISON, who the world knows as John Wayne, was born 100 years ago, on May 26, 1907, in Iowa. His family moved to California and tried farming in Lancaster for a while. They relocated to Glendale when Marion was about 9 years old. He entered the 4th grade at Doran Street School (now R.D. White) and helped his family financially by delivering papers.

AS A YOUNG BOY, Morrison loved to watch outdoor filming at the Kalem Studio located near the intersection of Verdugo Road and California Avenue. Helen Holmes, a daring young actress who did her own stunts starred in many Kalem films. Morrison was on hand one day when she was tied to the tracks and watched horrified as a rushing train barreled over her. When she got up, unscathed, Morrison was hooked and spent so much time around the lot that the producer started giving him odd jobs.

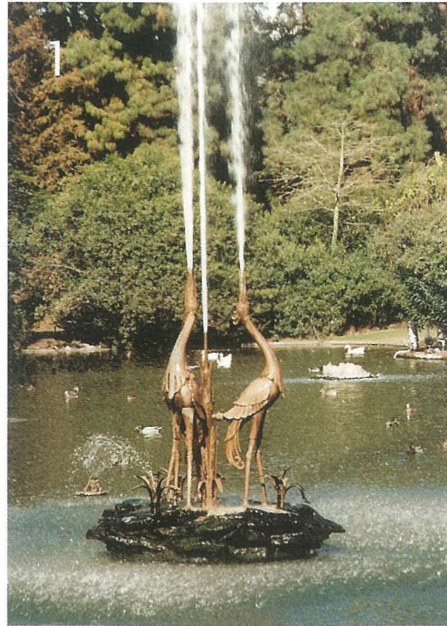
Morrison spent his first two and one-half years of high school at the first Glendale High School on Harvard Street and was part of the first class to move to the new campus on Verdugo Road. He was a good student and played football for Glendale High's 1924 championship team. He graduated in the Class of 1925. While in school he joined the Order of DeMolay, a youth group which was part of the Masonic organization.

TECHNICALLY SPEAKING, Marion Morrison, aka John Wayne, isn't one of Glendale's native sons, but he certainly comes close.

It's All in the Details . . .

HERE IS THE SEVENTH in a series testing your awareness of architectural elements scattered around Glendale. Do you know where these water features are? Try to match the photo with the possible answers listed below. Turn to page 9 for the correct answers.

Concept and photos by Isabelle Meyer



- WATER FEATURES**
- A. Glendale College
 - B. Brand Park
 - C. Adams Square
 - D. Glendale Hilton
 - E. Civic Auditorium
 - F. 400 N. Brand Blvd.
 - G. Verdugo Adobe
 - H. Forest Lawn
 - I. Nestle Building

Doctors' House highlights Meet the Lighthizers

by Isabelle Meyer, Curator

LITTLE DID CRAIG AND LEYLA LIGHTHIZER know, when they visited the Candlelight Tours at the Doctors' House several years ago, that they would soon become intricately involved. As aficionados of the Victorian Era, they were naturally drawn to our period house museum, and as long-time collectors recognized one of their own in **Sid Gordon**, our faithful "musical Santa

Claus." When they returned to see our mourning and grieving exhibit, they shared their expertise about period kerosene lamps and fixtures which proved helpful in reevaluating the suitability of some of our lamps.

CRAIG GRACIOUSLY OFFERED to arrange for a special showing of some of his more than 60 kerosene lamps on site and we soon agreed on a Sunday in June. Our visitors that day were treated to the rare sight of 30 kerosene lamps decorating the rooms of the museum, some of them casting their gentle light under the careful supervision of Craig and Leyla.

We decided that since so few people were on hand to enjoy this treat, we would intersperse some of these lovely lamps with the candles at our upcoming Candlelight Tours. That's how our 300 December visitors had the opportunity to see the kind of lighting used during the Victorian Era to illuminate everyday evening activities. Our thanks go to the Lighthizers for their willingness to share their treasures and spend the time carefully packing, transporting and setting them up for the enjoyment of the public.

CRAIG ALSO DONATED one of his meticulously restored lamps to the museum and the blue handpainted base complements the decor of Dottie's room perfectly.

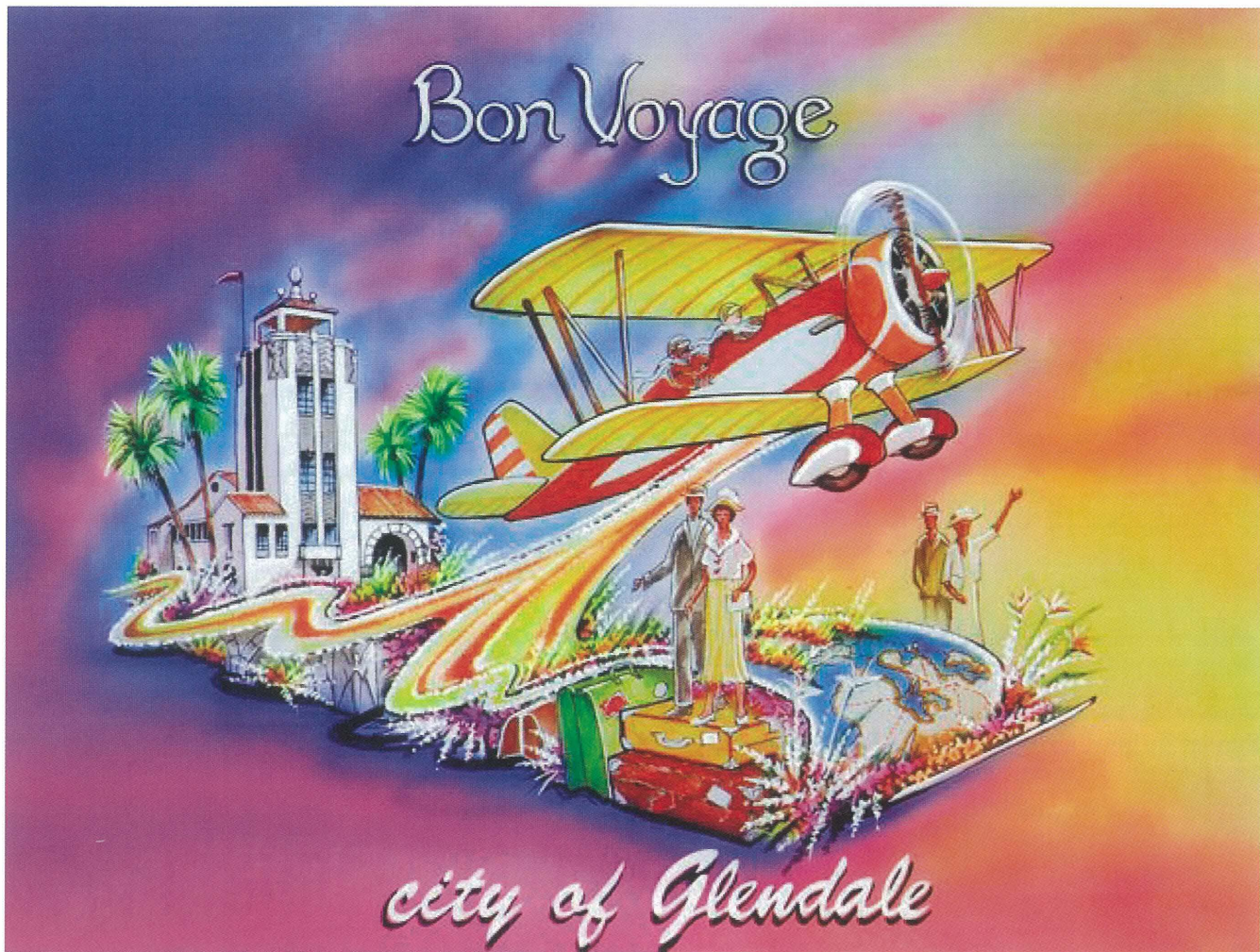
Craig's interest in these lamps stems from a fondness of period glass, and his professional background in electronics allows him to restore the lamps himself. His and Leyla's home in Tujunga is filled with their collection and others such as Leyla's hairpins and vintage clothing.

Leyla is also a member of the New Victorian Society of Southern California, a group enjoying social teas both in their homes and public tearooms in the area. Leyla has a fascinating background as a professional dancer who worked on cruise ships and appeared in the 1980s movie "The Best Little Whorehouse in Texas."

HER INTEREST IN VICTORIAN costumes ties in perfectly with Doctors' House activities and it is always sad to see her leave the museum; she looks so authentic, she should really be allowed to live there! They recently joined the Society as members and, now, we look forward to their continued involvement with our little paradise in Brand Park.



TOP: Craig Lighthizer next to one of his kerosene lamps and
BOTTOM: Leyla in one of her Victorian era dresses.



Glendale's 2008 Rose Float Will Feature Grand Central Air Terminal

by Sean Bersell

THE CITY OF GLENDALE'S ENTRY in the 2008 Rose Parade will feature the city's historic Grand Central Air Terminal. Titled "Bon Voyage (A Grand Take-Off)," the float depicts a biplane taking off from this landmark airport.

The Glendale Rose Float Association (GRFA) came up with the design in response to the 2008 Rose Parade Theme, which is "Passport to the World's Celebrations." As GRFA considered how to celebrate Glendale's role in travel, we immediately concluded that we should feature Grand Central Air Terminal because of its historic contribution to commercial airline travel and the way it connected Glendale to the entire world.

Located at 1310 Airway, along the Los Angeles River along the western edge of Glendale, the Grand Central Air Terminal was the premier commercial aviation hub in Southern California in the 1930s. Officially

opened on February 22, 1929, it had the first paved runway west of the Rockies and offered the first air service between Los Angeles and New York City. The inaugural regularly scheduled transcontinental flight from Glendale took place on July 28, 1929. The initial leg of the 48-hour flight was piloted by Charles Lindbergh and its passengers included Mary Pickford and Douglas Fairbanks, Sr.

BY THE EARLY 1940s, though, the Grand Central Air Terminal had been supplanted as the locus of commercial aviation in Los Angeles by other airports. During World War II, it was used to train military pilots. After the war, usage of the airport continued to decline, and it was officially closed in 1959.

The Spanish Colonial Revival terminal building and its attached Zig-zag Moderne control tower were de-

FLOAT continued on page 12

**Welcome New*
Renewing and
Upgraded+
Members**

A HEARTFELT THANKS to
our *new* and *renewing*
members, and to members
who have rejoined. And a
special Thank You to
members who have
upgraded+ their
membership. Consider a
membership upgrade the
next time you renew.

TROPICO PATRON (\$100)
Bill & Sydney Bennett+
David Smith
Arlene Vidor

CORPORATE (\$100)
Bonnie LaPenotiere Sirk

SUSTAINING (\$50)
Howard Anderson
Jane Brown & Gary Hart
Rich & Lila Ramirez+
Jeannette Stirdivant

FAMILY/DUAL (\$30)
Norm & Evelyn Cecere
Edwin & Shirley Croft
Mark Hoose*
Connie Humberger*
Craig & Leyla Lighthizer
Amanda Maloney*
Bill & Elaine Wilkerson*

INDIVIDUAL (\$20)
Shirley Darling+
Joan Doyle
Mary Jo Ferrell*
Marcia Hanford
Richard Threlkeld
Sandra Weggeland*
Stephan Zupkas

SENIOR/STUDENT (\$10)
Marie Fish
Merry Franzen
Elizabeth Hickman
Valerie Howard
Beth Knox
George Rutter
Mary Underwood
Virginia Young

**Our "Pretty In
White" exhibit**

runs through May and June at the
Doctors' House museum

Entry is always free to Society members.

The "Pretty in White" exhibit displays a Victorian wedding scene in our parlor featuring four mannequins in vintage garb. Isabelle Meyer and Robin Hansen, in keeping with preparations for a family wedding, decorated the house. Thanks to Robin's talents as a florist, floral decorations add to the festive air. Vintage lacy dresses in white are on display throughout the house. Take some time to appreciate the amazing skill needed to create the lovely lace-work and tailoring of these delicate garments.

A stroll through the house museum under the capable lead of one of our docents will surely cool you down on a hot spring day and allow for a brief escape from your everyday life. The museum is open every Sunday from 2 - 4 p.m. and group reservations can be made for weekday tours by calling 242-4290.

**Join The Glendale Historical Society
and Support Historic Preservation in Our Community**

THE SOCIETY IS A NON-PROFIT tax exempt organization and we encourage you to join and volunteer. Please complete this form and mail it with a check payable to The Glendale Historical Society, PO Box 4173, Glendale CA 91202

Jewel City Patron (\$500)
Verdugo Patron \$(250)
Tropico Patron (\$100)
Sustaining (\$50)

Family/Dual (\$30)
Individual (\$20)
Individual Senior or Student (\$10)

Organizational Memberships
(No voting rights)
Nonprofit (\$25)
Small Business (\$35)
Corporate (\$100)

Name _____ Phone _____

Street Address _____

City/Zip _____ Email Address _____

CHECK AREAS OF INTEREST:

Preservation
Fundraising
Doctors House docent

Historic Districts
Outreach

Event Planning
Newsletter
Research Glendale history

MARK YOUR CALENDAR
May 23 7-9 pm
Brand Recital Hall

Book Talk and Signing
Chris Nichols
author of biography of architect
Wayne McAllister

FLOAT continued from page 10

by Henry L. Gogerty. The structure has been declared to be “an excellent representative of early ‘simple’ airport terminal design, which drew upon architectural forms previously established for building types associated with railroad transportation.” Indeed, even the “Grand Central Air Terminal” name is reminiscent of a railroad station.

THE PROPERTY WAS ACQUIRED in 2000 by The Walt Disney Company as part of the company’s expansion of its Glendale campus. Disney and the Glendale Redevelopment Agency entered into an agreement that outlines plans for Disney to rehabilitate the terminal building and list it on the National Register of Historic Places no later than 2015. The terminal would be restored sooner than 2015 should Disney develop the property immediately adjacent to it before then.

The terminal building/control tower is a landmark of worldwide importance to the history of aviation and one of Glendale’s most treasured historic buildings. Now, as a result of the float, people across America and even beyond our borders will get to know and appreciate the Grand Central Air Terminal.

The city of Glendale, which first entered a float in the parade in 1911, holds the distinction of being the

second-oldest continuous entry in the Rose Parade. 2008 will mark Glendale’s 95th entry in the parade.

FORMED IN 1978, THE GLENDALE ROSE FLOAT Association is responsible for recommending the design of Glendale’s entry in the annual Rose Parade, decorating the float, and raising funds for construction and decoration. It is an independent association and is not a government agency. The Association raises funds for the float through memberships, donations, and the popular Dreaming of Roses event.

TGHS Member Sean Bersell is Vice President of the GRFA. Much of the information in this article about Grand Central Air Terminal comes from the city of Glendale’s website: <http://personnel.ci.glendale.ca.us/GCATG/home.html>

**WOULD YOU LIKE TO SIT ON THE GLENDALE
ROSE FLOAT DURING THE PARADE?**

There will be eight riders on the float. Several of the seats on the float will be auctioned off at the annual Dreaming of Roses event, to be held in September. One seat will be awarded through a raffle. For more information about the float and the Glendale Rose Float Association, please see www.glendalerosefloat.org.

The Glendale Historical Society
PO Box 4173
Glendale CA 91202
www.glendalehistorical.org