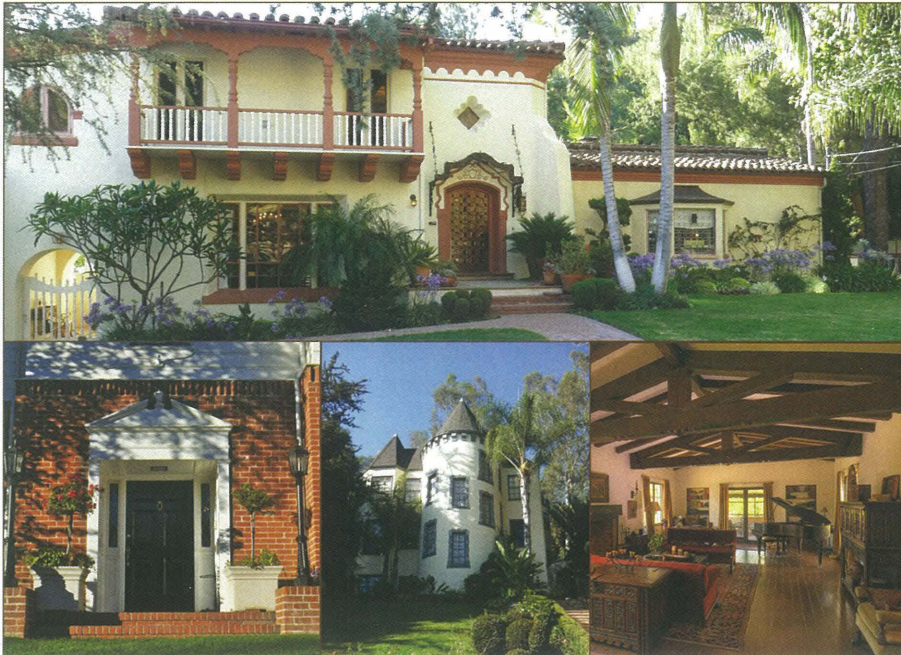

The Glendale Historical Society

Conserving Glendale's Heritage Fall 2011



FALL 2011 HOME TOUR

GLENDALE GEMS

An architectural tour of
homes on
Glendale's Register of
Historic Resources

Sunday, October 2, 2011

11:00 am - 4:00 pm

Historic Homes of the Jewel City

By Greg Grammer

Tickets are now on sale for The Glendale Historical Society's Fall 2011 Home Tour, "Glendale Gems: Historic Homes of the Jewel City," which is scheduled for Sunday, October 2, 2011.

This year's tour features architecturally significant homes listed by the City of Glendale on our local Register of Historic Resources, including a 1926 Spanish Colonial Revival designed by renowned architect Paul R. Williams. Known as the "Architect of the Stars," Williams designed homes for many Hollywood celebrities, including Lucille Ball and Desi Arnaz, Humphrey Bogart and Lauren Bacall, Cary Grant, and Frank Sinatra.

Other private homes on this year's tour include a castle-like French Revival home built in 1926, a stunning 1936 Spanish Colonial Revival with an Art Deco flair designed by Los Angeles architect William Barber, and an elegant 1936 American Colonial Revival designed by Glendale's own Merrill W. Baird.

The homes will be open for docent-led tours from 11:00 am to 4:00 pm, with the last tour in each house starting at 3:30 pm. Tickets are available for purchase now at www.glendalehistorical.org or by mail at P.O. Box 4173 Glendale, CA 91202.

Tickets are \$20 for TGHS members (\$30 for non-members) if purchased by September 30. Members may purchase up to

four tickets at the discounted member price. Pre-paid tickets will not be mailed, but will be available for pick up on the day of the tour, along with a map and driving directions to the homes, starting at 10:30 am at Brand Library, located at 1601 W. Mountain Street in Brand Park.

The historic Brand Library, which will be open and serve as the starting point of the tour, is housed in the grand El Miradero mansion that early Glendale developer and "Father of Glendale" Leslie C. Brand had built in 1904.

Tickets will also be available the day of the tour starting at 10:30 am for \$25 for TGHS members (\$35 for non-members) at the Brand Library.

TGHS President John LoCascio, a residential architect and graduate of the USC School of Architecture, and Vice President Greg Grammer are the curators of the 2011 Home Tour.

For more information, or to purchase tickets, visit www.glendalehistorical.org or call 818-242-7447.

PHOTOS CLOCKWISE FROM TOP LEFT: Victoria Lasken; © Paul R. Williams Project, University of Memphis, photographer, David Horan, 2010; Victoria Lasken; Elizabeth Cohen

President's Message

The Board of Directors will meet on October 12 to elect officers for the 2010-2011 year, and among them will be a new President. After three years as President and more than eight on the Board, it's time for me to step aside and make room for new leadership and fresh ideas. I will remain on the Board for one more year, through the end of my current term as a Director, to provide whatever transitional assistance I can to the new President.

Such change is good for the organization; the regular rotation of directors and officers helps to keep TGHS sharp and vital. It is also good for me, as over the next several months I will be researching and writing my master's thesis in historic preservation and embarking on a new phase of my career. This exciting

be no TGHS. Carole has been a constant and reliable source of inspiration, support and good advice, and as another former President, Steve Preston, put it, she is truly the "spirit and life force" of the Society. I cannot adequately express my admiration and appreciation for all that Arlene, Greg and Carole have done for me and for TGHS.

I am extremely proud of being part of all that TGHS has accomplished in these last eight years, especially the success of our long effort to establish historic districts in Glendale. And the organization itself is stronger than ever; membership has increased almost 50% in the last three years. But there is still much work left to be done. While preservation has become an accepted tool of our city's government, it has not yet become ingrained in our civic

Such change is good
for the organization;
the regular rotation of directors and officers
helps to keep TGHS sharp and vital.

professional transition is a direct result of my involvement in TGHS, and for that I will always be grateful.

I am grateful too for the people I've met and the friends I've made in the last eight years. I've had the privilege of working with many talented and dedicated Board members and volunteers, too many to list here, but three of them deserve special mention: My immediate predecessor as President, Arlene Vidor, was a fantastic mentor, an admirable role model and a pleasure to work with. She built the strong Board and organization that I was fortunate enough to inherit. I have also been fortunate in having the support of Greg Grammer as my Vice President for the last three years - the best sidekick a President could hope for. I could not have done this job without Greg's intelligence, leadership, diplomacy and good humor. And then there is our "founding mother" Carole Dougherty, without whom there would literally

culture and identity as it has in many other cities. Developer dollars still too often trump quality of life, and sustainable long-term planning is still too frequently sacrificed for short-term profit or political gain. The Society will need to grow bigger and stronger if it is to meet these challenges and play an even greater role in the future development of Glendale; we will need to mobilize more residents and raise greater sums of money to ensure that our voice continues to be heard. As the mantle of leadership is passed, I urge you to participate in this task and actively assist the new President and the Board of Directors in our shared commitment to preserving Glendale's heritage.

Thank you all for your support!

John LoCascio

President, 2008-2011

THE GLENDALE HISTORICAL SOCIETY Board of Directors

Effective to
October 12, 2011

PRESIDENT

John LoCascio
president@glendalehistorical.org

VICE PRESIDENT

Greg Grammer
greg.grammer@glendalehistorical.org

SECRETARY

Marty Bracciotti
marty.bracciotti@glendalehistorical.org

TREASURER

Sean Bersell
sean.bersell@glendalehistorical.org

PROGRAM COORDINATOR

Marcia Hanford
marcia.hanford@glendalehistorical.org

MEMBERSHIP & OUTREACH

Victoria Lasken
victoria.lasken@glendalehistorical.org

GRAPHIC DESIGN

Scott Lasken
scott.lasken@glendalehistorical.org

DIRECTORS AT LARGE

Margaret Hammond

Joe Selph

joe.selph@glendalehistorical.org

DOCTORS HOUSE DIRECTOR

Sonia Montejano
sonia.montejano@glendalehistorical.org

DOCTORS HOUSE ASSISTANT

DIRECTOR
Peter Rusch

NEWSLETTER LAYOUT

Carole Dougherty
ezdougherty@sbcglobal.net

CONTRIBUTORS

Marty Bracciotti
Greg Grammer
Scott Lasken
Victoria Lasken
John LoCascio
Sonia Montejano

Joe Selph

Write us at:
TGHS

Post Office Box 4173
Glendale CA 91202

Visit us on the web at:
www.glendalehistorical.org

The Glendale Historical
Society quarterly newsletter
is the official publication
of the Society

Report

Annual Meeting

By Joe Selph

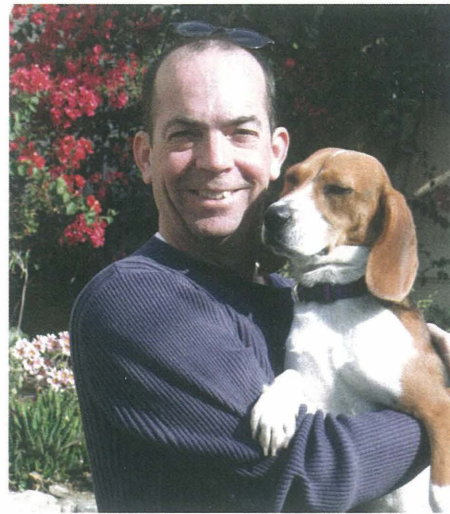
The Annual Membership Meeting of TGHS was held September 17 at Forest Lawn Memorial-Park in Glendale. Several members shared that it was their first visit to Forest Lawn, which has been in Glendale for more than 100 years. The beauty of the vast setting, along with numerous art collections, will find many making repeat visits to this iconic institution.

The meeting began with a presentation by Jim Wilke, Senior Vice President of Forest Lawn, on the history of Forest Lawn's buildings, followed by a question and answer session. Treasurer Sean Bersell announced the receipt of a check from The Community Foundation of the Verdugos in the amount of \$2,623.30, which represents the interest we have earned over the last two years from our endowment fund. TGHS President John LoCascio conducted the business portion of the meeting, where members voted to accept the 2011-2012 budget, approved updates to the bylaws, and elected the following five incumbent directors for new 2-year terms: Sean Bersell, Marty Bracciotti, Greg Grammer, Margaret Hammond, and Marcia Hanford.

After the meeting, members enjoyed champagne and a Mediterranean-themed buffet, along with the delicious view from this prime hilltop location. Forest Lawn Museum's newest exhibition "Adelante! Mexican American Artists: 1960's and Beyond" was also open for members to visit. This evening was a wonderful reminder of the history and beauty of Glendale. TGHS is extremely grateful to Forest Lawn for providing their facilities and staff to host our meeting after their normal business hours.



2011-2012 Board members from left: Victoria Lasken, Marcia Hanford, Greg Grammer, Scott Lasken, Margaret Hammond, John LoCascio, Joe Selph, Marty Bracciotti and Sean Bersell



Sean Bersell and his beagle Alice who was adopted from the Pasadena Humane Society

TGHS Elects New Treasurer

Meet Sean Bersell

Sean Bersell, newly elected TGHS treasurer, brings more than 25 years of advocacy and public relations experience to the Board of Directors.

Sean started his professional career in 1985 as Legislative Counsel for U.S. Senator Pete V. Domenici (NM). His portfolio included national parks and historic preservation issues, and he was the Senator's lead staff on the creation of El Malpais and Petroglyph National Monuments in New Mexico.

From 1991 to 1993, Sean served as the assistant director of the National Park Service in charge of the Office of Legislative and Congressional Affairs. In 1993, Sean joined the government relations staff of the 58,000-member American Institute of Chemical Engineers (AIChE) and eventually became senior director, in charge of public affairs for the professional society.

Currently, Sean is Vice President, Public Affairs, for the Entertainment Merchants Association (EMA), the national trade association for the retailers and distributors of DVDs, Blu-ray Discs, and video games. He is responsible for the association's government affairs and public relations programs. In that capacity, he represents EMA's membership before the U.S. Congress, state legislatures, and local governments on issues that impact the home entertainment industry. Sean also implements public relations strategies for EMA and serves as the association's spokesperson for the media.

Sean and his siblings were child actors. He was featured in television commercials and the movie *Tony Rome* with Frank Sinatra. He was in the five-episode pilot series for *Sesame Street*, but his contract was not picked up for the show because he was too old - at the age of 10!

Sean is a graduate of Dartmouth College and the University of New Mexico School of Law. He and his wife Heather Norris live with their two dogs, Gertrude and Alice, in a 1925 Spanish Eclectic bungalow in the Casa Verdugo neighborhood.

Preservation Update

Historic Districts

Glendale's three new historic district applications continue to move through the city's review and approval process. Planning staff have reviewed the final draft of the Rossmoyne historic resources survey and on October 24 will submit it for review and approval by the Historic Preservation Commission. If approved by the HPC, the application will advance into the final petition and outreach phase.

The historic preservation staff is also nearing completion on their update of portions of the old Cumberland Heights historic resources survey, which will serve as the survey for the new North Cumberland Heights historic district application. When completed, the survey will be submitted for peer review by the State Office of Historic Preservation and may be finalized for HPC approval by the end of this year.

The field work for the Brockmont Park historic resources survey is currently underway. If approved, these three applications will join Royal Boulevard, Ard Eevin Highlands and Cottage Grove to give Glendale a total of six historic districts collectively encompassing almost nine hundred properties.

Americana Expansion

TGHS continues to work with Caruso Affiliated on the design of the new Nordstrom department store, which will incorporate the relocated façade of the 1928 Mission Revival-style building that currently occupies the site. The plans will include historical displays along the adjacent pedestrian walkway connecting Colorado Street with Caruso Way. The project is scheduled for completion in the autumn of 2013.

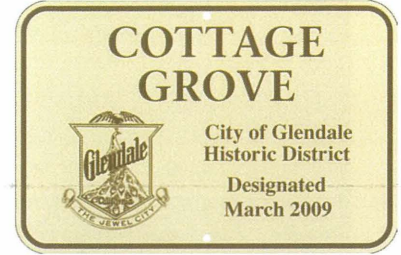
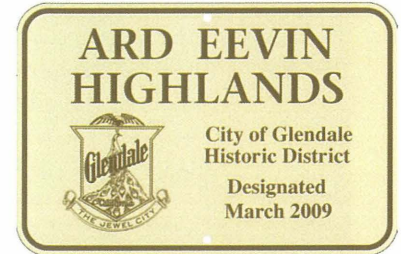
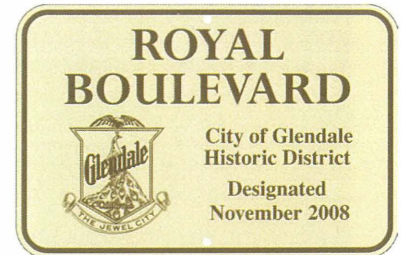
Grand Central Air Terminal

The Walt Disney Company has requested a five-year extension of its agreement with the Glendale Redevelopment Agency for the rehabilitation of the 1928 Grand Central Air Terminal. The spectacular building, a lavish combination of Spanish Colonial and Art Deco elements, was the first major airport serving the Los Angeles area. Closed and abandoned since 1959, the property was purchased by Disney in 1994 to expand its Dreamworks campus. The original development contract requires Disney to restore the building, inside and out, by 2015. TGHS will closely monitor this situation to ensure the long-term preservation of this very fragile gem.

Glendale Courthouse

The Administrative Office of the Courts (AOC) has released the Draft Environmental Impact Report (EIR) for the proposed new Glendale Courthouse at Broadway and Glendale Avenue. The existing courthouse on the site, designed by architect Arthur Wolfe in 1959, is one of the most significant mid-20th century buildings in Glendale and has been determined to be eligible for listing on the National Register of Historic Places. The proposed project would attempt to preserve the Courthouse's significant character-defining features but would require the demolition of most of the building to make way for a new five-story, 11,000 square foot facility.

TGHS will continue to work with the City, the AOC and the Los Angeles Conservancy to encourage a creative solution that would adapt the existing courthouse with a sensitively designed addition that would maintain the building's eligibility for listing as a historic resource.



PHOTOS CLOCKWISE: Signage for historic districts. Photo courtesy Planning Department, City of Glendale

1928 Mission Revival building at 230 South Orange Street. Photo John LoCascio
Grand Central Air Terminal 1920s. Photo courtesy Special Collections, Glendale Public Library

Glendale Courthouse. Photo Marty Braciotti

dates

By John LoCascio





Facebook Challenge

By Victoria Lasken

Thank you to all who have joined our Facebook page! To date, we have 230 Facebook friends. In the year that I have been on the Board, interacting with those who are interested in what The Glendale Historical Society does and photographing our historical architecture for our Facebook page and the graphic design projects my husband and fellow Board member Scott Lasken has contributed, has been fun and extremely rewarding for me.

Educating the general public about what The Glendale Historical Society stands for is more important now than ever and we can make that difference.

The more who understand what we do, the stronger we become within our community; and the stronger our voice becomes, the more we can accomplish for historic preservation and advocacy in Glendale. This strength sets an example for other communities (even those in other countries!) who are watching what we do and they will follow suit.

Rather than standing by and watching some of the changes in our city and feeling disappointed and powerless, why not ask your friends and neighbors to “like” our Facebook page and suggest they become members of The Glendale Historical Society?

Those of you who are already members, why not become a volunteer for our events and meet new friends within your community with whom you share a common interest?

As you know, we have our annual home tour on October 2 which promises to be a fantastic event and I can promise you that the rewards of volunteering far outweigh the “inconvenience” of giving up a couple of hours every now and then. Scott and I are continually impressed with the quality group of people we have met and some of them have become close and cherished friends.

Vice President Greg Grammer has asked me to challenge the members of The Glendale Historical Society to set a goal for 500 Facebook friends and we can easily accomplish that if all of you “like” our page! Let’s use it as forum to exchange ideas and answer questions and be the change we want to see.

Thanks again for the opportunity to serve our community; it is a pleasure and a privilege.



Bike Ride participants gather in front of the Glendale train depot. Photo: Marc Stirdivant

TGHS Sponsors

Another Successful Historic Bike Ride

By Marty Bracciotti

On August 13, over 70 riders joined TGHS for another of its historic-themed (and fun!) bike rides. The weather was perfect, and the spirited riders represented a nice cross-section of our community. The 14-mile bike tour began at the beautiful Glendale Train Station. Bikers took the LA River bike path to Glendale’s Grand Central Air Terminal where they learned of the interesting history of LA’s first airport. A rare interior tour of the Goode House (one of two surviving examples of Victorian Queen Ann-Eastlake architecture in Glendale) followed. The tour made stops at the Hotel Glendale, the Adams Square Mini-Park (featuring the 1936 Richfield Streamline Modern gas station), Cottage Grove historic district, Richardson House (Glendale’s oldest wood-framed home), and the grand entrance to Forest Lawn. Also along the tour were other interesting sites and many people that gave riders encouraging smiles, waves, and even a few cheers. Many thanks go out to the organizers and leaders of this successful event, including: TGHS members Scott Lowe and Board Member Marty Bracciotti, Colin Bogart of the LA County Bicycle Coalition (co-sponsor), and Marc Stirdivant of the Glendale Community Services and Parks (co-sponsor).

WELCOME

NEW & RENEWING MEMBERS
JUNE – AUGUST 2011

VERDUGO PATRON (\$250)

Sean Bersell &
Heather Norris - U

TROPICO PATRON (\$100)

Lila & Rich Ramirez - U
Leanne Reynolds - R
Joe Selph &
Marty Bracciotti - R

SUSTAINING (\$50)

Glendale Days of the
Verdugos Assoc, Inc. - N
Byron & Louise Peebles - R
Susan Wolfson - R

FAMILY/DUAL (\$40)

Guy DeConte &
Ammar Kharouf - N
Leticia Gonzalez &
Ken Batchelor - R
Patricia Marsh &
Michael Morgan - R
Steven & Cecilia Myles - R
Allan & Desiree Shier - R
Beth Tapper - R
Bonnie Trueman - N

INDIVIDUAL (\$25)

Jeffery Holley - N
Jack Kandel - R
Stephanie Reich - N

SENIOR/STUDENT (\$15)

Betty Albu - R
Shirley Darling - R
Michael Locke - N
Diane Spurlock - R
Sandra Weggeland - R

PAST PRESIDENTS

LIFE MEMBERSHIP
Deborah Dentler
Carole Dougherty
Andrea Humberger
Marie Luft
Steve Preston
Bill Shepherd
David Smith
Arlene Vidor

N - New Member

R - Renewing Member

U - Upgrading Member

**Please consider a membership
upgrade the next time you renew.**

VOLUNTEERS NEEDED

By Sonia Montejano

If you have ever considered volunteering in your community this is the right time, as the Doctors House is in need of volunteers. For two hours each month you will interact with visitors to the house, and meet a wonderful team of volunteers.

No experience is necessary! Each new volunteer is trained, learning not just the history of the house but also about Glendale history, Victorian fashion, home decor, architecture and Victorian customs.

Please express your interest to volunteer today. Contact TGHS at 818-242-7447 or email TGHS@glendalehistorical.org.

Glendale Public Library: History Drive 2011

Check Out Historic Glendale Photos Online

The Glendale Public Library has posted images from the inaugural 2009 History Drive on Flickr:
www.flickr.com/photos/glendalepubliclibrary/6101668476

The library invites the public to help celebrate and collect information on the images.

Complete information for the project can be found on the Library's website: library.ci.glendale.ca.us/historydrive.asp

Join The Glendale Historical Society and Support Historic Preservation in Our Community

THE SOCIETY IS A NON-PROFIT tax exempt organization and we encourage you to join and volunteer. Please complete this form and mail it with a check payable to

The Glendale Historical Society, PO Box 4173, Glendale CA 91202

Jewel City Patron (\$500)

Verdugo Patron (\$250)

Tropico Patron (\$100)

Sustaining (\$50)

Family/Dual (\$40)

Individual (\$25)

Individual Senior or Student (\$15)

Nonprofit (\$35)

*Nonprofit organizations are encouraged
to join TGHS as Associate Members
(No voting rights)*

Name _____ Phone _____

Street Address _____

City/Zip _____ Email Address _____

WANT TO GET INVOLVED? WHAT ARE YOUR INTERESTS?

Preservation advocacy

Historic Districting

Fundraising

Special events/Tours

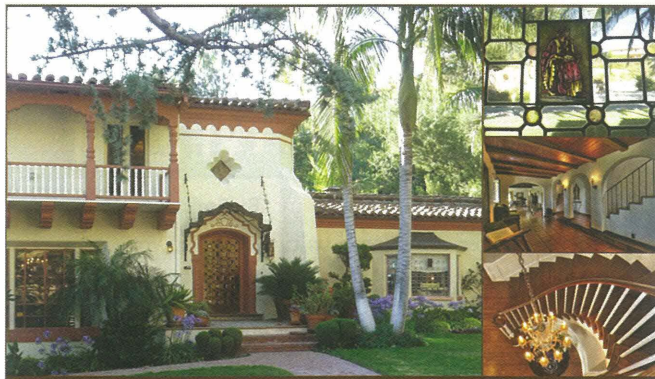
Outreach/Education

Doctors House volunteers

Historic research/Surveys

Archiving/Organizing

Membership/Outreach



GLENDALE GEMS

Historic Homes of the Jewel City

Sunday, October 2, 2011 • 11:00 am - 4:00 pm



Armen Sarkissian and Sally MacAller hosted an afternoon gathering for realtors to learn the benefits of preservation, held at Sally's National Register of Historic Places home. Photo: TGHS president John LoCascio, Armen Sarkissian, TGHS past president Arlene Vigoi, Sally MacAller, City of Glendale Planning Division presenter Jay Platt.

2011 EVENTS CALENDAR

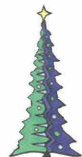
OCTOBER 2 • 11 am - 4 pm
GLENDALE GEMS: Historic Homes of the Jewel City
 Tour of 5 homes listed on
 Glendale's Historic Register



DECEMBER 10 AND 17
 6:30 - 8:30 pm
CANDLELIGHT TOURS
 Doctors House

DECEMBER 11 • 2- 6 pm
PRE-RENOVATION PARTY
 Brand Library and Art Gallery
 Members-only pre-renovation party with
 Associates of Brand Library; selected books,
 music, works of art will be available for purchase

DECEMBER 18
HOLIDAY MEMBERS PARTY
 McCall's House
 a private residence on
 Glendale's Historic Register



Glendale Historical Society
 PO Box 5111
 Glendale CA 91202
 www.glendalehistorical.org



The GLENDALE HISTORICAL SOCIETY ENDOWMENT FUND

The Community Foundation of the Verdugos maintains an endowment to benefit The Glendale Historical Society. The Endowment was initiated by former TGHS treasurer Richard Montgomery. Since his death, a number of contributions have been made to our endowment fund. An especially large one was made to it by bequest of former president Dr. Robert Newcomb. An anonymous donor contributes yearly.

Please consider making a bequest in your will to the Community Foundation to benefit TGHS or make donations at any time.

Community Foundation of the Verdugos
 330 Arden Avenue, Suite 130
 Glendale, CA 91203
 Phone: (818) 241-8040
 Fax: (818) 241-8045
 Email: info@communityfoundationoftheverdugos.org