
The Glendale Historical Society

Celebrating Our History and Conserving Our Heritage

Winter 2011

TGHS Submits Comments on Glendale Courthouse Draft EIR

By John LoCascio and Greg Grammer

The Glendale Historical Society, along with the Los Angeles Conservancy and the California Preservation Foundation, submitted comments on the Draft Environmental Impact Report (Draft EIR) for the proposed new Glendale County Courthouse project.

TGHS strongly supports the efforts of the Administrative Office of the Courts (AOC) to maintain the Courthouse in its current location, and welcomes the AOC's stated objective to retain key historic features of the existing Courthouse. However, based on our review of the Draft EIR, we are concerned that the AOC is not fully committed to preserving the Courthouse's architectural integrity and its eligibility for listing as a historic resource, both on the California Register and the National Register, and that extensive or complete demolition remains a possibility.

The existing 1959 Glendale Courthouse, designed by architect Arthur Wolfe, is one of the most significant and distinctive examples of mid-20th century Modern architecture in Glendale and is a prominent feature of the City's civic corridor. It features strong rectilinear concrete forms contrasted with a serpentine brick wall, mosaic tile-clad columns, glass walls and a custom ceramic sculpture representing Liberty,

COURTHOUSE EIR continued on page 6

TGHS HOLIDAY PARTY information is included on a flyer in this newsletter...if you are a current member. If not, there's still time to become one. Then you'll be invited, too!

This party closes out a year that saw TGHS present a variety of events. Think about pitching in to assist with an event or two in 2012. The more helpers we have, the more we can do! Drop a note to events@glendalehistorical.org or leave a message at 818-242-7447.



Photo: Jeri Anderson

Treasurer Sean Bersell and former President John LoCascio happily display a check from the Community Foundation of the Verdugos at the Annual Meeting.

TGHS Board Elects 2011-12 officers

By Sean Bersell

The Glendale Historical Society will be led for the next year by Greg Grammer, who has served as Vice President for the past three years. Grammer replaced John LoCascio, who stepped down as President but will stay on the Board of Directors for the remainder of his term.

"I look forward to ensuring that The Glendale Historical Society remains an effective voice for the preservation and promotion of Glendale's rich history and architectural heritage," Grammer declared. "Foremost for us in the coming year is to continue to press the state Administrative Office of the Courts to maintain key architectural elements into any new design of the Glendale county courthouse. We also look forward to reaching out to The Walt Disney Company on the pending restoration of the historic Grand Central Air Terminal, and continuing to work closely with Caruso Affiliated on the incorporation of the 1928 Mission Revival building façade into The Americana at Brand.

"Expanding the number of historic districts and landmark designations in the city, presenting home tours and special events to showcase Glendale's cherished and diverse architecture, and growing our membership will also continue to be top priorities," added Grammer.

2011-12 OFFICERS continued on page 6

THE GLENDALE HISTORICAL
SOCIETY
Board of Directors

PRESIDENT

Greg Grammer
greg.grammer@glendalehistorical.org

VICE PRESIDENT

Victoria Lasken
victoria.lasken@glendalehistorical.org

SECRETARY

Marty Bracciotti
marty.bracciotti@glendalehistorical.org

TREASURER

Sean Bersell
sean.bersell@glendalehistorical.org

IMMEDIATE PAST PRESIDENT

John LoCascio
john.locascio@glendalehistorical.org

PROGRAM COORDINATOR

Marcia Hanford
marcia.hanford@glendalehistorical.org

MEMBERSHIP & OUTREACH

Victoria Lasken
victoria.lasken@glendalehistorical.org

GRAPHIC DESIGN

Scott Lasken
scott.lasken@glendalehistorical.org

DIRECTORS AT LARGE

Margaret Hammond

Joe Selph

joe.selph@glendalehistorical.org

DOCTORS HOUSE DIRECTOR

Sonia Montejano
sonia.montejano@glendalehistorical.org

DOCTORS HOUSE ASSISTANT DIRECTOR

Peter Rusch

NEWSLETTER LAYOUT

Carole Dougherty
czdougherty@sbcglobal.net

CONTRIBUTORS

Sean Bersell
Greg Grammer
Marcia Hanford
Scott Lasken
Victoria Lasken
John LoCascio

Write us at:

TGHS

Post Office Box 4173
Glendale CA 91202

Visit us on the web at:
www.glendalehistorical.org

The Glendale Historical
Society quarterly newsletter
is the official publication
of the Society

President's Message



Photo: Simon Wright

Greg Grammer,
newly elected TGHS president

For the last three years, one of my favorite features of the TGHS quarterly newsletter has been the President's Message. Our Immediate Past President, **John LoCascio**, is not only a talented architect, now working for a leading historic preservation planning and development firm, he is also a gifted and witty writer. As we gathered our articles for each season's newsletter, I always looked forward to reading John's charmingly pithy and insightful commentary. So, here I am, your new President addressing you for the first time, staring at the blank page on my computer screen and thinking about John's best essays, and asking myself ... how am I supposed to follow that!!? Fortunately for me, and for all of us, John will remain on the Board for the remainder of his current term. While he will no longer be serving as President, John will continue to play a crucial role in the organization, particularly in the pivotal area of preservation advocacy.

John LoCascio's Leadership

John was instrumental in getting the City of Glendale to adopt the Historic District Overlay Zone Ordinance, which established a process for the creation of historic districts. During John's tenure, we have seen the movement flourish, with the establishment of two additional historic districts (Cottage Grove and Ard Eevin Highlands), and

three more potential districts working their way through the process (Rossmoyne, North Cumberland Heights and Brockmont Park). Since the end of 2008, an impressive 23 homes and one commercial building have been added to the Glendale Register of Historic Resources. Earlier this year, we established a Windows Task Force (WTF!) in an effort to encourage the City to implement meaningful window replacement guidelines, especially for our older, established neighborhoods, and held a well-attended workshop on window repair and restoration. Last year, in celebration of the 30th anniversary of the relocation of the Doctors House, John led the effort to create three permanent exhibits at the Doctors House Museum to illustrate the House's significance in our City's early history and the important role it played in Glendale's burgeoning historic preservation movement. Our membership has grown significantly over the past three years and, as evidenced by the stunning success of this year's Home Tour, awareness of our mission to promote and preserve Glendale's rich history and architectural heritage has steadily increased. TGHS would not have become the well-respected and professional organization that it is today without John's guidance and leadership.

A Strong Team Carries On

As we build on these successes and continue to strengthen our voice and the organization, I am so pleased to have a strong team of individuals serving with me on the Board of Directors. Our new Vice President, **Victoria Lasken**, will continue to serve as Chair of the Membership & Outreach Committee, reaching out to new and renewing members and coordinating a cadre of volunteers for our events. **Marty Bracciotti** will remain as Secretary, preparing our monthly agendas and minutes, keeping us all organized, and making the arrangements for our popu-

President's Message continued

lar historic bike rides. **Sean Bersell** will continue to serve as Treasurer, a role we are all so grateful that he agreed to take on earlier this year. He will also assume publicity and marketing responsibilities as the new Chair of the Communications Committee. **Scott Lasken** will continue to assist in that effort, working his graphic design magic to make our promotional and educational materials look professional and attractive. **Marcia Hanford**, with the assistance of **Joe Selph** and **Victoria Lasken**, will carry on in her outstanding role as Chair of the Events Committee, responsible for planning and organizing our activities throughout the year. And long-time Board Member **Margaret Hammond** will be there to remind us all of our heritage and to help out at each and every function. We are also greatly assisted by a dynamic duo, **Sonia Montejano** and **Peter Rusch**, who will continue to serve as the Director and Assistant Director of the Doctors House, respectively, ensuring that its Victorian charm will continue to thrive and attract new crowds. Of course, we wouldn't be able to accomplish any of these things without the participation of our members who serve as docents, volunteers and on various committees. However, while it may not always seem apparent, the fact is we operate on a skeleton crew. Think of what more we could accomplish if we had even more active participants!

How I Got Involved with TGHS

I was recently asked how I got involved in TGHS. I had been visiting family in Glendale since the late 1980s, ultimately moving here in 1995, and had quickly become concerned about inappropriate home alterations and the unfortunate but all too common installation of vinyl replacement windows, and how that affected the integrity of our charming neighborhoods. Shortly after my partner and I moved into our house in 2005, I met then-TGHS Board Secretary **Elaine Wilkerson** who was

Among other things, [Former President] John LoCascio was instrumental in getting the City of Glendale to adopt the Historic District Overlay Zone Ordinance and worked to develop the Windows Task Force, an effort to encourage the City to implement meaningful window replacement guidelines. John led the effort to create three permanent exhibits at the Doctors House Museum to illustrate the House's significance in our City's early history and the important role it played in Glendale's burgeoning historic preservation movement.

spearheading an effort on Royal Boulevard to establish Glendale's first historic district. Concerned about preserving the character (not to mention the property values) of my neighborhood, I knew that I had to get involved. Soon after, I was approached by then-TGHS Board President **Arlene Vidor** (now Chair of the City's Historic Preservation Commission) about including our house on an upcoming TGHS Home Tour. Of course, we were more than willing to open our doors to do our part to raise awareness of Glendale's architectural heritage and the importance of historic districts. I even volunteered to assist on the day of the tour and was flattered when asked to serve on the Board of Directors. Needless to say, it has been an extremely rewarding experience. I've met several wonderful, like-minded people, many of whom have become treasured friends.

An Invitation to New Members

To the 45 new members who joined TGHS since the publication of our last newsletter, I thank you for your support and encourage you to participate in TGHS and help boost our preservation efforts. Certainly, if I can do it, anyone can. Please feel free to contact me at greg.grammer@glendalehistorical.org to discuss how you can get involved - or better yet, let's talk at the upcoming Brand Library event on December 11 or at our holiday party on December 18. And who knows? A few years from now you may be sitting where I am, feeling satisfied and relieved that you just completed your first presidential communication.

Best wishes for a happy and healthy holiday season.

Greg Grammer

President

November 2011

GLENDALE GEMS HOME TOUR A HUGE SUCCESS!

By Greg Grammer



An enormous “thank you” to all who came out on October 2 in support of our Fall 2011 Home Tour, “Glendale Gems: Historic Homes of the Jewel City.” This year’s tour was an overwhelming success, attracting approximately 350 attendees and allowing us to showcase a variety of architecturally significant homes listed on the Glendale Register of Historic Resources.

The Home Tour began at the historic Brand Library, housed in the grand El Miradero mansion that early developer Leslie C. Brand built in 1903. Ticket buyers were treated to docent-led tours of four private homes, including a 1926 Spanish Colonial Revival designed by celebrated architect Paul R. Williams, a 1936 Spanish Colonial Revival with Art Deco influences designed by Los Angeles architect William Barber, a castle-like Norman Revival built in 1926 by prominent Glendale contractor John T. Bibb, and a 1936 American Colonial Revival designed by renowned local architect Merrill W. Baird.



This year’s tour would not have been possible without the gracious homeowners who so generously opened the doors of their lovely homes, and the many dedicated volunteers and docents who worked tirelessly to ensure that the day went smoothly. We can’t thank you enough.

Our gratitude also extends to the local businesses who supported the tour by placing advertisements in our brochure or with in-kind contributions, including: Sue Eller, Glendale Adventist Medical Center, The Wine Vault, Shannon Cistulli, G&C Properties, Porto’s, Alphonso Lascano, Historic Resources Group, Frank DePietro and Sons, Addora Beall, Rhett Beavers, Brian Cornelius & Caruso Affiliated, Chapman Business & Communication, Divina Cucina, Fast Frame of La Canada, Franco Noravian, Glen Oaks Escrow, Guillaume Lemoine/Picture This Land, The Heritage Group, Jennie Manders, Kathy Lefkovitz, Larry Tison & Associates, Pet Rush, Rick Barnes, Sheldon Baker, and Window Restoration & Repair.

We are already hard at work lining up spectacular homes for next year’s tour - so stay tuned!

From top: Endicott Residence, photo by Victoria Lasken; Daves Residence, photo by Elizabeth Cohen; Baird House, photo by Simon Wright; Lane Residence, photo by Victoria Lasken





A Dog on a Mission



HELLO, my name is Ebony. I may be a small dog, but I have discerning taste in architecture and it has turned out that I'm one lucky guy since Glendale abounds with great houses of special significance.

My favorite daily walks include the historic area of Royal Boulevard and the proposed historic district in Rossmoyne, and the proposed historic district in Cumberland Heights. The first two areas are for my weekday strolls and the third is reserved for weekends, where I can really stretch my paws. When I walk on Royal I sometimes expand to Imperial Drive where my nose takes me to even more lovely homes to admire.

You can imagine my surprise when historic signs began springing up in my favorite neighborhoods - it only confirmed my good taste! Then, when historic bronze plaques began to appear on the houses where my friends live, it was a further testament to my excellent taste in architecture and humans. My new friends introduced me to The Glendale Historical Society, which I wholeheartedly embraced and have tried to promote by bringing in new members.

My affiliation with the Society began by closely following the restoration of the Lewis House on Royal Boulevard. Upon completion, I was invited to visit that beautiful home and also to join the Society. From then on I met a chain of interesting new people (and dogs), and subsequently joined the Society. From that point on I made it my mission to bring in new members!

On Mountain Street my walks are always very social and I usually see my dear friends Chiquita and Crumpet, while Gracie lives in a nice Spanish house on Cordova; then there is Sammy the Samoyed, Rex on Rossmoyne, and I can't forget Riley on Princes Drive. I am sad that my special friend Lola has moved to Montecito Park, so I don't see her as often.

If you ever see me in one of the historic neighborhoods, please stop by and visit with me so I can let you know about The Glendale Historical Society and the great houses in our city.

I can assure you I will keep you updated on my endeavors and all the new friends I meet. In the meantime, have a very Happy Holiday Season and Prosperous New Year!!!

THE GLENDALE HISTORICAL SOCIETY CORDIALLY INVITES YOU TO

An Elegant, Swellelegant Holiday Affair!

TGHS Members Only

CELEBRATE THE SEASON WITH GOOD
FRIENDS AND GOOD CHEER!

Please join us for champagne and
hors d'oeuvres and a tour of the
historic *McCall's House*, a 1936
French Revival home designed
by Glendale's own Merrill W.
Baird and featured as the
"Home of the Month" in the
September 1936 issue of
McCall's Magazine.

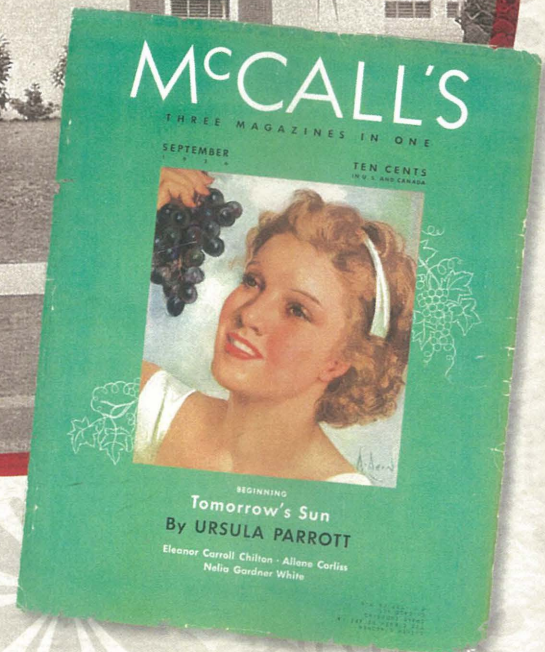
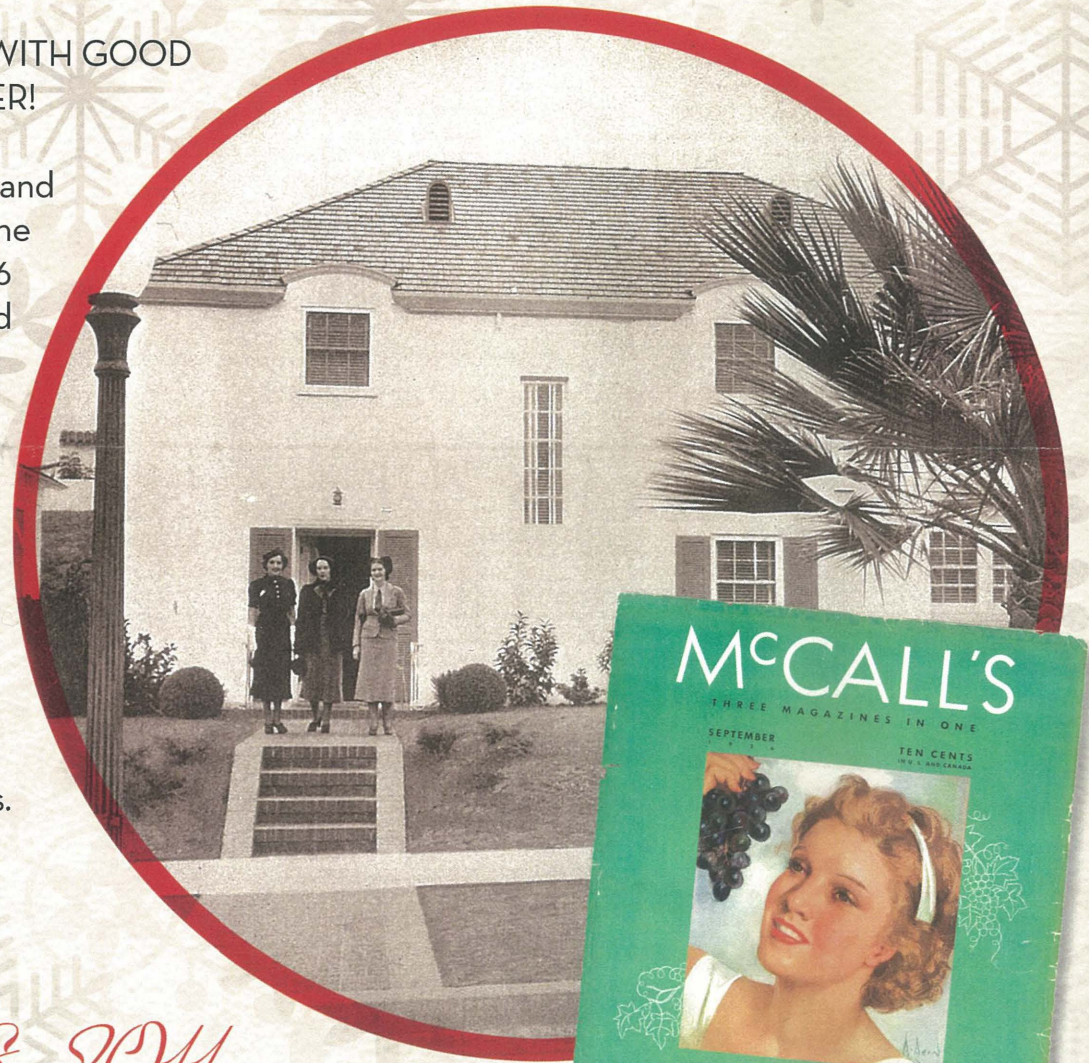
McCall's House is the
residence of our new
President Greg Grammer
and is listed on the Glendale
Register of Historic Resources.

Sunday
December 18, 2011
4 - 6:30 pm

McCall's House (GHR No. 75)
1455 Royal Boulevard, Glendale, California 91207

RSVP by December 10: events@glendalehistorical.org or 818-242-7447

www.glendalehistorical.org



IT'S A WONDERFUL BRAND

A special invitation to celebrate the upcoming renovation of the historic Brand Library (commencing early 2012)

Sunday, December 11, 2 pm – 6 pm

Brand Library & Art Center Galleries
1601 West Mountain Street, Glendale, CA 91201

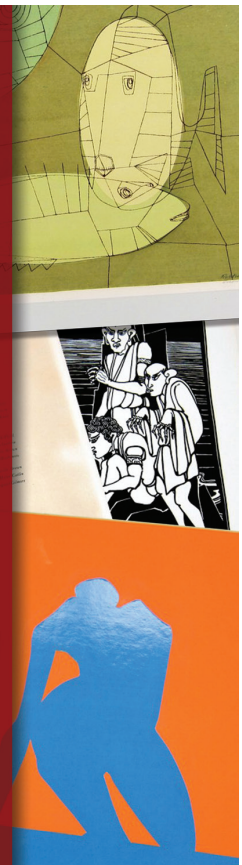
- Pre-Renovation Art Sale
- El Miradero Tour
- Refreshments

Complimentary admission to members of Associates of Brand Library & Art Center, The Glendale Historical Society and Friends of the Glendale Public Library

Non-members of these three sponsoring organizations are invited to attend for a minimum donation of \$10

All proceeds from the sale go to support the Brand renovation.

The Associates of Brand Library & Art Center is a 501(c)3 non-profit organization. Donations are tax deductible as allowed by law. The Brand Library is a section of The Glendale Public Library.
www.associatesofbrand.org



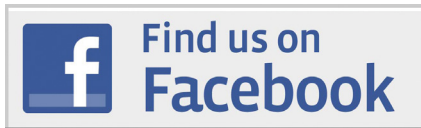
THIS YEAR, RESOLVE TO GET INVOLVED

By Victoria Lasken

I know there are many talented TGHS members out there, and we are always in need of assistance with event planning and organizing, communications and marketing, preservation advocacy, and membership and outreach.

We are also looking for volunteers to give docent-led tours at the Victorian Doctors House once a month, and to help out at our annual Home Tour. If you have any special skills or you simply want to get out there and meet new people within your community, please let me know!

Please email me at: victoria.lasken@glendalehistorical.org



COURTHOUSE EIR continued from page 1

Freedom and Justice. Interior elements include fine terrazzo floors, a floating staircase, original lighting fixtures and curved wood benches.

There will be another opportunity for the public to comment once the Final EIR is released. At that time, we will be asking our members to voice their concerns about the fate of this important building. For more information about the proposed project, visit the Preservation Alerts on our website or go to www.courts.ca.gov/facilities-la-glendale.htm.



The architectural integrity of the Glendale Courthouse may be in jeopardy.

2011-12 OFFICERS continued from page 1

Grammer has chaired TGHS' Membership Committee, Communications Committee, and Home Tour Committee. He played an active role in the formation of the Royal Boulevard Historic District, Glendale's first historic district. In 2009, he and his partner Simon successfully nominated their 1936 French Revival home, *McCall's House*, to the Glendale Register of Historic Resources. Greg has a bachelor's degree in government/journalism, and a master's degree in public administration. He is assistant city manager of the City of Rolling Hills Estates.

Joining Grammer as officers for 2011-12 are **Victoria Lasken**, vice president; **Marty Bracciotti**, secretary; and **Sean Bersell**, treasurer.

In addition to the officers and LoCascio, the other members of the TGHS Board of Directors for 2011-12 are **Margaret Hammond**, **Marcia Hanford**, **Scott Lasken**, and **Joe Selph**.

WELCOME

NEW & RENEWING MEMBERS SEPTEMBER-OCTOBER 2011

VERDUGO PATRON (\$250)

David B. Ahern - U
Milena Dostanich - R
Greg Grammer &
Simon Wright - U

TROPICO PATRON (\$100)

Howard Anderson - R
Shannon Cistulli - R
Michael Dougherty - N
Shirley Ann Hill - R
Scott & Victoria Lasken - U
Sally MacAller - R
Sonia Montejano - U
Jeanette Stirdivant - U
William & Leann Warner - R

SUSTAINING (\$50)

Dan & Judy Cabrera - R
Mr. & Mrs. John S. Clauss Jr - R
Doyle Kutch - R
Sheila Murray - R
Vic Pallos - R
Donald & Beatrice Penniall - R

FAMILY/DUAL (\$40)

James Achor &
Heather Tom - N
Derek Arteta &
Brian Haworth - N
Paul & Marshall Ayers - R
Pauline Callahan &
Lloyd Ferguson - N
Shannon Davis - N
Heather Dennis - N
Romeo &
Clemencia Garza - N

Richard & Carol Lee - R
Holly Keenan & Jordan Levine - R
J Alexandra Loew - N
Eileen & John Manus - R
Warren Mays - N

Patricia Messina &
Terrance Hines - R
Rebecca Maxwell &
Elizabeth Morris - N
Steve & Maria Reed - N
Celina Rostam - N
Scott Smissen &
Don Snyder - N
Lee & Francesca Smith - N
Janine Waldbaum &
Pete Vanderveen - N
Halsey & Jackie Wickser - N

INDIVIDUAL (\$25)

Alan Adams - N
Rosemarie Barraza - R
Ruth Campbell - R
Russell Cinque Jr - R
Sona Davitan - R
Judy Farris-Phares - R
Patricia DiGennaro - N
Ellen Gershen - N
Joyce Goodwin - N
Mary Rose Grim - U
Kelly Haake - R
Margaret Hammond - R
Carina Heritage - N
Zoë Howard - N
Connie Humberger - R
Chris Huntley - N
Shaun Khojayan - N

Renee Leask - R
Dominique Lopez - N
Patricia Mack - N
Sylvia Mardirosian - N
Josephine Moukhtar - R
Wendy Myers - N
Marilyn (Mimi) Plutae - R
Ray Podesta - R
Ruth Priest - R
Erik Reppe - N
Armen Sarkissian - N
Patty Silversher - R
E. Jean Simone - N
Frank Sumen - N
Dorothy Sundbye - R
Susan Sylvis - R
Corey Whelpley - N
Donna Whittlin - N
Christin Wills - N
Katherine Yamada - R
Victor Youssefian - N
Kendyl Young - N

SENIOR/STUDENT (\$15)

Karen Bartl-Grammer - R
Aleck Bartrosouf - N
Virginia Bengston - R
Mary Chaffee - N
Sean & Christie Crahan - N
Merry Franzen - R
Sandra Goff - R
Victoria Gorjian - R
Beverly Heyler - R
Ben Hubbard - R
Anne Leichtfried - R
Dorothy Montapert - R

Marilyn Oliver
Maureen &
Sheridan Palladini - N
Charles Perry - R
Mary Ann Prelock - R
Terry Richman - R
Kathleen Schumm - N
Frank & Bonnie Tortorelli - R
Bittersweet "Bea" Wojtyla - N
Pat Wright - R
Odette Zakarian - R

PAST PRESIDENTS

LIFE MEMBERSHIP
Deborah Dentler
Carole Dougherty
Andrea Humberger
John LoCascio
Marie Luft
Steve Preston
Bill Shepherd
David Smith
Arlene Vidor

Please consider a membership upgrade the next time you renew.

N - New Member
R - Renewing Member
U - Upgrading Member

Join The Glendale Historical Society and Support Historic Preservation in Our Community

THE SOCIETY IS A NON-PROFIT tax exempt organization and we encourage you to join and volunteer. Please complete this form and mail it with a check payable to

The Glendale Historical Society, PO Box 4173, Glendale CA 91202

Jewel City Patron (\$500)

Verdugo Patron (\$250)

Tropico Patron (\$100)

Sustaining (\$50)

Family/Dual (\$40)

Individual (\$25)

Individual Senior or Student (\$15)

Nonprofit (\$35)

Nonprofit organizations are encouraged to join TGHS as Associate Members (No voting rights)

Name _____ Phone _____

Street Address _____

City/Zip _____ Email Address _____

WANT TO GET INVOLVED? WHAT ARE YOUR INTERESTS?

Preservation advocacy

Historic Districting

Fundraising

Special events/Tours

Outreach/Education

Doctors House volunteers

Historic research/Surveys

Archiving/Organizing

Membership/Outreach

The
GLENDALE HISTORICAL SOCIETY
ENDOWMENT FUND

The Community Foundation of the Verdugos maintains an endowment to benefit The Glendale Historical Society. The Endowment was initiated by former TGHS treasurer Richard Montgomery. Since his death, a number of contributions have been made to our endowment fund. An especially large one was made to it by bequest of former president Dr. Robert Newcomb.

Please consider making a bequest in your will to the Community Foundation to benefit TGHS or make donations at any time.

Community Foundation of the Verdugos
330 Arden Avenue, Suite 130
Glendale, CA 91203
Phone: (818) 241-8040
Fax: (818) 241-8045

Email: info@communityfoundationoftheverdugos.org

The
Glendale Historical Society
PO Box 4173
Glendale CA 91202
www.glendalehistorical.org



CANDLELIGHT TOURS OF THE DOCTORS HOUSE MUSEUM



Bring the whole family to celebrate the holidays in true Victorian style! The historic Doctors House Museum will be completely illuminated by lamps and candlelight in the holiday tradition of the 1800's.

Self-guided tours and refreshments served by our costumed volunteers. Live music performed by The Pasadena Conservatory of Music.

In support of The Doctors House Museum a \$5 donation is greatly appreciated. Free admission to members of TGHS. No reservations required.

SATURDAY DECEMBER 10 AND SATURDAY DECEMBER 17, 2011
6:30PM – 8:30PM * 1601 W. MOUNTAIN STREET, GLENDALE, CA 91201

Victorian lamps courtesy of Mr. Craig Lightheizer. Rain may reduce some outdoor activities. The museum will be closed for regular Sunday tours through December and on January 1, 2012